

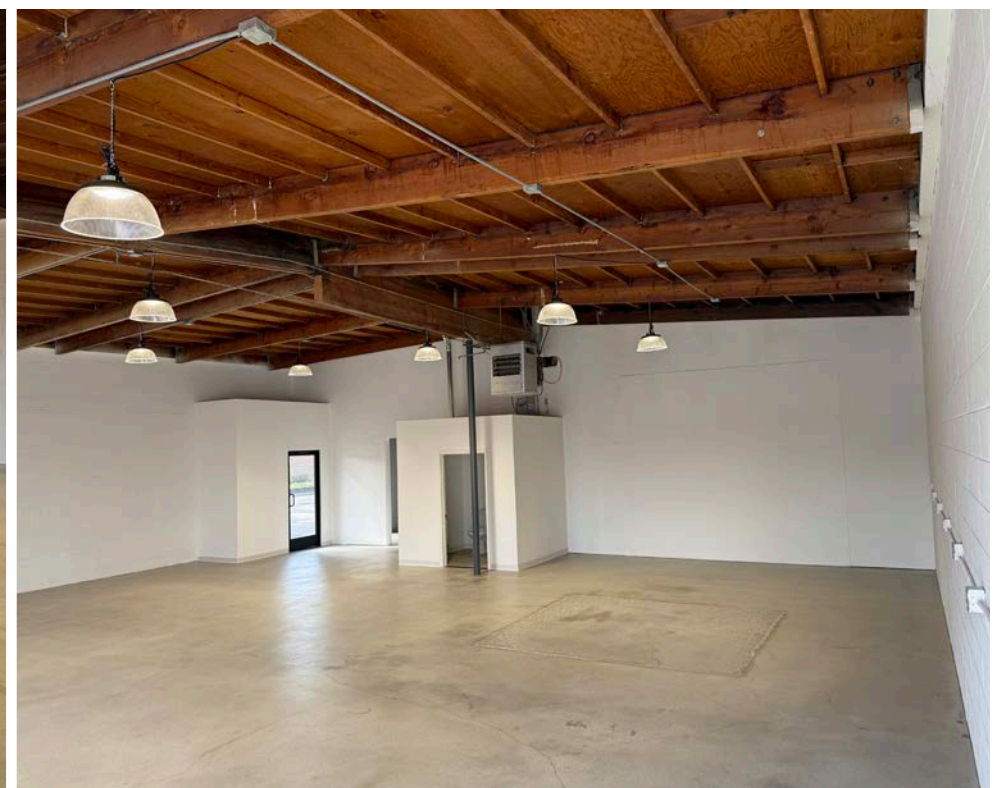
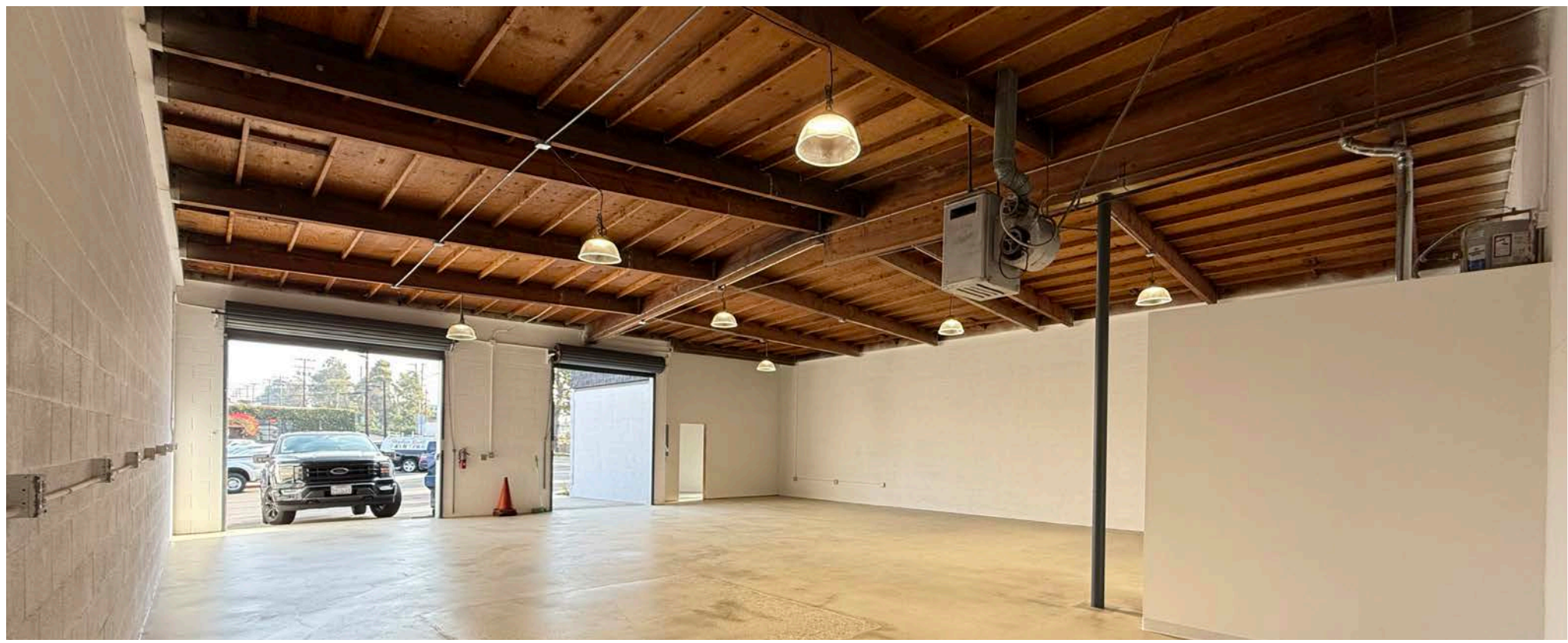
419-421 E El Segundo Blvd., El Segundo, CA 90245

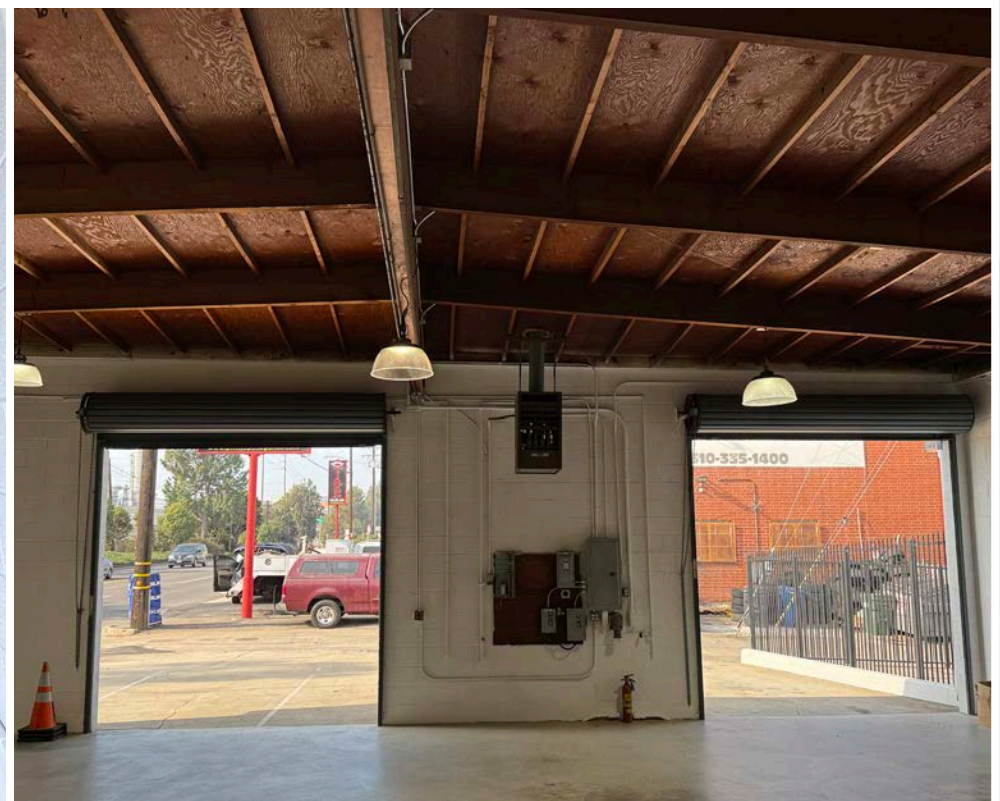
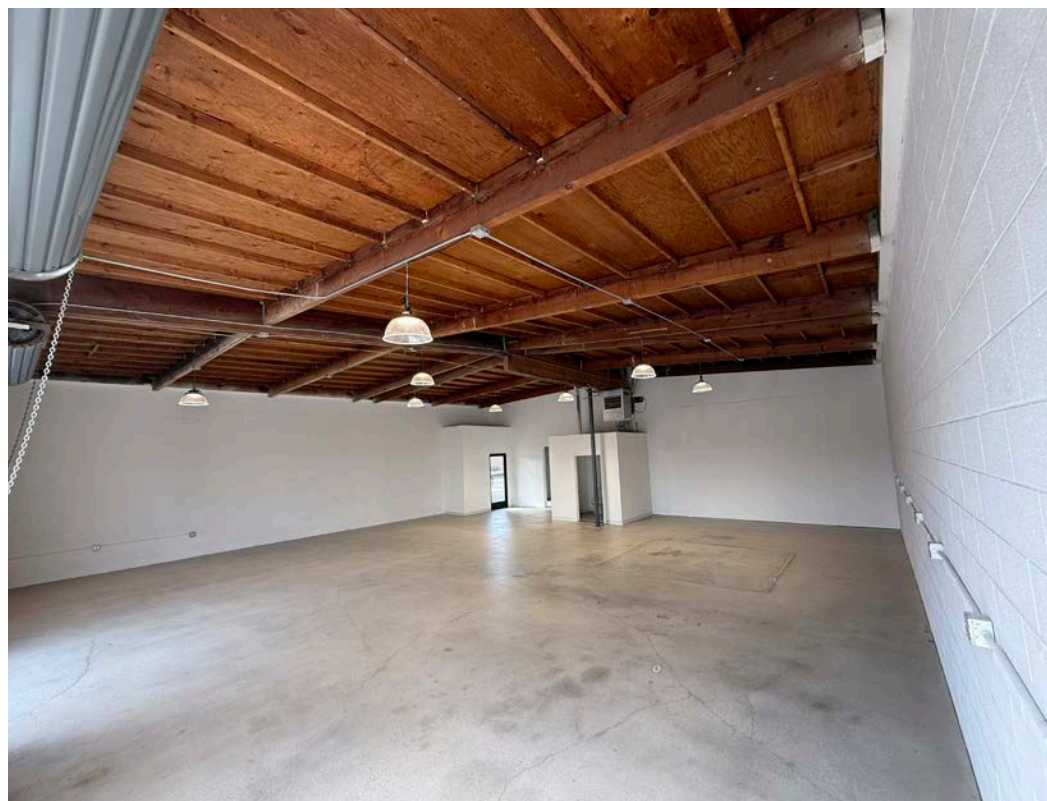


**FULLY RENOVATED SMOKY
HOLLOW FLEX SPACE FOR LEASE**

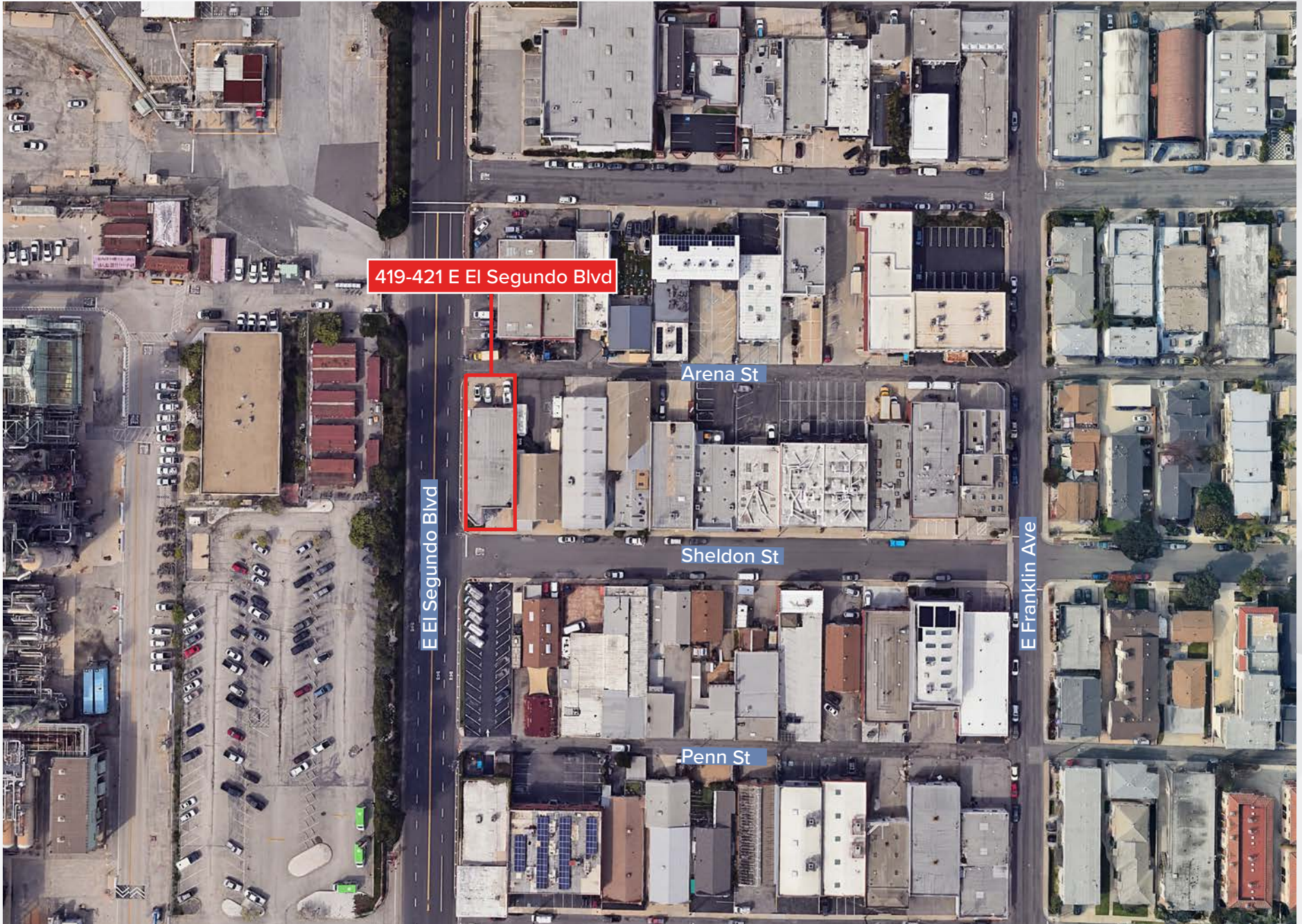


| | |
|------------------|--|
| PREMISES | ± 2,019 - 4,269 SF Four Ground Level Loading Doors |
| RENT | \$2.95/SF, MG |
| OCCUPANCY | Immediate |
| TERM | 3 - 5 Years |
| PARKING | 2/1000 SF |
| FEATURES | <ul style="list-style-type: none">- Brand New Refurbishments- Open Floor Plan- Polished Concrete Floors- Exposed Wood Ceilings- 14 Foot Clear Height- Power: 120/240 Volt 3 Phase- Flexible For Many Uses- Central Location |
| CONTACTS | <p>Gage Danley 310.899.2749 gdanley@leewestla.com DRE: 02075191</p> <p>Aleks Trifunovic, SIOR 310.899.2721 atrifunovic@leewestla.com DRE: 01363109</p> |





AERIAL MAP



419-421 E El Segundo Blvd

Arena St

Sheldon St

Penn St

E El Segundo Blvd

E Franklin Ave

NEARBY AMENITIES



CONTACTS



Gage Danley
310.899.2749
Gdanley@leewestla.com
DRE #: 02075191

Aleks Trifunovic, SIOR
310.899.2721
atrifunovic@leewestla.com
DRE #: 01363109