



For Lease

Lew Manglos, CCIM, SIOR
208 472 2841
lew.manglos@colliers.com

David Cadwell
208 850 3733
david.cadwell@colliers.com

755 West Front Street, Suite 300
Boise, Idaho 83702
208 345 9000
colliers.com/idaho

1450 S. Eagle Flight Way Boise, ID

Highlights:

- Beautiful office building located near Maple Grove & Overland Roads in West Boise
- Great location for office, service or medical users
- Surrounding retailers, restaurants and financial institutions
- Abundant parking

Space Available

Suite	Size	Rate
1458	13,308 SF	\$19.75/SF FSEJ (Available 12/31/2025)
1450	13,060 SF	\$19.75/SF FSEJ

*Contact agent for more information

For Lease

Property Information

Property Type	Office
Building Size	43,762
Parking	Abundant
Access	Contact Agent

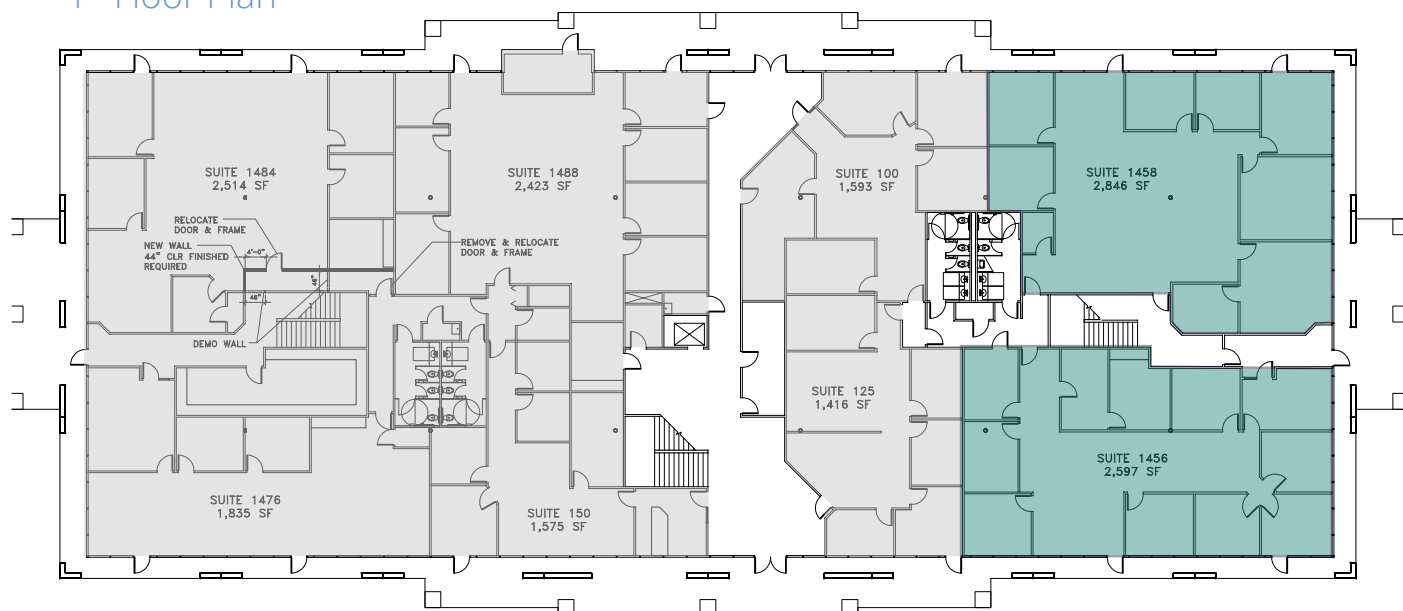


Available for
Occupancy

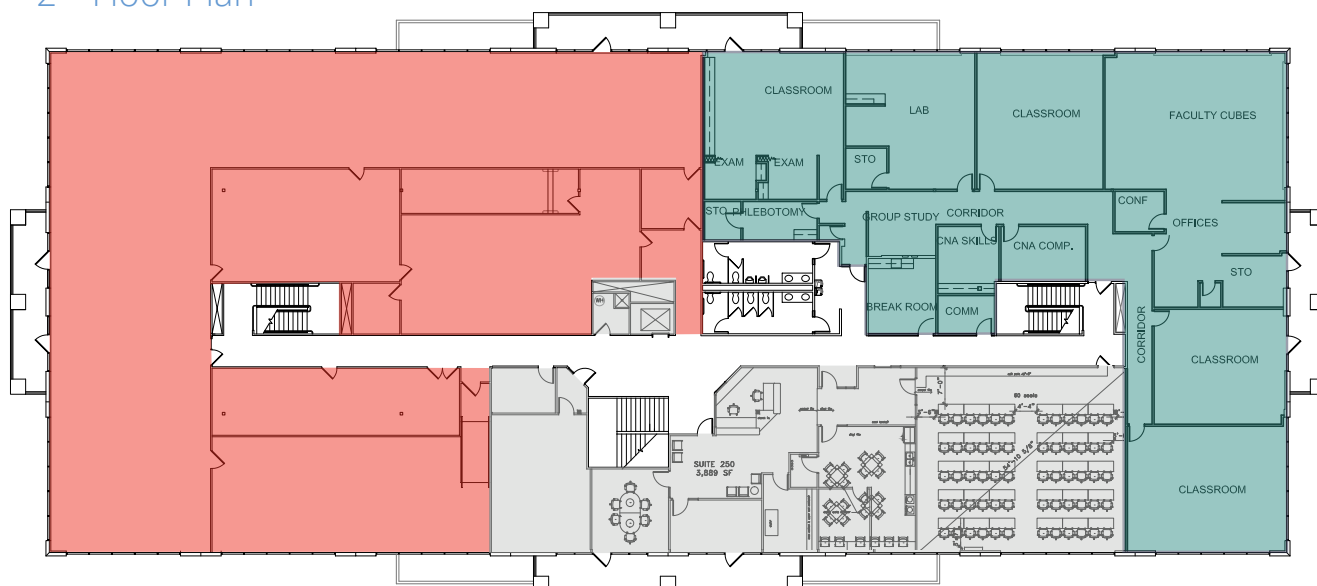


Available
12/31/2025

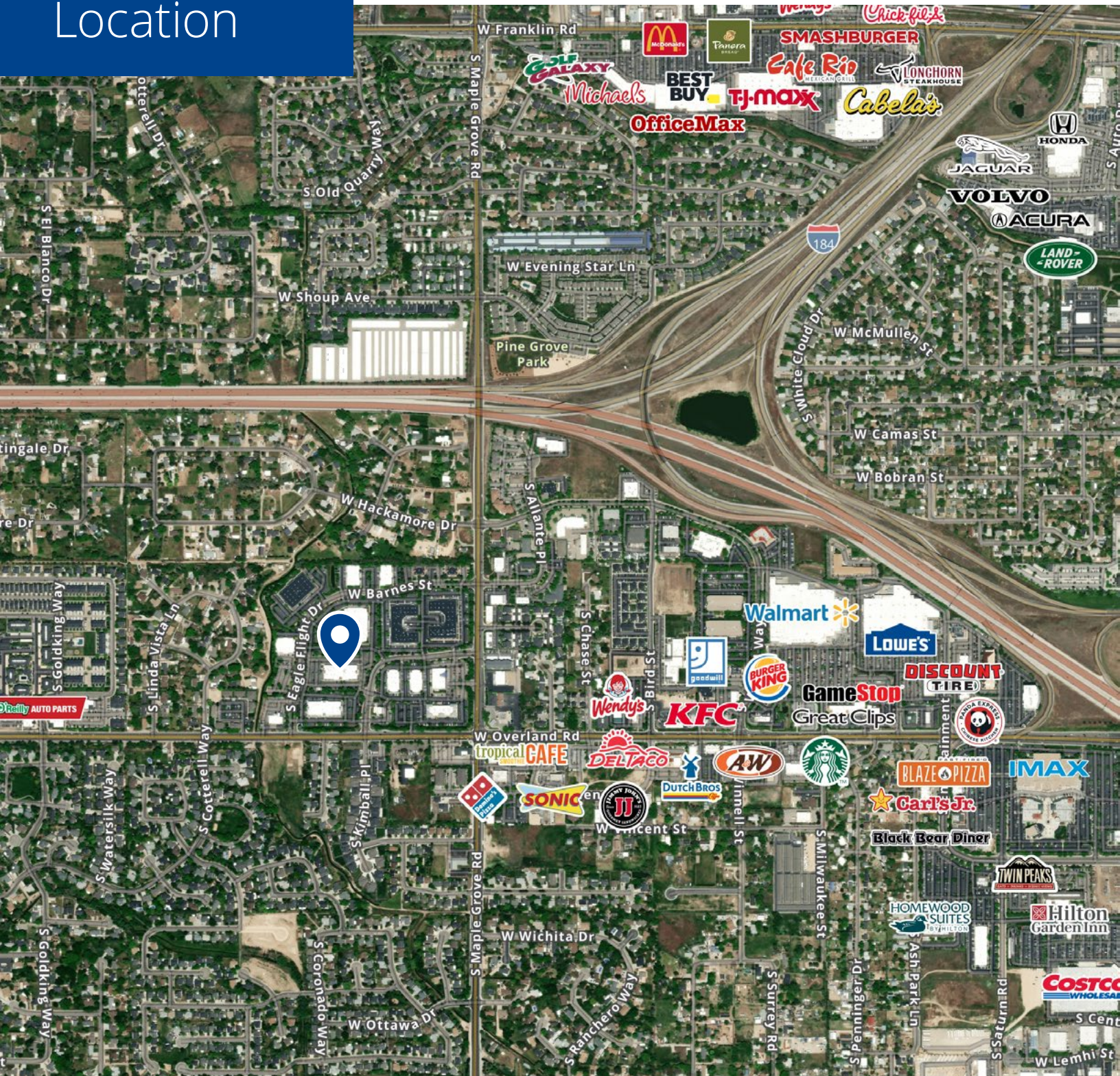
1st Floor Plan



2nd Floor Plan



Location



755 West Front Street, Suite 300
Boise, Idaho 83702
208 345 9000
colliers.com/idaho

This document has been prepared by Colliers for advertising and general information only. Colliers makes no guarantees, representations or warranties of any kind, expressed or implied, regarding the information including, but not limited to, warranties of content, accuracy and reliability. Any interested party should undertake their own inquiries as to the accuracy of the information. Colliers excludes unequivocally all inferred or implied terms, conditions and warranties arising out of this document and excludes all liability for loss and damages arising there from. This publication is the copyrighted property of Colliers and/or its licensor(s). © 2024. All rights reserved. This communication is not intended to cause or induce breach of an existing listing agreement. Colliers Treasure Valley, LLC.