

# GID

## INDUSTRIAL

211 Perimeter Center Pkwy NE, Suite 900,  
Atlanta, GA 30346





### BUILDING INFORMATION:

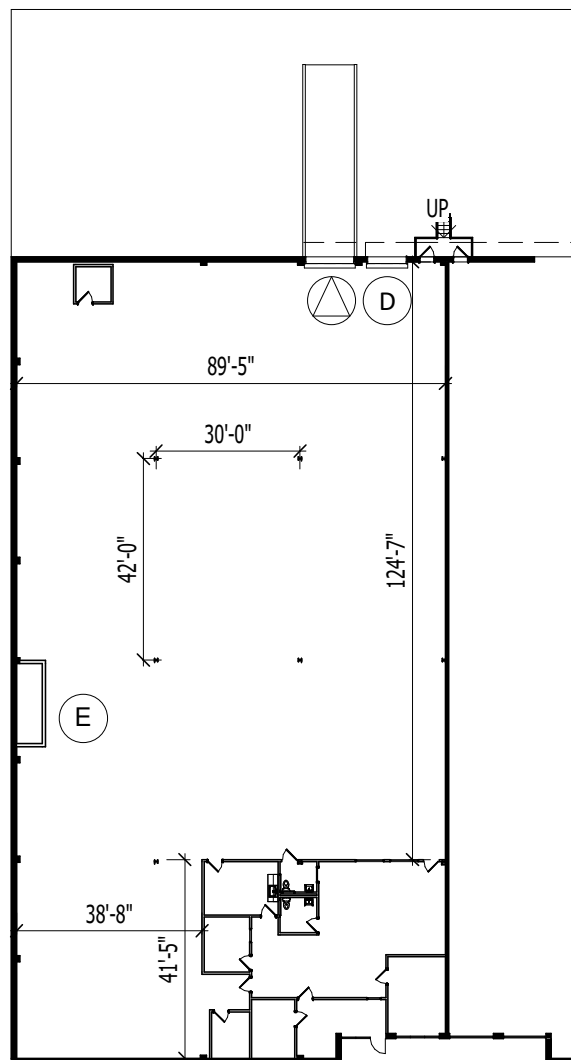
TOTAL BUILDING: 70,125 SF  
SUITE AREA: 15,161 SF  
WAREHOUSE AREA: 13,196 SF  
OFFICE AREA: 1,965 SF

MIN. CLEAR HEIGHT: 21'-9"  
MAX. CLEAR HEIGHT: 23'-3"  
TYP. COLUMN SPACNG: 30'0 x 42'0

SPRINKLERED: YES

### SYMBOL LEGEND:

-  DOCK DOORS
-  DOCK DOORS W/ LEVELERS
-  DRIVE IN DOORS
-  ELECTRICAL PANELS



Suite Plan  
SCALE: 1" = 40'-0"



NOTE: THIS CONCEPTUAL PLAN IS FOR MARKETING PURPOSES ONLY AND HAS BEEN PREPARED BASED ON PRELIMINARY AVAILABLE SITE INFORMATION DEEMED RELIABLE. ALL DIMENSION AREA CALCULATIONS ARE SUBJECT TO VERIFICATION BY A PROFESSIONAL ENGINEER FOR COMPLIANCE WITH ALL FEDERAL, STATE, AND LOCAL REGULATIONS.

## 7025 Amwiler

Suite A  
7025 Amwiler Industrial Dr NW Atlanta, GA 30360

## NELSON

23.0001021.000  
3/3/2023

# GID

## INDUSTRIAL

211 Perimeter Center Pkwy NE, Suite 900,  
Atlanta, GA 30346

### BUILDING INFORMATION:

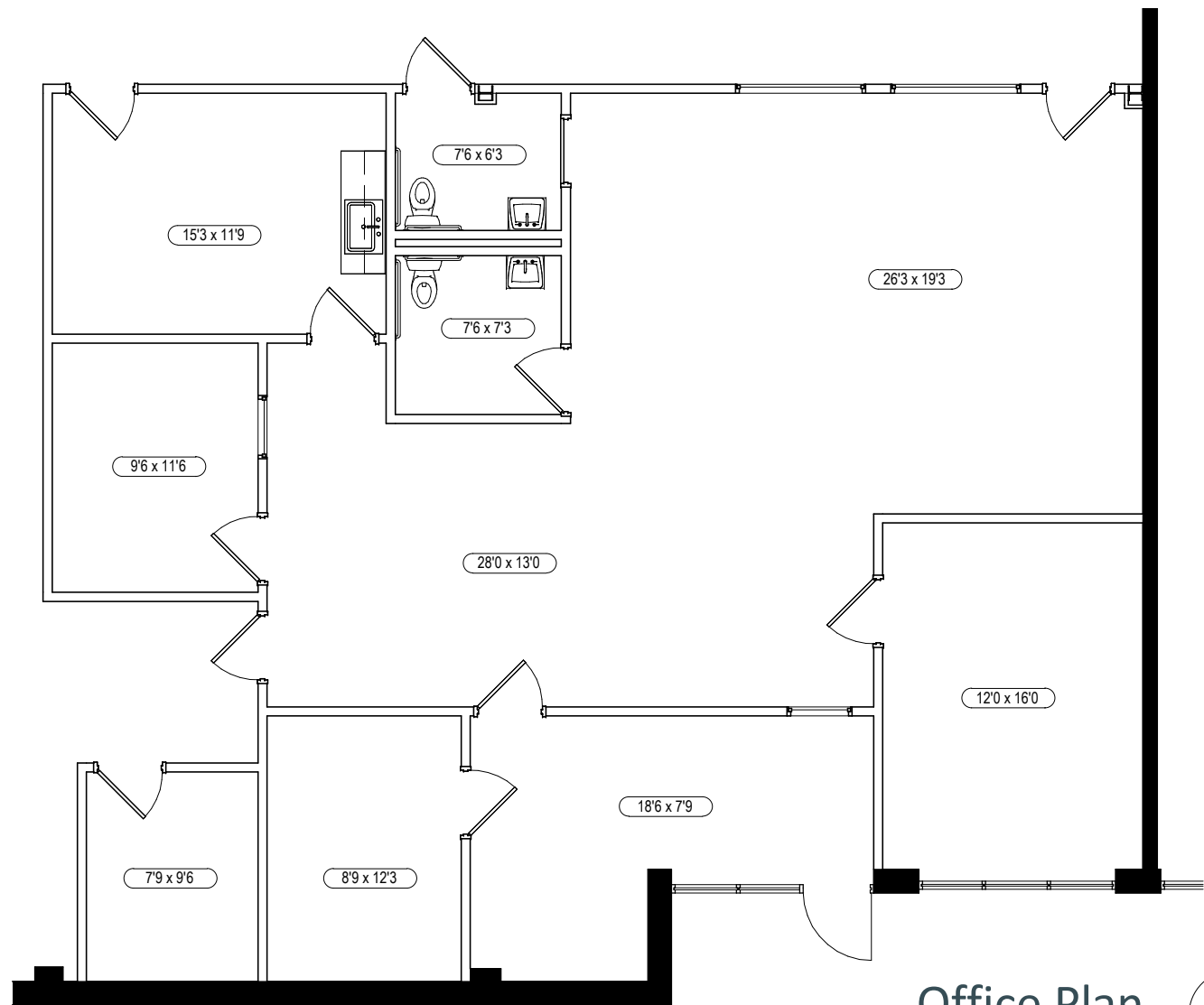
TOTAL BUILDING: 70,125 SF  
SUITE AREA: 15,161 SF  
WAREHOUSE AREA: 13,196 SF  
OFFICE AREA: 1,965 SF

MIN. CLEAR HEIGHT: 21'-9"  
MAX. CLEAR HEIGHT: 23'-3"  
TYP. COLUMN SPACNG: 30'0" x 42'0"

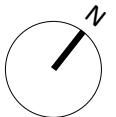
SPRINKLERED: YES

### SYMBOL LEGEND:

- D DOCK DOORS
- L DOCK DOORS W/ LEVELERS
- △ DRIVE IN DOORS
- E ELECTRICAL PANELS



Office Plan  
SCALE: 1/8" = 1'-0"



NOTE: THIS CONCEPTUAL PLAN IS FOR MARKETING PURPOSES ONLY AND HAS BEEN PREPARED BASED ON PRELIMINARY AVAILABLE SITE INFORMATION DEEMED RELIABLE. ALL DIMENSION AREA CALCULATIONS ARE SUBJECT TO VERIFICATION BY A PROFESSIONAL ENGINEER FOR COMPLIANCE WITH ALL FEDERAL, STATE, AND LOCAL REGULATIONS.

## 7025 Amwiler

Suite A Office  
7025 Amwiler Industrial Dr NW Atlanta, GA 30360

## NELSON

23.0001021.000  
03/03/23