

FOR SALE | SEGUIN INDUSTRIAL RAIL DEVELOPMENT

±187.57 Acres of Land for Industrial Development

Krueger Rd on IH-10 & Ilka Switch on Hwy 90, Seguin, TX 78155

Property Highlights

- ±187.57 Acres of Land
- Ideal for Industrial Development
- Union Pacific Rail Service Possible
- Zoned light industrial (See [Seguin Zoning Map](#))
- East side of Seguin @ IH-10 & Highway 90
- Near SH 130 Providing Easy Access to Austin
- Future Intersection Improvements will Improve Access

Phil Crane, CCIM

Partner
210.876.2242
phil.crane@partnersrealestate.com



John Colglazier, Jr. - SIOR

Partner
210.996.2934
john.colglazier@partnersrealestate.com



Kyle Kennan

Vice President
210.714.2196
kyle.kennan@partnersrealestate.com



Pricing

Contact Broker

112 E Pecan St, Suite 1515 / San Antonio, TX 78205
713.629.0500 / partnersrealestate.com

BROKERAGE SERVICES

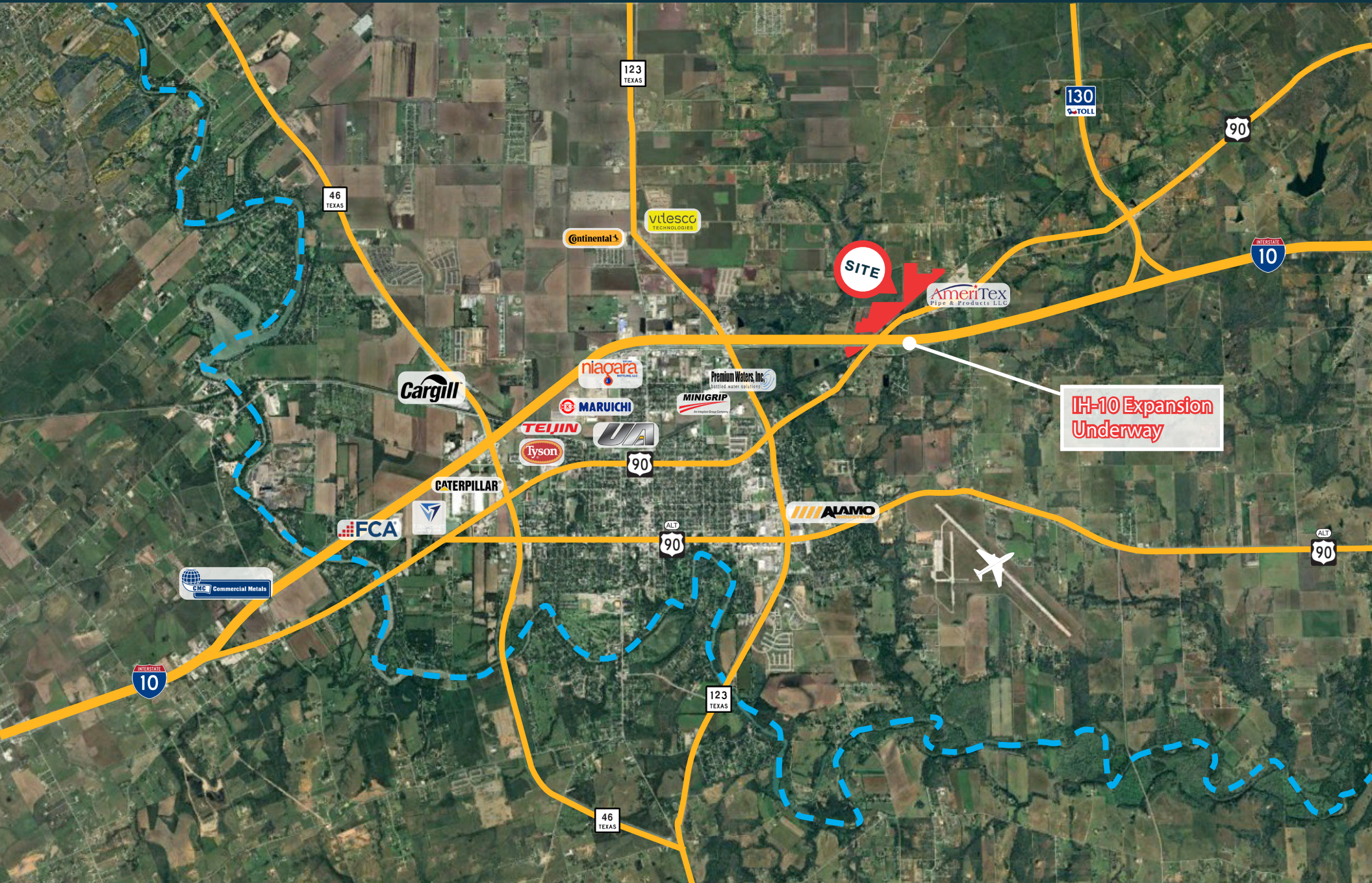
The information contained herein has been given to us by the owner of the property or other sources we deem reliable, we have no reason to doubt its accuracy, but we do not guarantee it. All information should be verified prior to purchase or lease. © 2024 Partners. All rights reserved.

partners

FOR SALE | SEGUIN INDUSTRIAL RAIL DEVELOPMENT

±187.57 Acres of Land for Industrial Development

Krueger Rd on IH-10 & Ilka Switch on Hwy 90, Seguin, TX 78155

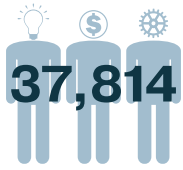


FOR SALE | SEGUIN INDUSTRIAL RAIL DEVELOPMENT

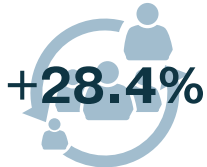
±187.57 Acres of Land for Industrial Development

Krueger Rd on IH-10 & Ilka Switch on Hwy 90, Seguin, TX 78155

SEGUIN'S KEY INDICATORS



2024 POPULATION



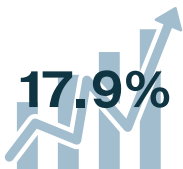
POPULATION INCREASE



MEDIAN AGE



MEDIAN HH INCOME



POVERTY RATE

SEGUIN'S LARGEST EMPLOYERS



INDUSTRY	Manufacturing
EST. EMPLOYMENT	1,600



INDUSTRY	Manufacturing
EST. EMPLOYMENT	830



INDUSTRY	Manufacturing
EST. EMPLOYMENT	900



INDUSTRY	Manufacturing
EST. EMPLOYMENT	1,500



INDUSTRY	Government
EST. EMPLOYMENT	650



INDUSTRY	Education
EST. EMPLOYMENT	440



INDUSTRY	Education
EST. EMPLOYMENT	1,100



INDUSTRY	Government
EST. EMPLOYMENT	490



INDUSTRY	Retail
EST. EMPLOYMENT	400

DRIVE TIMES FROM SEGUIN

NEW BRAUNFELS

13.5 Miles

SAN ANTONIO

33.8 Miles

HOUSTON

163 Miles

LAREDO

190 Miles

SAN MARCOS

24.4 Miles

AUSTIN

67 Miles

CORPUS CHRISTI

169 Miles

DFW AREA

256 Miles

SEGUIN'S GROWTH HIGHLIGHTS

16,733 Housing Units in Development Pipeline

56 Subdivisions in Development Pipeline

- 25 Subdivisions Currently Under Construction
- 25 Subdivisions in Entitlement/Pre-Development Phase
- 6 Subdivision "Complete/Built Out"
- 4,000+ New Residential Building Permits issued since 2020

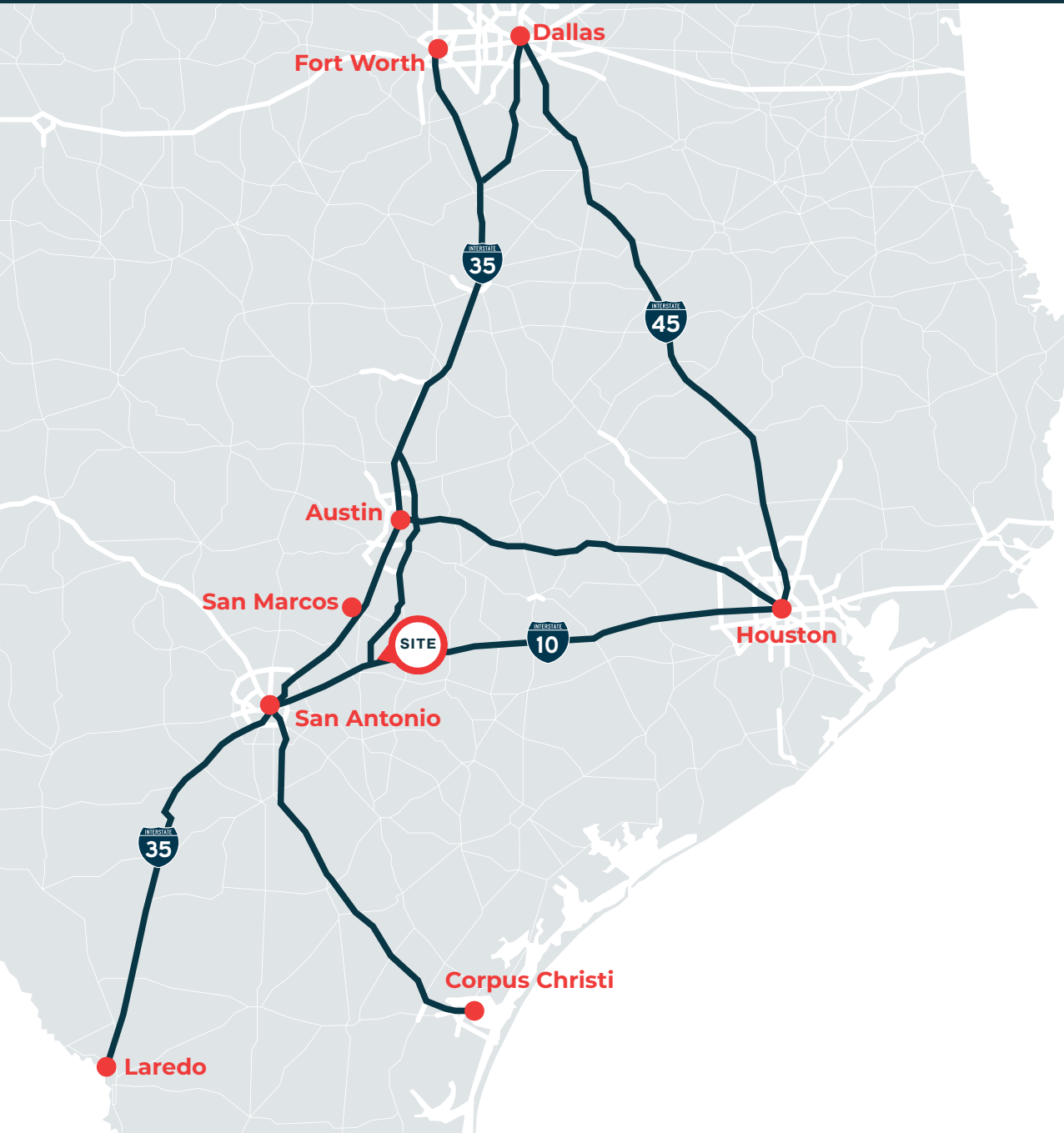
Multifamily

- 456 Units Currently Under Construction
- 425+ Units Expected to Break Ground before end of 2024

FOR SALE | SEGUIN INDUSTRIAL RAIL DEVELOPMENT

±187.57 Acres of Land for Industrial Development

Krueger Rd on IH-10 & Ilka Switch on Hwy 90, Seguin, TX 78155



TEXAS TRIANGLE

IS PROJECTED TO GROW BY **3.5 MILLION** BETWEEN **NOW AND 2030**. THE ENTIRE AREA WILL BECOME ONE GIANT METROPOLIS WITH A **19 PERCENT GROWTH IN RESIDENTS**—FROM **18.14 MILLION IN 2015 TO 21.65 MILLION IN 2030**—BRINGING IT CLOSE TO THE CURRENT POPULATION OF THE NEW YORK CITY METRO AREA (20.18 MILLION PEOPLE).

(U.S. Census Bureau and forecasts from the Texas Office of the State Demographer)

NO. 1

JOB CREATOR IN THE NATION
TEXAS IS PROJECTED TO ADD ONE MILLION JOBS BY 2023
(FORBES)

NO. 2

LARGEST WORKFORCE IN THE US
(U.S. CENSUS BUREAU)

50+

FORTUNE 500 COMPANY HQ
IN THE TRIANGLE METROS

PORT OF LAREDO

NO. 1 INLAND PORT
IN THE U.S.

PORT OF HOUSTON

2ND LARGEST PORT
BY VOLUME OF TONNAGE IN THE U.S.



Information About Brokerage Services

Texas law requires all real estate license holders to give the following information about brokerage services to prospective buyers, tenants, sellers and landlords.

TYPES OF REAL ESTATE LICENSE HOLDERS:

- **A BROKER** is responsible for all brokerage activities, including acts performed by sales agents sponsored by the broker.
- **A SALES AGENT** must be sponsored by a broker and works with clients on behalf of the broker.

A BROKER'S MINIMUM DUTIES REQUIRED BY LAW (A client is the person or party that the broker represents):

- Put the interests of the client above all others, including the broker's own interests;
- Inform the client of any material information about the property or transaction received by the broker;
- Answer the client's questions and present any offer to or counter-offer from the client; and
- Treat all parties to a real estate transaction honestly and fairly.

A LICENSE HOLDER CAN REPRESENT A PARTY IN A REAL ESTATE TRANSACTION:

AS AGENT FOR OWNER (SELLER/LANDLORD): The broker becomes the property owner's agent through an agreement with the owner, usually in a written listing to sell or property management agreement. An owner's agent must perform the broker's minimum duties above and must inform the owner of any material information about the property or transaction known by the agent, including information disclosed to the agent or subagent by the buyer or buyer's agent.

AS AGENT FOR BUYER/TENANT: The broker becomes the buyer/tenant's agent by agreeing to represent the buyer, usually through a written representation agreement. A buyer's agent must perform the broker's minimum duties above and must inform the buyer of any material information about the property or transaction known by the agent, including information disclosed to the agent by the seller or seller's agent.

AS AGENT FOR BOTH - INTERMEDIARY: To act as an intermediary between the parties the broker must first obtain the written agreement of *each party* to the transaction. The written agreement must state who will pay the broker and, in conspicuous bold or underlined print, set forth the broker's obligations as an intermediary. A broker who acts as an intermediary:

- Must treat all parties to the transaction impartially and fairly;
- May, with the parties' written consent, appoint a different license holder associated with the broker to each party (owner and buyer) to communicate with, provide opinions and advice to, and carry out the instructions of each party to the transaction.
- Must not, unless specifically authorized in writing to do so by the party, disclose:
 - that the owner will accept a price less than the written asking price;
 - that the buyer/tenant will pay a price greater than the price submitted in a written offer; and
 - any confidential information or any other information that a party specifically instructs the broker in writing not to disclose, unless required to do so by law.

AS SUBAGENT: A license holder acts as a subagent when aiding a buyer in a transaction without an agreement to represent the buyer. A subagent can assist the buyer but does not represent the buyer and must place the interests of the owner first.

TO AVOID DISPUTES, ALL AGREEMENTS BETWEEN YOU AND A BROKER SHOULD BE IN WRITING AND CLEARLY ESTABLISH:

- The broker's duties and responsibilities to you, and your obligations under the representation agreement.
- Who will pay the broker for services provided to you, when payment will be made and how the payment will be calculated.

LICENSE HOLDER CONTACT INFORMATION: This notice is being provided for information purposes. It does not create an obligation for you to use the broker's services. Please acknowledge receipt of this notice below and retain a copy for your records.

PCR Brokerage Austin, LLC dba Partners	9003950	licensing@partnersrealestate.com	713-629-0500
Licensed Broker /Broker Firm Name or Primary Assumed Business Name	License No.	Email	Phone
Jon Silberman	389162	jon.silberman@partnersrealestate.com	713-985-4626
Designated Broker of Firm	License No.	Email	Phone
Scott Lunine	787298	scott.lunine@partnersrealestate.com	713 629 0500
Licensed Supervisor of Sales Agent/ Associate	License No.	Email	Phone
Kyle Kennan	725120	kyle.kennan@partnersrealestate.com	210-714-2196
Sales Agent/Associate's Name	License No.	Email	Phone

Buyer/Tenant/Seller/Landlord Initials

Date