



THE CENTER

at Washington Park

1308 Race Street • Cincinnati, OH 45202

PROPERTY HIGHLIGHTS

The eCenter is a 34,528 SF Class A historic building with an unmatched location and access to top-tier amenities in Over-the-Rhine. Featuring flexible floorplates, ample on-site amenities and a dedicated ownership team – this innovative space is Cincinnati’s premier creative office building.

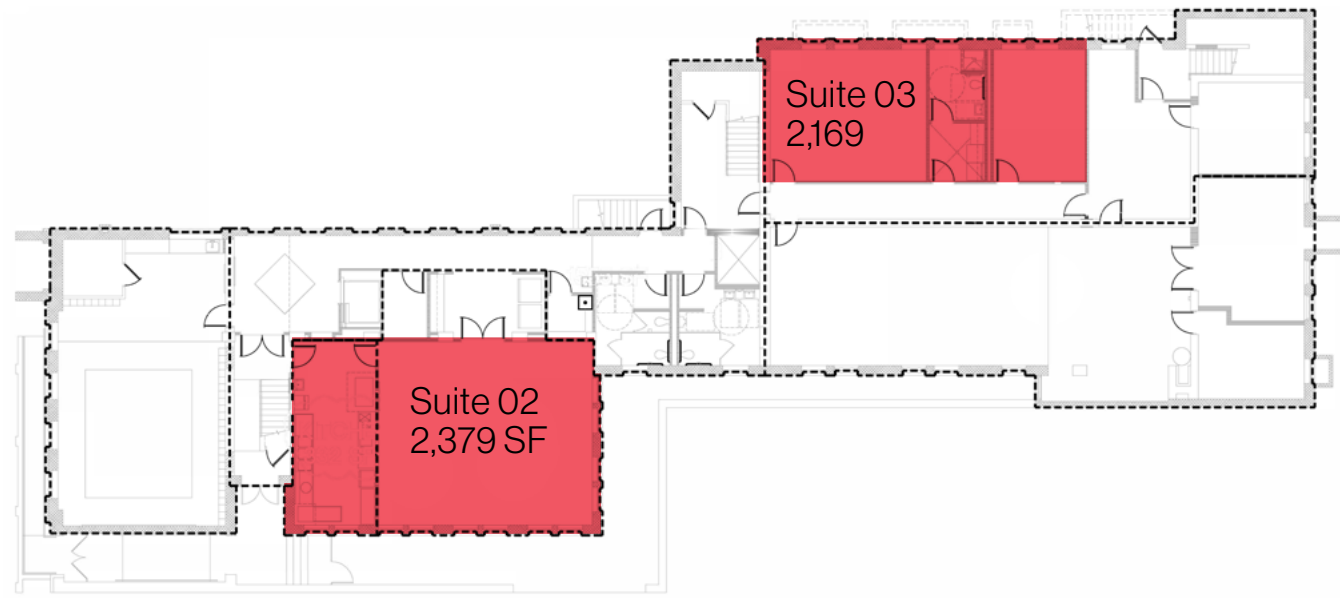
BUILDING AMENITIES

- 1st floor views of Cincinnati Music Hall
- Large conference room (accommodates up to 24 people)
- 6-person conference room and a huddle room
- Ample on-site parking
- Operable windows for fresh air throughout the building
- Outdoor courtyard with heaters and bike rack
- Basketball hoop
- Hopscotch
- Controlled access
- Professional managed by Uptown Rental Properties
- Security system
- Kitchen
- Natural light

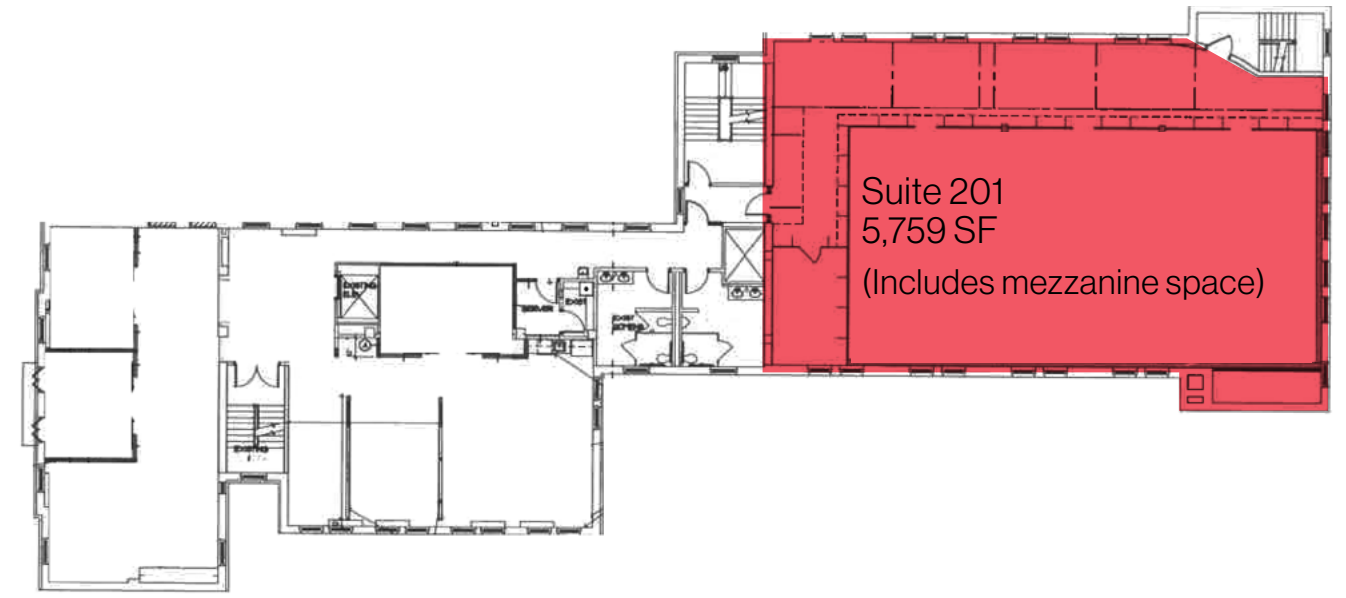


FLOOR PLANS

Garden Level

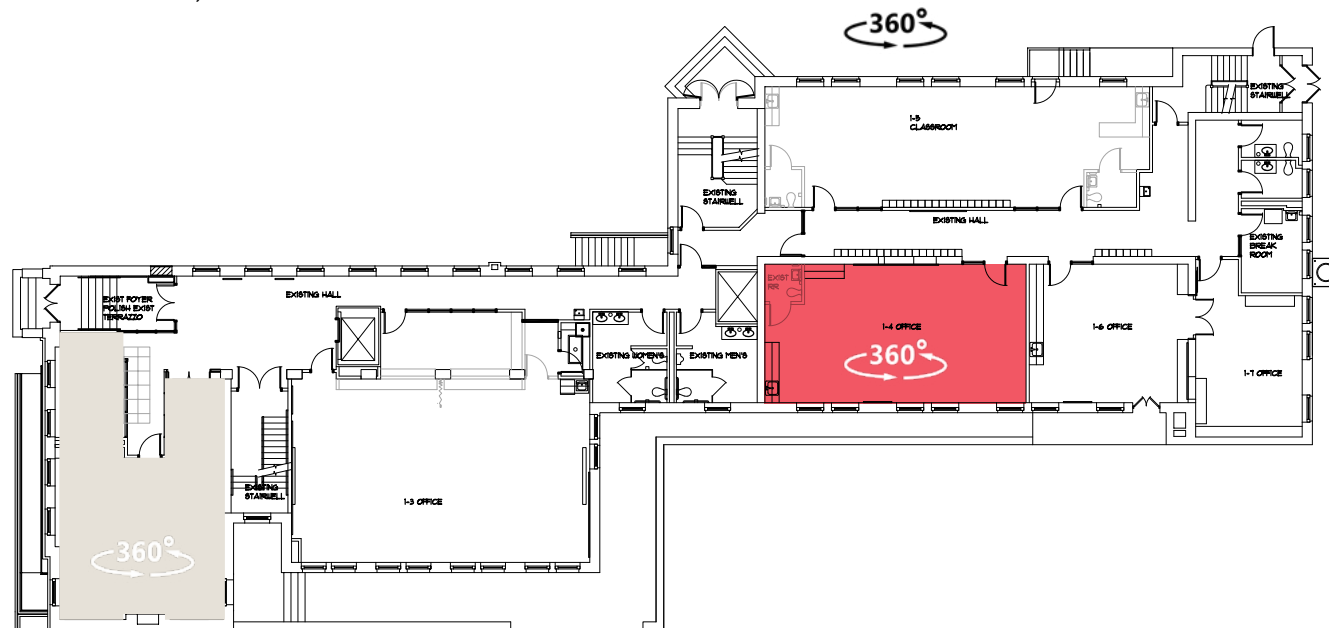


2nd Floor








1st Floor

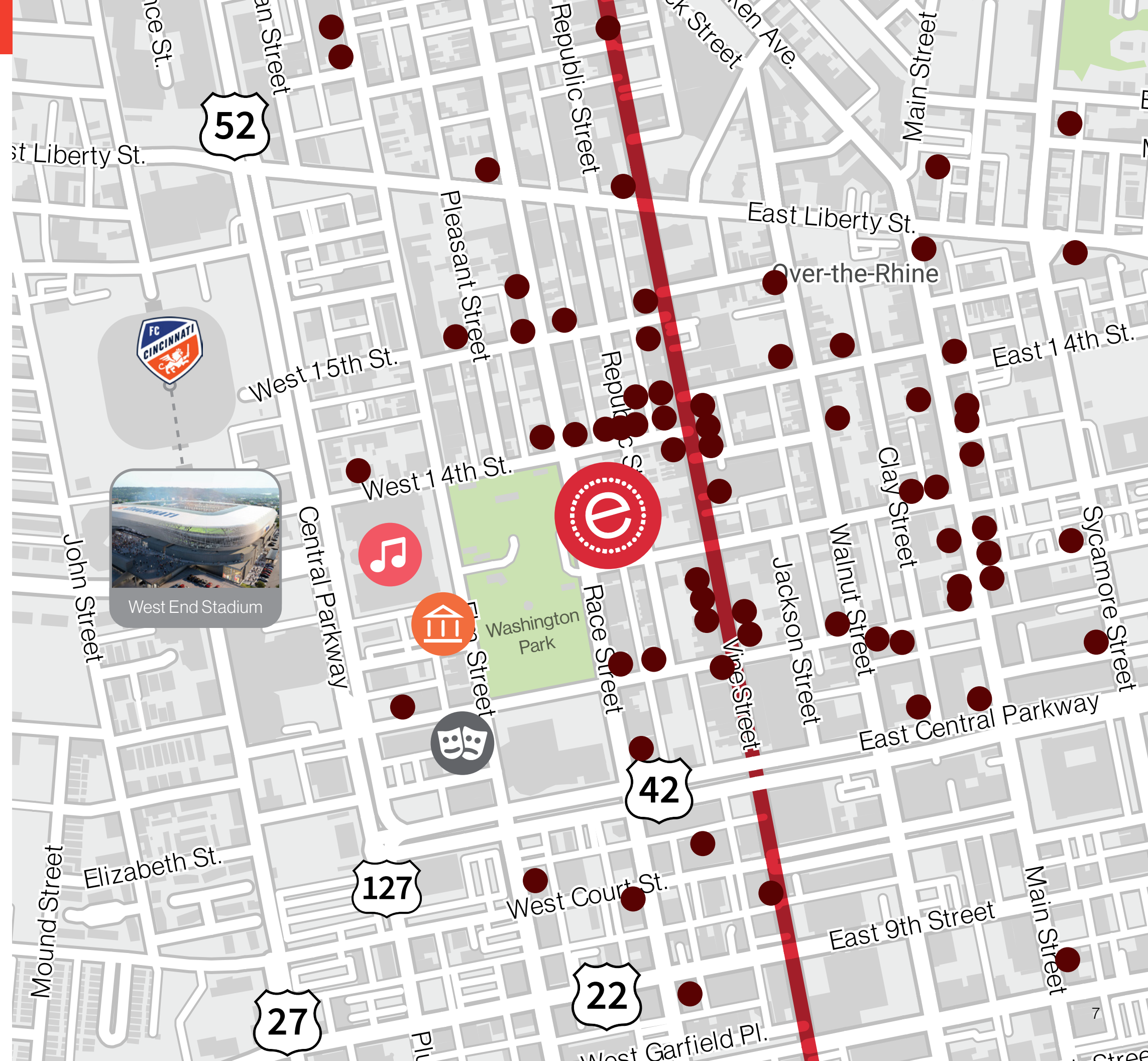
Suite 102 - 1,638 SF



UNBEATABLE LOCATION

The eCenter is ideally located in the heart of Cincinnati's popular Over-the-Rhine neighborhood. With the best view of Washington Park, close proximity to Cincinnati Music Hall, neighboring YMCA and steps from Vine Street restaurants, bars and coffee shops – this is the ultimate live, work, play destination for businesses to grow and thrive.

-  The eCenter
-  Cincinnati Music Hall
-  Memorial Hall OTR
-  Cincinnati Shakespeare Company
-  Restaurants/Bars





ABOUT GRANDIN PROPERTIES

Founded in 1988 by Peg Wyant, Grandin Properties offers residential, office, and retail space in distinctive urban neighborhoods, like Hyde Park, Eden Park, Mt. Adams, East Walnut Hills, Over-the-Rhine, and Covington.

Grandin invests in inspiring locations where the sweeping grandeur of historic architecture meets modern interior renovations. They are committed to safe, sustainable and environmentally friendly spaces, supporting tenants to the highest levels of satisfaction.

A number of companies have started small and blossomed in the unique atmosphere of the eCenter, including goDutch, NaviStone, Harvest Group, and Grandin Properties. In addition, we are very proud to name Saatchi, Epsilon, Digital Partners A Munich Re company, Design Lab, and The BonBonerie among our tenants by creating elegant and sophisticated spaces in buildings like The eCenter, The Strietmann Center and Warner Brothers Building.

ecenterotr.com

Leasing Contact

Michelle Klingenberg

+1 513 719 3703

michelle.klingenberg@jll.com

