

STRAUSS

REALTY, LTD.

378 PARK AVE.
GLENCOE, IL 60022

CREATIVE OFFICE FOR LEASE IN THE HEART OF DOWNTOWN GLENCOE



Great third floor creative office space for lease in an updated historic building in downtown Glencoe. Bright space with 3 rooms plus bathroom and closet. Located across from Hometown Coffee & Juice. Walk to banks, post office, lunch spots and shops. Glencoe Metra Station is only two blocks away.

Suite #3A:	841 SF
Lease Rate:	\$2,500/Mo. Plus Utilities
Lease Type:	Gross

CRAIG WOLF

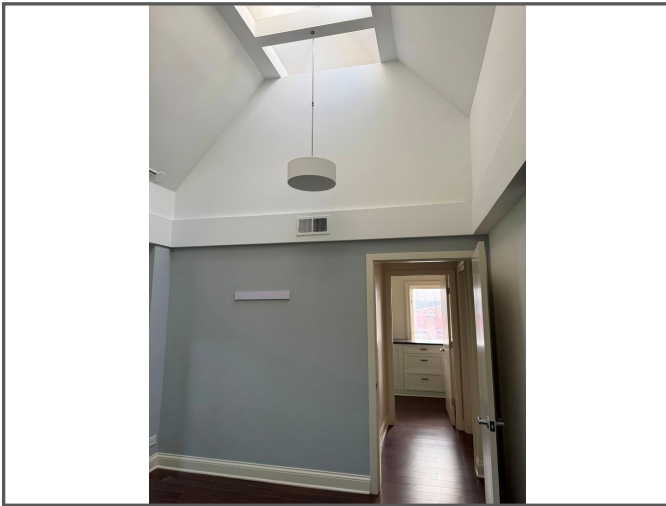
847-989-9653

CRAIG@STRAUSSREALTY.COM

STRAUSS REALTY, LTD.
4220 W. MONTROSE AVENUE
CHICAGO, ILLINOIS 60641
PHONE: 773-736-3600

This flyer was produced using data from private and government sources deemed reliable. The information herein is provided without representation.

**CREATIVE OFFICE FOR LEASE
IN THE HEART OF DOWNTOWN GLENCOE**



CRAIG WOLF
847-989-9653
CRAIG@STRAUSSREALTY.COM

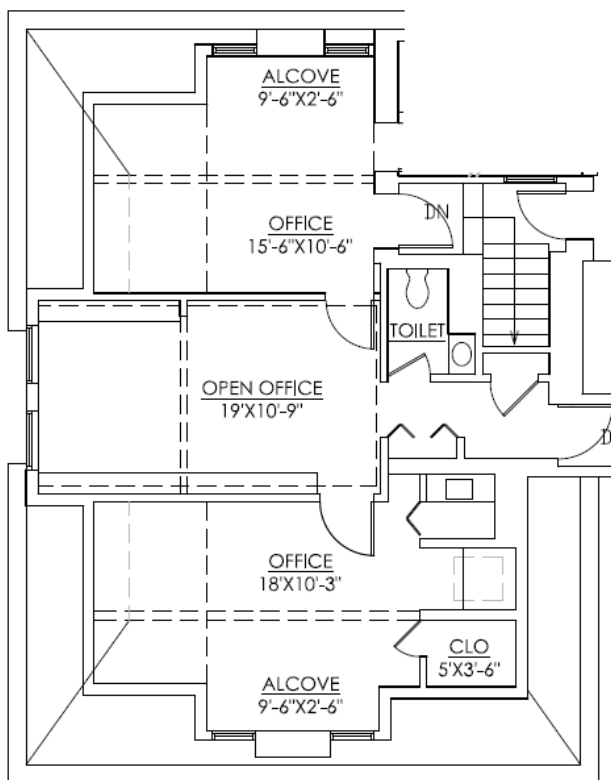
STRAUSS REALTY, LTD.
4220 W. MONTROSE AVENUE
CHICAGO, ILLINOIS 60641
PHONE: 773-736-3600

STRAUSS

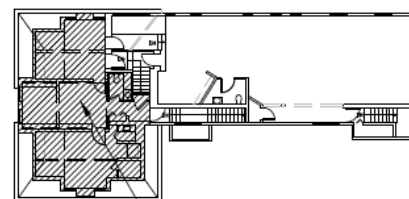
REALTY, LTD.

378 PARK AVE.
GLENCOE, IL 60022

FLOOR PLAN



SUITE 3A
841 RSF



SUITE LOCATION

KEY PLAN



378 PARK STREET GLENCOE, ILLINOIS

CRAIG WOLF

847-989-9653

CRAIG@STRAUSSREALTY.COM

STRAUSS REALTY, LTD.

4220 W. MONTROSE AVENUE

CHICAGO, ILLINOIS 60641

PHONE: 773-736-3600