



FOR LEASE

±16,000 sqft Retail Space in Lyman, SC



200 Spartanburg Highway

Lyman, SC

Property Highlights

- ±12 ft ceilings
- Fire alarm system
- Two (2) Restrooms
- Ample parking with 210 available spaces
- New roof (2023)
- Open floor plan
- Available February 1st, 2025

Location Highlights

- High visibility on Hwy 29
- Less than three (3) miles to I-85
- Traffic Count: ±26,300 VPD (2023)

Offering Summary

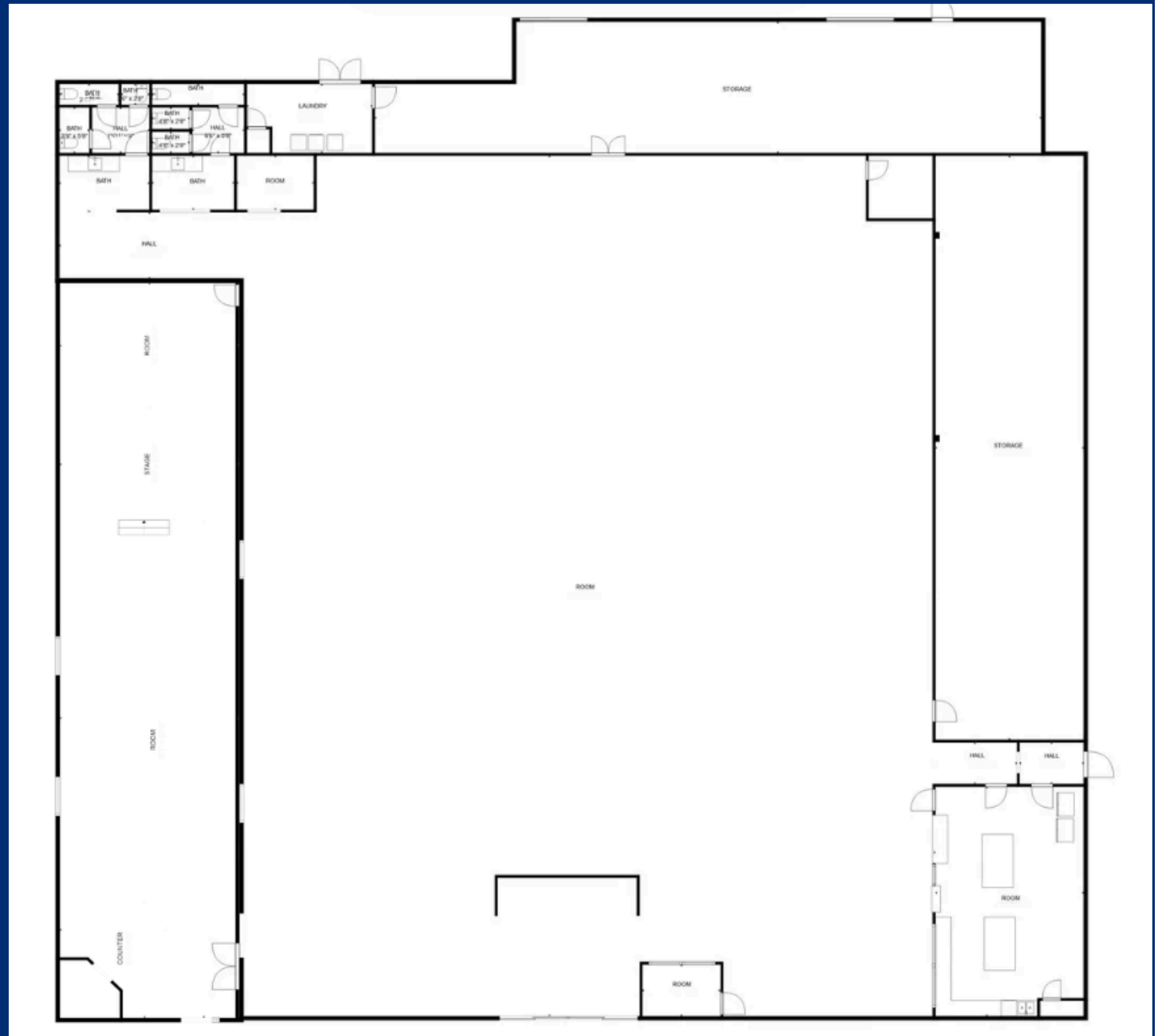
Lot Size:	±5 Acres
Available Space:	±16,000 sqft
Lease Rate:	\$8.00/sqft
Lease Term:	Negotiable
Lease Type:	NNN
Total Building Size:	±27,360 sqft

Acreeage, taxes, utilities and lot dimensions to be verified by Buyer and/or Buyers agent



Floor Plan

200 Spartanburg Highway
Lyman, SC



Parcel Overview

200 Spartanburg Highway
Lyman, SC



Local Amenities and Retailers

Lyman, SC



Contact Information

Reedy Property Group



Ellice Niedrach

P: 864-680-7916

E: eniedrach@reedypg.com



Josie Hollingsworth

P: 864-901-5007

E: jhollingsworth@reedypg.com