

**FOR  
LEASE**

**2368** MARITIME DR,  
ELK GROVE, CA

**+/- 916 - 10,181 SF OF PRIME OFFICE SPACE AVAILABLE!**



**3-D Tour  
Click Here**



**CHASE BURKE**  
916.705.8132  
CHASE@ROMECPRE.COM  
DRE: 01879336

**ANDY JONSSON**  
916.813.8409  
ANDY@ROMECPRE.COM  
DRE: 02076108

**ROME**  
REAL ESTATE GROUP

# MARITIME PLAZA

AVAILABLE SUITES

*+/- 916 - 10,181 SF*

ASKING RENTS

*\$2.50 - \$2.75 PSF, FSG*



- **Ideal Location:** offering prime access right off the I-5 freeway for easy commuting.
- **Class A Amenities:** elevator access, ample parking with 40 surface parking spaces, common area bathrooms on both floors, stunning views of the Green Belt, and protected land west of I-5.
- **Move-in Ready:** multiple spaces are ready, ensuring a smooth transition for tenants. Plus, tenants can access a large conference/training Room for monthly use at no additional fee.
- **Convenient Parking:** 40 surface parking spaces available.

# FLOOR PLAN - 1ST FLOOR

**SUITE 100:**  
**+/- 3,050 SQ.FT**  
**\$2.50 PSF, FSG**

**SUITE 110:**  
**+/- 5,025 SQ.FT**  
**\$2.50 PSF, FSG**

**ENTIRE 1st FLOOR:**  
**+/- 8,075 SQ.FT**  
**\$2.50 PSF, FSG**

**3D TOUR**  
**CLICK HERE**

**3D TOUR**  
**CLICK HERE**

**3D TOUR**  
**CLICK HERE**

**3-D Tour**  
**Click Here**



# FLOOR PLAN - 2ND FLOOR

[3-D Tour  
Click Here](#)

## **SUITE 200:**

**+/- 1,190 SQ.FT**

**\$2.75 PSF, FSG**

## **SUITE 210:**

**+/- 916 SQ.FT**

**\$2.75 PSF, FSG**

## **SUITES 200 & 210:**

**+/- 2,106 SQ.FT**

**\$2.65 PSF, FSG**

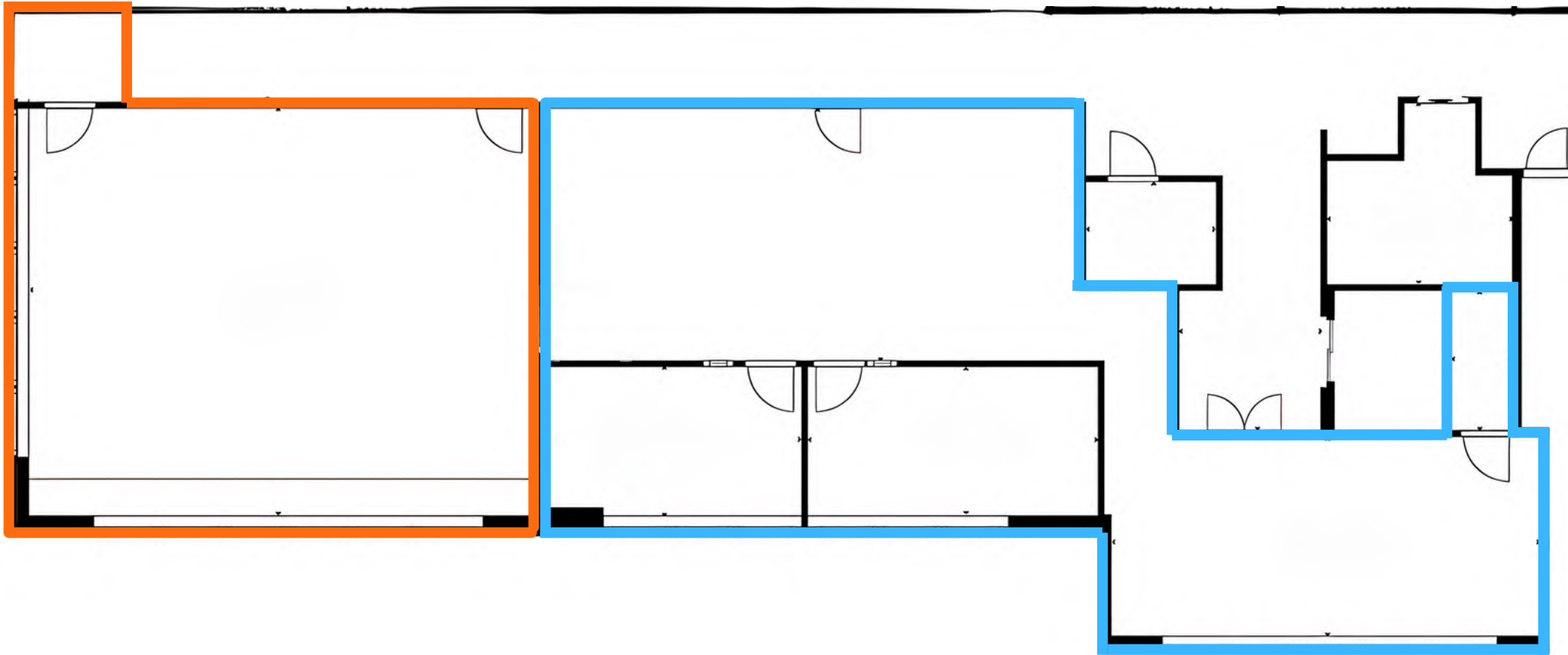
**3D TOUR**

**CLICK HERE**



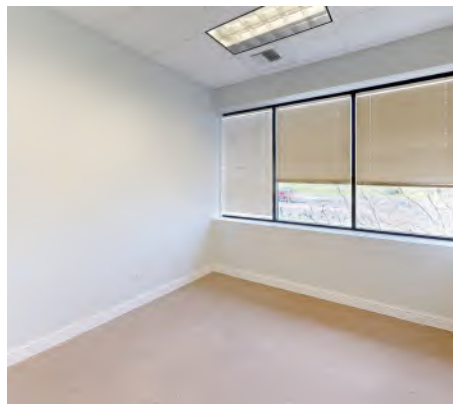
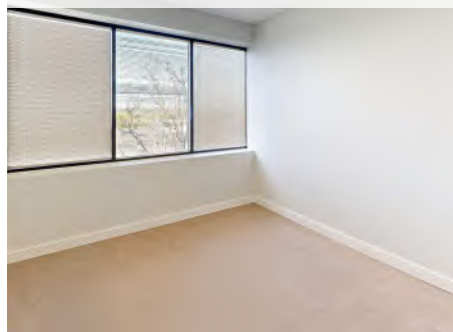
**3D TOUR**

**CLICK HERE**



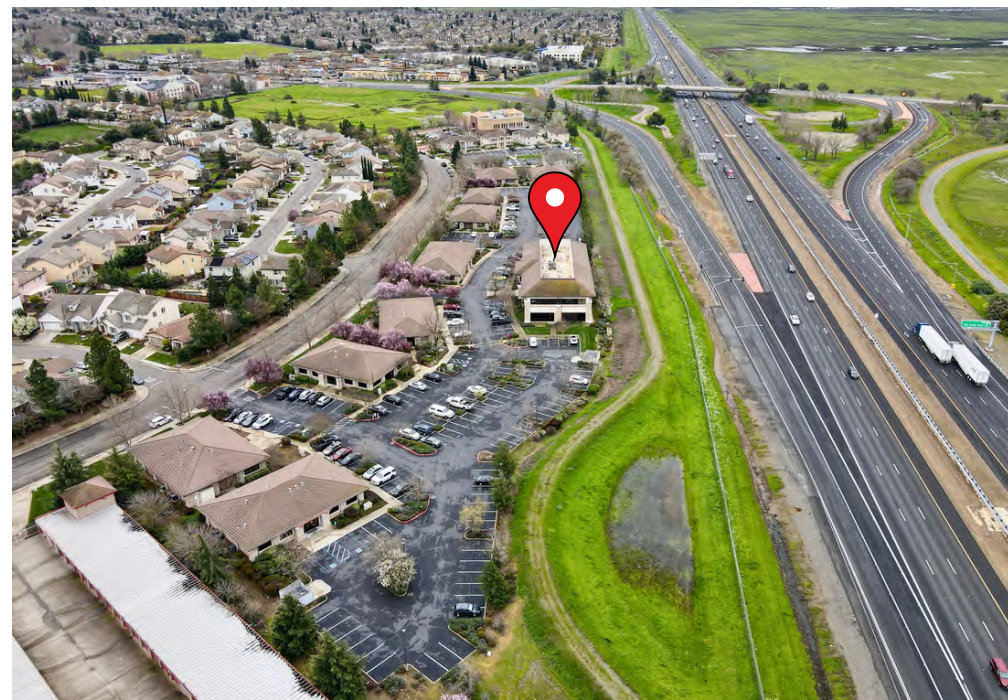
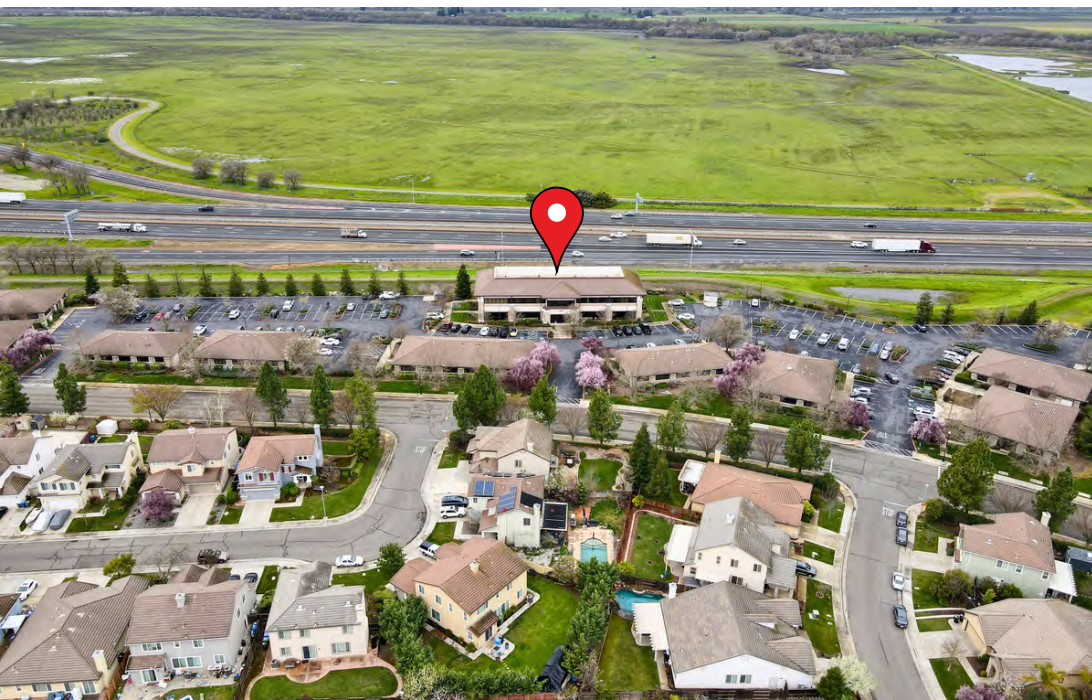


# INTERIOR PICTURES





# EXTERIOR PICTURES



# IMMEDIATE VICINITY AERIAL

CONSUMNES RIVER BLVD

**HOBBY LOBBY** RC Willey  
**Walmart**  
Chick-fil-A jamba

**target** **sam's club**

EST. 1970  
**COSUMNES RIVER COLLEGE**



BRUCEVILLE RD

FRANKLIN BLVD

**TACO BELL** **Wendy's** **Shell** **KFC** **Chevron**

**target** **Michael's**  
**Total Wine & MORE**  
**Party City**

PROPERTY LOCATION



**Holiday Inn Express** **ARCO** **Huckleberry's** **Kacie's DONUTS**  
AN IHG HOTEL  
**Rescate coffee** **McDonald's** **ORIGINAL Pete's** **Chevron**  
**Smog'N'go** PIZZA - PASTA - GRILL **Shell**

LAGUNA BLVD

**SAFeway** **BEL AIR** **ROUND TABLE PIZZA ROYALTY**  
**CVS pharmacy** **Jack in the box** **W**

ELK GROVE BLVD

**CALIFORNIA NORTHSTATE UNIVERSITY**  
**OZ KOREAN BBQ**

**Raley's SUPERCUTS**  
**CHIPOTE MEXICAN GRILL** **Starbucks** **Chase**

**TRADER JOE'S** **COSTCO WHOLESALE**  
**KOHL'S**

# DEMOGRAPHIC SUMMARY REPORT

2368 MARITIME DR, ELK GROVE, CA 95758



## POPULATION 2023 ESTIMATE

1-MILE RADIUS	11,033
3-MILE RADIUS	58,812
5-MILE RADIUS	184,559

## POPULATION 2028 PROJECTION

1-MILE RADIUS	11,296
3-MILE RADIUS	60,391
5-MILE RADIUS	190,403



## HOUSEHOLD INCOME 2023 AVERAGE

1-MILE RADIUS	\$131,408.00
3-MILE RADIUS	\$127,560.00
5-MILE RADIUS	\$107,272.00

## HOUSEHOLD INCOME 2023 MEDIAN

1-MILE RADIUS	\$113,628.00
3-MILE RADIUS	\$109,742.00
5-MILE RADIUS	\$88,231.00



## POPULATION 2023 BY ORIGIN

	1-MILE RADIUS	3-MILE RADIUS	5-MILE RADIUS
WHITE	4,592	26,014	75,544
BLACK	1,308	7,093	30,287
HISPANIC ORIGIN	2,046	12,660	47,898
AM.INDIAN & ALASKAN	86	546	2,090
ASIAN	3,986	19,249	57,296
HAWAIIAN/PACIFIC ISLAND	105	839	4,533
OTHER	956	5,070	14,809



# CONTACT US!

## TO LEARN MORE ABOUT THESE OFFICE SUITES



*Chase Burke*

**PARTNER | RETAIL BROKERAGE  
AND INVESTMENT SALES**

916.705.8132  
chase@romecre.com  
DRE: 01879336



(916) 932-2199



chase@romecre.com  
andy@romecre.com



@romeregroup



2901 K Street, Suite 306, Sacramento, CA 95816  
101 Parkshore Drive, Suite 100, Folsom, CA 95630



*Andy Jonsson*

**PARTNER | RETAIL BROKERAGE  
AND INVESTMENT SALES**

916.813.8409  
andy@romecre.com  
DRE: 02076108

