

# TEMECULA CORPORATE PARK

43385 BUSINESS PARK DRIVE, TEMECULA, CALIFORNIA 92590

## FOR LEASE

## PROFESSIONAL OFFICE SPACE



**FOR MORE INFORMATION, PLEASE CONTACT:**

**CAREY PASTOR** | Senior Vice President

(951) 297-7434 | [cpastor@cbcsocalgroup.com](mailto:cpastor@cbcsocalgroup.com)

CalDRE License # 01403298



**COLDWELL BANKER  
COMMERCIAL**  
SC



# TEMECULA CORPORATE PARK

43385 BUSINESS PARK DRIVE, TEMECULA, CALIFORNIA 92590

FOR LEASE

PROFESSIONAL OFFICE SPACE

## PROPERTY HIGHLIGHTS

- Professional office space for lease
- Impressive corporate image
- Prestigious business park environment
- Striking, 2-story atrium lobby
- Well-appointed building finishes
- Elevator served building
- Ample parking



# TEMECULA CORPORATE PARK

43385 BUSINESS PARK DRIVE, TEMECULA, CALIFORNIA 92590

FOR LEASE

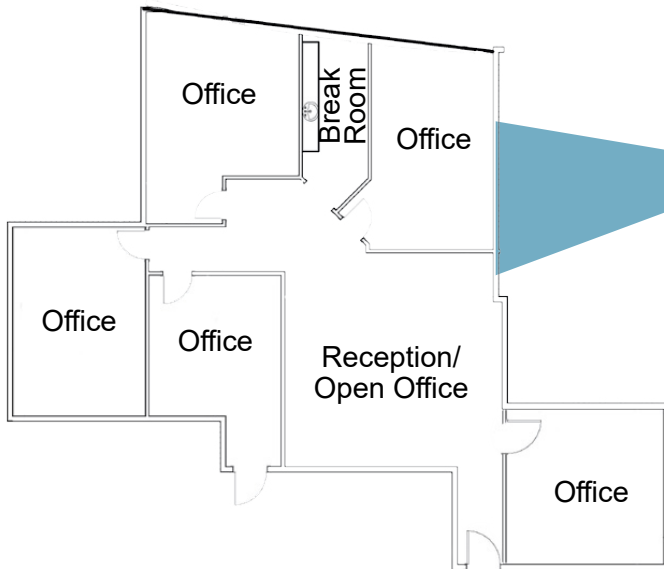
PROFESSIONAL OFFICE SPACE

## AVAILABILITY

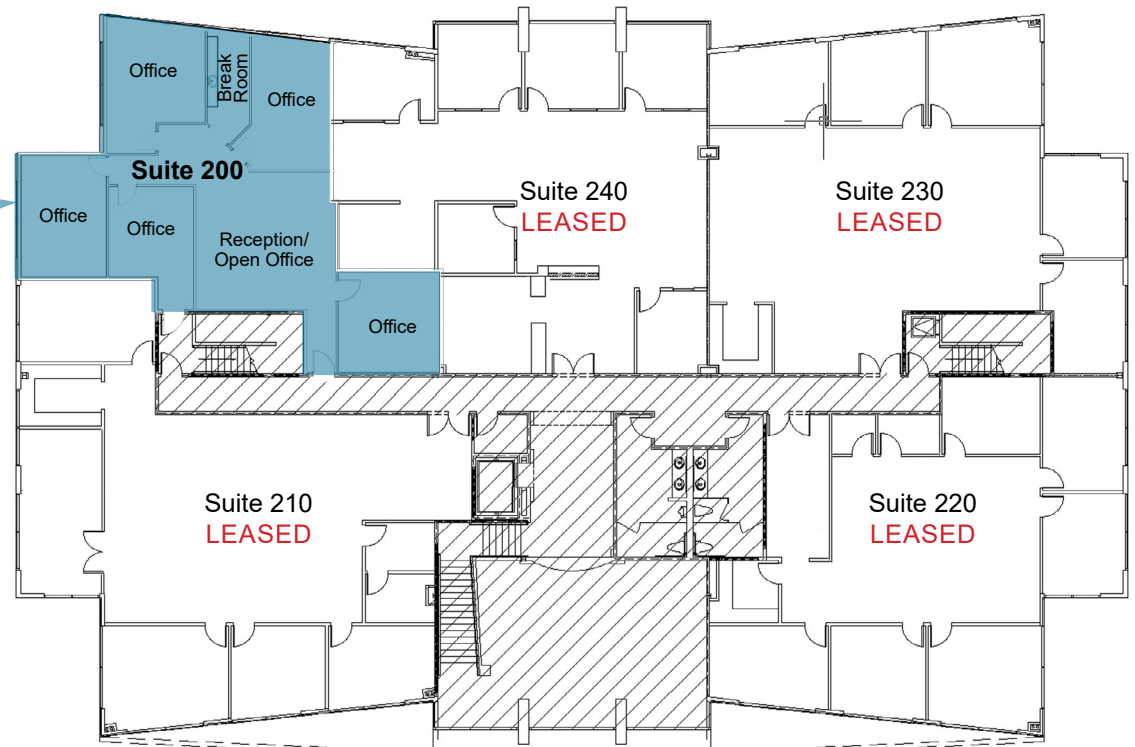
SUITE	RENTABLE SQ.FT.	MONTHLY LEASE RATE	DESCRIPTION
200	±2,141 SF	\$2,484.00 Base Rent + CAO <sup>E</sup> * per month	Second floor elevator served suite consisting of a reception area, 5 private offices, and break room Available May 1, 2026

\*2026 Estimated CAO<sup>E</sup> = \$1,478.00 per month

**SUITE 200  
FLOOR PLAN**



**SECOND FLOOR**



\* Not to scale



# TEMECULA CORPORATE PARK

43385 BUSINESS PARK DRIVE, TEMECULA, CALIFORNIA 92590

## FOR LEASE

## PROFESSIONAL OFFICE SPACE



Coldwell Banker Commercial and the Coldwell Banker Commercial Logo are registered service marks licensed to Coldwell Banker Commercial Affiliates. Each Office is Independently Owned and Operated. All information contained herein has been obtained from sources deemed reliable. However, no warranty or guarantee is made as to the accuracy of the information.

CalDRE License # 02089395



# TEMECULA CORPORATE PARK

43385 BUSINESS PARK DRIVE, TEMECULA, CALIFORNIA 92590

FOR LEASE

PROFESSIONAL OFFICE SPACE





# TEMECULA CORPORATE PARK

43385 BUSINESS PARK DRIVE, TEMECULA, CALIFORNIA 92590

FOR LEASE

PROFESSIONAL OFFICE SPACE



FOR MORE INFORMATION, PLEASE CONTACT:

**CAREY PASTOR**

Senior Vice President

951.297.7434

[cpastor@cbcsocalgroup.com](mailto:cpastor@cbcsocalgroup.com)

CalDRE # 01403298

27368 Via Industria | Suite 102  
Temecula | California | 92590  
t 951.200.7683 | f 951.239.3147  
[cbcsocalgroup.com](http://cbcsocalgroup.com)



**COLDWELL BANKER  
COMMERCIAL**  
SC