



400 Cherry Ave SE  
Canton, Ohio 44702

LEASE RATE	\$2.25/SF/NNN
TOTAL SQ FT	33,000
PARCEL	232202
LAND	0.92 Acre
ZONING	B4
OH DOORS	1
DOCKS	3

### Property Features

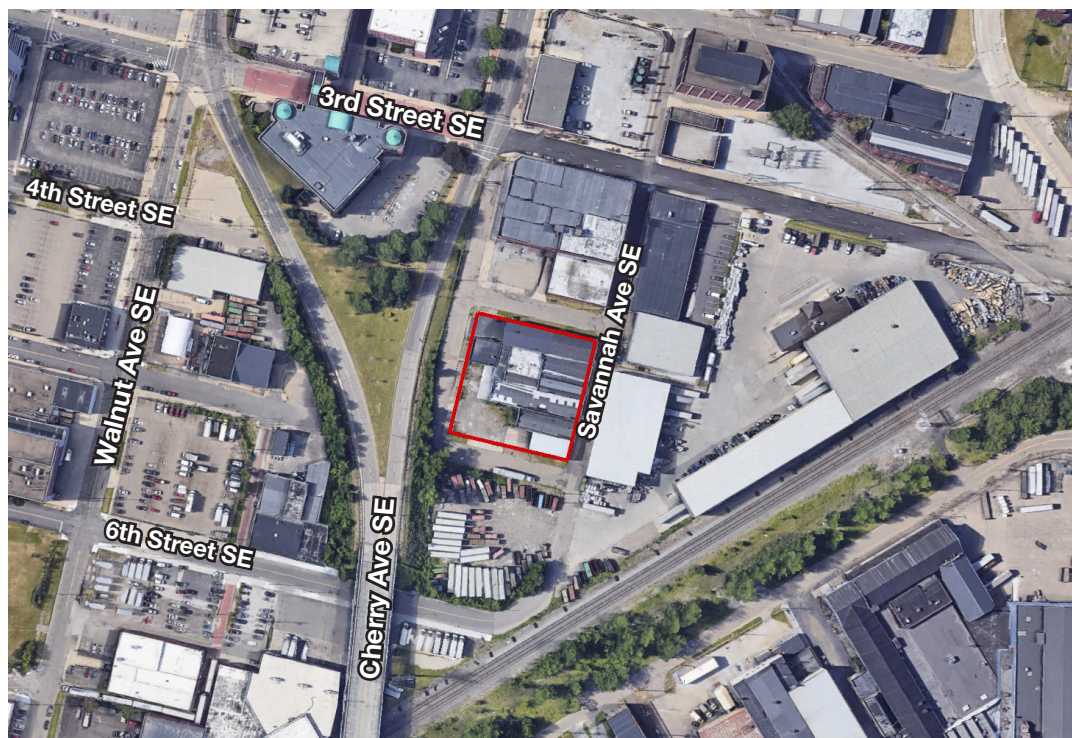
- Approximately 1,500/SF of office.
- Fenced in yard.
- Improvements include: (5) new Reznor heaters in warehouse, (2) new garage door access areas, new large cement pad in front of the 10' garage door, (3) bathrooms remodeled, (2) new water heaters, new floor in offices, updated heating/cooling system in offices, new water line from road in to building.
- 1/2 mile from Route 30, just over 1 mile to I-77.

**Greg Luntz**

330 936 3665 • [greg@naispring.com](mailto:greg@naispring.com)



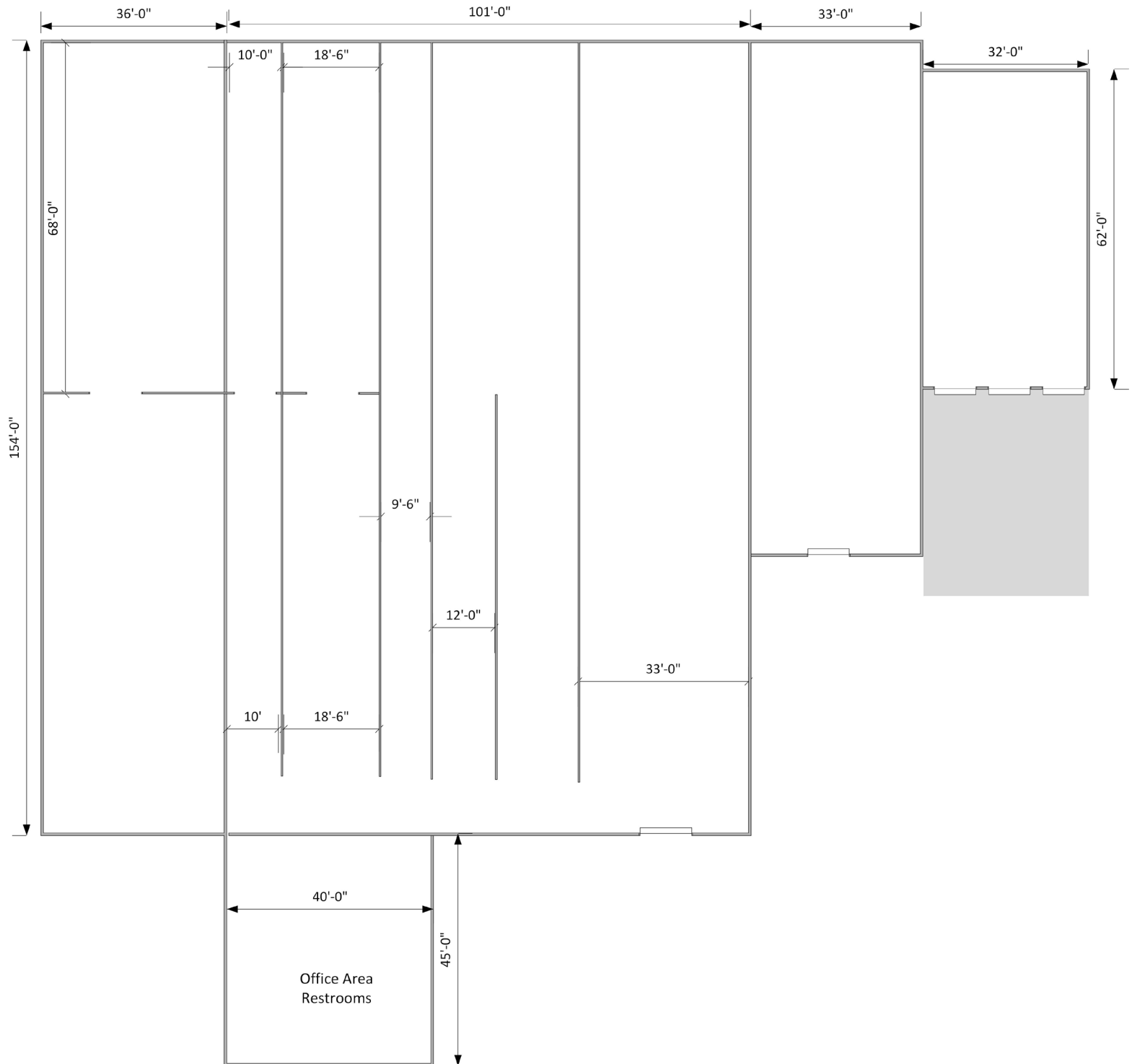
# PHOTOS



NO WARRANTY OR REPRESENTATION, EXPRESS OR IMPLIED, IS MADE AS TO THE ACCURACY OF THE INFORMATION CONTAINED HEREIN, AND THE SAME IS SUBMITTED SUBJECT TO ERRORS, OMISSIONS, CHANGE OF PRICE, RENTAL OR OTHER CONDITIONS, PRIOR SALE, LEASE OR FINANCING, OR WITHDRAWAL WITHOUT NOTICE, AND OF ANY SPECIAL LISTING CONDITIONS IMPOSED BY OUR PRINCIPALS NO WARRANTIES OR REPRESENTATIONS ARE MADE AS TO THE CONDITION OF THE PROPERTY OR ANY HAZARDS CONTAINED THEREIN ARE ANY TO BE IMPLIED.

8234 Pittsburg Ave NW  
North Canton, Ohio 44720  
330-966-8800  
[naispring.com](http://naispring.com)

# FLOOR PLAN



NO WARRANTY OR REPRESENTATION, EXPRESS OR IMPLIED, IS MADE AS TO THE ACCURACY OF THE INFORMATION CONTAINED HEREIN, AND THE SAME IS SUBMITTED SUBJECT TO ERRORS, OMISSIONS, CHANGE OF PRICE, RENTAL OR OTHER CONDITIONS, PRIOR SALE, LEASE OR FINANCING, OR WITHDRAWAL WITHOUT NOTICE, AND OF ANY SPECIAL LISTING CONDITIONS IMPOSED BY OUR PRINCIPALS NO WARRANTIES OR REPRESENTATIONS ARE MADE AS TO THE CONDITION OF THE PROPERTY OR ANY HAZARDS CONTAINED THEREIN ARE ANY TO BE IMPLIED.

8234 Pittsburg Ave NW  
North Canton, Ohio 44720  
330-966-8800  
[naispring.com](http://naispring.com)