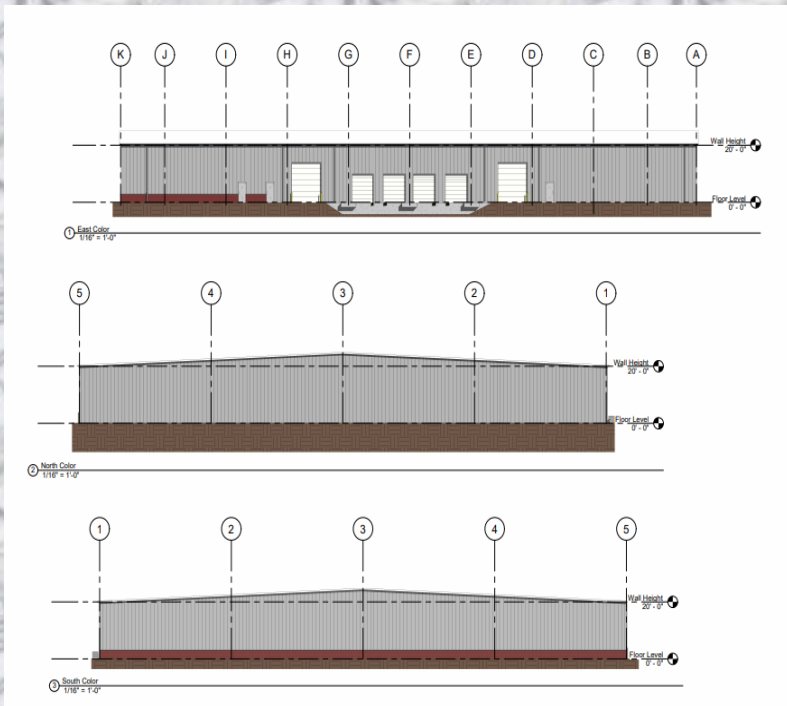




Disidore & Company
 KANSAS CITY REAL ESTATE SOLUTIONS

For Lease
12,000 Square Feet



20500 W 185th Terr
Spring Hill, Kansas

- **169 Hwy Frontage**
- **2 dks, 1 Drive in (14x14)**
- **20'-24' Clear Height**
- **Yard storage available**
- **300 SF of office**
- **\$9.85 PSF Net**

For more information contact:

Disidore & Co.
 Thomas Disidore
 Mobile: 913-908-9933
 tom@disidore.com
 P.O. Box 1544
 Mission, Ks. 66222