

1510 YORK

DENVER.CO 80206

Second Floor | FOR LEASE

734-2,518 SF



THE JOHN HAND BUILDING

Property Overview

- Within walking distance of countless restaurants, bars, retail amenities on historic Colfax Ave. (Walker's Paradise: 93/100)
- Includes exterior open area and kitchen

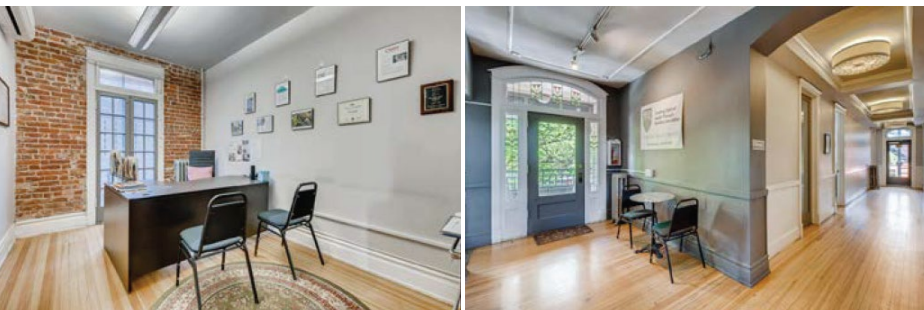


Bldg Size **9,819 RSF**

Availability **743-2,518 RSF**

Year Built **1925**

Walk Score **93/100**



Lease Rate:

\$1,400-1,800/Month

(Tenant pays their own electricity and janitorial)

NAL Shames Makovsky

Ana Sandomire

303 565 3029

asandomire@shamesmakovsky.com

Peter Knisely

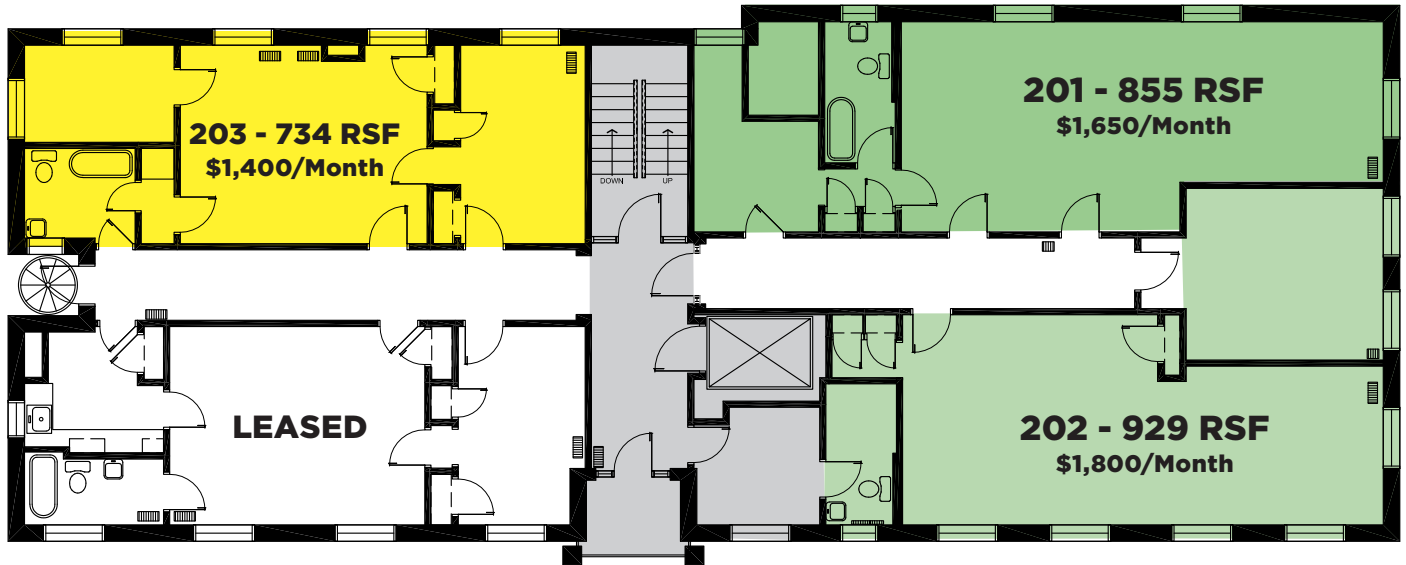
720 881 7534

pknisely@shamesmakovsky.com

SECOND FLOOR

201/202 Contiguous Unit
1,784 RSF

- Two private offices
- Exterior conference room
- Open area



- 1 Chuey Fu's
- 2 Ya Yahs
- 3 Sap Sua
- 4 Starbucks
- 5 The DNVR Bar
- 6 Rolling Pin Pizza

- 7 Okinawa
- 8 Jimmy John's
- 9 Subway
- 10 Chipotle
- 12 Illegal Pete's
- 13 Atomic Cowboy

- 14 Mezcal
- 15 Pete's Kitchen
- 16 Omonia Bakery
- 17 Little Beast Street Food
- 18 Tommy's Thai
- 19 Chick-Fil-A

- 20 Sprouts Market
- 21 Walgreens
- 22 Bar Max
- 23 Carla Madison Rec Center
- 24 Savageau Coffee

NAI Shames Makovsky

NO WARRANTY OR REPRESENTATION, EXPRESS OR IMPLIED, IS MADE AS TO THE ACCURACY OF THE INFORMATION CONTAINED HEREIN, AND THE SAME IS SUBMITTED SUBJECT TO ERRORS, OMISSIONS, CHANGE OF PRICE, RENTAL OR OTHER CONDITIONS, PRIOR SALE, LEASE OR FINANCING, OR WITHDRAWAL WITHOUT NOTICE, AND OF ANY SPECIAL LISTING CONDITIONS IMPOSED BY OUR PRINCIPALS NO WARRANTIES OR REPRESENTATIONS ARE MADE AS TO THE CONDITION OF THE PROPERTY OR ANY HAZARDS CONTAINED THEREIN ARE ANY TO BE IMPLIED.

Ana Sandomire

303 565 3029

asandomire@shamesmakovsky.com

Peter Knisely

720 881 7534

pknisely@shamesmakovsky.com