



# For Lease

## 3915 Capitol Avenue, City of Industry, CA

±7,347 SF of Industrial Space Available

- Free Standing Building on ±23,086 SF of Land
- ±1,600 SF Office Space
- 1 Ground Level Loading Door
- 16' Clearance Height
- 100 amps, 277/480 volt /3 phase power
- Excellent Manufacturing Distribution Building
- Centrally Located Between the 605 and 60 Freeways

**William Kim**  
Senior Vice President  
+1 626 283 4563  
will.kim@colliers.com

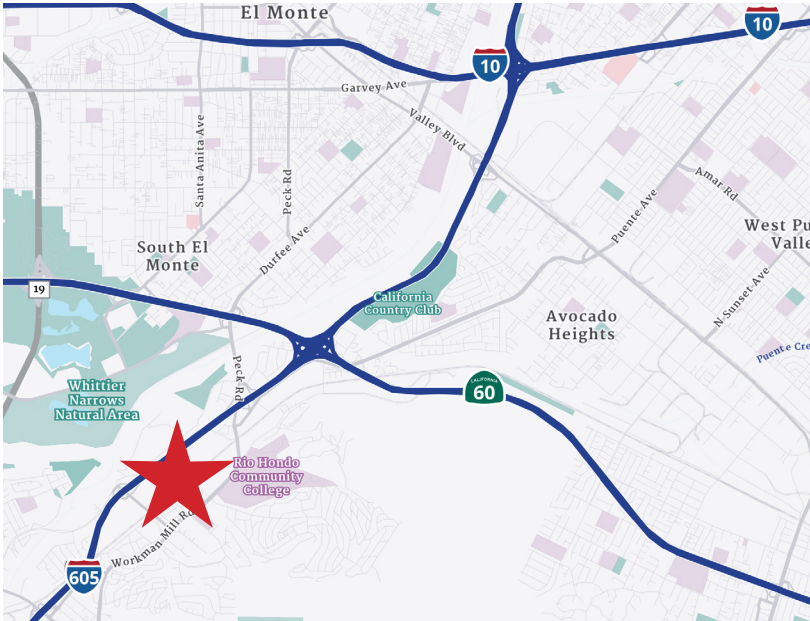
**Stephen C. Calhoun, SIOR**  
Senior Executive Vice President  
+1 323 278 3111  
steve.calhoun@colliers.com

17800 Castleton St., Suite 495  
City of Industry, CA 91748  
P: +1 909 605 9400  
colliers.com

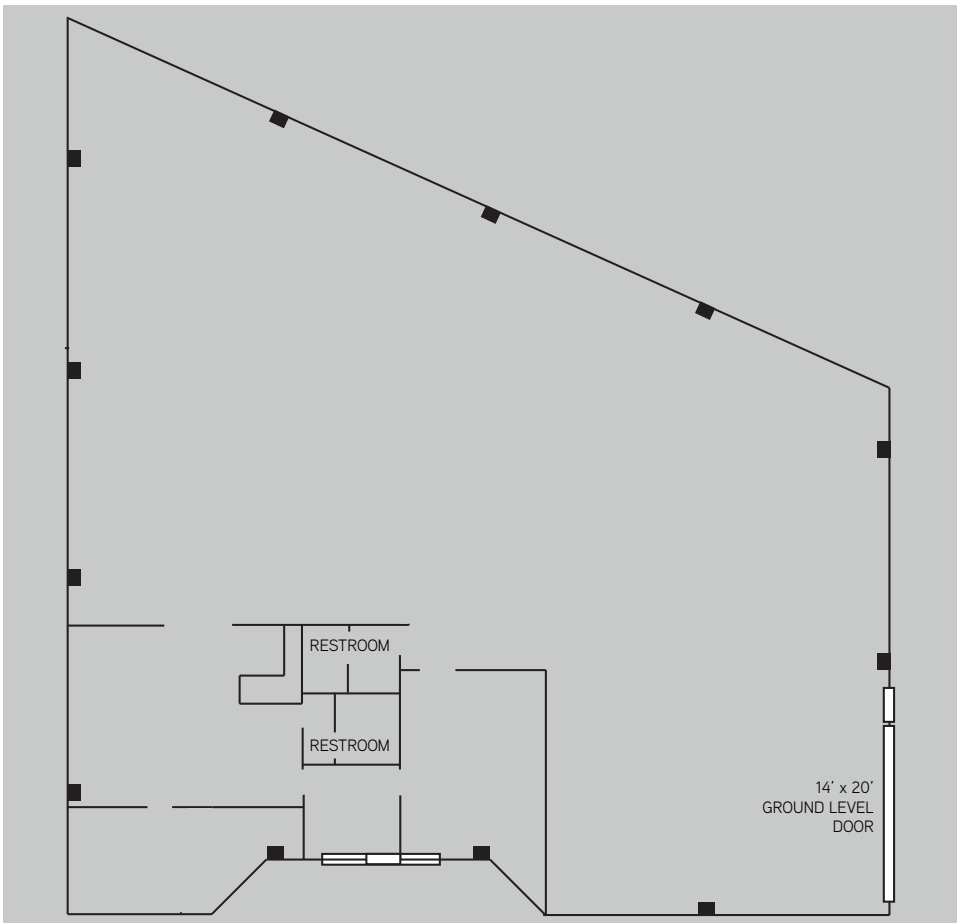
Copyright © 2026 Colliers International. Information herein has been obtained from sources deemed reliable, however its accuracy cannot be guaranteed. The user is required to conduct their own due diligence and verification.

# For Lease

## Area Map



## Floor Plan



### Contact us:

#### William Kim

Senior Vice President  
+1 626 283 4563  
will.kim@colliers.com

#### Stephen C. Calhoun, SIOR

Senior Executive Vice President  
+1 323 278 3111  
steve.calhoun@colliers.com

### Colliers

17800 Castleton St, Suite 495  
City of Industry, CA 91748  
P: +1 909 605 9400  
colliers.com