



## MEDICAL OFFICE SUBLEASE

# 3510 Old Washington Road Cambridge Professional Center

### Property Highlights

- 6,784 RSF
- 120,000 SF of medical office space within Cambridge Professional Center
- Occupancy: 1<sup>st</sup> Quarter 2025
- Termination Date: 10/31/2026



Cambridge Professional Center



FOR SUBLEASE

# 3510 Old Washington Rd

Waldorf, Maryland



## MAP

**DOUGLAS BRINKLEY**  
+1 410 347 1140  
[douglas.brinkley@cushwake.com](mailto:douglas.brinkley@cushwake.com)

**CHARLES FENWICK**  
+1 410 953 6693  
[charles.fenwick@cushwake.com](mailto:charles.fenwick@cushwake.com)

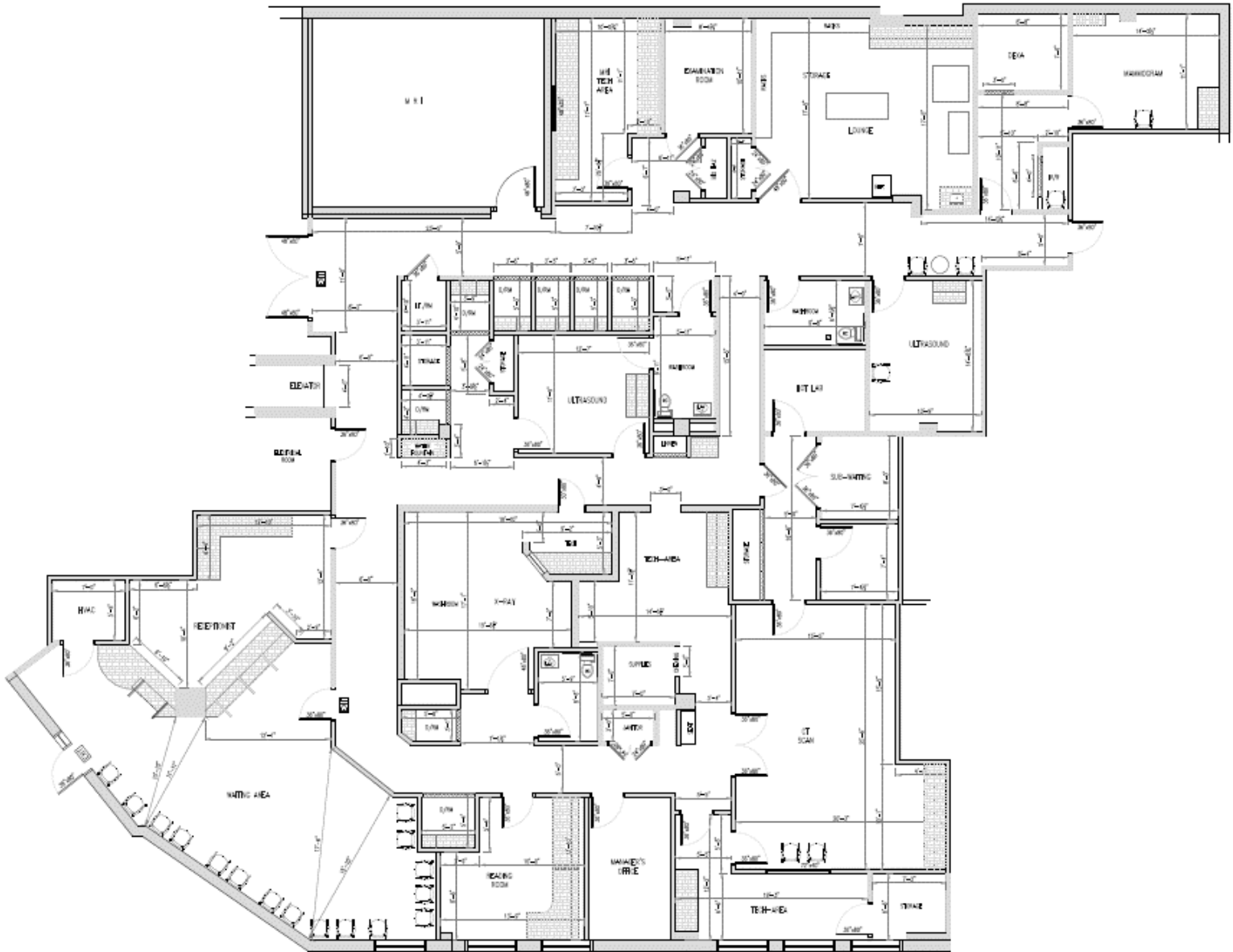
**ALEX LIGHT**  
+1 410 864 3552  
[alex.light@cushwake.com](mailto:alex.light@cushwake.com)

©2020 Cushman & Wakefield. All rights reserved. The information contained in this communication is strictly confidential. This information has been obtained from sources believed to be reliable but has not been verified. NO WARRANTY OR REPRESENTATION, EXPRESS OR IMPLIED, IS MADE AS TO THE CONDITION OF THE PROPERTY (OR PROPERTIES) REFERENCED HEREIN OR AS TO THE ACCURACY OR COMPLETENESS OF THE INFORMATION CONTAINED HEREIN, AND SAME IS SUBMITTED SUBJECT TO ERRORS, OMISSIONS, CHANGE OF PRICE, RENTAL OR OTHER CONDITIONS, WITHDRAWAL WITHOUT NOTICE, AND TO ANY SPECIAL LISTING CONDITIONS IMPOSED BY THE PROPERTY OWNER(S). ANY PROJECTIONS, OPINIONS OR ESTIMATES ARE SUBJECT TO UNCERTAINTY AND DO NOT SIGNIFY CURRENT OR FUTURE PROPERTY PERFORMANCE.

FOR SUBLEASE

# 3510 Old Washington Rd

Waldorf, Maryland



## FLOORPLAN

**DOUGLAS BRINKLEY**  
+1 410 347 1140  
[douglas.brinkley@cushwake.com](mailto:douglas.brinkley@cushwake.com)

**CHARLES FENWICK**  
+1 410 953 6693  
[charles.fenwick@cushwake.com](mailto:charles.fenwick@cushwake.com)

**ALEX LIGHT**  
+1 410 864 3552  
[alex.light@cushwake.com](mailto:alex.light@cushwake.com)

©2020 Cushman & Wakefield. All rights reserved. The information contained in this communication is strictly confidential. This information has been obtained from sources believed to be reliable but has not been verified. NO WARRANTY OR REPRESENTATION, EXPRESS OR IMPLIED, IS MADE AS TO THE CONDITION OF THE PROPERTY (OR PROPERTIES) REFERENCED HEREIN OR AS TO THE ACCURACY OR COMPLETENESS OF THE INFORMATION CONTAINED HEREIN, AND SAME IS SUBMITTED SUBJECT TO ERRORS, OMISSIONS, CHANGE OF PRICE, RENTAL OR OTHER CONDITIONS, WITHDRAWAL WITHOUT NOTICE, AND TO ANY SPECIAL LISTING CONDITIONS IMPOSED BY THE PROPERTY OWNER(S). ANY PROJECTIONS, OPINIONS OR ESTIMATES ARE SUBJECT TO UNCERTAINTY AND DO NOT SIGNIFY CURRENT OR FUTURE PROPERTY PERFORMANCE.