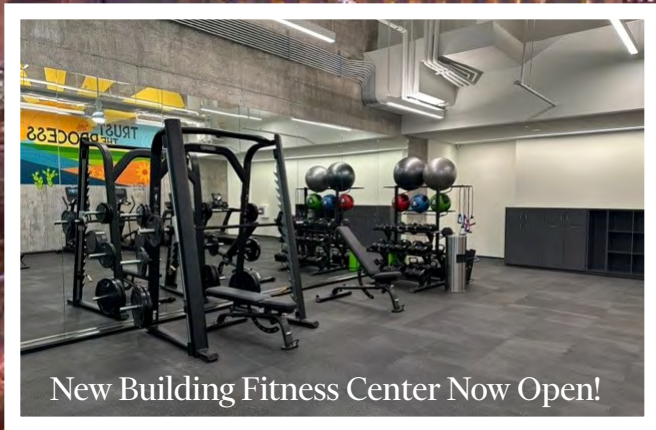


CBRE



New Building Fitness Center Now Open!

THE QUINCY

*HIGH END PLUG & PLAY SUBLEASE WITH
DOWNTOWN & LAKE VIEWS*

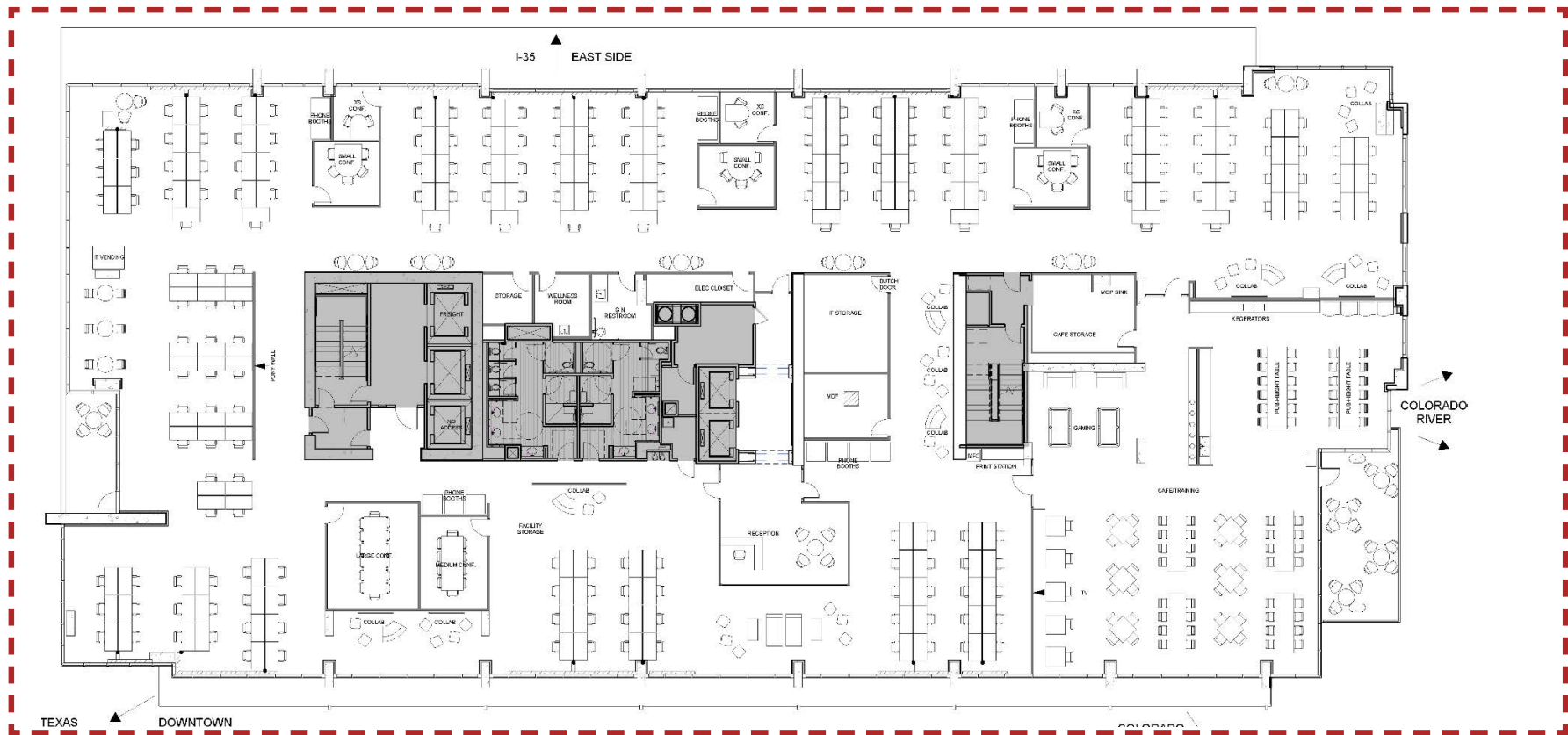


SPACE HIGHLIGHTS

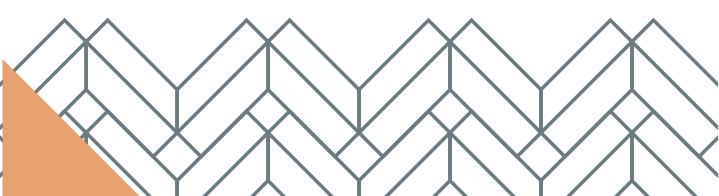
- + Option 1: Full Floor - ~26,000 RSF
- + Option 2: 11,474 RSF
- + Option 3: 14,627 RSF
- + Available Immediately
- + Lease Expiration: 1/31/2030
Shorter Term Available (2-3 years) for Full Floor
- + Rental Rate: **\$49.00 Full Service**
- + 3.0/1,000 SF **FREE**
- + Full-Floor Plug & Play Opportunity
- + Class A+ Creative Office
- + Space has never been occupied
- + Private balcony overlooking downtown



9TH FLOOR

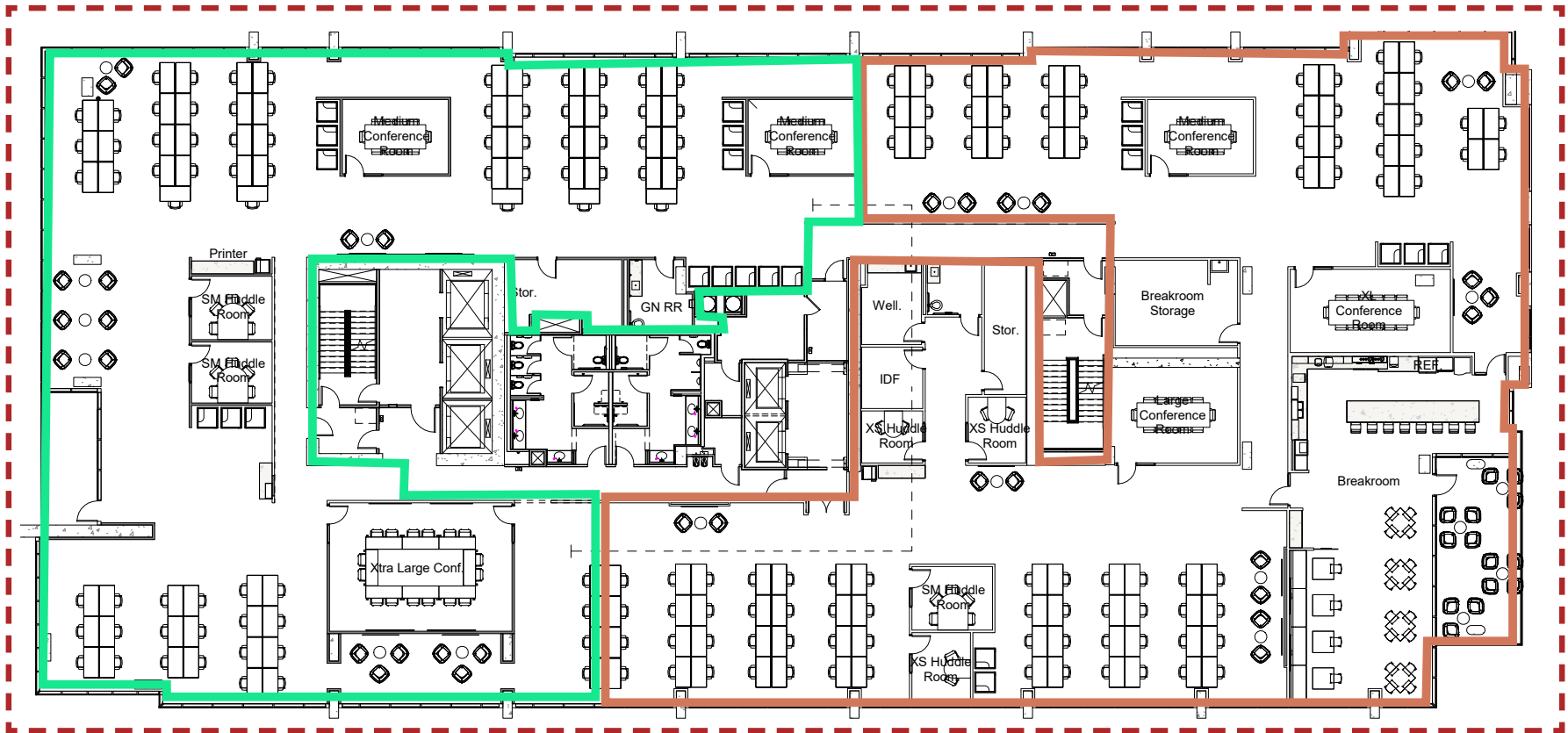


+ Full Floor - 26,083 RSF



10TH FLOOR

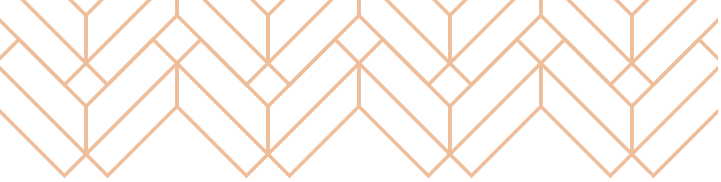
[CLICK HERE FOR VIRTUAL TOUR](#)



+ Option 1: Full Floor - 26,101 RSF

+ Option 2: 11,474 RSF

+ Option 3: 14,627 RSF



[CLICK HERE FOR VIRTUAL TOUR](#)



ACCESS/ PARKING



THE QUINCY



Parking

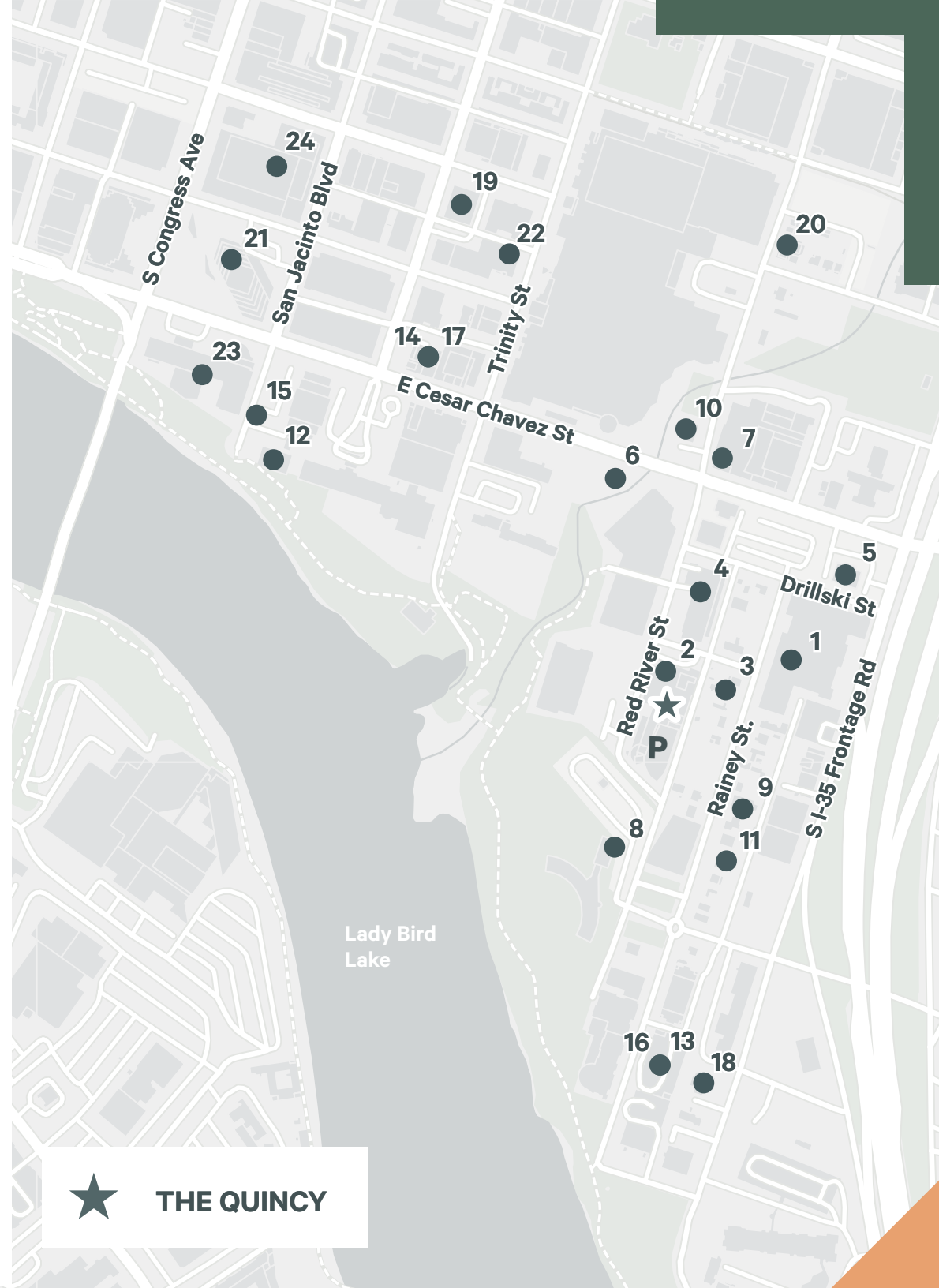


Ingress/Egress Routes



WALKABLE LUNCH SPOTS

#	Restaurant Name	Restaurant Type	Walking Time
1	Anthem	Asian Fusion	1 minute
2	Blue Grocery	Grocery Store with Lunch Specials	1 minute
3	Asador	Mexican	2 minutes
4	Geraldines	American (Breakfast/Dinner)	2 minutes
5	IHOP	American	2 minutes
6	Downtown Burgers	Burgers	4 minutes
7	REVUE	Italian/Asian (Breakfast/Dinner)	5 minutes
8	Iron Works BBQ	BBQ	5 minutes
9	Cantina 512	Mexican	5 minutes
10	Bangers	German Biergarten (Sausage/Prezels)	5 minutes
11	Quezzas	Mexican	5 minutes
12	Corinne Austin	American/Seafood	7 minutes
13	Emmer & Rye	American	7 minutes
14	Ciclo	Fine Dining	7 minutes
15	Salvation Pizza	Pizza	8 minutes
16	Zanzibar Rooftop	Trendy with a View	8 minutes
17	Forthright Café	American	9 minutes
18	Moonshine Grill	American	9 minutes
19	Café Blue	Oyster Bar	9 minutes
20	Mai Thai	Thai	9 minutes
21	Cuvee Coffee	Coffee	9 minutes
22	Veracruz Tacos	Mexican	10 minutes
23	Fareground	Food Hall with ~6 Restaurants	10 minutes
24	Corner Restaurant	American	10 minutes



THE QUINCY



Contact Us

Marc Vanderslice

Executive Vice President

+1 512 587 9296

marc.vanderslice@cbre.com

Jon Wheless

First Vice President

+1 512 705 8155

jon.wheless@cbre.com

Ian Sans

Associate

+1 650 279 6449

ian.sans@cbre.com

© 2025 CBRE, Inc. All rights reserved. This information has been obtained from sources believed reliable, but has not been verified for accuracy or completeness. You should conduct a careful, independent investigation of the property and verify all information. Any reliance on this information is solely at your own risk. CBRE and the CBRE logo are service marks of CBRE, Inc. All other marks displayed on this document are the property of their respective owners, and the use of such logos does not imply any affiliation with or endorsement of CBRE. Photos herein are the property of their respective owners. Use of these images without the express written consent of the owner is prohibited.