



Available For Lease

**1811 Lemoyne Ave
Syracuse, NY 13208**

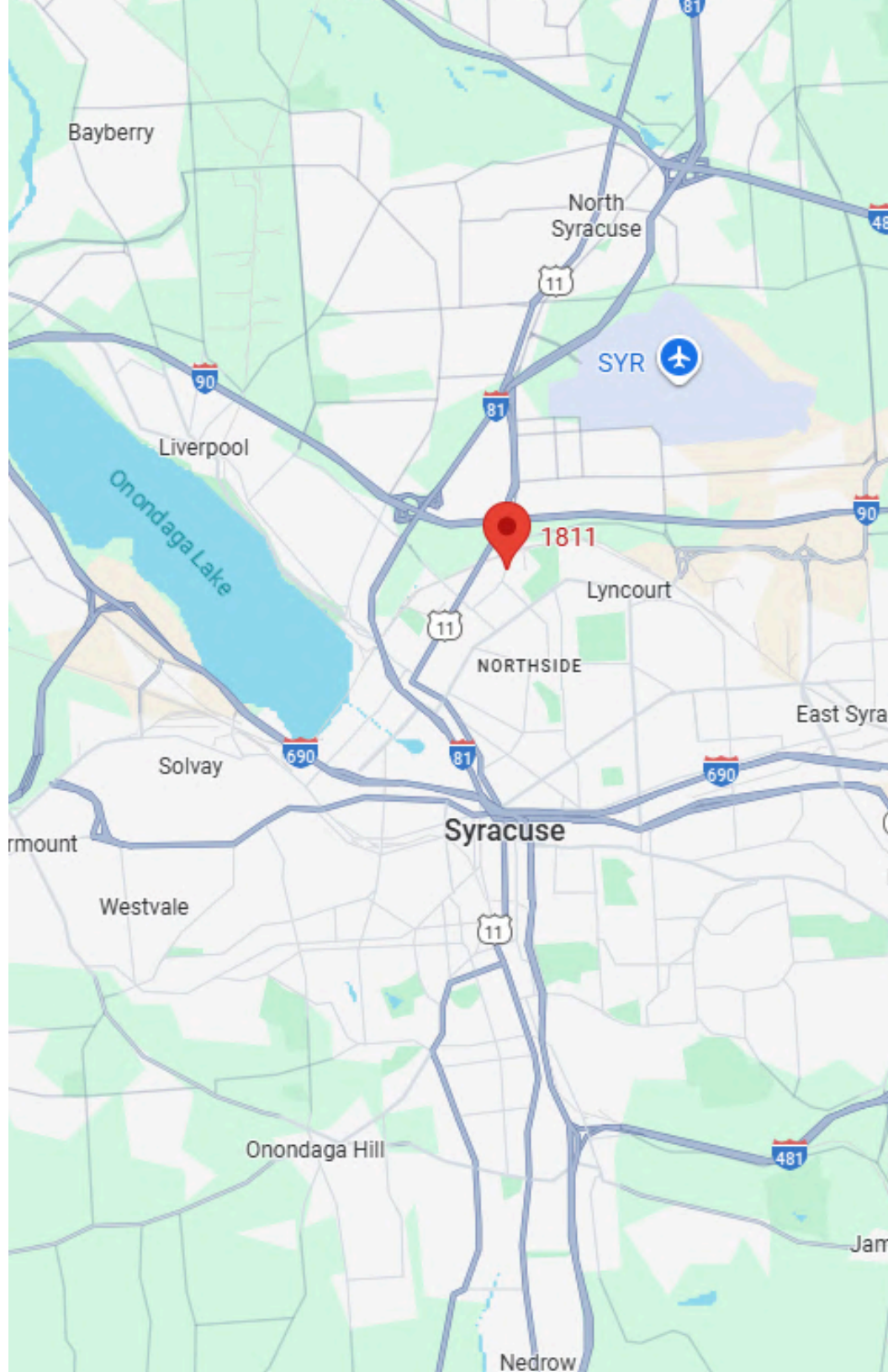


Property Summary

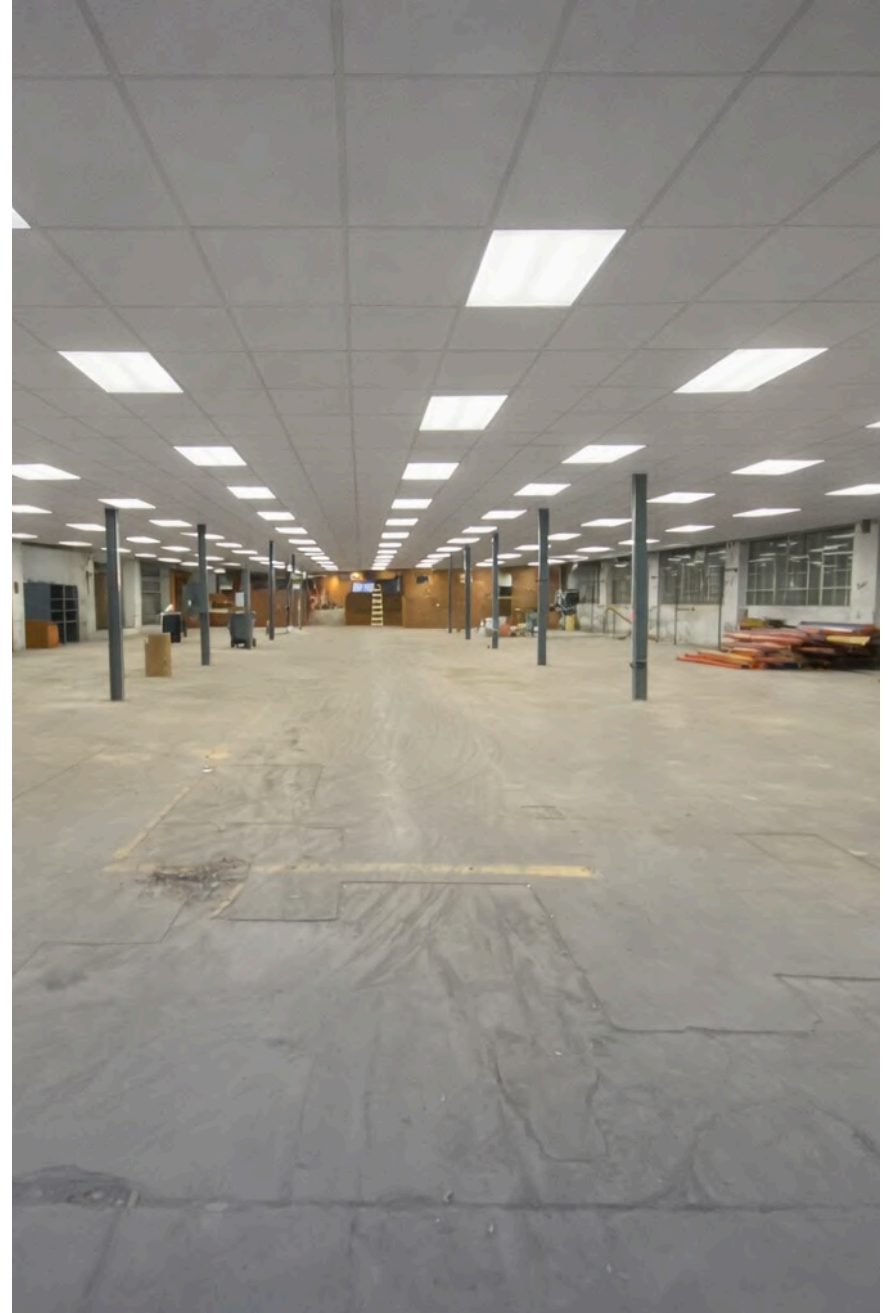
1811 Lemoyne Ave, Syracuse – 61,000 SF single-story masonry industrial facility on 1.5 acres with 19' clear height, wet sprinklers, and 3-phase power. Features 6 drive-ins, 4 docks,, and parking for 40. Zoned O5-Commercial, allowing heavy industrial and bulk storage uses.

PROPERTY SUMMARY

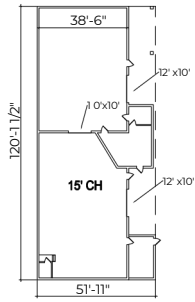
Address	1811 Lemoyne Ave, Syracuse, NY 13208
Type	For Lease
Total SF	61,000
Acreage	1.5
Year Built/Renovated	1938
Dock Doors	4
Drive-ins	6
Clear Height	19'
Zoning	Commercial



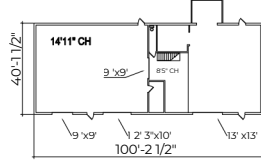
Property Photos



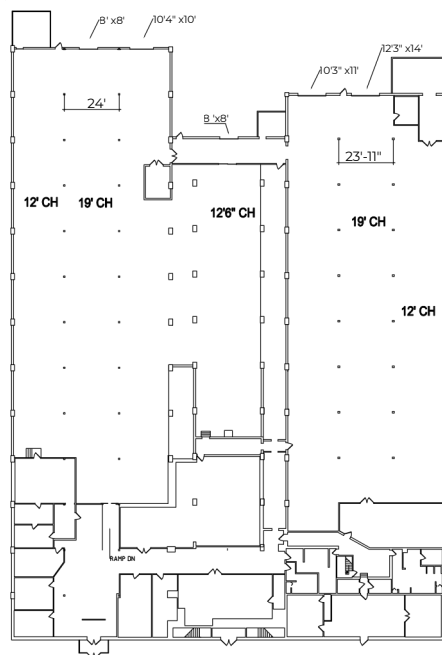
1811 Leymone Ave
Building C 5,350SqFt



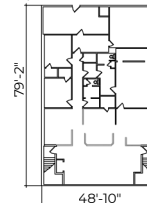
1811 Leymone Ave
Building B 4,160SqFt



1811 Leymone Ave
Building A 46,660SqFt



1811 Leymone Ave
Building APT 3,860SqFt



Prime Industrial Location - Syracuse, NY

1811 LeMoyne Ave is located within a well-established industrial corridor in Syracuse, benefiting from close access to I-81, the NYS Thruway (I-90), and the region's broader logistics network, making it well suited for industrial and commercial operations. The area is already anchored by major employers, including Amazon's large fulfillment facility nearby in the Town of Clay, and is poised for significant growth with Micron Technology's planned semiconductor campus in Onondaga County, which will bring substantial investment, jobs, and supply-chain demand to Central New York—further reinforcing the site's prime industrial real estate positioning.

Distance

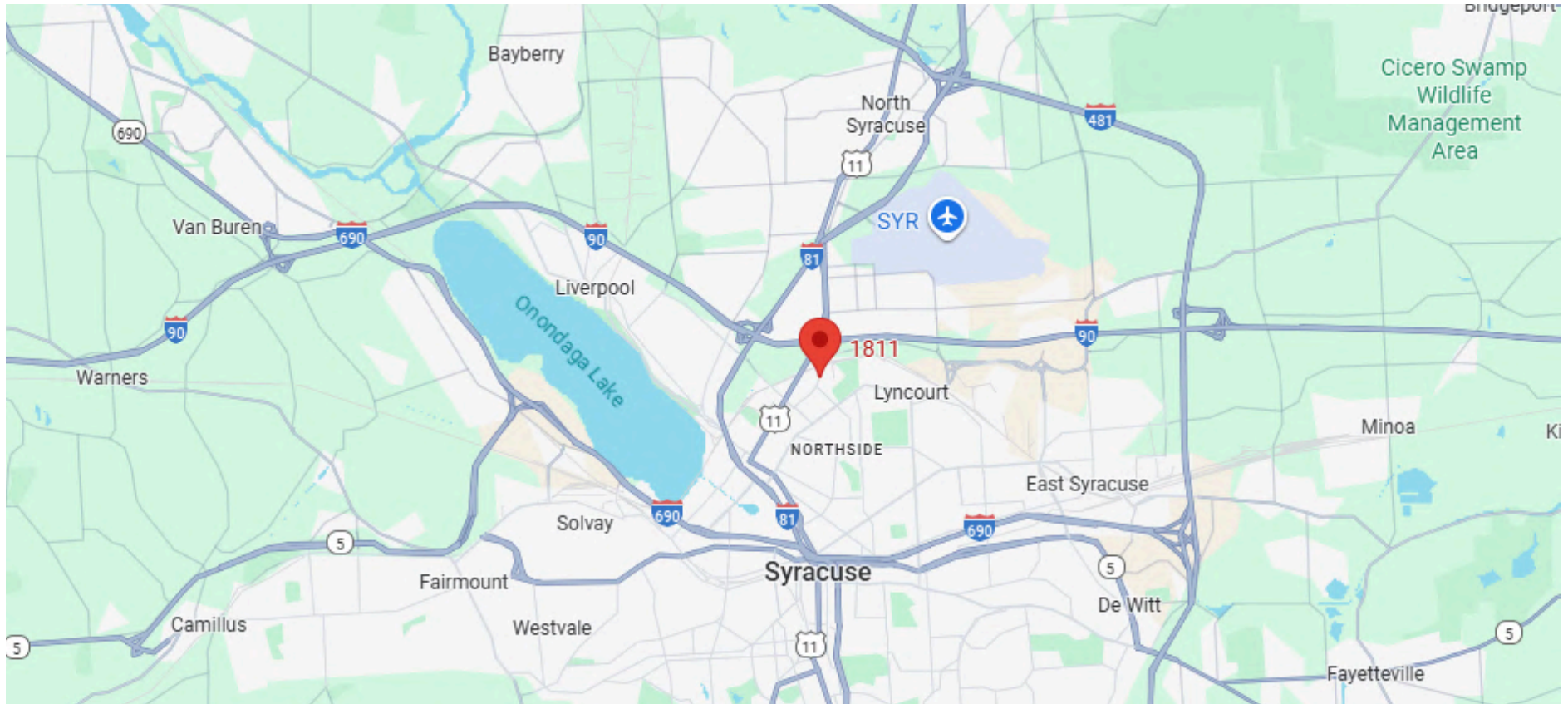
Downtown Syracuse - 3 Miles

SYR Airport - 2.6 Miles

I-90 - 1.5 Miles

I-81 - 1.6 Miles

I-481 - 7 Miles





Matt DePerro



Leasing Officer



315-720-9731



Matt@IronHornEnterprises.com

Available For Lease

**1811 Lemoyne Ave
Syracuse, NY 13208**

