

PROPERTY FOR SALE OR LEASE

320 N MAIN STREET
GOSHEN IN 46528



TWO INDUSTRIAL BUILDINGS

M-1 ZONING

PROPERTY HIGHLIGHTS

- TOTAL BUILDINGS—13,065 SF
- EXCELLENT LOCATION
- AMPLE PARKING
- RIGHT OFF SR 15
- FOR LEASE - \$5.25 PSF
- REIMBURSEMENTS \$1.29 PSF
(TAX AND INSURANCE)
- FRESH REMODEL JUST COMPLETED
- WITH ALL NEW FLOORING, PAINT IN SIDE AND
OUT AND A FRESH FRONT FAÇADE
- STAND ALONE COLD STORAGE BUILDING



PROPERTY DETAILS

RECENTLY REMODELED INSIDE AND OUT INDUSTRIAL BUILDING WITH 5 PRIVATE OFFICES AND 3 OPEN CONCEPT BULLPEN OFFICE AREAS. OFFICE STORAGE ROOMS, BREAK ROOM AND TWO RESTROOMS. THE WAREHOUSE SPACE FEATURES A DOCK WAREHOUSE WITH DOCK DOOR, MAIN WAREHOUSE WITH TWO OVERHEAD DOORS, PAINT ROOM, EXPLOSION PROOF ROOM, COMPRESSOR ROOM AND A STORAGE ROOM. THE SECOND WAREHOUSE IS DRY STORAGE ONLY. THIS PROPERTY IS AVAILABLE FOR SALE FOR \$520,000 OR FOR LEASE AT \$5.25 PSF. SEE ATTACHED FLOOR PLANS FOR THE MAIN WAREHOUSE 1ST AND SECOND FLOOR.

LOCATION

520 S MAIN STREET, GOSHEN IN 46528 JUST OFF OF MAIN STREET AND SR 15.

TO LEARN MORE, PLEASE CONTACT:

JOSH HENDRICKS, BROKER/OWNER
OFFICE: 269-476-4368
TOLL FREE: (866) 822-9721
CELL: (574) 202-2000
FAX: (574) 651-5469

RESIDENTIAL & COMMERCIAL SALES
REAL ESTATE DEVELOPMENT
PROPERTY MANAGEMENT

JOSH@CREEKSTONEINVESTMENTS.COM
WWW.CREEKSTONEINVESTMENTS.COM
66010 JOSEPH STREET
VANDALIA, MI 49095

PROPERTY FOR SALE OR LEASE

520 SOUTH MAIN STREET
GOSHEN IN 46528

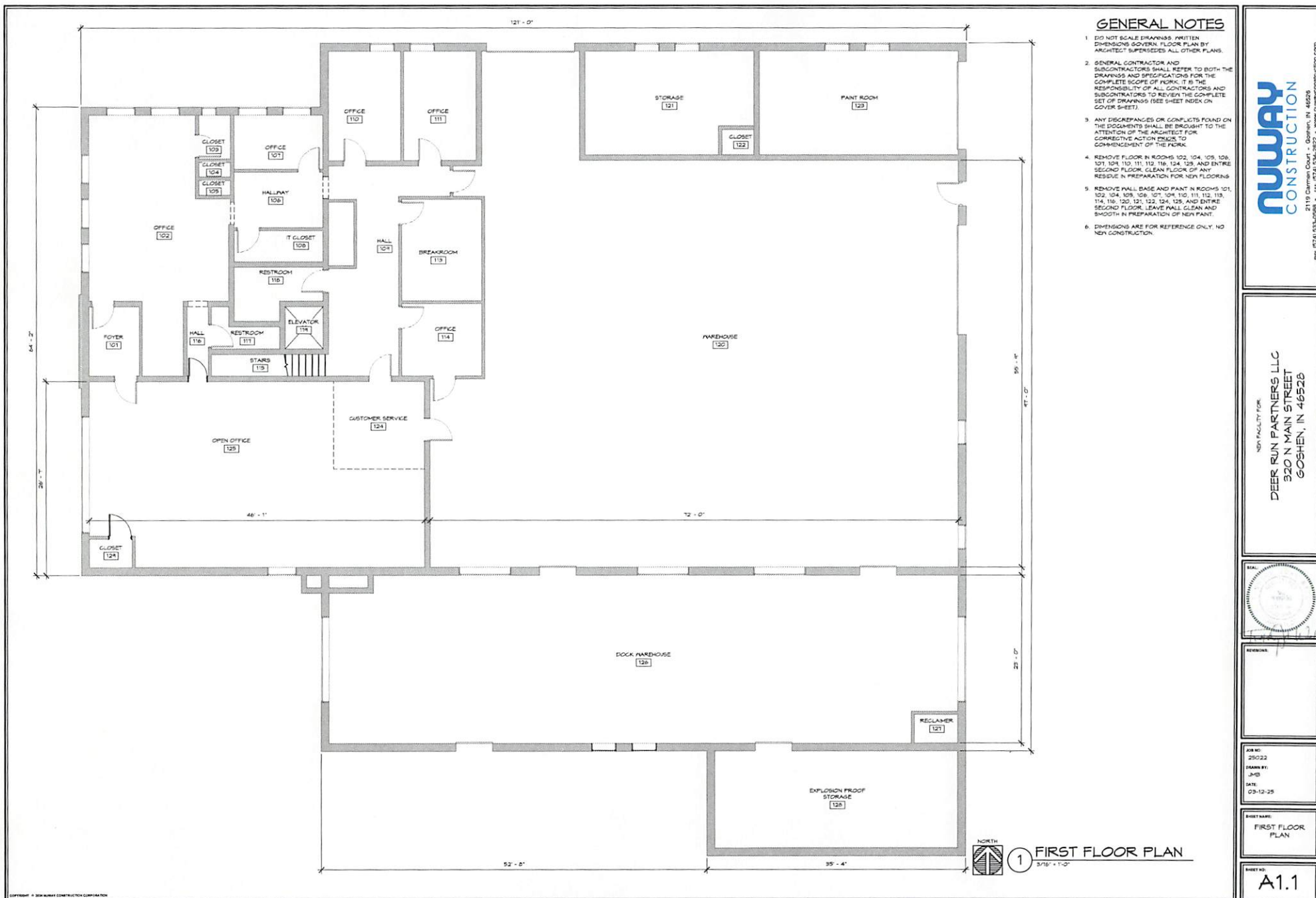


TO LEARN MORE, PLEASE CONTACT:

JOSH HENDRICKS, BROKER/OWNER
OFFICE: (269) 476-4368
TOLL FREE: (866) 822-9721
CELL: (574) 202-2000
FAX: (574) 651-5469

RESIDENTIAL & COMMERCIAL SALES
REAL ESTATE DEVELOPMENT
PROPERTY MANAGEMENT

JOSH@CREEKSTONEINVESTMENTS.COM
WWW.CREEKSTONEINVESTMENTS.COM
66010 JOSEPH STREET
VANDALIA, MI 49095



nuway
CONSTRUCTION

2119 Clanton Court - Goshen, IN 46526
PH: (574) 534-2622 - FAX: (574) 534-2622 - WWW.NUWAYCONSTRUCTION.COM

NOT FACILITY FOR
DEER RUN PARTNERS, LLC
320 N MAIN STREET
GOSHEN, IN 46526



REVISIONS

REV NO: 250/22
DRAWN BY: JMS
DATE: 03-12-25

SHEET NAME:
FIRST FLOOR PLAN

SHEET NO:
A1.1



1 SECOND FLOOR PLAN
1/2" = 1'-0"

1. DETERMINE SOFTEN LOCUS PLAN BY ARCHITECT, BASED ON ALL OTHER PLANS
2. GENERAL CONTRACTOR AND SUBS TO EXAMINE SOFTEN LOCUS PLAN FOR CONFLICTS AND SPECIFICALLY FOR THE COMPLETE LOCUS OF CURB, IF THE LOCUS OF CURB IS NOT SHOWN ON THE ARCHITECT'S DRAWING, THE GENERAL CONTRACTOR IS TO OBTAIN THE COMPLETE LOCUS OF CURB FROM THE CITY OF CHICAGO STREET INDEX
3. ARCHITECT TO PROVIDE A COMPLETE ROAD ALIGNMENT AND TO PROVIDE THE ATTENTION OF THE ARCHITECT FOR THE LOCATION OF THE LOCUS OF CURB TO THE GENERAL CONTRACTOR OF THE WORK
4. REMOVE CURB AT LOCUS 02, 04, 05, 10, 11, 12, 13, 14, 15, 16, 17, 18, 19, 20, 21, 22, 23, 24, 25, 26, 27, 28, 29, 30, 31, 32, 33, 34, 35, 36, 37, 38, 39, 40, 41, 42, 43, 44, 45, 46, 47, 48, 49, 50, 51, 52, 53, 54, 55, 56, 57, 58, 59, 60, 61, 62, 63, 64, 65, 66, 67, 68, 69, 70, 71, 72, 73, 74, 75, 76, 77, 78, 79, 80, 81, 82, 83, 84, 85, 86, 87, 88, 89, 90, 91, 92, 93, 94, 95, 96, 97, 98, 99, 100, 101, 102, 103, 104, 105, 106, 107, 108, 109, 110, 111, 112, 113, 114, 115, 116, 117, 118, 119, 120, 121, 122, 123, 124, 125, 126, 127, 128, 129, 130, 131, 132, 133, 134, 135, 136, 137, 138, 139, 140, 141, 142, 143, 144, 145, 146, 147, 148, 149, 150, 151, 152, 153, 154, 155, 156, 157, 158, 159, 160, 161, 162, 163, 164, 165, 166, 167, 168, 169, 170, 171, 172, 173, 174, 175, 176, 177, 178, 179, 180, 181, 182, 183, 184, 185, 186, 187, 188, 189, 190, 191, 192, 193, 194, 195, 196, 197, 198, 199, 200, 201, 202, 203, 204, 205, 206, 207, 208, 209, 210, 211, 212, 213, 214, 215, 216, 217, 218, 219, 220, 221, 222, 223, 224, 225, 226, 227, 228, 229, 230, 231, 232, 233, 234, 235, 236, 237, 238, 239, 240, 241, 242, 243, 244, 245, 246, 247, 248, 249, 250, 251, 252, 253, 254, 255, 256, 257, 258, 259, 260, 261, 262, 263, 264, 265, 266, 267, 268, 269, 270, 271, 272, 273, 274, 275, 276, 277, 278, 279, 280, 281, 282, 283, 284, 285, 286, 287, 288, 289, 290, 291, 292, 293, 294, 295, 296, 297, 298, 299, 300, 301, 302, 303, 304, 305, 306, 307, 308, 309, 310, 311, 312, 313, 314, 315, 316, 317, 318, 319, 320, 321, 322, 323, 324, 325, 326, 327, 328, 329, 330, 331, 332, 333, 334, 335, 336, 337, 338, 339, 340, 341, 342, 343, 344, 345, 346, 347, 348, 349, 350, 351, 352, 353, 354, 355, 356, 357, 358, 359, 360, 361, 362, 363, 364, 365, 366, 367, 368, 369, 370, 371, 372, 373, 374, 375, 376, 377, 378, 379, 380, 381, 382, 383, 384, 385, 386, 387, 388, 389, 390, 391, 392, 393, 394, 395, 396, 397, 398, 399, 400, 401, 402, 403, 404, 405, 406, 407, 408, 409, 410, 411, 412, 413, 414, 415, 416, 417, 418, 419, 420, 421, 422, 423, 424, 425, 426, 427, 428, 429, 430, 431, 432, 433, 434, 435, 436, 437, 438, 439, 440, 441, 442, 443, 444, 445, 446, 447, 448, 449, 450, 451, 452, 453, 454, 455, 456, 457, 458, 459, 460, 461, 462, 463, 464, 465, 466, 467, 468, 469, 470, 471, 472, 473, 474, 475, 476, 477, 478, 479, 480, 481, 482, 483, 484, 485, 486, 487, 488, 489, 490, 491, 492, 493, 494, 495, 496, 497, 498, 499, 500, 501, 502, 503, 504, 505, 506, 507, 508, 509, 510, 511, 512, 513, 514, 515, 516, 517, 518, 519, 520, 521, 522, 523, 524, 525, 526, 527, 528, 529, 530, 531, 532, 533, 534, 535, 536, 537, 538, 539, 540, 541, 542, 543, 544, 545, 546, 547, 548, 549, 550, 551, 552, 553, 554, 555, 556, 557, 558, 559, 560, 561, 562, 563, 564, 565, 566, 567, 568, 569, 570, 571, 572, 573, 574, 575, 576, 577, 578, 579, 580, 581, 582, 583, 584, 585, 586, 587, 588, 589, 590, 591, 592, 593, 594, 595, 596, 597, 598, 599, 600, 601, 602, 603, 604, 605, 606, 607, 608, 609, 610, 611, 612, 613, 614, 615, 616, 617, 618, 619, 620, 621, 622, 623, 624, 625, 626, 627, 628, 629, 630, 631, 632, 633, 634, 635, 636, 637, 638, 639, 640, 641, 642, 643, 644, 645, 646, 647, 648, 649, 650, 651, 652, 653, 654, 655, 656, 657, 658, 659, 660, 661, 662, 663, 664, 665, 666, 667, 668, 669, 670, 671, 672, 673, 674, 675, 676, 677, 678, 679, 680, 681, 682, 683, 684, 685, 686, 687, 688, 689, 690, 691, 692, 693, 694, 695, 696, 697, 698, 699, 700, 701, 702, 703, 704, 705, 706, 707, 708, 709, 710, 711, 712, 713, 714, 715, 716, 717, 718, 719, 720, 721, 722, 723, 724, 725, 726, 727, 728, 729, 730, 731, 732, 733, 734, 735, 736, 737, 738, 739, 740, 741, 742, 743, 744, 745, 746, 747, 748, 749, 750, 751, 752, 753, 754, 755, 756, 757, 758, 759, 760, 761, 762, 763, 764, 765, 766, 767, 768, 769, 770, 771, 772, 773, 774, 775, 776, 777, 778, 779, 780, 781, 782, 783, 784, 785, 786, 787, 788, 789, 790, 791, 792, 793, 794, 795, 796, 797, 798, 799, 800, 801, 802, 803, 804, 805, 806, 807, 8

DEER RUN PARTNERS LLC
320 N MAIN STREET
GOSHEN, IN 46528



2001

ONE HOUR

JOB NO.
 25022
 DRAWING BY
 JWB
 DATE
 03-12-2

SECOND FLOOR
PLAN

A1.2



2119 Carmen Court - Goshen, IN 46526
PH: (574) 533-0588 - FAX: (574) 534-2822 - www.nuwayconstruction.com