



1230

N. Jefferson St.

Unit M

ANAHEIM, CA

92807

For Sale or Lease

**±4,157 SQ. FT.
INDUSTRIAL/OFFICE CONDO**

Voit
REAL ESTATE SERVICES

UNIT FEATURES



±4,157
SQUARE FEET
(INCLUDING CITY-PERMITTED 2ND FLOOR)



Central HVAC
(REPLACED IN 2021)



8'6" - 16'
CLEAR HEIGHT



1
GROUND LEVEL LOADING DOOR



4
SKYLIGHTS



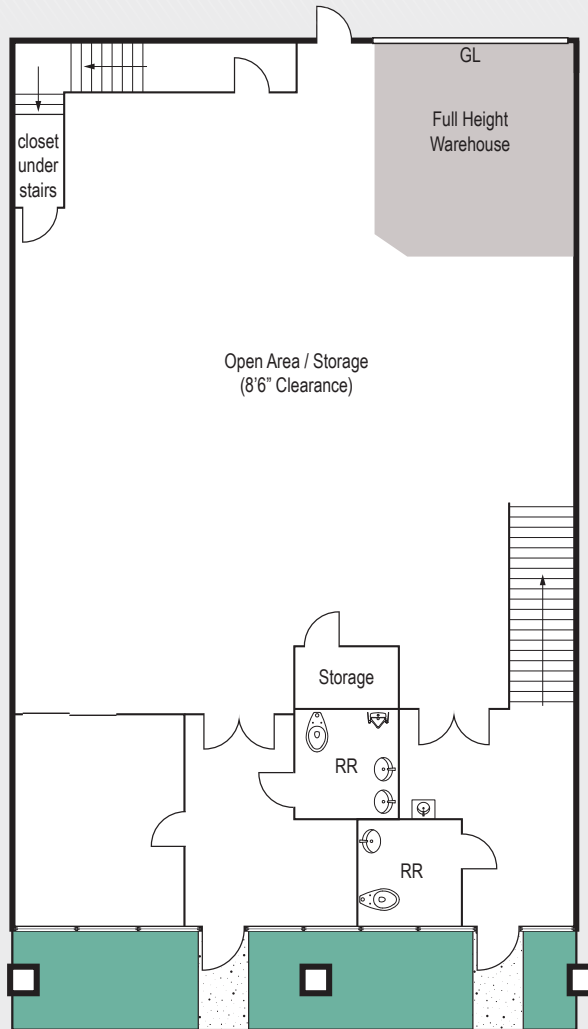
200
AMPS (VERIFY)



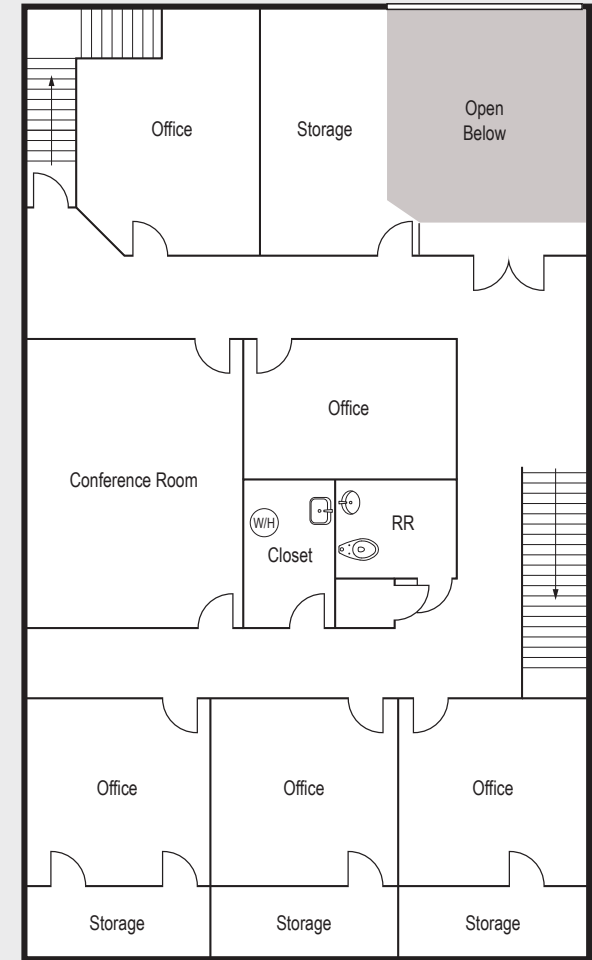
6
RESERVED PARKING SPACES
(EXPANDABLE TO 10)



3
RESTROOMS



First Floor



Second Floor

Note: Floor plans are for illustration purposes only and may not be to scale.

TOM TERRY

Vice President

714.935.2313

tterry@voitco.com

License #02069424

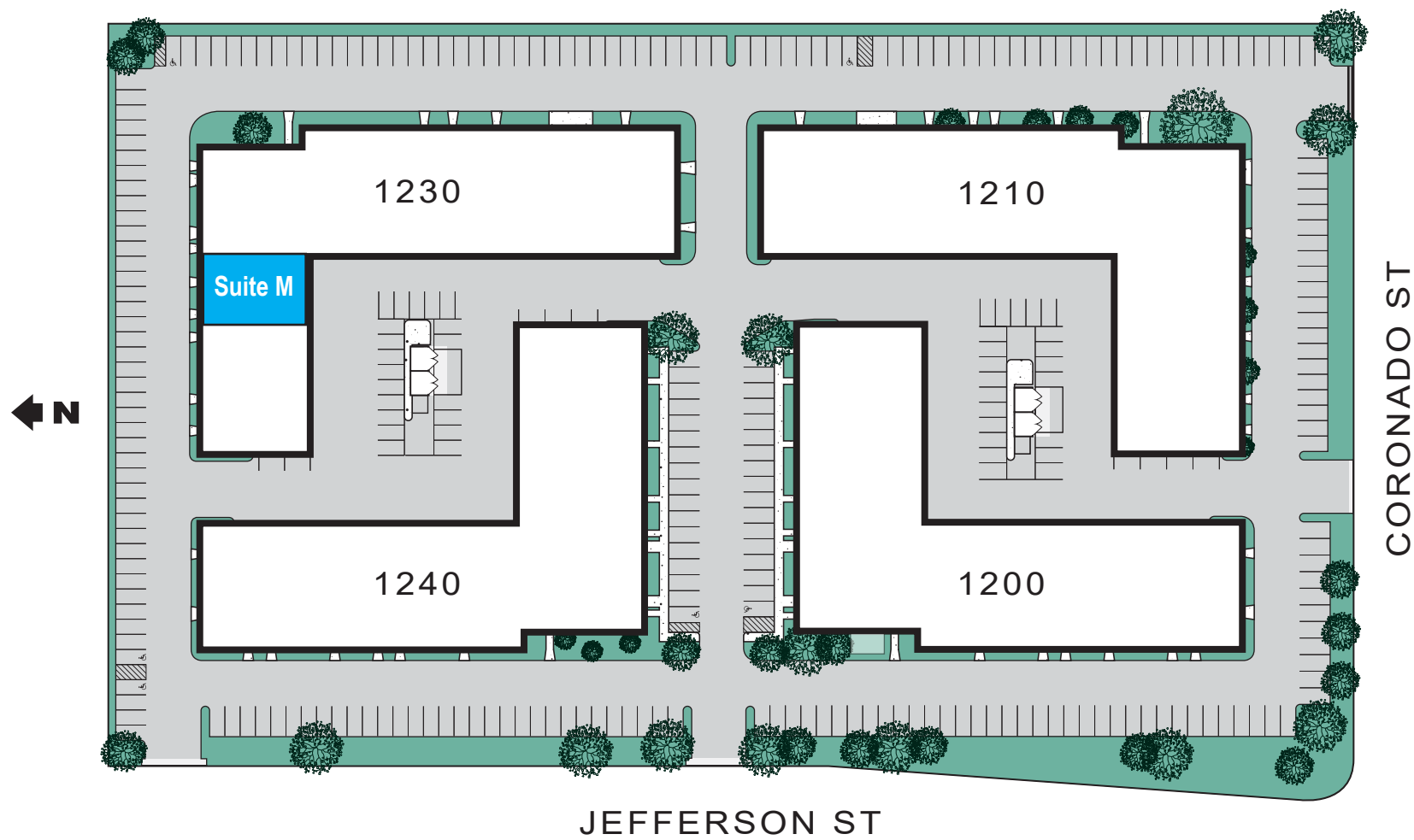
Voit

REAL ESTATE SERVICES

2400 E. Katella Avenue, Suite 750, Anaheim, CA 92806 | voitco.com

Licensed as Real Estate Salespersons by the DRE. The information contained herein has been obtained from sources we deem reliable. While we have no reason to doubt its accuracy, we do not guarantee it. ©2025 Voit Real Estate Services, Inc. All Rights Reserved. License #01991785.

SITE PLAN



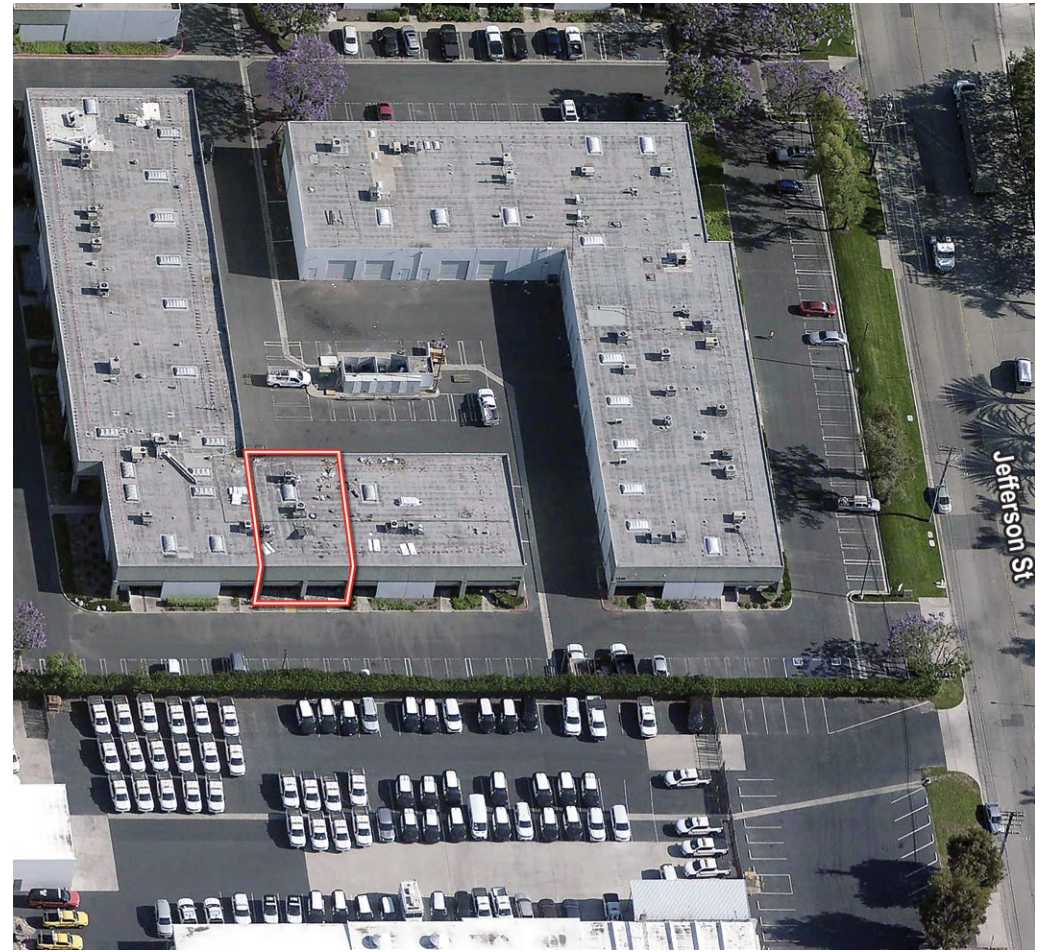
Note: Siteplan is for illustration purposes only and may not be to scale.

TOM TERRY
Vice President
714.935.2313
ttery@voitco.com
License #02069424

Voit
REAL ESTATE SERVICES

2400 E. Katella Avenue, Suite 750, Anaheim, CA 92806 | voitco.com

Licensed as Real Estate Salespersons by the DRE. The information contained herein has been obtained from sources we deem reliable. While we have no reason to doubt its accuracy, we do not guarantee it. ©2025 Voit Real Estate Services, Inc. All Rights Reserved. License #01991785.



TOM TERRY
Vice President
714.935.2313
tterry@voitco.com
License #02069424

Voit
REAL ESTATE SERVICES

2400 E. Katella Avenue, Suite 750, Anaheim, CA 92806 | voitco.com

Licensed as Real Estate Salespersons by the DRE. The information contained herein has been obtained from sources we deem reliable. While we have no reason to doubt its accuracy, we do not guarantee it. ©2025 Voit Real Estate Services, Inc. All Rights Reserved. License #01991785.