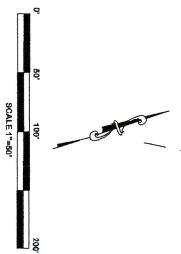
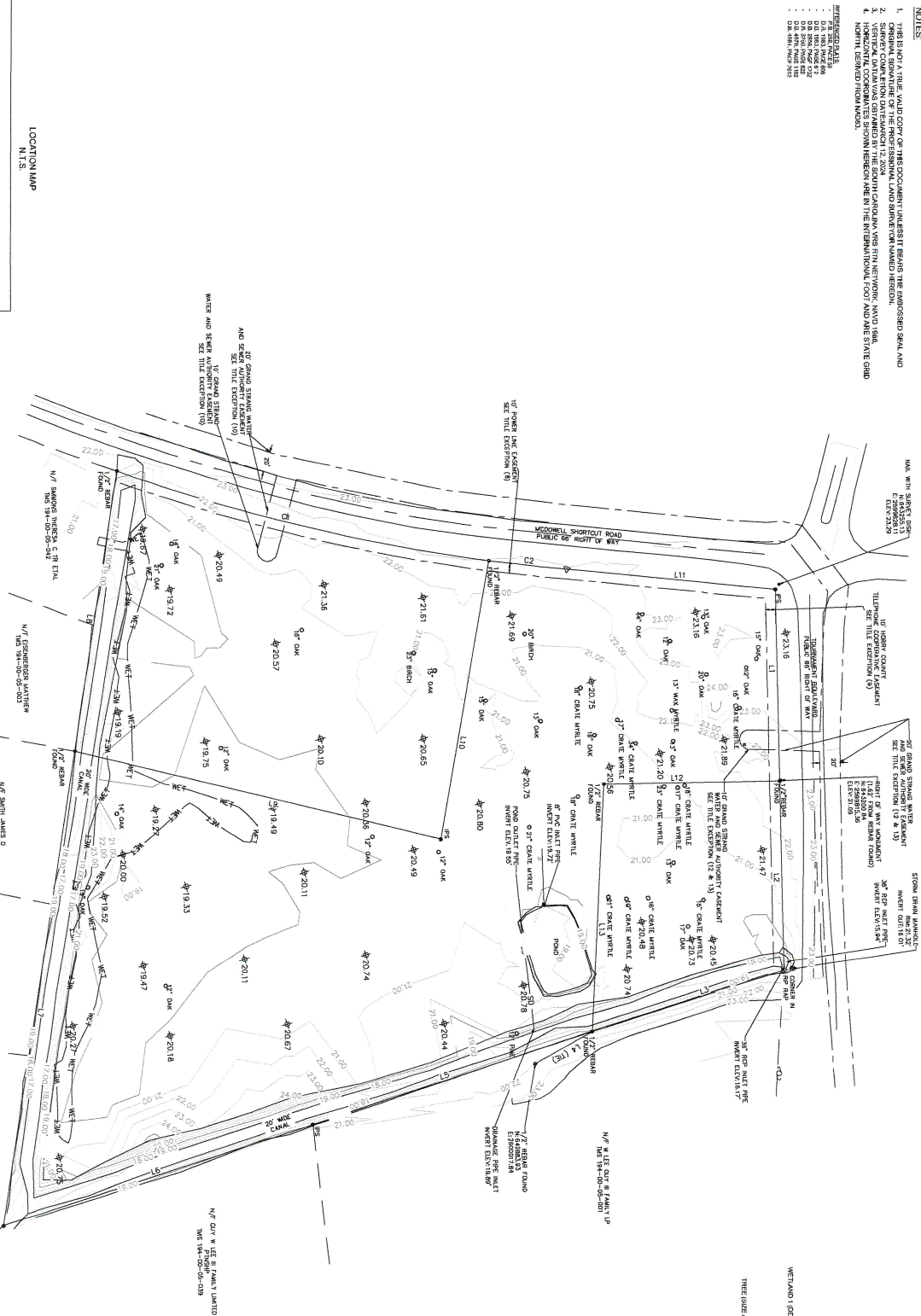
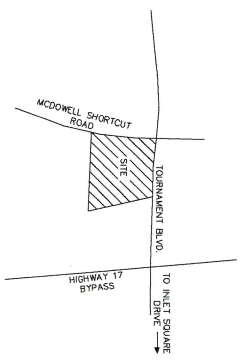




- NOTES**
- THIS IS NOT A TRIBLE MAP OF THE DOCUMENT UNLESS IT BEARS THE EMPRESSED SEAL AND ORIGINAL SIGNATURE OF THE PROFESSIONAL LAND SURVEYOR WMAED HEROLD.
  - VERTICAL DATA WAS OBTAINED BY THE SOUTH CAROLINA VERT NETWORK, WMAED 1984.
  - HORIZONTAL COORDINATES SHOWN HEREON ARE IN THE INTERNATIONAL FOOT AND ARE STATE GRID.
  - HORIZONTAL COORDINATES SHOWN HEREON ARE IN THE INTERNATIONAL FOOT AND ARE STATE GRID.
- SYMBOLS:**
- 1" OAK
  - 2" OAK
  - 3" OAK
  - 4" OAK
  - 5" OAK
  - 6" OAK
  - 7" OAK
  - 8" OAK
  - 9" OAK
  - 10" OAK
  - 11" OAK
  - 12" OAK
  - 13" OAK
  - 14" OAK
  - 15" OAK
  - 16" OAK
  - 17" OAK
  - 18" OAK
  - 19" OAK
  - 20" OAK
  - 21" OAK
  - 22" OAK
  - 23" OAK
  - 24" OAK
  - 25" OAK
  - 26" OAK
  - 27" OAK
  - 28" OAK
  - 29" OAK
  - 30" OAK
  - 31" OAK
  - 32" OAK
  - 33" OAK
  - 34" OAK
  - 35" OAK
  - 36" OAK
  - 37" OAK
  - 38" OAK
  - 39" OAK
  - 40" OAK
  - 41" OAK
  - 42" OAK
  - 43" OAK
  - 44" OAK
  - 45" OAK
  - 46" OAK
  - 47" OAK
  - 48" OAK
  - 49" OAK
  - 50" OAK
  - 51" OAK
  - 52" OAK
  - 53" OAK
  - 54" OAK
  - 55" OAK
  - 56" OAK
  - 57" OAK
  - 58" OAK
  - 59" OAK
  - 60" OAK
  - 61" OAK
  - 62" OAK
  - 63" OAK
  - 64" OAK
  - 65" OAK
  - 66" OAK
  - 67" OAK
  - 68" OAK
  - 69" OAK
  - 70" OAK
  - 71" OAK
  - 72" OAK
  - 73" OAK
  - 74" OAK
  - 75" OAK
  - 76" OAK
  - 77" OAK
  - 78" OAK
  - 79" OAK
  - 80" OAK
  - 81" OAK
  - 82" OAK
  - 83" OAK
  - 84" OAK
  - 85" OAK
  - 86" OAK
  - 87" OAK
  - 88" OAK
  - 89" OAK
  - 90" OAK
  - 91" OAK
  - 92" OAK
  - 93" OAK
  - 94" OAK
  - 95" OAK
  - 96" OAK
  - 97" OAK
  - 98" OAK
  - 99" OAK
  - 100" OAK



**LEGEND**

PROPERTY LINES: ————

RIGHT OF WAY AND EASEMENTS: - - - - -

NON-SUBMERGED LOT LINES: - - - - -

WETLAND (DELIMITED BY ECA SONOTONIC LID): WET - - - - -

MAJOR CONTROLS LINES: 1

MINOR CONTROLS LINES: 5

TREE SIZE AND TYPE SPECIFIED IN DRAWING: ○

IRON PIN FOUND: ●

WETLAND: WETLAND

CALCULATED POINT: △

**Parcel Line Table**

Line #	Length	Direction
L1	198.80	N74°28'43"W
L2	188.94	N74°32'56"W
L3	201.41	N1°20'37"W
L4	64.88	N12°54'00"W
L5	293.25	N1°41'46"W
L6	324.40	N1°33'18"W
L7	461.08	S64°41'54"E
L8	281.72	N64°41'11"W
L9	374.89	N30°20'49"E
L10	289.85	N63°27'12"W
L11	289.89	N27°07'02"E
L12	173.38	S15°33'49"W
L13	249.08	S70°31'49"E

**Curve Table**

Curve #	Length	Radius	Delta	Chord Direction	Chord Length
C1	361.72	1786.81	12.24	N30°24'38"E	361.00
C2	78.05	1786.81	2.50	N22°51'32"E	78.04



**SURVEYORS CERTIFICATE:**

I HEREBY STATE THAT TO THE BEST OF MY KNOWLEDGE, INFORMATION AND BELIEF, THE SURVEY SHOWN HEREON WAS MADE IN ACCORDANCE WITH THE PROVISIONS OF THE SURVEYING ACT OF 1962, AS AMENDED, AND THAT THE SURVEY IS ACCURATE AND CORRECT. THEREIN, ALSO, THERE ARE NO VISIBLE ENCUMBRANCES, UNLESS SHOWN OTHERWISE, AND THE PROPERTY LINES SHOWN ARE THE PROPERTY LINES OF THE SURVEYED LAND.

WMAED HEROLD  
Professional Land Surveyor  
No. 18310  
State of South Carolina

**TOPOGRAPHIC & TREE SURVEY FOR ACADEMICA**

HORRY COUNTY, SOUTH CAROLINA

SCALE: 1" = 50'

SHEET 2 OF 2

**DENNIS CORPORATION**

ENGINEERING | SURVEYING | CONSTRUCTION SERVICES

1800 Huger Street  
Columbia, SC 29201

Office: (803) 252-0961  
Fax: (803) 733-6787

**Professional Land Surveyor Seal for DENNIS CORPORATION, No. 5100, State of South Carolina.**

Checked by: R. FRAZER

ISSUE DATE:	CONSTR. DATE:	BIDS:	PERMITS:
REV. #	DATE	DESCRIPTION	
1			
2			
3			
4			
5			
6			