

6,063 SF FLEX SPACE FOR LEASE

1724 W ACORN DR

ROGERS, ARKANSAS 72758



PALMER HAYS, SIOR MEMBER ASSOCIATE
INDUSTRIAL & LAND SPECIALIST
479.466.8499
PALMER@BENNETTCRE.COM

5512 WEST WALSH LN, #201, ROGERS, AR 72758 | 479.278.4040 | BENNETTCRE.COM

SITE OVERVIEW

AVAILABLE: 6,063 SF

ASKING RENT: \$12.00 PSF

RENT TYPE: NNN

WALL HEIGHT: 12'

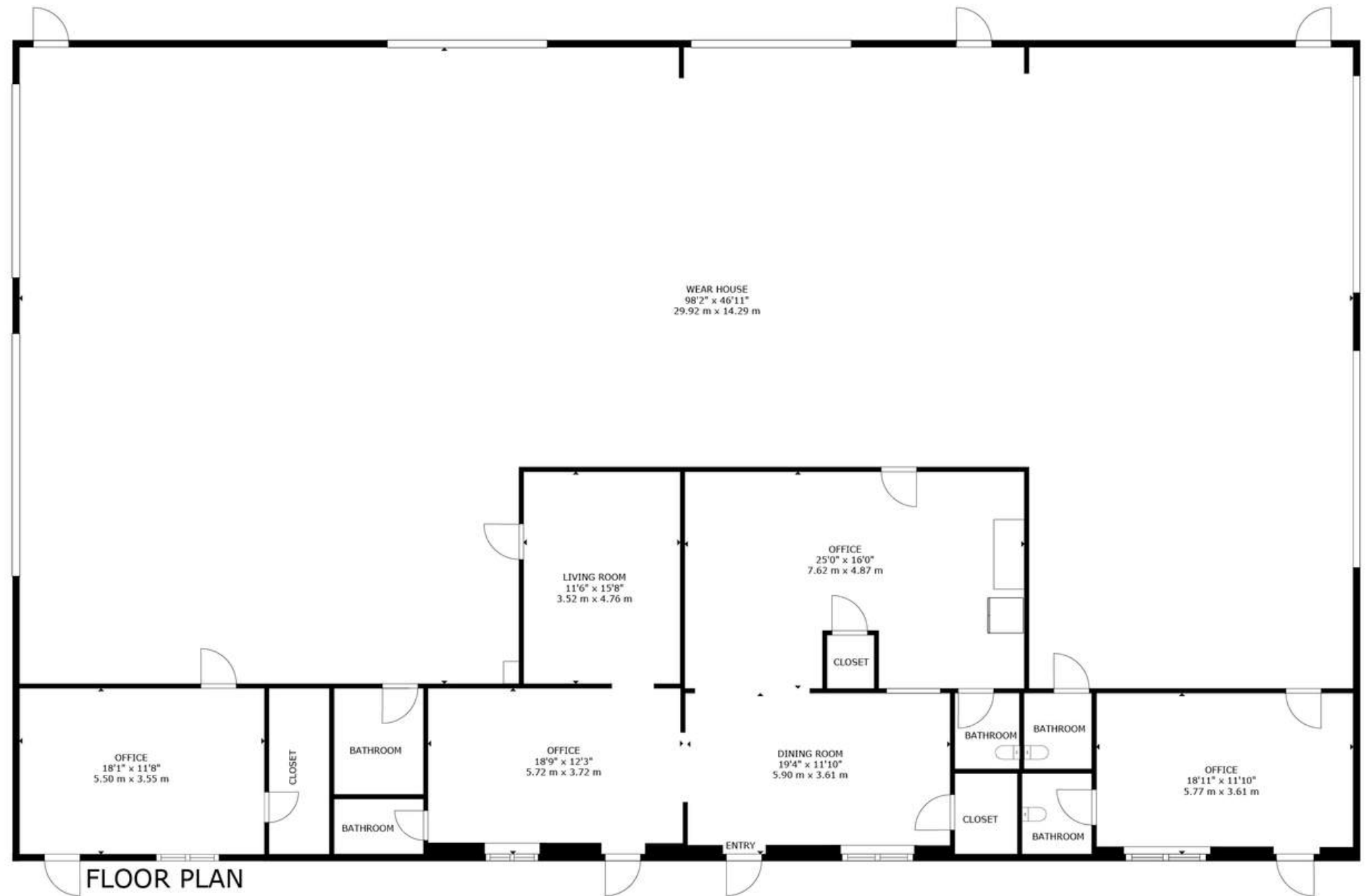
BAY DEVEL DOORS: 6

DOOR DIMENSIONS: 16' x 10' | 8' x 8'

SITE HIGHLIGHTS

- + READY TO LEASE FLEX UNIT COMPLETE WITH ONE ±2,000 SF OFFICE & ONE HALF BATH
- + TWO MILES FROM INTERSTATE 49
- + EASY ACCESS TO MAJOR HIGHWAYS AND NEARBY AMENITIES

VIRTUAL TOUR LINK



PALMER HAYS, SIOR MEMBER ASSOCIATE
INDUSTRIAL & LAND SPECIALIST
479.466.8499
PALMER@BENNETTCRE.COM





PALMER HAYS, SIOR MEMBER ASSOCIATE
INDUSTRIAL & LAND SPECIALIST
479.466.8499
PALMER@BENNETTCRE.COM



PALMER HAYS, SIOR MEMBER ASSOCIATE
INDUSTRIAL & LAND SPECIALIST
479.466.8499
PALMER@BENNETTCRE.COM

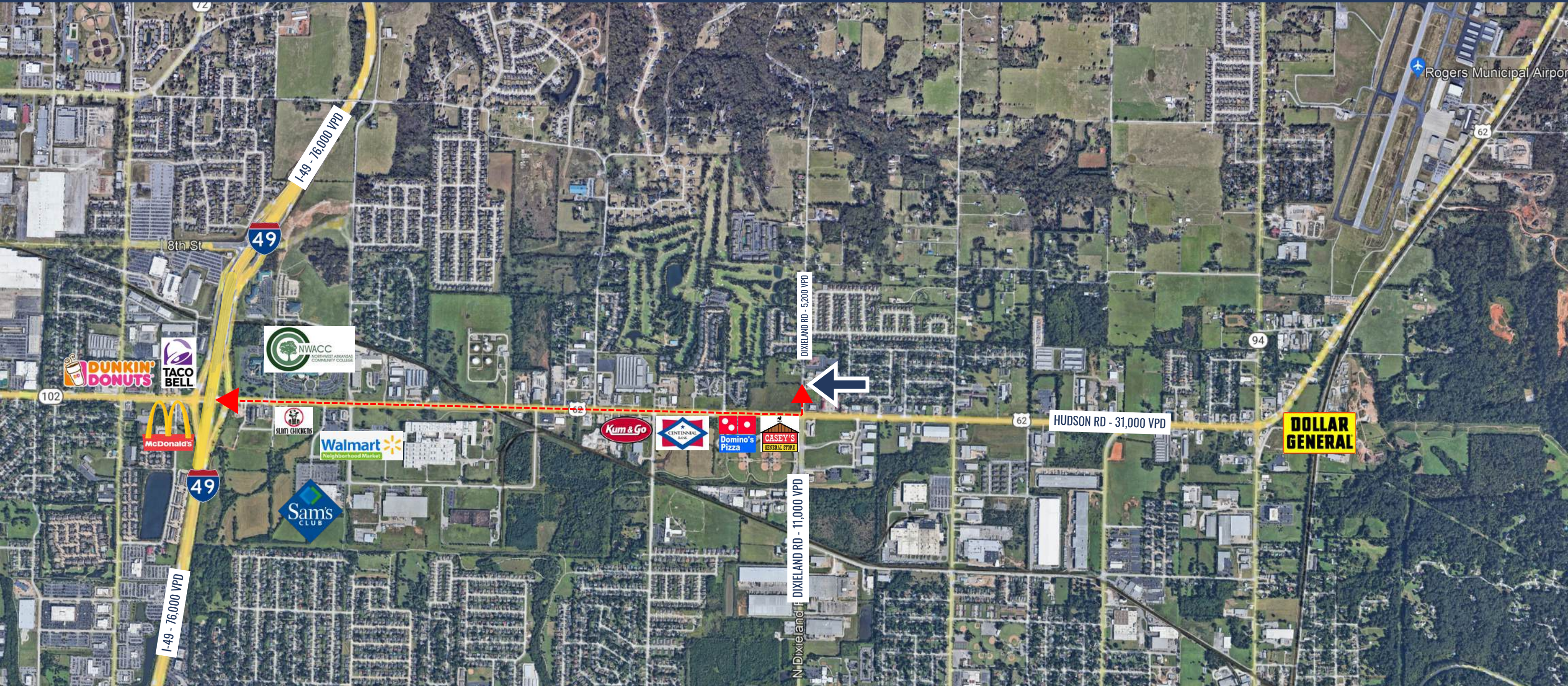
1724 W ACORN DR, ROGERS, AR 72758

AERIAL VIEW



PALMER HAYS, SIOR MEMBER ASSOCIATE
INDUSTRIAL & LAND SPECIALIST
479.466.8499
PALMER@BENNETTCRE.COM

5512 WEST WALSH LN, #201, ROGERS, AR 72758 | 479.278.4040 | BENNETTCRE.COM



INTERSTATE-49

2.2 MILES 6 MIN

WALMART HOME OFFICE

4.0 MILES 10 MIN

J.B. HUNT

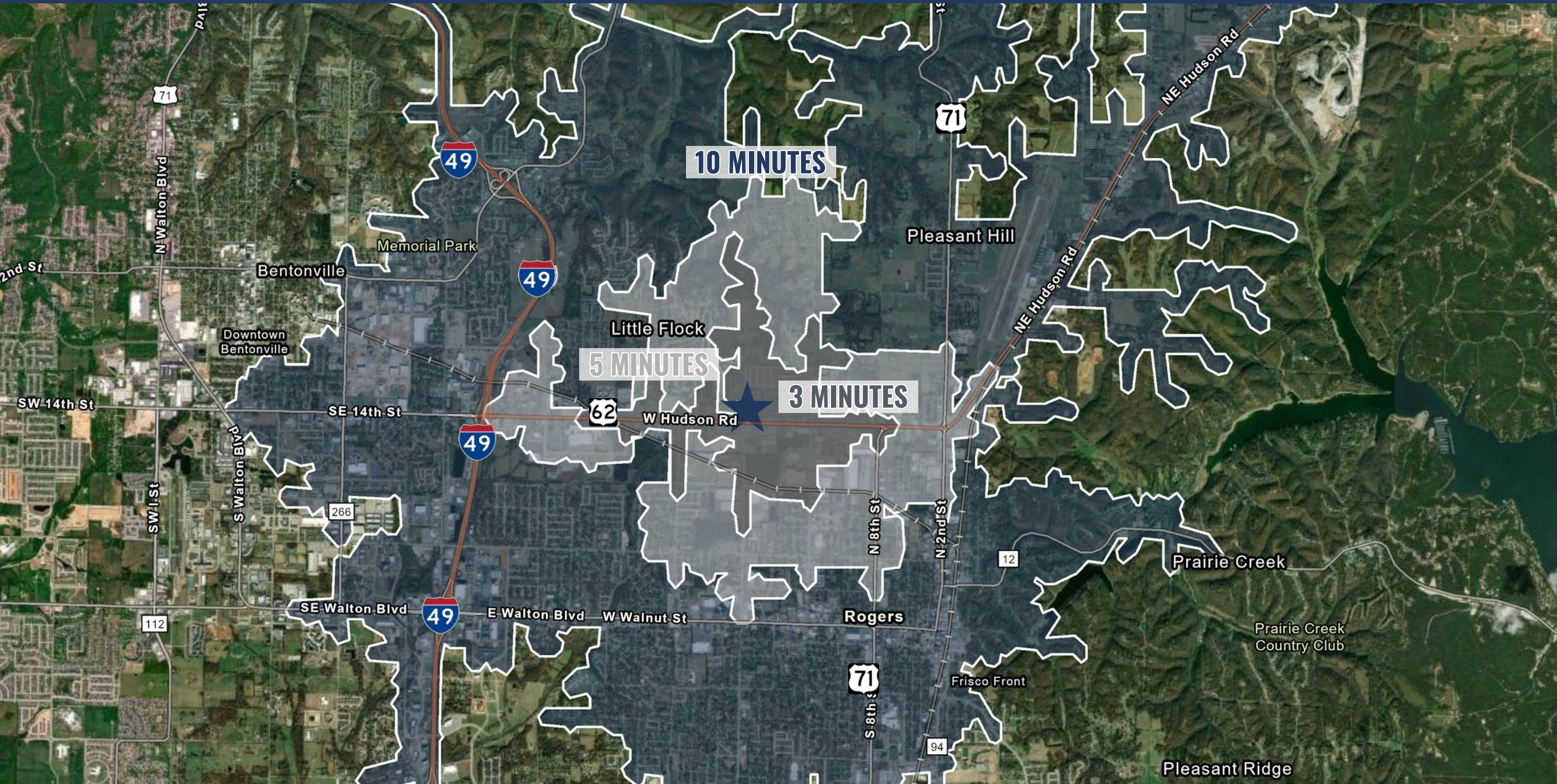
11.2 MILES 18 MIN

HWY 71B

1.8 MILES 5 MIN



PALMER HAYS, SIOR MEMBER ASSOCIATE
INDUSTRIAL & LAND SPECIALIST
479.466.8499
PALMER@BENNETTCRE.COM



PALMER HAYS, SIOR MEMBER ASSOCIATE
INDUSTRIAL & LAND SPECIALIST
479.466.8499
PALMER@BENNETTCRE.COM



BENNETT
COMMERCIAL REAL ESTATE

PALMER HAYS
INDUSTRIAL & LAND SPECIALIST
479.466.8499
PALMER@BENNETTCRE.COM

5512 WEST WALSH LN, #201, ROGERS, AR 72758 | 479.278.4040 | BENNETTCRE.COM