

REVISION	BY

LYNN & PARTNERS
 ARCHITECTURE/ENGINEERING/PLANNING
 2246 PERIMETER PARK DRIVE
 SUITE 16
 ATLANTA, GEORGIA 30341
 (404) 467-7837



OFFICE BUILDING FOR
PERSONAL SECRETARY
 WARSAW ROAD
 ROSWELL, GEORGIA 30075

RES	DRAWN
RES	CHECKED
RES	RES
	DATE
	8/23/94
	SCALE
	1" = 20'
	JOB NO.
	SHEET
	L-1

PLANT LIST

KEY	QUANTITY	BOTANICAL NAME	COMMON NAME	SIZE	ROOT
AR	7	ACER RUBRUM	RED MAPLE	3" CAL	B&B
QN	10	QUERCUS NIEPA	WATER OAK	3" CAL	B&B
LI	2	LAGERSTROEMIA INDICA	CRAPPE MYRTLE	10'-12" HT	B&B
IF	12	ILEX PASTERA	FOSTER HOLLY	6'-8" HT	B&B
IVN	100	ILEX VOMITORIA NANA	DWARF YAWPON HOLLY	3 GAL	CAN
JHP	78	JUNIPERUS HORIZONTALIS PLUMOSA	ANDORRA JUNIPER	3 GAL	CAN
H	400	HEMEROCALLIS	DAY LILY	1 GAL	CAN
HC	45	HYDRICIA CERIFERA	WAX MYRTLE	36" x 42"	B&B
ICC	16	ILEX CRENATA COMPACTA	BOX HOLLY	20" x 36"	B&B

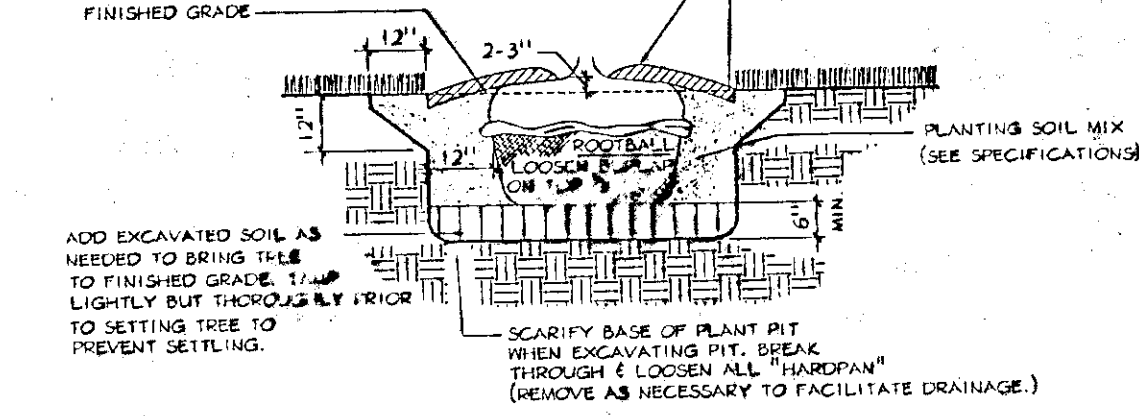
* NOTE: 300 WILL BE HYBRID BERMUDA CONTRACTOR TO BE RESPONSIBLE FOR QUANTITIES

GENERAL PLANTING NOTES:

- ALL PLANTS MUST BE HEALTHY, VIGOROUS MATERIAL, FREE OF PESTS & DISEASES.
- ALL PLANTS MUST BE CONTAINER-GROWN OR BALLED & BURLAPPED (B&B) AS INDICATED IN THE PLANT LIST.
- ALL TREES MUST BE STRAIGHT TRUNKED, FULL HEADED & MEET ALL REQUIREMENTS SPECIFIED.
- ALL PLANTS ARE SUBJECT TO THE APPROVAL OF THE LANDSCAPE ARCHITECT & THE OWNER BEFORE, DURING & AFTER INSTALLATION.
- ALL TREES MUST BE GUYED OR STAKED AS SHOWN IN THE DETAILS.
- ALL PLANTS & PLANTING AREAS MUST BE COMPLETELY MULCHED AS SPECIFIED.
- PRIOR TO CONSTRUCTION, THE LANDSCAPE CONTRACTOR SHALL BE RESPONSIBLE LOCATING ALL UNDERGROUND UTILITIES & SHALL AVOID DAMAGE TO ALL UTILITIES DURING THE COURSE OF THE WORK. THE LANDSCAPE CONTRACTOR IS RESPONSIBLE FOR REPAIRING ANY & ALL DAMAGE TO UTILITIES, STRUCTURES, SITE APPURTENANCES, ETC. WHICH OCCURS AS A RESULT OF THE LANDSCAPE CONSTRUCTION.
- THE LANDSCAPE CONTRACTOR IS RESPONSIBLE FOR VERIFYING ALL QUANTITIES SHOWN ON THESE PLANS BEFORE PRICING THE WORK.
- THE LANDSCAPE CONTRACTOR IS RESPONSIBLE FOR FULLY MAINTAINING ALL PLANTING (INCLUDING, BUT NOT LIMITED TO: WATERING, SPRAYING, MULCHING, FERTILIZING, ETC.) OF PLANTING AREAS & LAWNS UNTIL THE WORK IS ACCEPTED IN TOTAL BY THE LANDSCAPE ARCHITECT & THE OWNER.
- THE LANDSCAPE CONTRACTOR SHALL COMPLETELY GUARANTEE ALL PLANT MATERIAL FOR A PERIOD OF ONE (1) YEAR BEGINNING AT THE DATE OF FINAL ACCEPTANCE. THE LANDSCAPE CONTRACTOR SHALL PROMPTLY MAKE ALL REPLACEMENTS BEFORE OR AT THE END OF THE GUARANTEE PERIOD (AS PER DIRECTION OF THE OWNER).
- THE OWNER AGREES TO PERFORM ALL LANDSCAPE MAINTENANCE (INCLUDING WATERING) THROUGHOUT THE ONE YEAR GUARANTEE PERIOD UNLESS OTHERWISE DETERMINED.
- THE LANDSCAPE ARCHITECT WILL APPROVE THE STAKED LOCATION OF ALL PLANT MATERIAL PRIOR TO INSTALLATION.
- AFTER BEING DUG AT THE NURSERY SOURCE, ALL TREES IN LEAF SHALL BE ACCLIMATED FOR TWO (2) WEEKS UNDER A MIST SYSTEM PRIOR TO INSTALLATION.
- ANY PLANT MATERIAL WHICH DIES, TURNS BROWN OR DEFLORIATES (PRIOR TO TOTAL ACCEPTANCE OF THE WORK) SHALL BE PROMPTLY REMOVED FROM THE SITE & REPLACED WITH MATERIAL OF THE SAME SPECIES, QUANTITY, SIZE AND MEETING ALL PLANT LIST SPECIFICATIONS.
- STANDARDS SET FORTH IN "AMERICAN STANDARDS FOR NURSERY STOCK" REPRESENT GUIDELINE SPECIFICATIONS ONLY AND CONSTITUTE MINIMUM QUALITY REQUIREMENTS FOR PLANT MATERIAL.

GENERAL NOTES:

- SEE SPECIFICATIONS FOR DRAINAGE TEST REQUIREMENTS PRIOR TO PLANTING, SEC. 02480
- DO NOT ALLOW AIR POCKETS TO FORM WHEN BACKFILLING.
- IMMEDIATELY SOAK WITH WATER.
- DO NOT BREAK ROOTBALL.



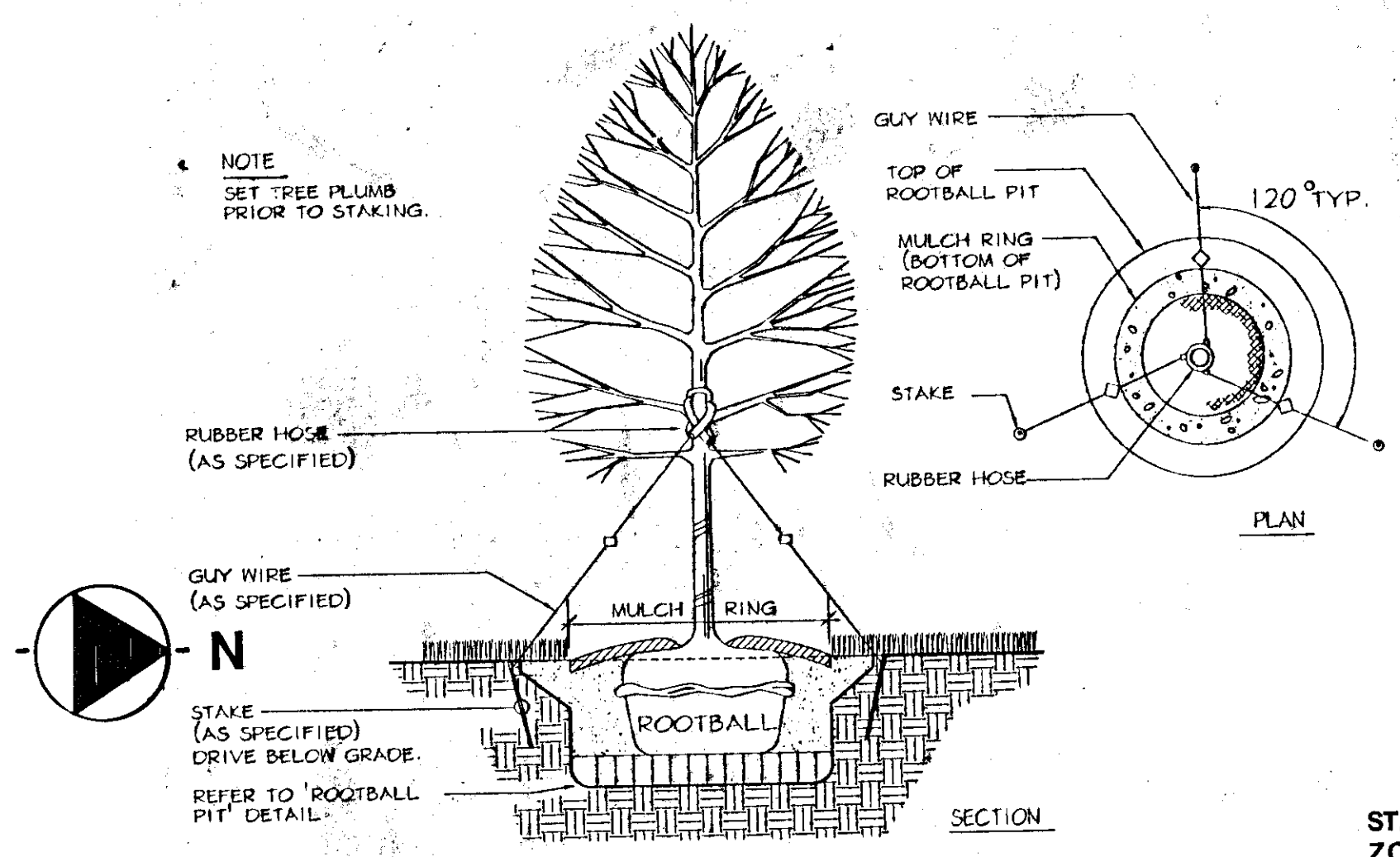
- PLANTING PROCEDURE
- EXCAVATE ROOTBALL PIT.
 - ADD EXCAVATED SOIL & TAMP. SET TREE SUCH THAT TOP OF ROOTBALL IS 3" HIGHER THAN FINISHED GRADE.
 - BACKFILL W/ SOIL MIX & WATER 1/4".
 - COMPLETE BACKFILLING, CONSTRUCT TRENCH EDGE & ADD SPECIFIED MULCH.
 - STAKE & GUY SECURELY.

TYPICAL TREE ROOTBALL PIT

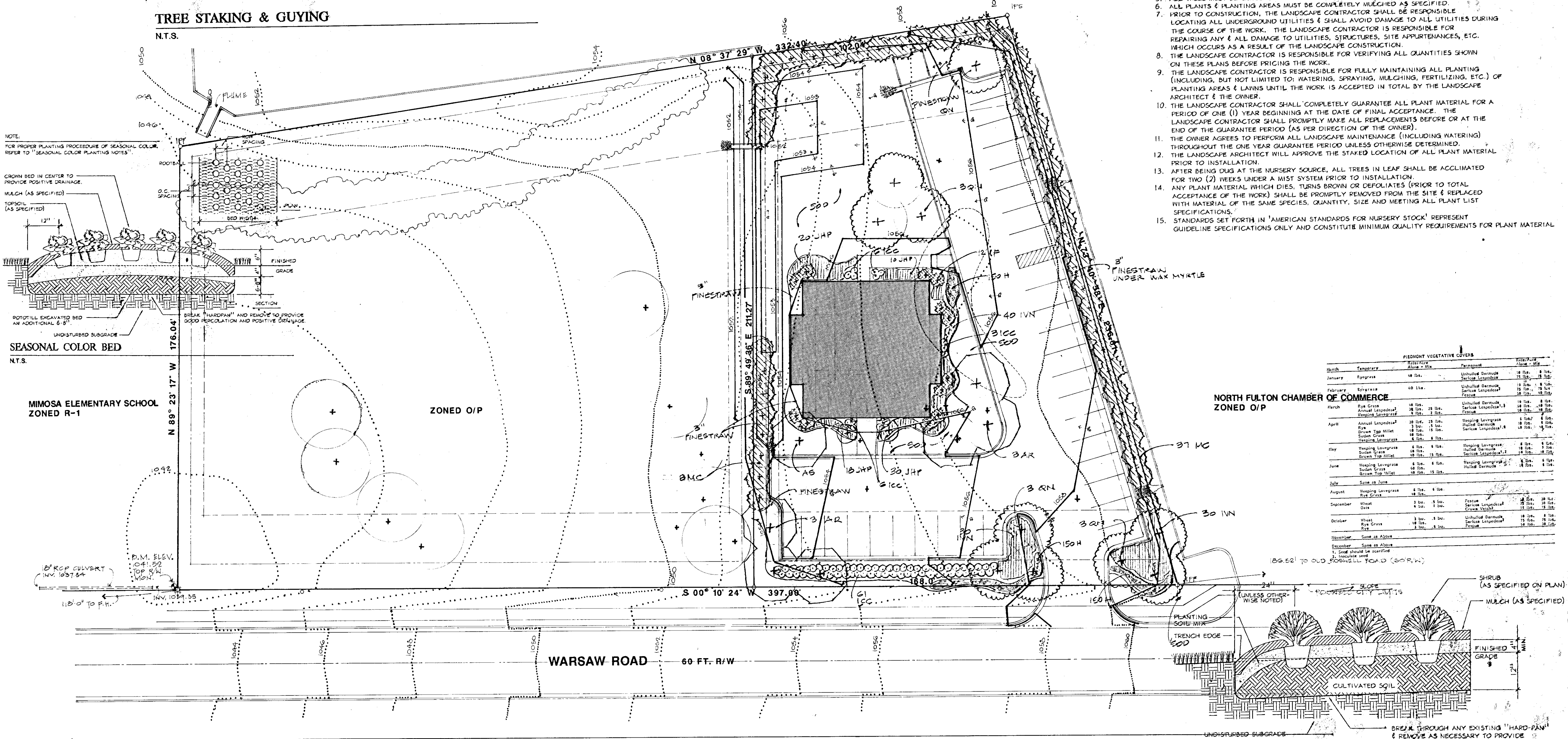
N.T.S.

TREE STAKING & GUYING

N.T.S.

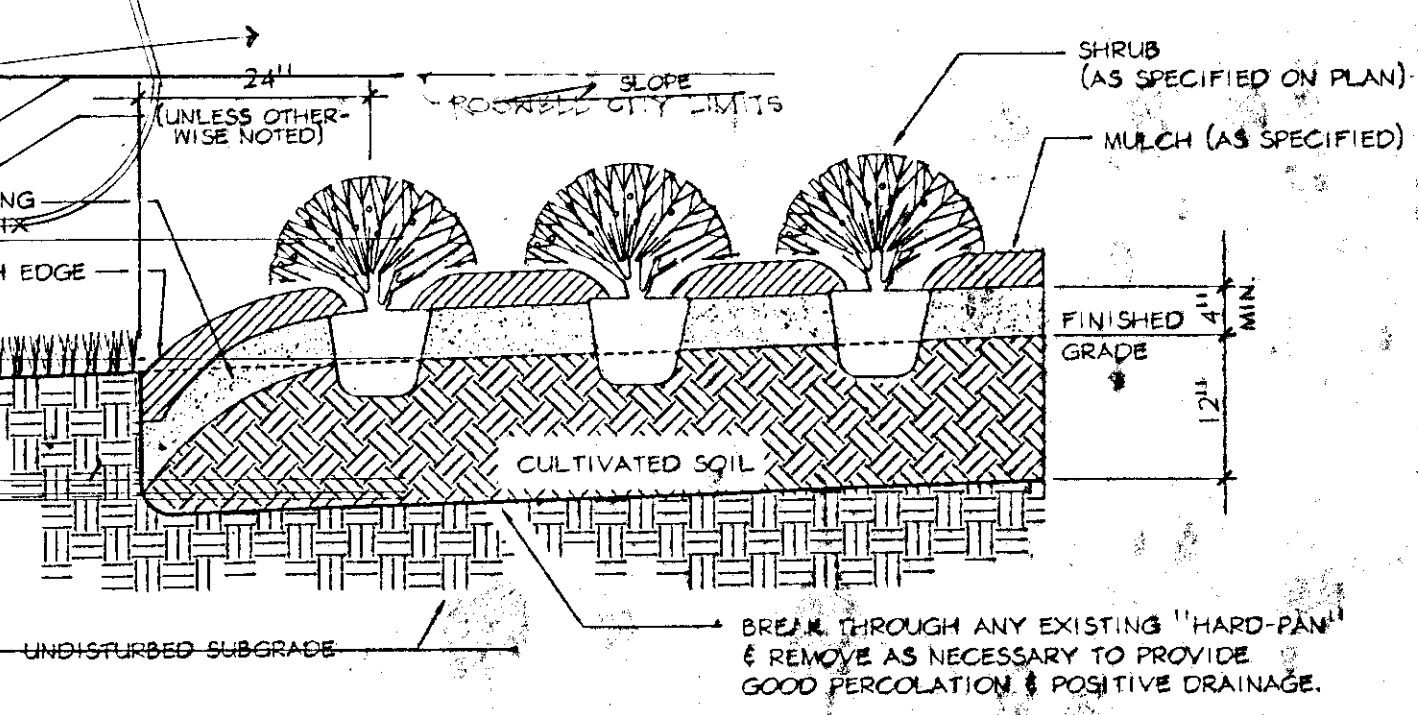


ST. DAVID'S EPISCOPAL CHURCH
 ZONED R-1



PIEDMONT VEGETATIVE COVERS

Month	Temperature Above 50°	Perennial	Annual	Perennial	Annual
January	40-50°	Unhulled Bermuda	St. Augustine	St. Augustine	St. Augustine
February	50-60°	Unhulled Bermuda	St. Augustine	St. Augustine	St. Augustine
March	60-70°	Unhulled Bermuda	St. Augustine	St. Augustine	St. Augustine
April	70-80°	Unhulled Bermuda	St. Augustine	St. Augustine	St. Augustine
May	80-90°	Unhulled Bermuda	St. Augustine	St. Augustine	St. Augustine
June	90-100°	Unhulled Bermuda	St. Augustine	St. Augustine	St. Augustine
July	100-110°	Unhulled Bermuda	St. Augustine	St. Augustine	St. Augustine
August	110-120°	Unhulled Bermuda	St. Augustine	St. Augustine	St. Augustine
September	120-130°	Unhulled Bermuda	St. Augustine	St. Augustine	St. Augustine
October	130-140°	Unhulled Bermuda	St. Augustine	St. Augustine	St. Augustine
November	140-150°	Unhulled Bermuda	St. Augustine	St. Augustine	St. Augustine
December	150-160°	Unhulled Bermuda	St. Augustine	St. Augustine	St. Augustine



SHRUB PLANTING

N.T.S.

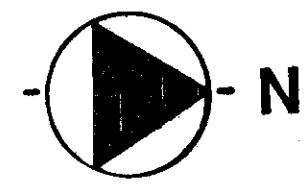
- PLANTING PROCEDURE
- LAY OUT BED AND OUTLINE WITH TRENCH EDGE. PLACE SOIL FROM EDGE WITHIN BED.
 - ROTOTILL BED TO 12" DEPTH. SPREAD 4" MIN. LAYER OF PLANTING SOIL MIX OVER BED. ROTOTILL SOIL MIX INTO TOP OF BED. INSTALL PLANTS & MULCH. WATER THOROUGHLY.

LANDSCAPE SITE PLAN

SCALE 1" = 20'

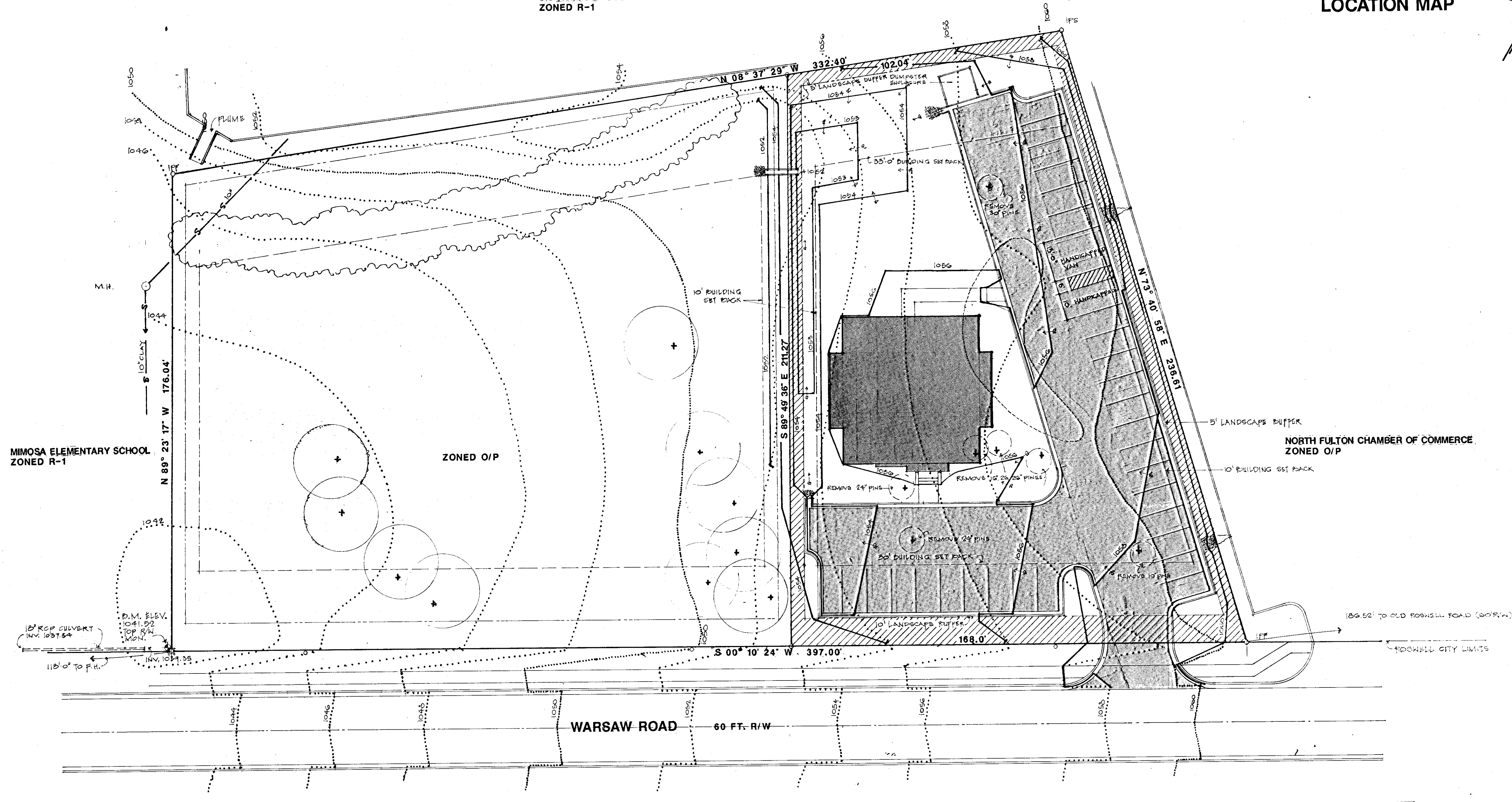
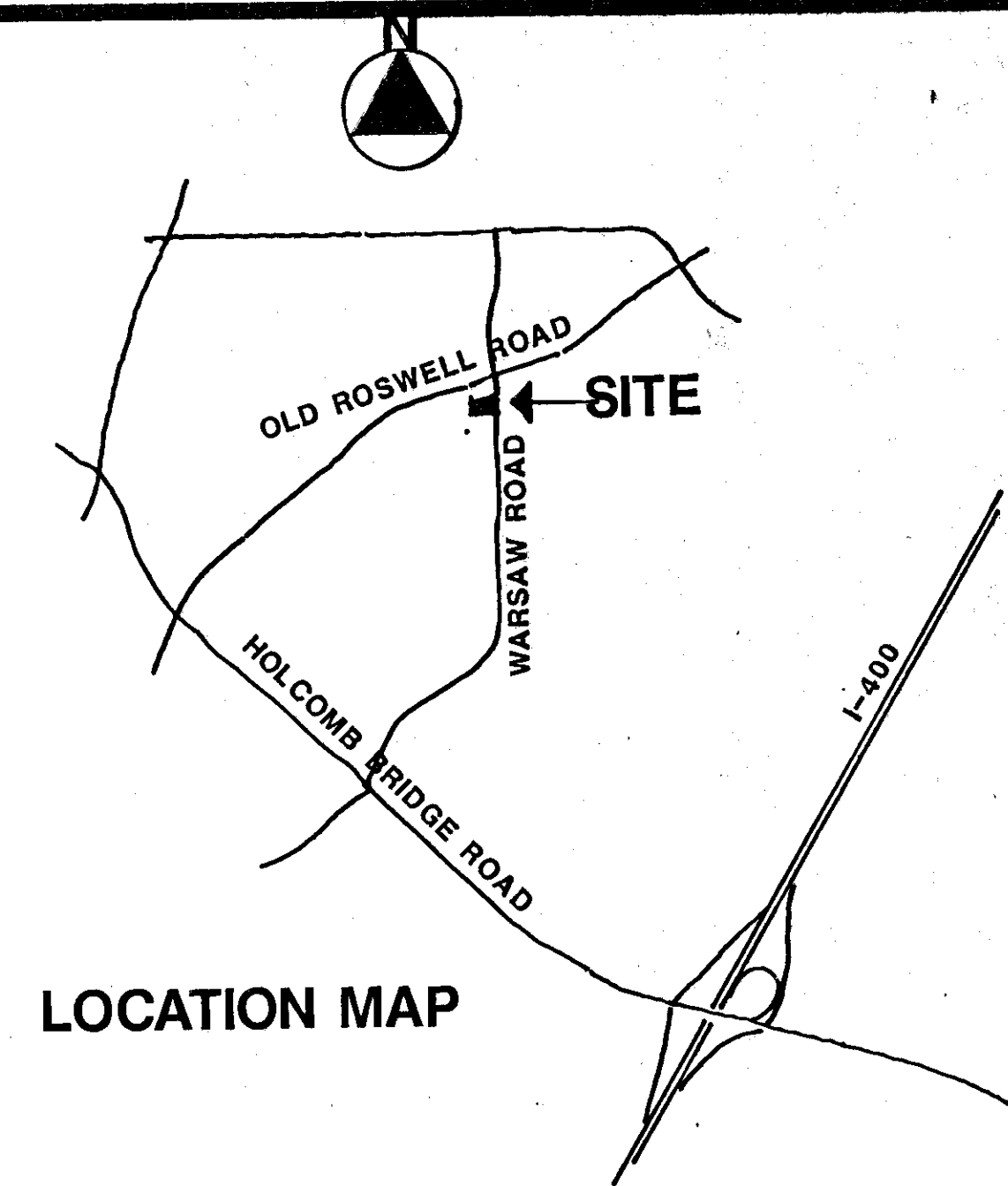
NOTE: INFORMATION SHOWN TAKEN FROM SURVEY BY D.W. LYNAH, SURVEYOR, DATED 8/1/94

LOT INFORMATION
 L.L. 503, 1ST DISTRICT, 1249 SECT. ON,
 FULTON COUNTY, GEORGIA
 BUILDING SITE AREA 29,710 SQ. FT.



ST. DAVID'S EPISCOPAL CHURCH
ZONED R-1

LOCATION MAP



MIMOSA ELEMENTARY SCHOOL
ZONED R-1

ZONED O/P

NORTH FULTON CHAMBER OF COMMERCE
ZONED O/P

WARSAW ROAD 60 FT. R/W

TREE PROTECTION PLAN

SCALE 0 10 20 30

NOTE:
INFORMATION SHOWN TAKEN FROM SURVEY BY
D.W. LYNAH, SURVEYOR, DATED 8/1/94

INDICATES TREE PROTECTION AREA.

LOT INFORMATION
L.L. 823, 1ST DISTRICT, 2ND SECTION,
FULTON COUNTY, GEORGIA
BUILDING SITE AREA 23,110 SQ. FT.

PARKING REQUIREMENTS
BUILDING AREA = 6200[±] = 31 CARS REQUIRED
PARKING SHOWN = 30 SPACES & 1 HANDICAPPED = 31 SPACES

NOTE:
THIS PROPERTY DOES NOT LIE IN THE 50 OR 100 YEAR FLOOD PLAIN.
DUMPSTER TO BE ENCLOSED ON 3 SIDES WITH 6' HIGH
MASONRY WALL TO MATCH OFFICE WALL.

REVISIONS	BY

LYNN & PARTNERS
ARCHITECTURE/ENGINEERING/PLANNING
2216 PERIMETER PARK DRIVE
SUITE 46
ATLANTA, GEORGIA 30341
(404) 457-7937

OFFICE BUILDING FOR
PERSONAL SECRETARY
WARSAW ROAD
ROSWELL, GEORGIA 30075

DRAWN
CHECKED
DATE 8/23/94
SCALE 1"=20'
JOB NO.
SHEET
L-2
OF 2 SHEETS