

# 6315 N Tryon St

CHARLOTTE, NC 28213



Land

FOR  
Sale

SIZE  
2.686 AC

PRICE  
Call for Pricing



## Overview

2.686 acres of vacant land located on N. Tryon Street

Zoned TOD-TR

Within walking distance of the Tom Hunter Light Rail Station

Less than a 10 minute drive to UNCC

Close proximity to I-85, University City, and NoDa

## ±2.686 Acres for Sale off North Tryon Street



Clark Alcorn  
Broker

(704) 367 5005  
calcorn@mpvre.com

Bailey W. Patrick  
Managing Partner

(704) 248 2102  
bpatrick@mpvre.com

2400 South Boulevard | Suite 300  
Charlotte, NC 28203

[mpvre.com](http://mpvre.com)

# 6315 N Tryon St

CHARLOTTE, NC 28213

## Property Overview

### Demographics

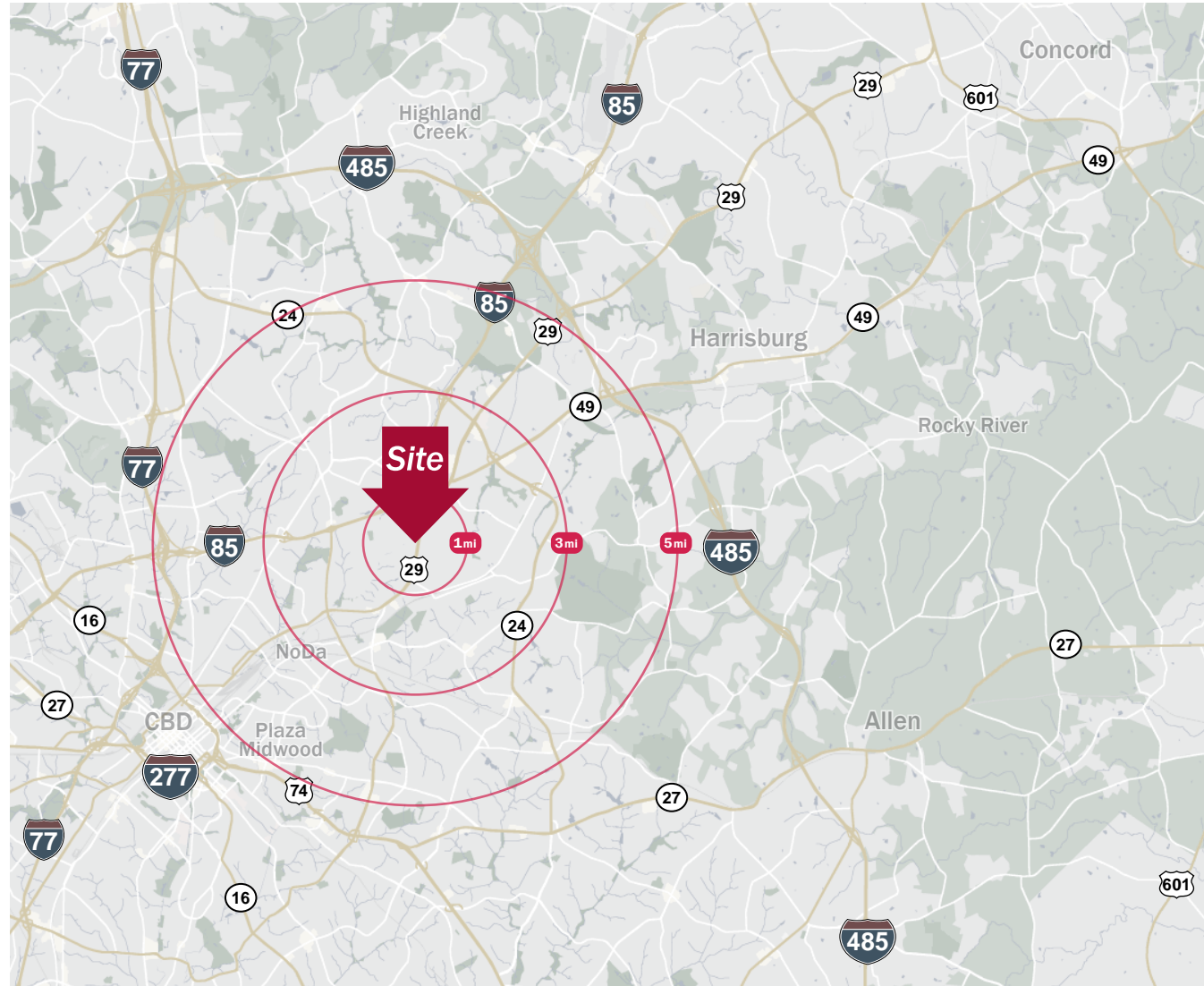
Source: Esri® 2023

	1 mile	3 mile	5 mile
Population	10,753	72,321	204,026
Growth Rate	3.89%	1.49%	1.56%
Avg. HH Income	\$55,921	\$72,983	\$83,728

### Traffic Count

Source: NCDOT

	AADT
N Tryon St	26,000 (2022)



Clark Alcorn  
Broker

(704) 367 5005  
calcorn@mpvre.com

Bailey W. Patrick  
Managing Partner

(704) 248 2102  
bpatrick@mpvre.com

2400 South Boulevard | Suite 300  
Charlotte, NC 28203

[mpvre.com](http://mpvre.com)





This GIS data is deemed reliable but provided "as is" without warranty of any representation of accuracy, timeliness, reliability or completeness. This map document does not represent a legal survey of the land and is for graphical purposes only. Use of this data for any purpose should be of acknowledgment of the limitations of the data, including the fact that the data is dynamic and is in a constant state of maintenance, correction, and update.



Clark Alcorn  
Broker

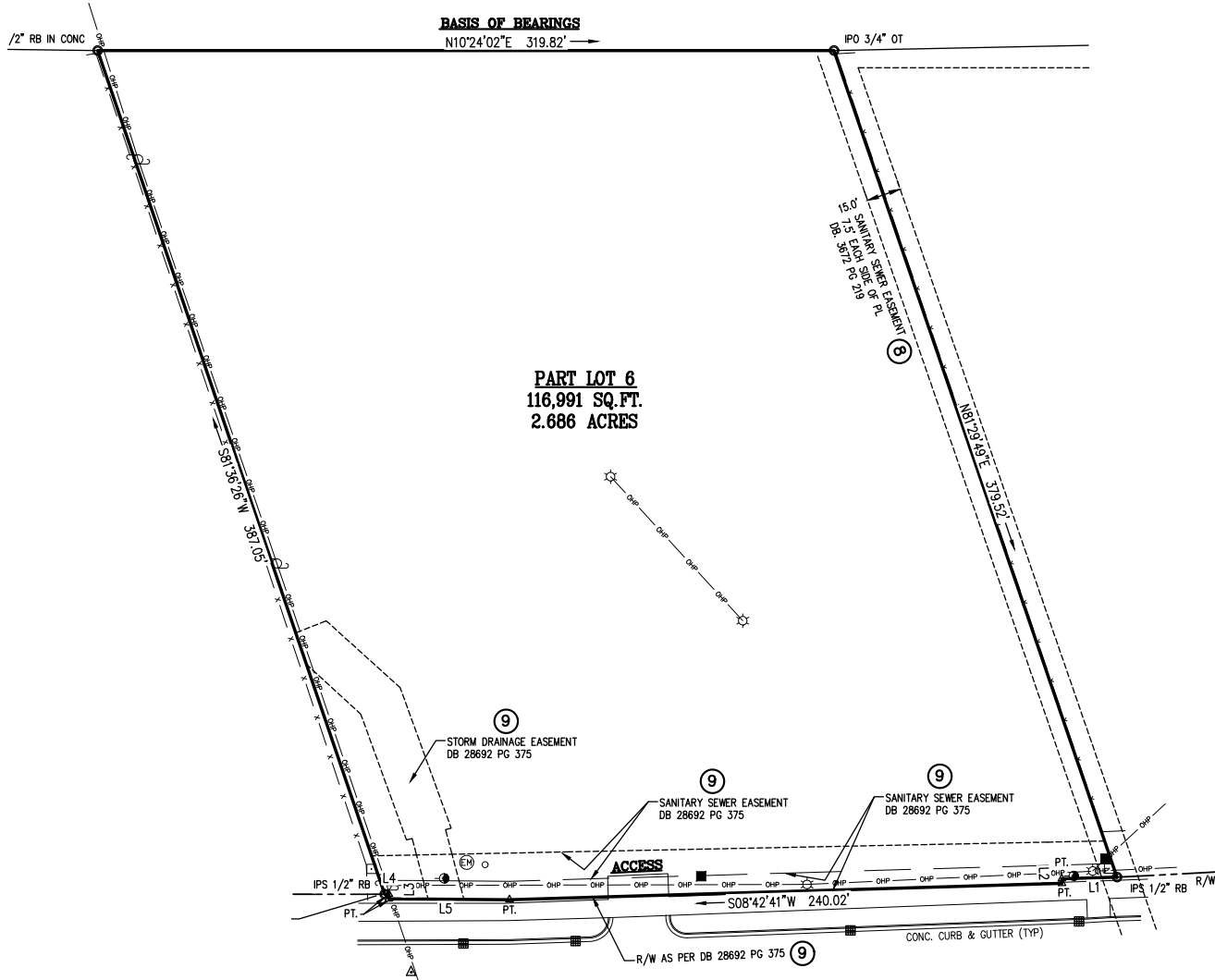
(704) 367 5005  
calcorn@mpvre.com

Bailey W. Patrick  
Managing Partner

(704) 248 2102  
bpatrick@mpvre.com

2400 South Boulevard | Suite 300  
Charlotte, NC 28203

[mpvre.com](http://mpvre.com)



Clark Alcorn  
Broker  
(704) 367 5005  
calcorn@mpvre.com

Bailey W. Patrick  
Managing Partner  
(704) 248 2102  
bpatrick@mpvre.com

2400 South Boulevard | Suite 300  
Charlotte, NC 28203

mpvre.com

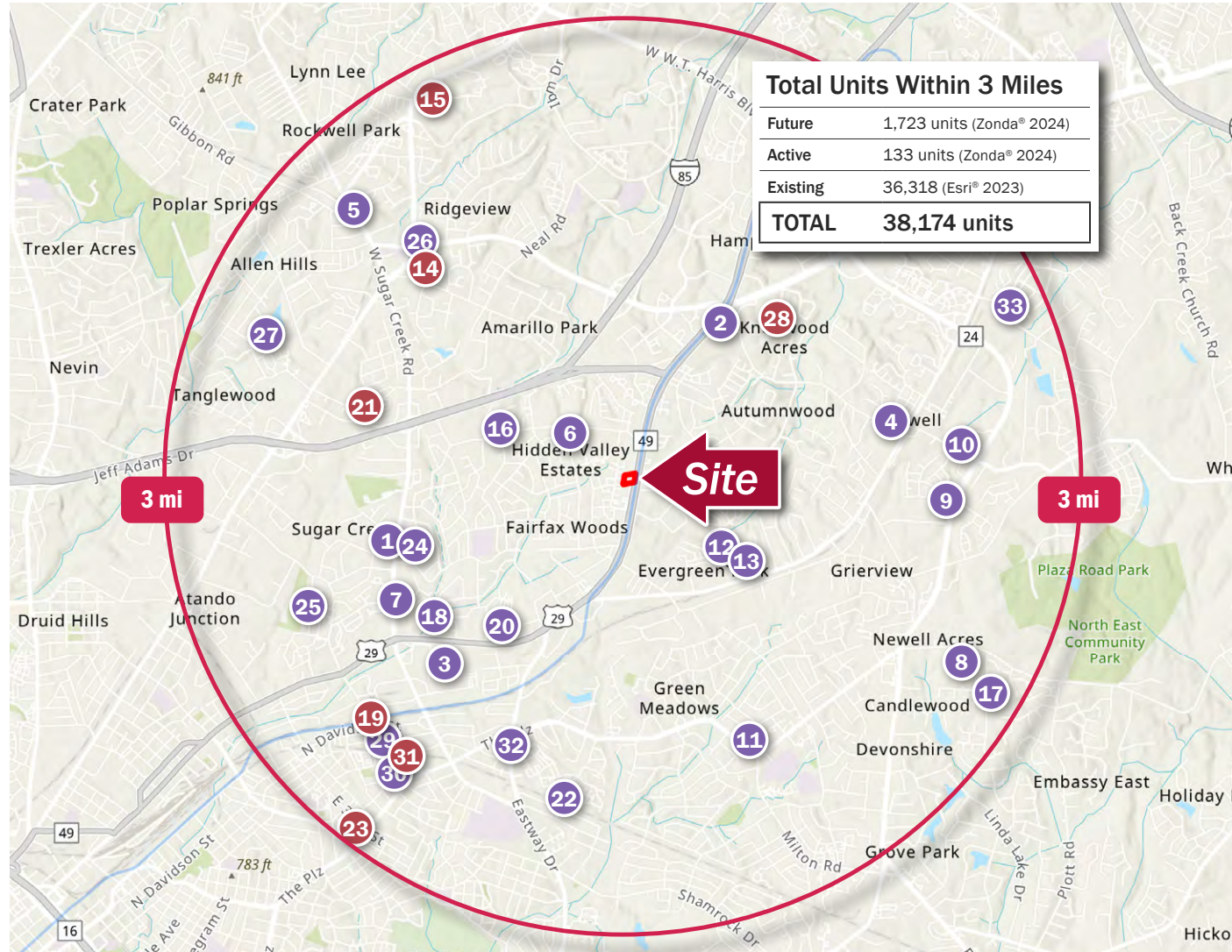






Number	Subdivision	Units
1	W Sugar Creek TH	15
2	Twitter Ln TH	25
3	Trailhead TH	109
4	Towns At W Rocky River	35
5	Towns at Bisaner (P)	75
6	Tom Hunter Site (P)	10
7	Sugar Creek TH (Red Cedar) (P)	40
8	Stonesummit TH	249
9	Shorthorn Site TH (P)	70
10	Rocky River Towns (P)	45
11	Plainfield Dr Towns (P)	30
12	Newell Assemblage/TH (P)	330
13	Newell Assemblage/SF (P)	310
14	Mineral Springs TH	75
15	Mallard Creek Towns	116
16	Langston TH (P)	12
17	James Rd TH (P)	92
18	Hershey St TH	20
19	Galleries at NoDa CO	39
20	Fitzgerald Ave TH	19
21	Fifteen 15 Cannon TH	312
22	Faith Soldiers Towns (P)	53
23	E 34th St TH	21
24	Duets on Gondola (P)	14
25	Drury Dr TH (P)	17
26	Cosmoville II (P)	16
27	Citadel Place TH (P)	50
28	Brixton TH	80
29	Anderson TH (P)	47
30	Anderson St TH (Northway) (P)	20
31	Anderson Square TH	122
32	623 Eastway Dr TH (P)	10
33	1833 McLean (P)	10

Key: ■ Active/Developing ■ Future/Planned



**Clark Alcorn**  
Broker  
(704) 367 5005  
calcorn@mpvre.com

**Bailey W. Patrick**  
Managing Partner  
(704) 248 2102  
bpatrick@mpvre.com

2400 South Boulevard | Suite 300  
Charlotte, NC 28203

mpvre.com



Medical | Industrial | Retail | Land | Investment | Office

contact

**Clark Alcorn**  
*Broker*

(704) 367 5005  
calcorn@mpvre.com

**Bailey W. Patrick**  
*Managing Partner*

(704) 248 2102  
bpatrick@mpvre.com

2400 South Boulevard | Suite 300  
Charlotte, NC 28203

[mpvre.com](http://mpvre.com)