

57 BOND

noho | nyc

Southwest Corner of Bowery & Bond St



SPACE DESCRIPTION

GROUND FLOOR: 2,510 SF

BASEMENT: 1,604 SF

CEILING HEIGHTS: 14'

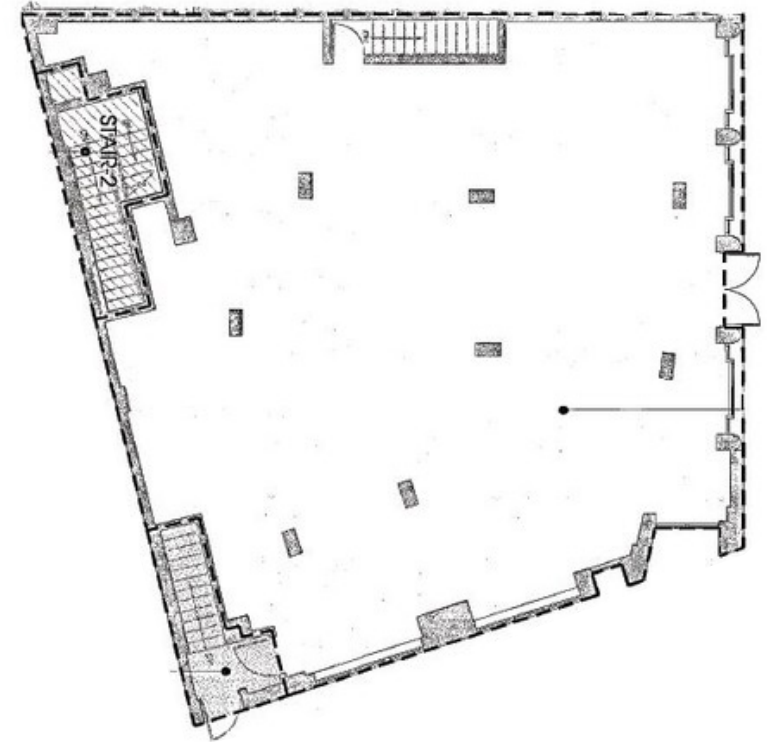
POSSESSION: IMMEDIATE

ASKING RENT: UPON REQUEST

SPACE NOTES

- 70' of wrap around corner frontage
- Glass Storefront
- Seeking Dry Uses: Apparel, Salon, Gallery, Showroom, etc.

GROUND FLOOR



BASEMENT



existing condition

existing condition





GEMMA



ZERO BOND

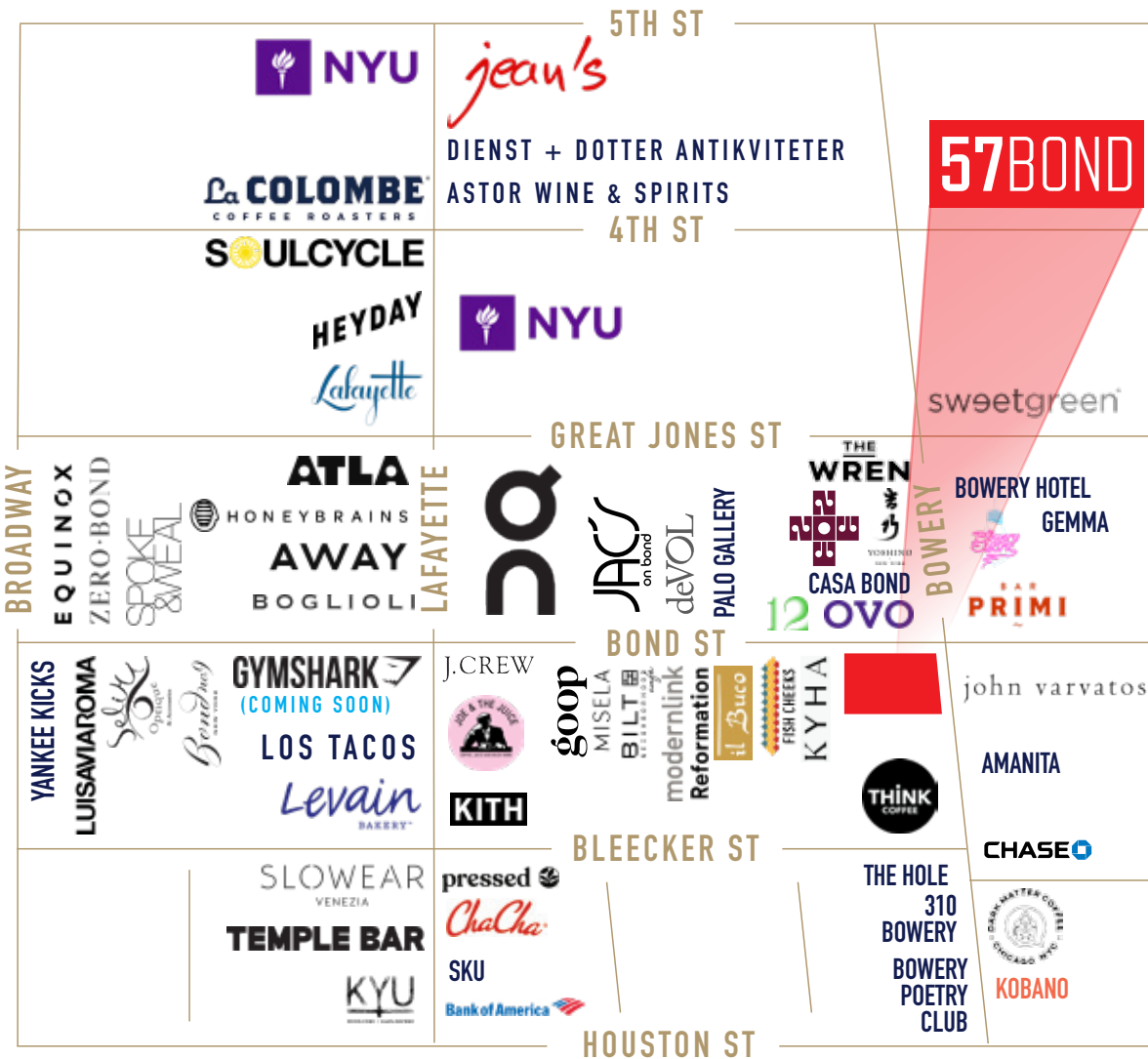
NEIGHBORS

RETAIL

Think Coffee, Octobers Very Own, Bar Primi, Reformation, Boglioli, On, deVOL, Fish Cheeks, Joe & The Juice, J. Crew, Chase, SweetGreen

TRANSPORTATION

B D F M 6



PAUL POPKIN

Senior Managing Director

212.776.1213

ppopkin@lee-associates.com

MORRIS DWECK

Managing Director

212.776.1246

mdweck@lee-associates.com

ANNIE SQUIER

Director

646.723.4719

asquier@lee-associates.com

All information supplied is from sources deemed reliable and is furnished subject to errors, omissions, modifications, removal of the listing for sale or lease, and to any listing conditions, including the rates and manner of payment of commissions for particular offerings imposed by principals or agreed by this Company, the terms of which are available to principals or duly licensed brokers. Any square footage dimensions set forth are approximate.

LEE & ASSOCIATES