



2 GRADED LOTS: UP TO 1.67 AC \pm

2200 & 2204 JACK LANE | BEL AIR, MARYLAND 21015

FOR
SALE



MACKENZIE
COMMERCIAL REAL ESTATE SERVICES, LLC

PROPERTY OVERVIEW

HIGHLIGHTS:

- Up to 1.67 acres \pm available for sale
- Graded lots with all public utilities to site
- Zoned CI (Commercial/Industrial), allowing a wide variety of uses by right, including automotive, industrial, office, retail, medical, and more
- Excellent visibility to Route 543 (8,000+ cars/day) and easy access from Route 1 (24,000+ cars/day)
- Surrounding retailers include Redner's Fresh Market, Royal Farms, Taco Bell, Dunkin', Wawa and Burger King

AVAILABLE:

0.61 ACRES \pm (2200 JACK LN)

1.06 ACRES \pm (2204 JACK LN)

ZONING:

CI (COMMERCIAL/INDUSTRIAL)

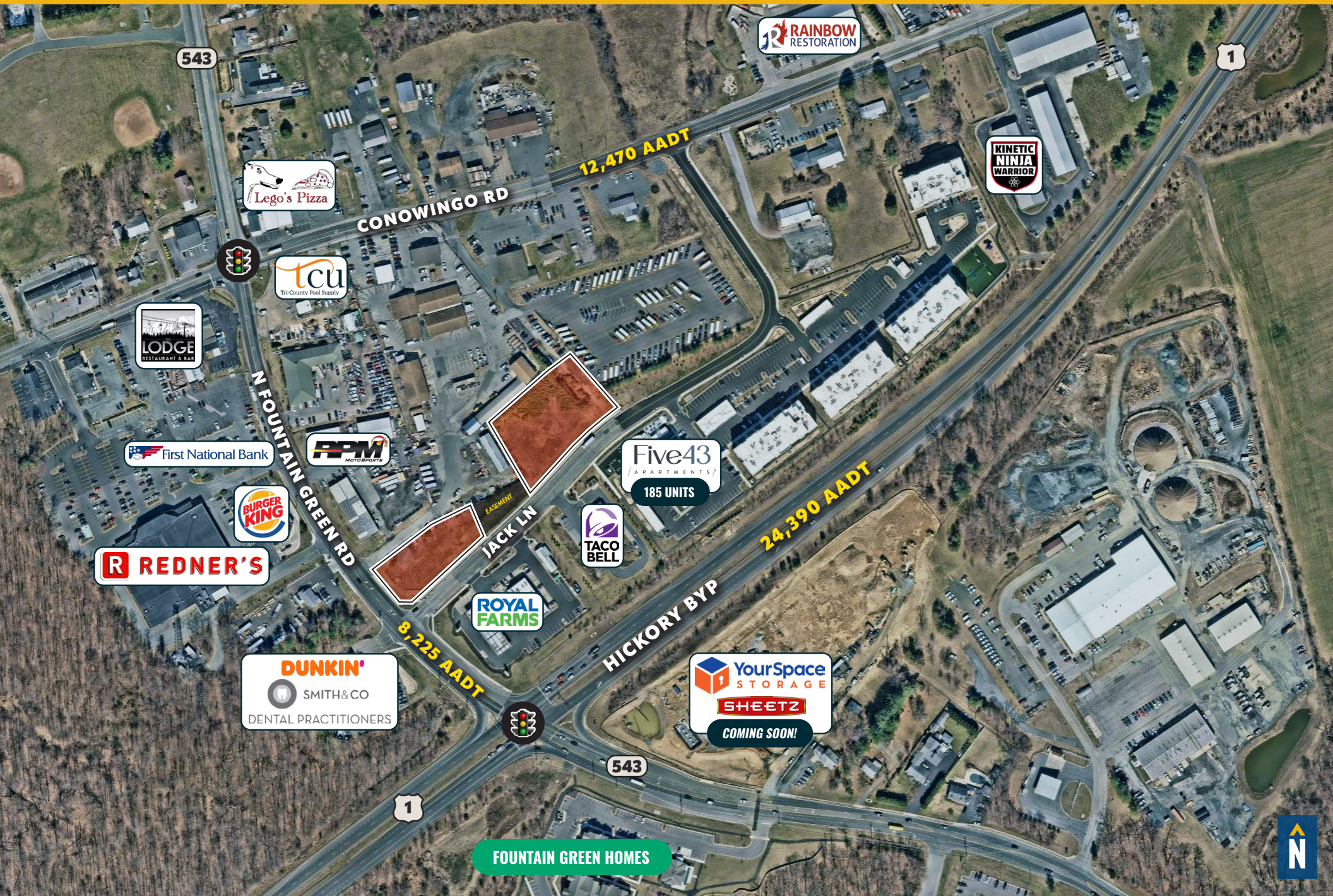
SALE PRICE:

\$395,000 (2200 JACK LN)

\$575,000 (2204 JACK LN)



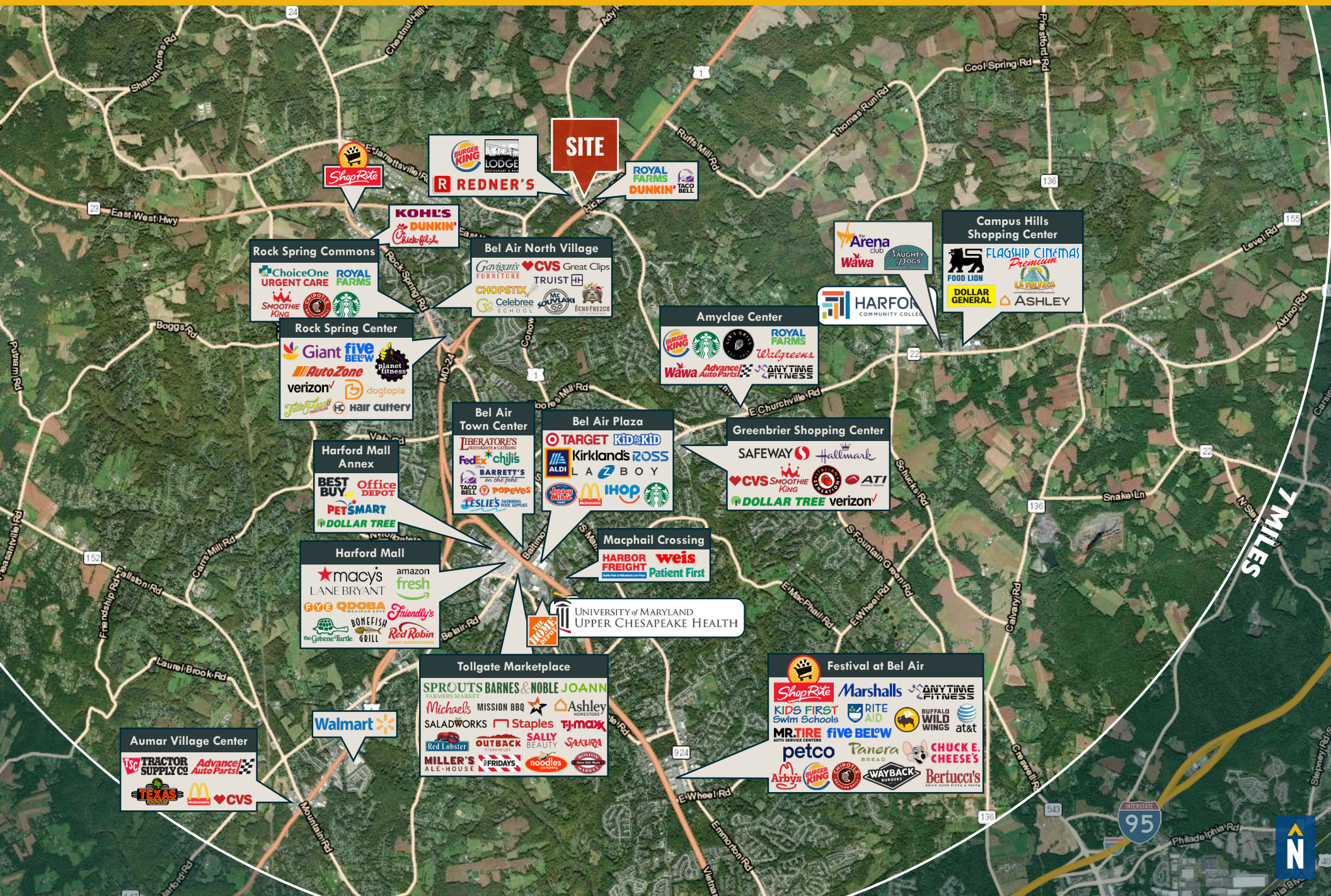
AERIAL OVERVIEW

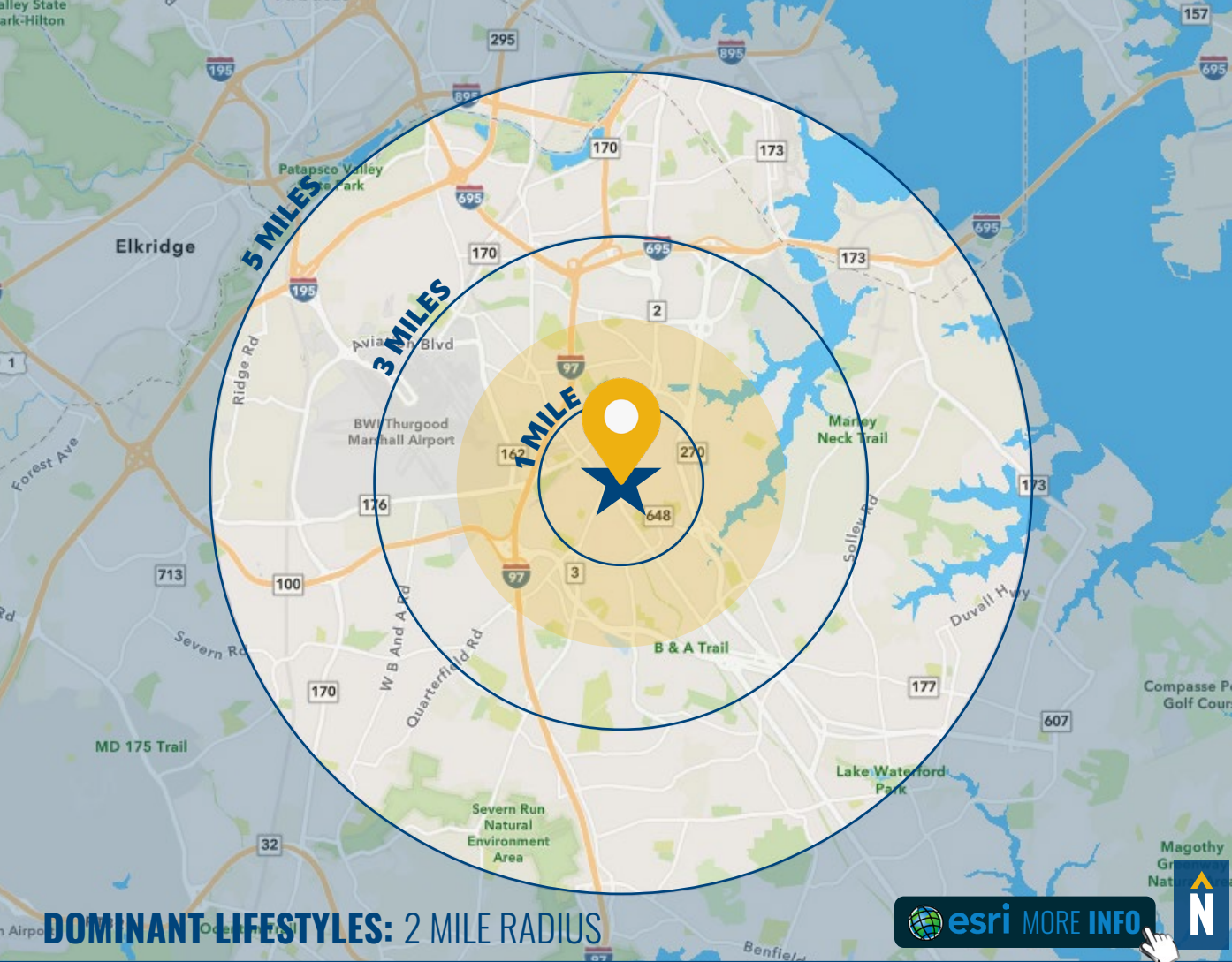


FOREST HILL TRADE AREA



REGIONAL TRADE AREA





DEMOGRAPHICS

2024

RADIUS:

1 MILE

3 MILES

5 MILES

RESIDENTIAL POPULATION



XXX

XXX

XXX

DAYTIME POPULATION



XXX

XXX

XXX

AVERAGE HOUSEHOLD INCOME



XXX

XXX

XXX

NUMBER OF HOUSEHOLDS



XXX

XXX

XXX

MEDIAN AGE

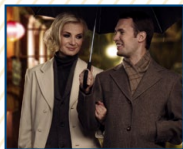


XXX

XXX

XXX

24%
URBAN CHIC



These are professionals that live a sophisticated, exclusive lifestyle. They are busy, well-connected consumers—avid readers and moviegoers, environmentally active, and financially stable.

Median Age: **43.4**
Median Household Income: **\$109,400**

16%
ENTERPRISING
PROFESSIONALS



These residents are well educated and climbing the ladder in STEM (science, technology, engineering and mathematics) occupations. This young market makes over 1^{1/2} times more income than the US median.

Median Age: **35.3**
Median Household Income: **\$86,600**

14%
TOP TIER



The residents of the wealthiest Tapestry market, Top Tier, earn more than 3x the US household income. They frequent upscale salons, spas and fitness centers and shop at high-end retailers for their personal effects.

Median Age: **47.3**
Median Household Income: **\$173,200**

FULL DEMOS REPORT

FOR MORE INFO **CONTACT:**



TOM FIDLER

EXECUTIVE VICE PRESIDENT & PRINCIPAL

410.494.4860

TFIDLER@mackenziecommercial.com



LAURA WILLIAMS

VICE PRESIDENT

410.494.4864

LWILLIAMS@mackenziecommercial.com



VISIT **PROPERTY PAGE** FOR MORE INFORMATION.



MACKENZIE

COMMERCIAL REAL ESTATE SERVICES, LLC

410-821-8585

**2328 W. Joppa Road, Suite 200
Lutherville, MD 21093**

OFFICES IN:

ANNAPOLIS, MD

BALTIMORE, MD

BEL AIR, MD

COLUMBIA, MD

LUTHERVILLE, MD

CHARLOTTESVILLE, VA

www.MACKENZIECOMMERCIAL.com

No warranty or representation, expressed or implied, is made as to the accuracy of the information contained herein, and same is submitted subject to errors, omissions, change of price, rental or other conditions, withdrawal without notice, and to any specific listing conditions imposed by our principals.