

# Palatka Retail Development

Palatka, FL

**GROUND LEASE OR BTS**



**Parcel # (10-10-26-0000-0220-0011) Palatka FL 32177**

## Property Highlights

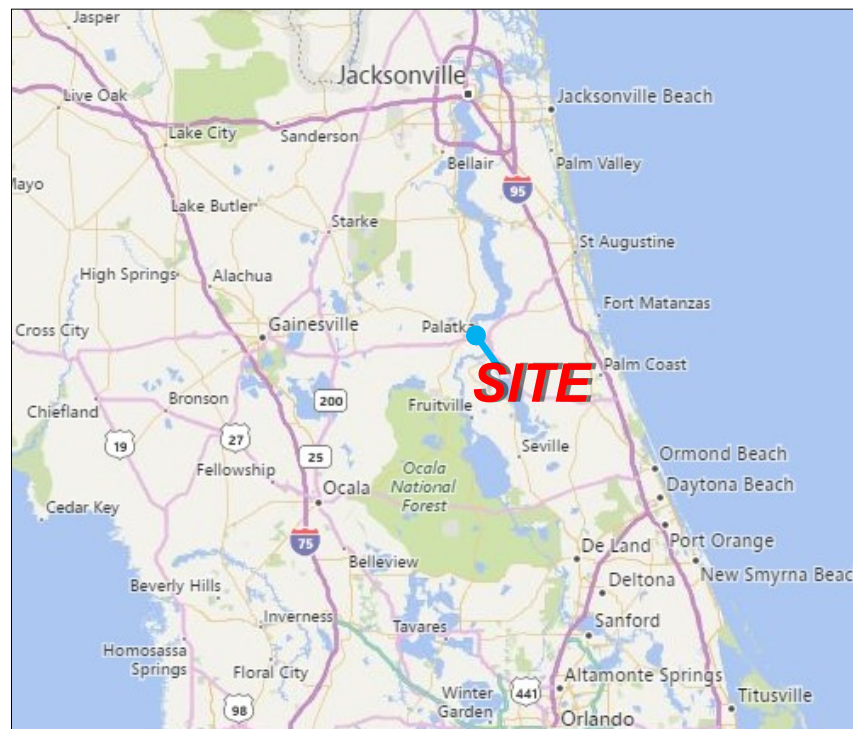
- Located roughly one hour south of Jacksonville, and 45 minutes west of St Augustine
- Outparcel to Walmart
- Located on fast growing SR-19 at a signalized intersection
- Nearby National Tenants include Walmart, AT&T, GameStop, Chili's, Winn Dixie, Pizza Hut, & Verizon

**Land Area:** 1.69 acres ±

**Zoning:** C-2 (Commercial/General)

## Demographics 2016

	1 Mile	3 Miles	5 Miles
<b>Population</b>	4,013	20,041	24,689
<b>Avg. HH Income</b>	\$34,298	\$42,768	\$44,143



407-812-8000

[www.RealPropertySpecialists.com](http://www.RealPropertySpecialists.com)

**REAL PROPERTY SPECIALISTS, INC**

Appraisers • Brokers • Consultants

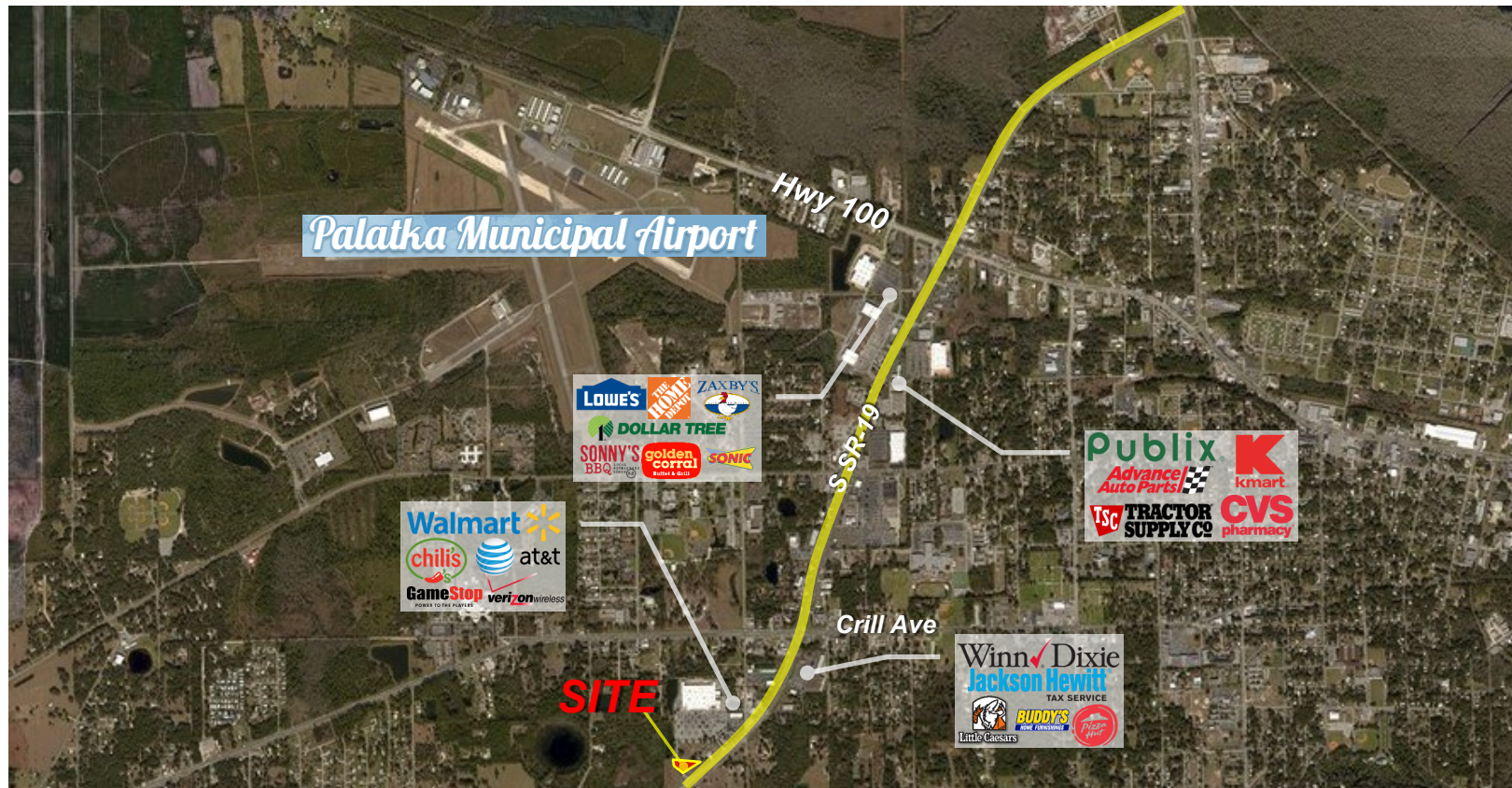
The information contained herein is submitted subject to errors, omissions, prior sale or lease, or withdrawal without notice.



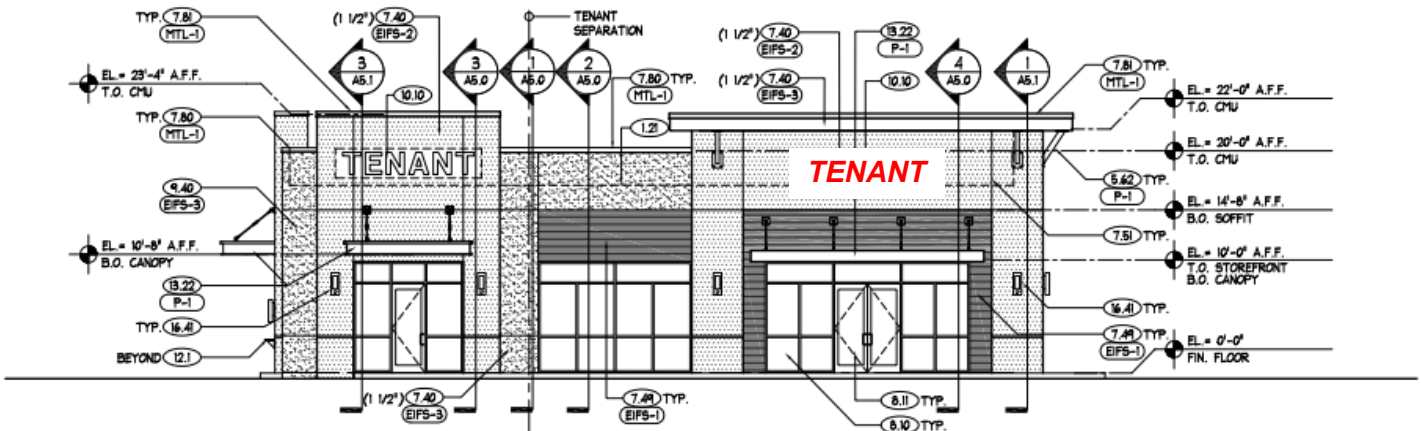
# Palatka Retail Development

Palatka, FL

**GROUND LEASE OR BTS**



## Proposed Rendering



407-812-8000

[www.RealPropertySpecialists.com](http://www.RealPropertySpecialists.com)

**REAL PROPERTY SPECIALISTS, INC**

Appraisers • Brokers • Consultants

The information contained herein is submitted subject to errors, omissions, prior sale or lease, or withdrawal without notice.