



For lease

Plymouth Tech Center
2405 Xenium Lane N, Suite 2435
10,328 SF Available

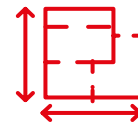
 **JLL** SEE A BRIGHTER WAY

Building specifications

Plymouth Tech Center



| | |
|---------------------|---|
| Building SF | 52,487 SF |
| Available SF | 10,328 SF |
| Clear Height | 14' |
| Loading | One (1) dock door |
| Zoning | I-2 Industrial |
| Power | 3-phase |
| Parking | 2.96/1,000 |
| Lease Rate | Negotiable |
| 2025 CAM/Tax | \$2.87 PSF CAM \$4.10 PSF Tax \$6.98 PSF Total |



10,328 SF available
for lease



Fully climate
controlled



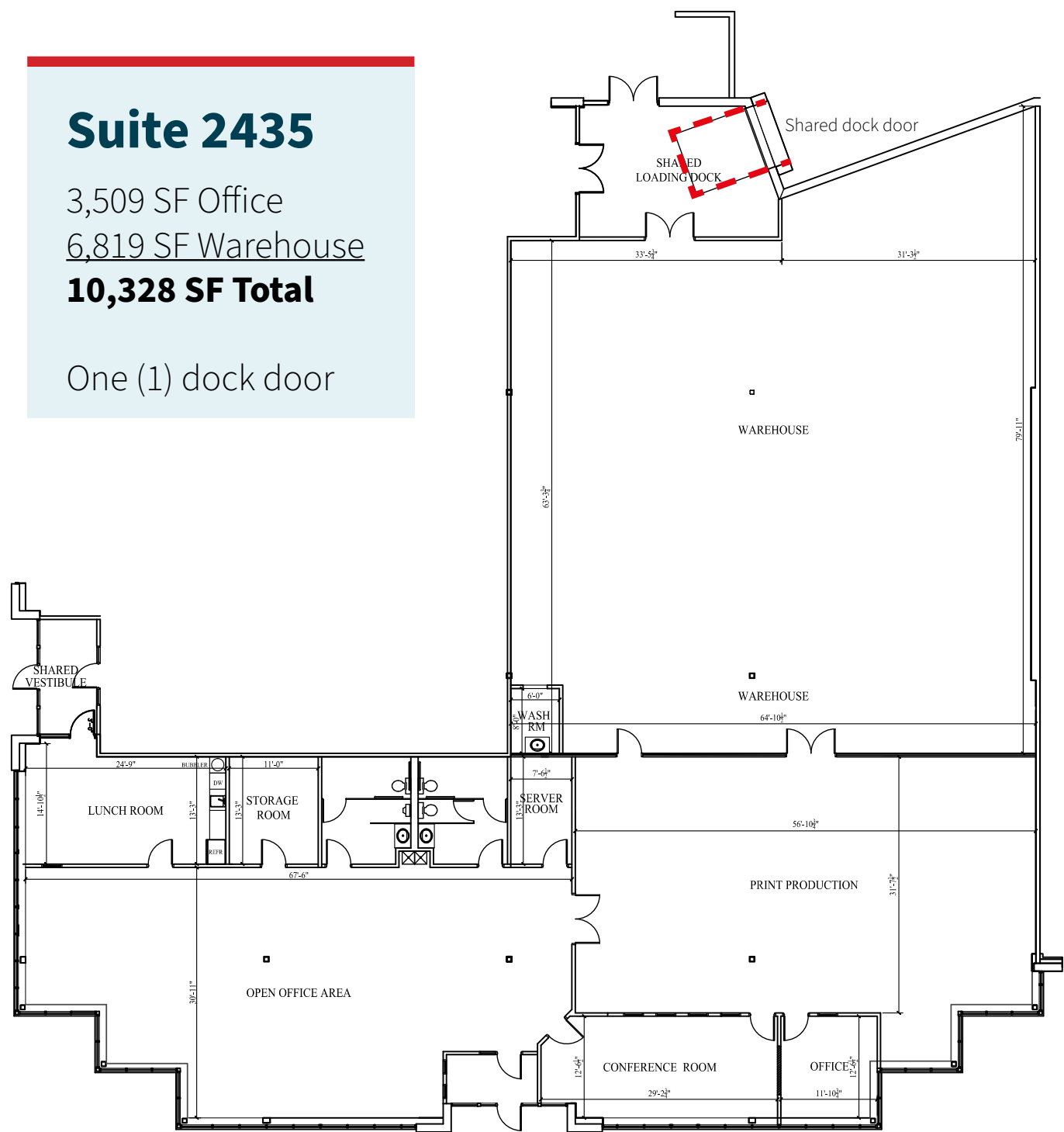
Monument and
building signage
available

Floor plan

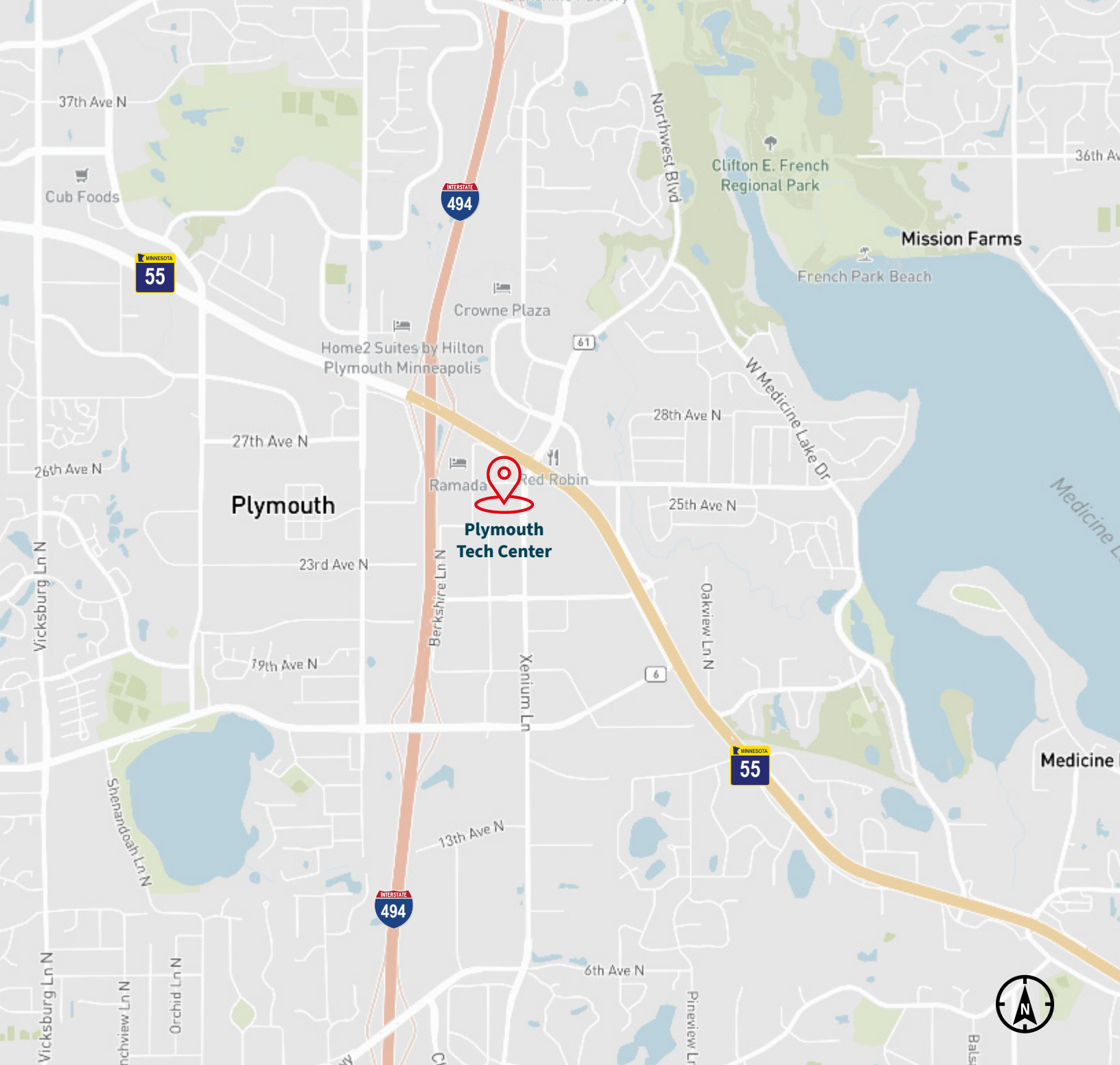
Suite 2435

3,509 SF Office
6,819 SF Warehouse
10,328 SF Total

One (1) dock door



SUITE 2435
10,328 R.S.F.



Kyle Rafshol
Vice President
kyle.rafshol@jll.com
+1 612 217 6780

Dan Larew, CCIM SIOR
Managing Director
dan.larew@jll.com
+1 612 217 6726

JLL
250 Nicollet Mall
Suite 1000
Minneapolis, MN 55401

Although information has been obtained from sources deemed reliable, JLL does not make any guarantees, warranties or representations, express or implied, as to the completeness or accuracy as to the information contained herein. Any projections, opinions, assumptions or estimates used are for example only. There may be differences between projected and actual results, and those differences may be material. JLL does not accept any liability for any loss or damage suffered by any party resulting from reliance on this information. If the recipient of this information has signed a confidentiality agreement with JLL regarding this matter, this

Jones Lang LaSalle Americas, Inc. License #: CO508577000