

For Lease

# Downtown Reno Office Space



LOGIC



236 W. 6th St.  
Reno, NV 89503

**Michael Keating, SIOR**  
Partner  
775.386.9727  
mkeating@logicCRE.com  
S.0174942

**Chase Houston, SIOR**  
Senior Vice President  
775.848.6007  
chouston@logicCRE.com  
S.0174274

**Michael Dorn**  
Senior Associate  
775.453.4436  
mdorn@logicCRE.com  
S.0189635

# Listing Snapshot



**\$1.20 - \$1.35 PSF NNN**  
Lease Rate



**± 1,101 - 9,502 SF**  
Available Square Footage



**\$0.80 PSF**  
Estimated NNN Cost

## Property Highlights

- Multi-tenant medical office
- Available for immediate occupancy
- Interior renovation options available for qualified tenants
- Convenient access to Saint Mary's Regional Medical Campus
- Connected to a parking garage with ± 400 spaces
- Easy access to I-80

## Demographics

	1-mile	3-mile	5-mile
2023 Population	21,683	138,323	243,973
2023 Average Household Income	\$71,058	\$80,403	\$90,923
2023 Total Households	10,628	59,601	100,868











**SUBJECT**  
± 1,101 - 9,502 SF

Schools  
University of Nevada Reno

+ Hospitals  
Saint Mary's Regional Medical Center

+ Hospitals  
Reno Orthopedic Center (ROC)

Retail  
BUZZED COFFEE  
LAUGHING PLANET



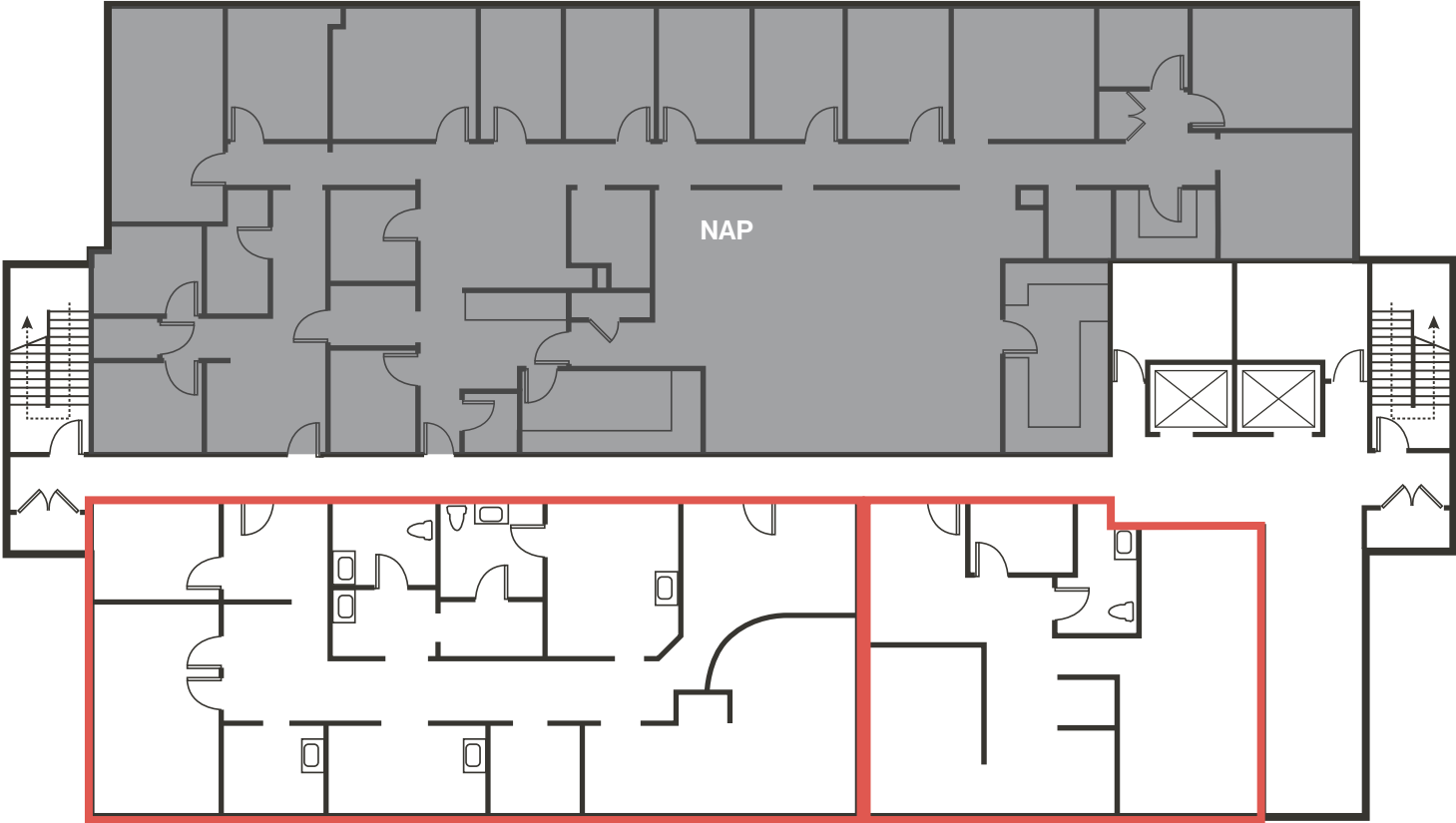
Hotels / Casinos  
**THE ROW**  
ELDORADO | CIRCUS CIRCUS | SILVER LEGACY  
IN THE HEART OF RENO | THEROWRENO.COM

W. 6th St. // 3,550 CPD

Nevada St.

W. 5th St. // 4,600 CPD

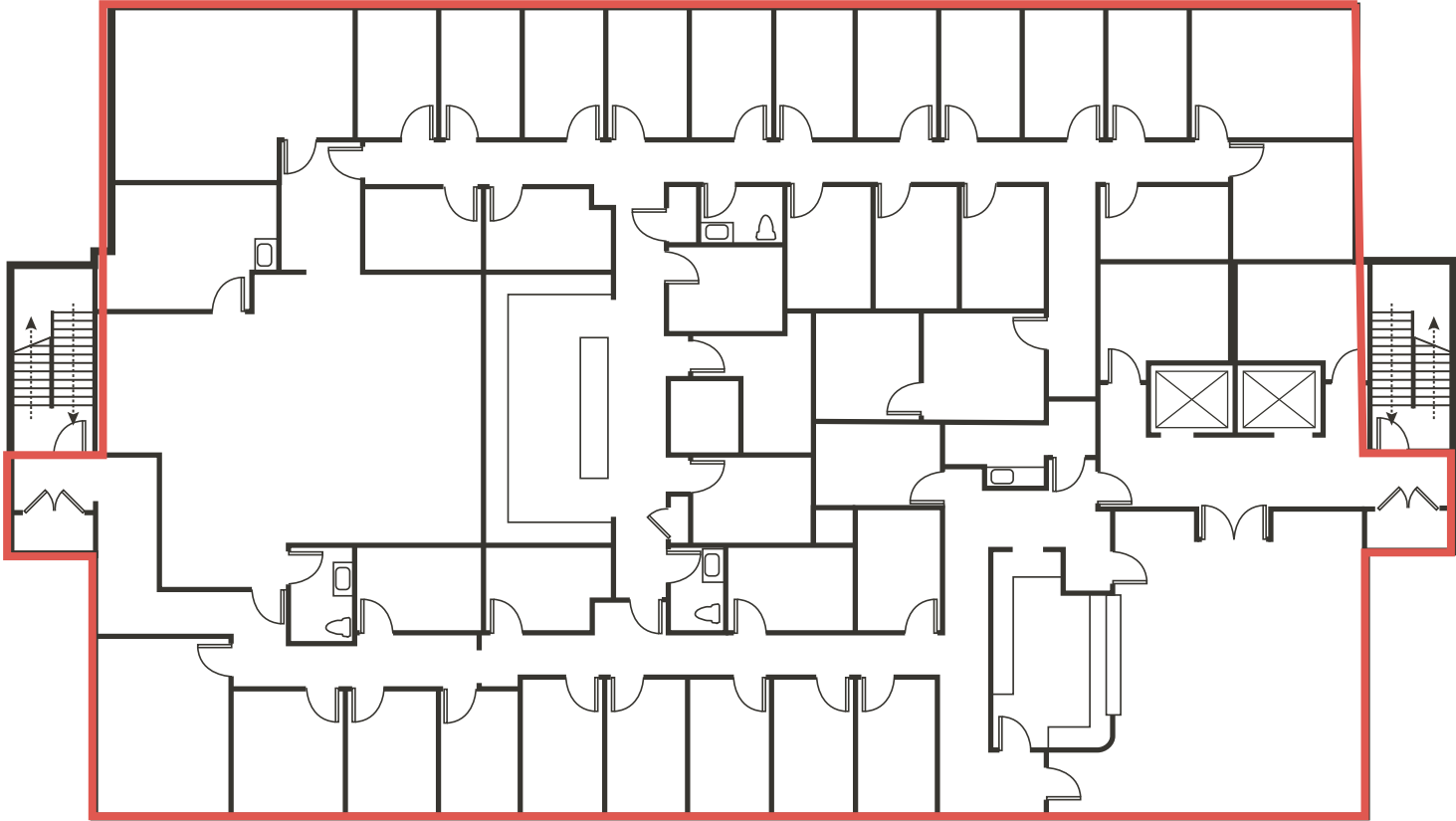
N. Arlington Ave. // 5,500 CPD



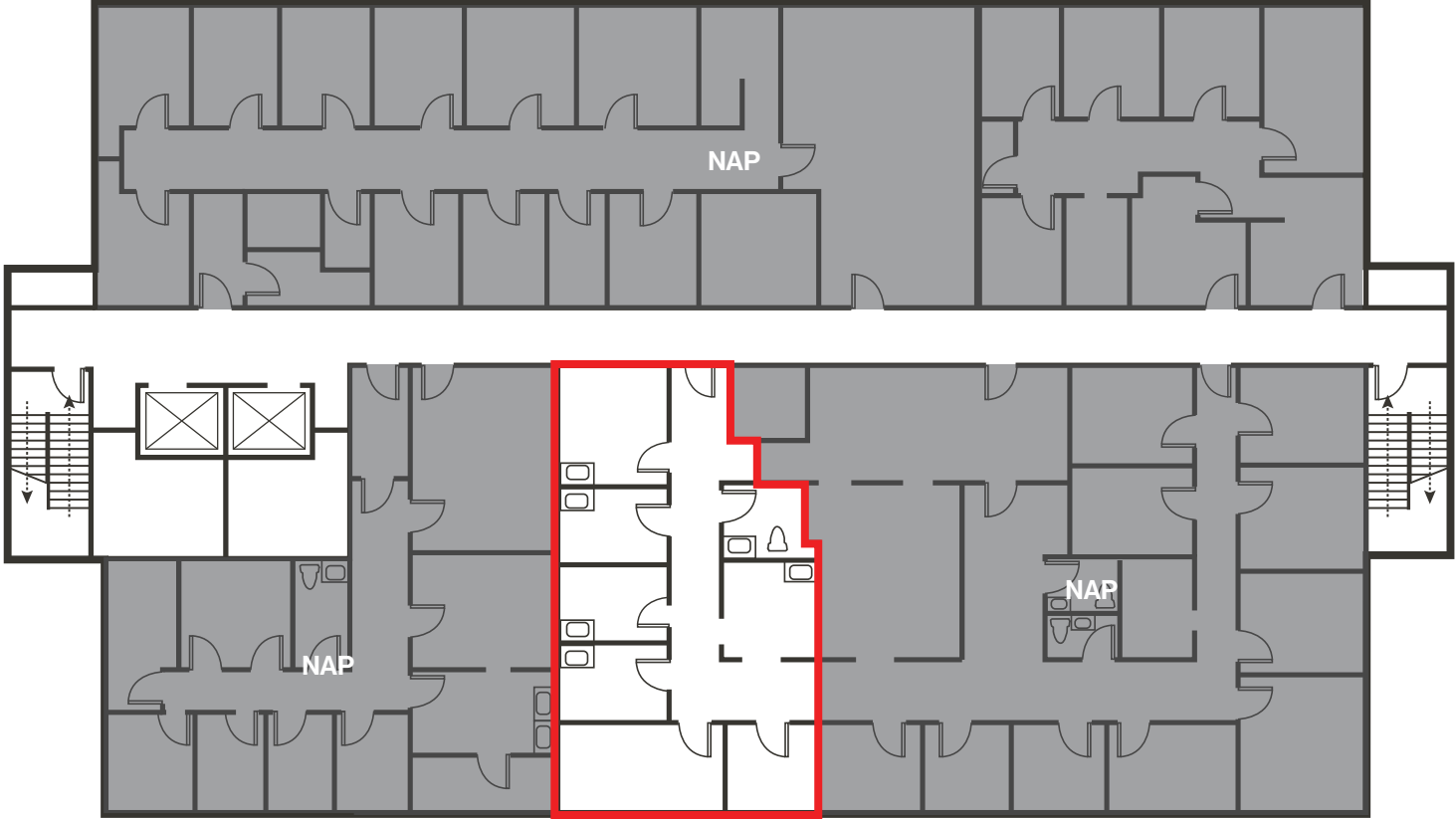
Suite 107  
± 2,347 SF

Suite 101  
± 1,203 SF

[Click for a Virtual Tour | Suite 107](#)



Suite 200  
± 9,502 SF



Suite 302  
± 1,101 SF

[Click for a Virtual Tour | Suite 302](#)



Property Photos





# LOGIC Commercial Real Estate

## Specializing in Brokerage and Receivership Services



Join our email list and  
connect with us on LinkedIn

The information herein was obtained from sources deemed reliable; however LOGIC Commercial Real Estate makes no guarantees, warranties or representation as to the completeness or accuracy thereof.

For inquiries please reach out to our team.

**Michael Keating, SIOR**

Partner  
775.386.9727  
mkeating@logicCRE.com  
S.0174942

**Chase Houston, SIOR**

Senior Vice President  
775.848.6007  
chouston@logicCRE.com  
S.0174274

**Michael Dorn**

Senior Associate  
775.453.4436  
mdorn@logicCRE.com  
S.0189635