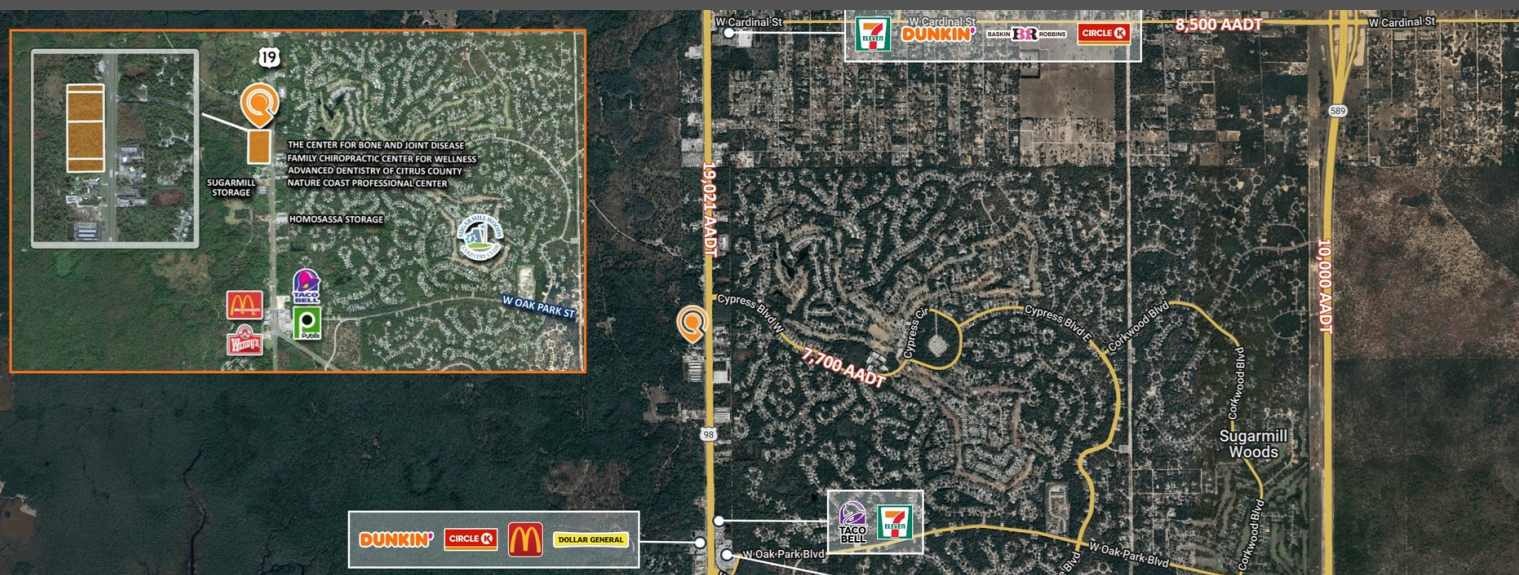


SUGARMILL WOODS DEVELOPMENT SITE

8320 S Suncoast Blvd | Homosassa, FL 34446

19.83 AC Site For Sale | Central Florida



CALL FOR
PRICE



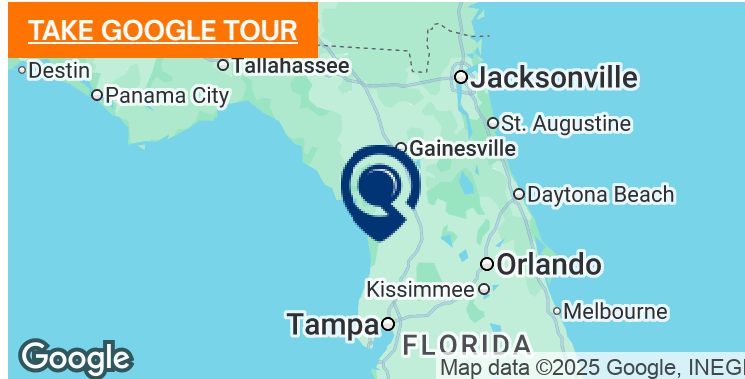
19.83 ACRES
SIZE



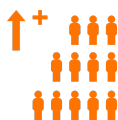
GNC
ZONING

- Large, commercially-zoned multi-use site (19.83 AC).
- Can be purchased entirely or individually.
- Between two major retail hubs: Publix and Walmart.
- Cater to the "Sugarmill Woods Country Club" golf community (4,000 homes).
- Growing Citrus County area with above-average area incomes.

PROPERTIES.LQCRE.COM/RT-SUGARMILL



5-MI POPULATION
26,330



5-YR POP. INCREASE
1.7%



5-MI AVG HH INCOME
\$88,542

EXTEND YOUR REACH WITH PAUL'S PORTFOLIO, MARKET UPDATES, EXPERT INSIGHT & MORE

[VIEW MORE LISTINGS](#)

[CONNECT ON LINKEDIN](#)

[VISIT PAUL'S WEBSITE](#)

[SUBSCRIBE ON YOUTUBE](#)



5440 Mariner St #112
Tampa, FL 33609
LQCRE.COM

Paul Rutledge
Senior Broker Associate
D: 813.999.1942
C: 941.228.2198
prutledge@lqcre.com

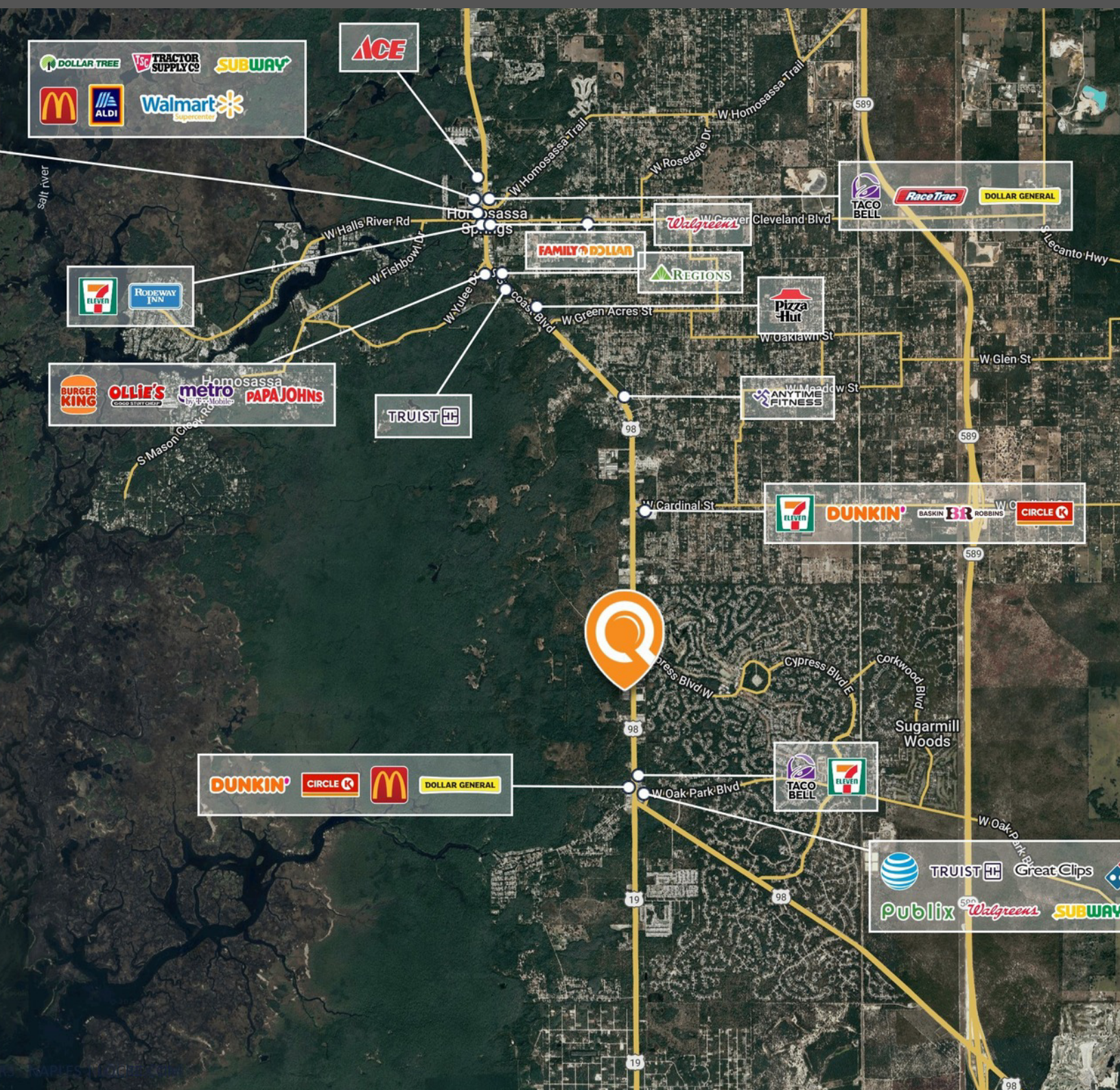
Zachary Ellis
Associate
D: 813.540.3320
C: 813.493.3437
zellis@lqcre.com

Information obtained from owner(s) or other sources deemed reliable. We have no reason to doubt its accuracy, but cannot guarantee it. All properties subject to change or withdrawal without notice.

SUGARMILL WOODS DEVELOPMENT SITE

8320 S Suncoast Blvd | Homosassa, FL 34446

19.83 AC Site For Sale | Central Florida



LQ Commercial
REAL ESTATE SERVICES

5440 Mariner St #112

Tampa, FL 33609

LQCRE.COM

Paul Rutledge

Senior Broker Associate

D: 813.999.1942

C: 941.228.2198

prutledge@lqcre.com

Zachary Ellis

Associate

D: 813.540.3320

C: 813.493.3437

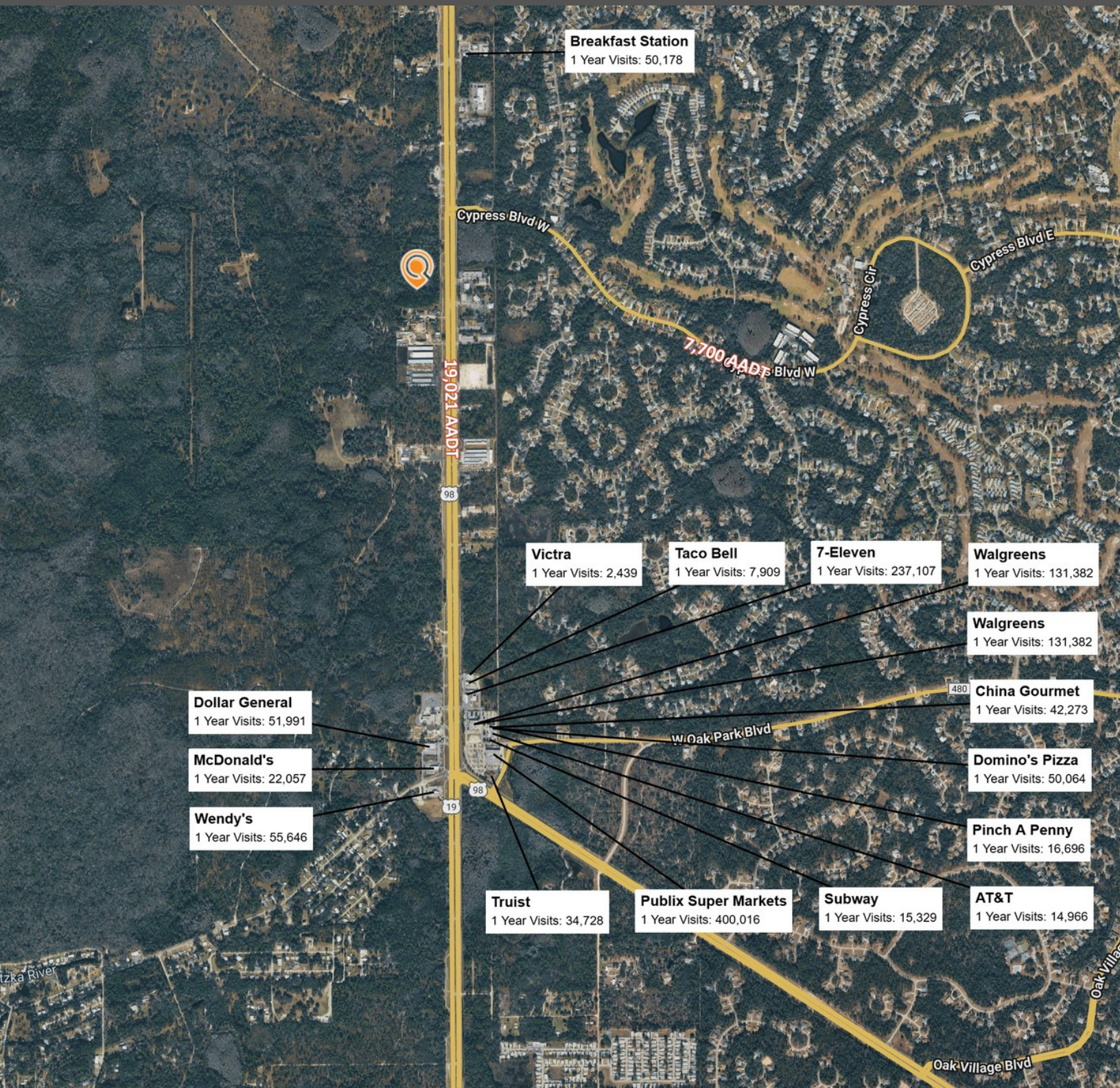
zellis@lqcre.com

Information obtained from owner(s) or other sources deemed reliable. We have no reason to doubt its accuracy, but cannot guarantee it. All properties subject to change or withdrawal without notice.

SUGARMILL WOODS DEVELOPMENT SITE

8320 S Suncoast Blvd | Homosassa, FL 34446

19.83 AC Site For Sale | Central Florida



 **LQ Commercial**
REAL ESTATE SERVICES
5440 Mariner St #112
Tampa, FL 33609
LQCRE.COM

Paul Rutledge
Senior Broker Associate
D: 813.999.1942
C: 941.228.2198
prutledge@lqcre.com

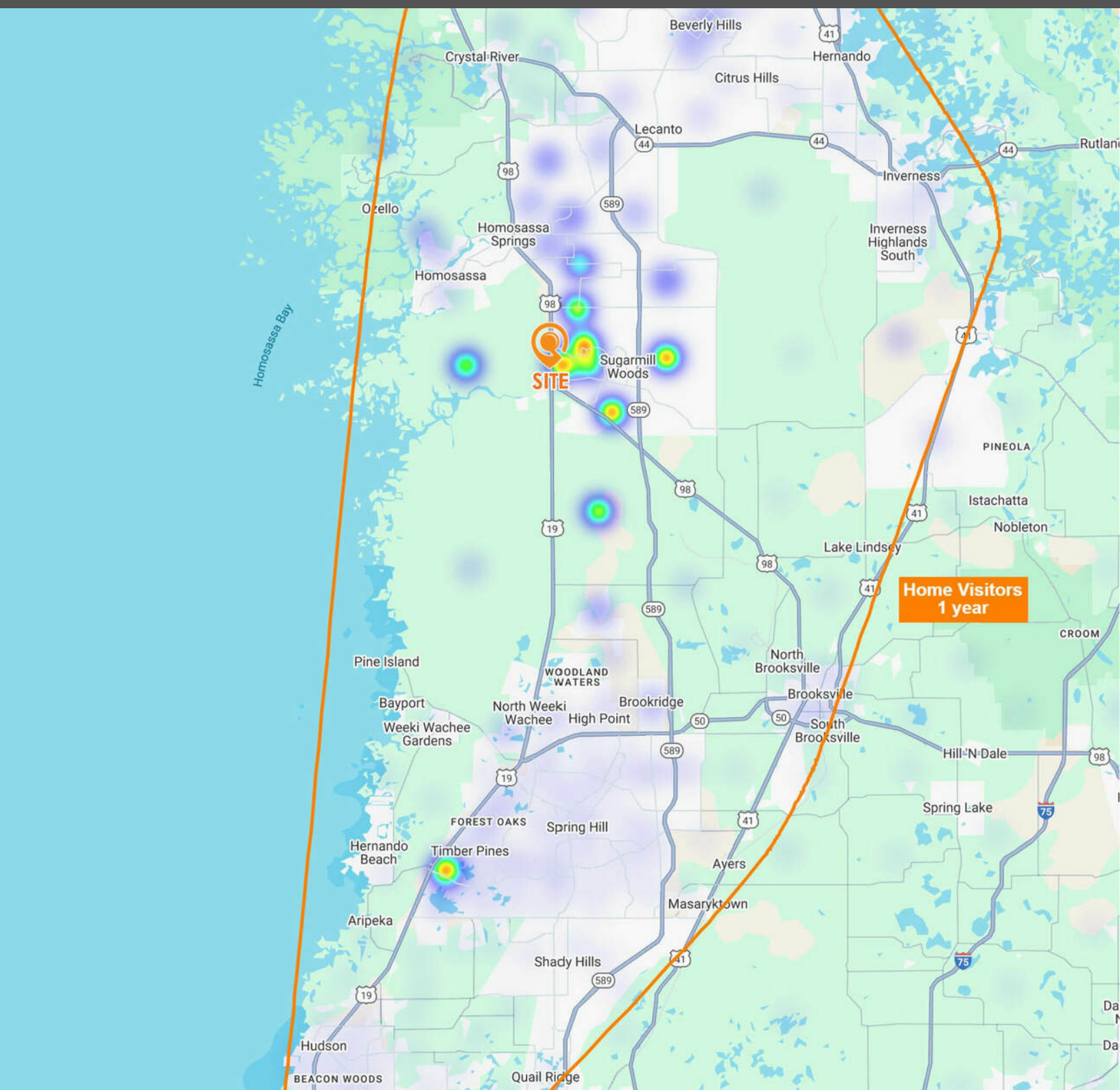
Zachary Ellis
Associate
D: 813.540.3320
C: 813.493.3437
zellis@lqcre.com

Information obtained from owner(s) or other sources deemed reliable. We have no reason to doubt its accuracy, but cannot guarantee it. All properties subject to change or withdrawal without notice.

SUGARMILL WOODS DEVELOPMENT SITE

8320 S Suncoast Blvd | Homosassa, FL 34446

19.83 AC Site For Sale | Central Florida



LQ Commercial
REAL ESTATE SERVICES

5440 Mariner St #112

Tampa, FL 33609

LQCRE.COM

Paul Rutledge

Senior Broker Associate

D: 813.999.1942

C: 941.228.2198

prutledge@lqcre.com

Zachary Ellis

Associate

D: 813.540.3320

C: 813.493.3437

zellis@lqcre.com

Information obtained from owner(s) or other sources deemed reliable. We have no reason to doubt its accuracy, but cannot guarantee it. All properties subject to change or withdrawal without notice.