

SUITES RANGE FROM
±8,000 SF TO ±13,000 SF

E. Charleston Rd

2513-2525 EAST CHARLESTON ROAD | MOUNTAIN VIEW, CA



ROGER FIELDS

(650) 327-2014 OFFICE | (650) 207-1610 CELL
RFIELDS@PENINSULALAND.COM

PARKER FIELDS

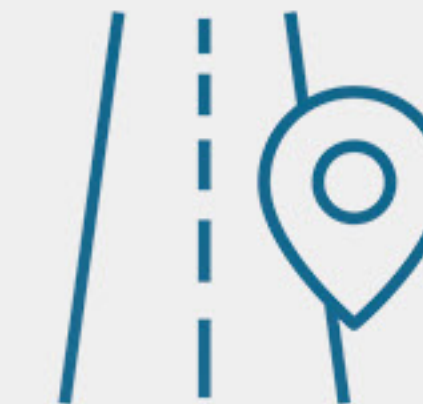
(650) 327-2014 OFFICE | (650) 208-9979 CELL
PARKER@PENINSULALAND.COM





2513-2525 E CHARLESTON
MOUNTAIN VIEW, CA

PROPERTY HIGHLIGHTS



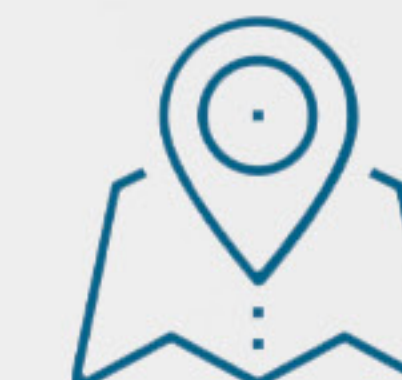
**EASY ACCESS TO
HIGHWAY 101**



**23 MIN. DRIVE TO SFO
AND 15 MIN. TO SJC**



AMPLE PARKING



**CENTRAL PENINSULA
LOCATION**



**AMENITY RICH WITH
SHOPPING CENTER
NEXT DOOR**



**5 MIN. DRIVE TO
SAN ANTONIO
CALTRAIN**



**BUILDING HAS
FIBER CONECTIVITY**



**TWO-STORY
BUILDING**



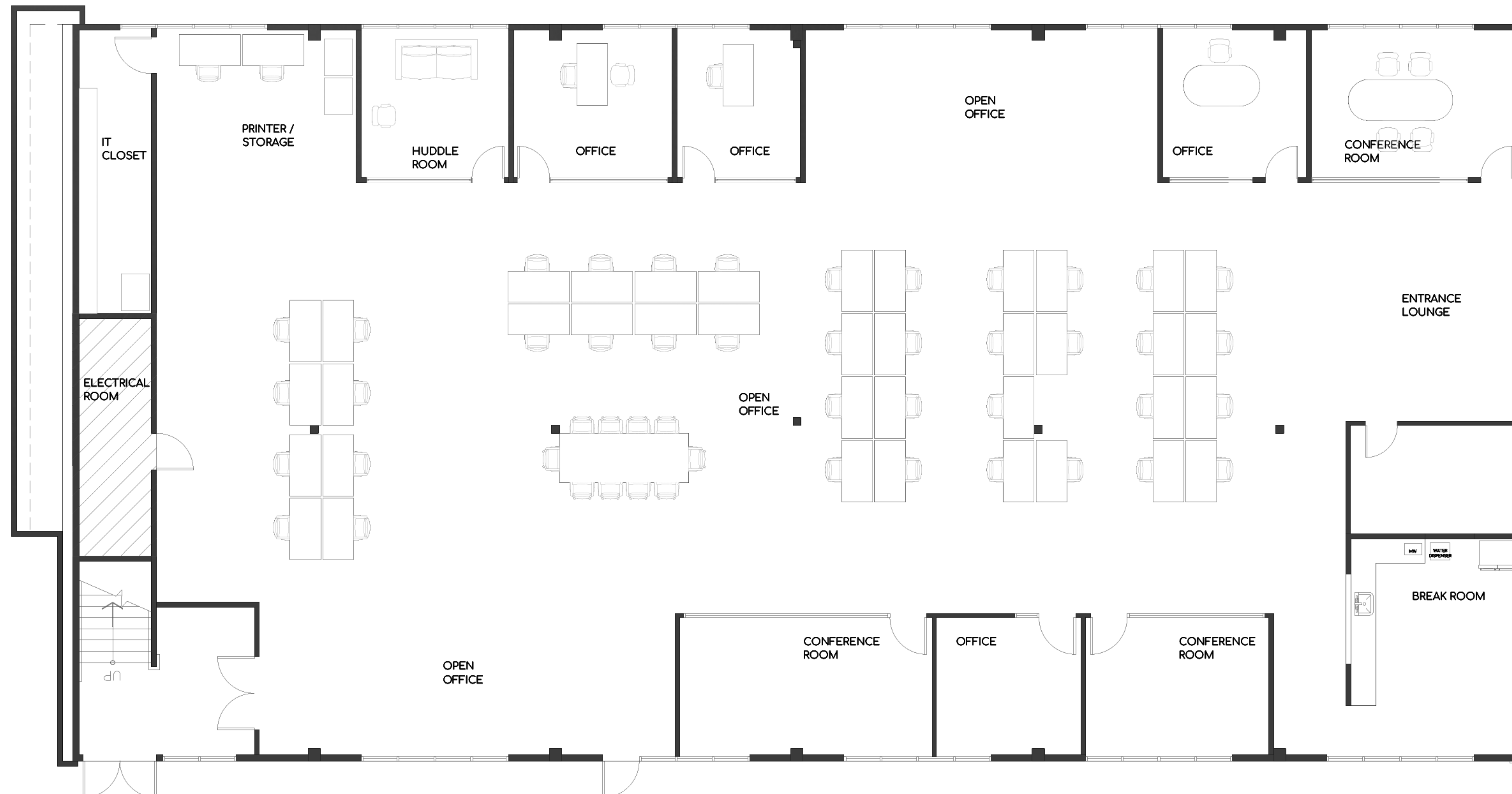


FLOOR PLAN

SUITE 100 | 7,647 FT²

DESKS: 46 | PRIVATE OFFICES: 4 | CONFERENCE ROOMS: 3
HUDDLE ROOM: 1 | BREAK ROOM | ENTRANCE LOUNGE

2513 E CHARLESTON
MOUNTAIN VIEW, CA



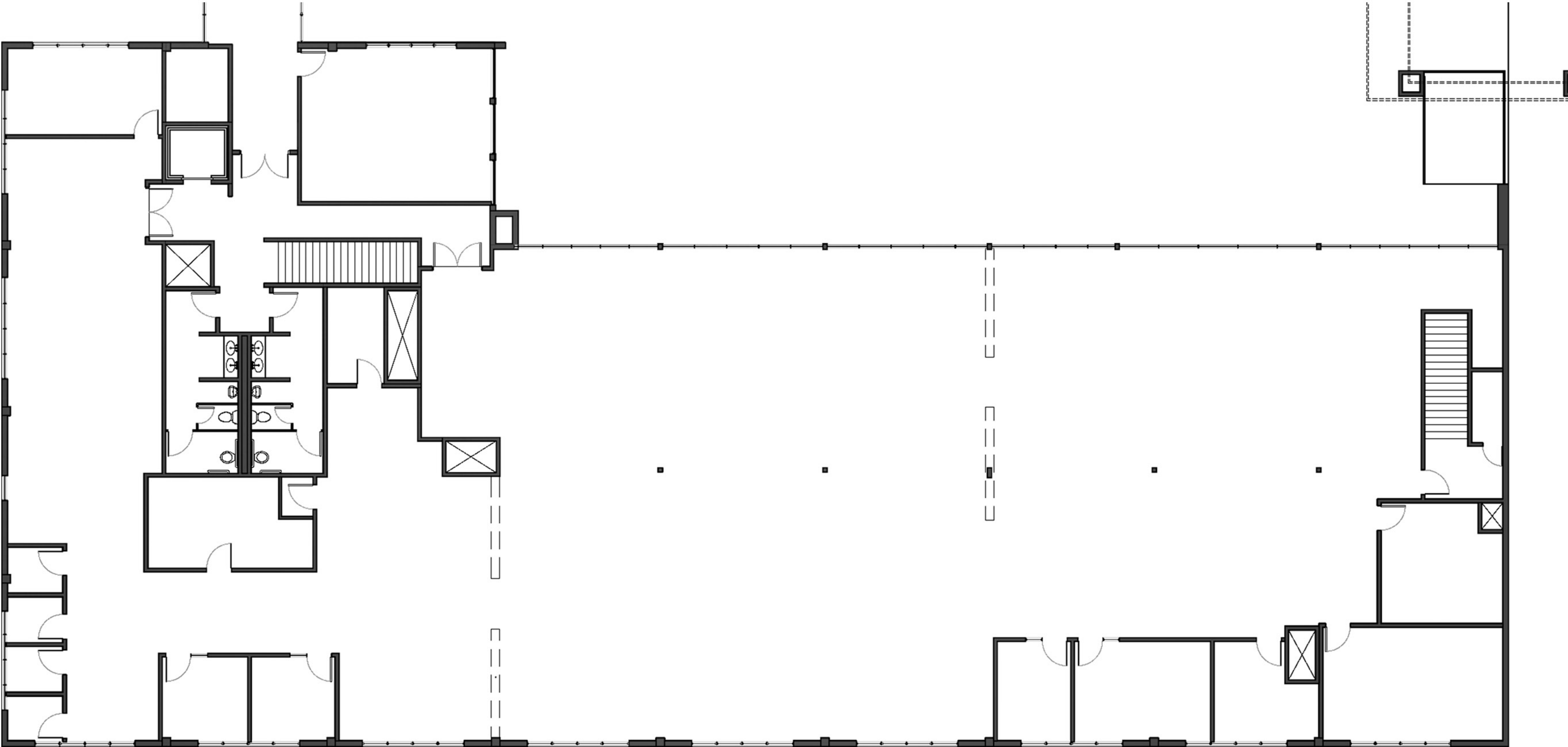
*FURNISHED
*PLUG & PLAY



FLOOR PLAN

SUITE 200 | 12,517 FT²

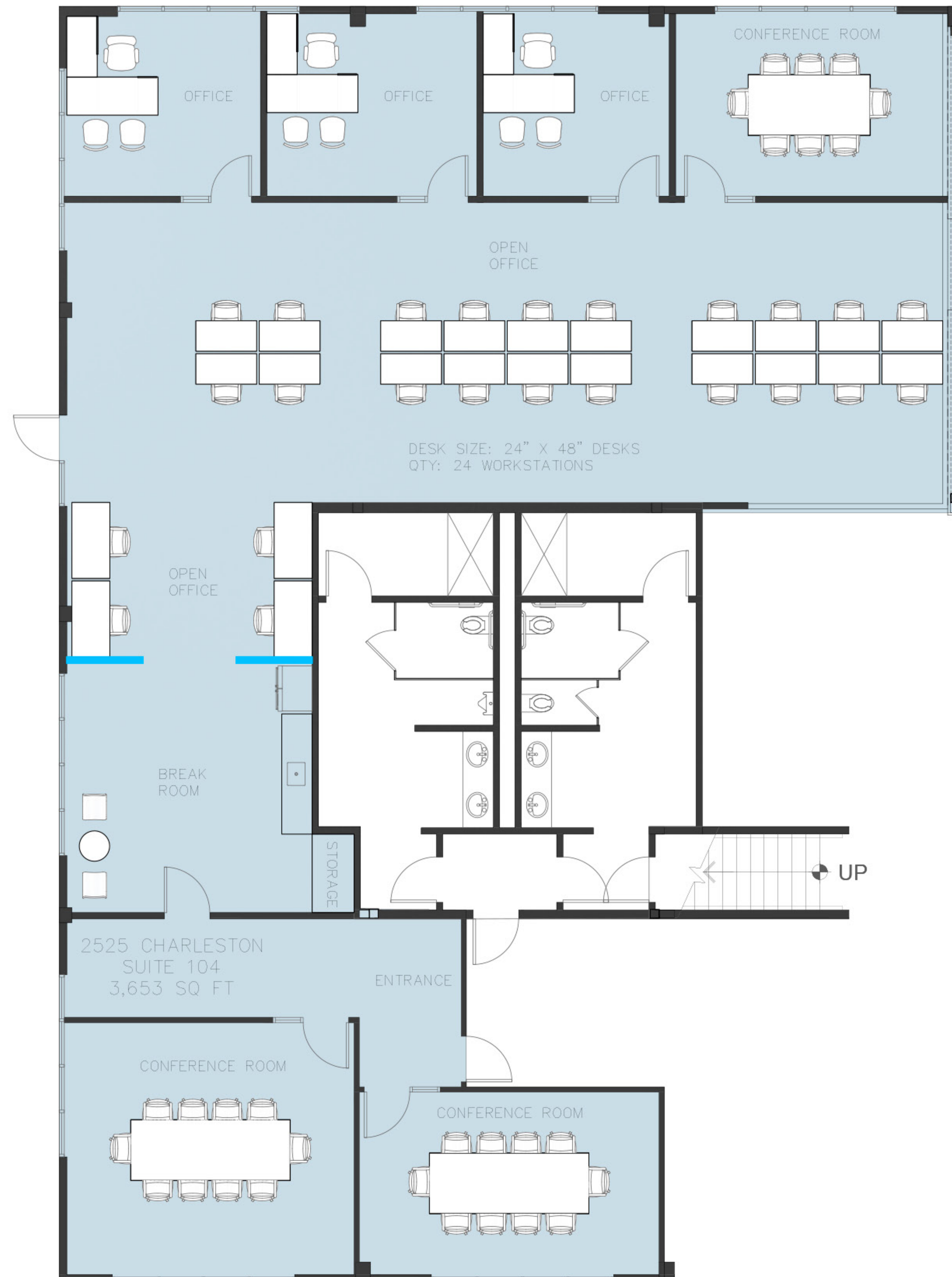
2513 E CHARLESTON
MOUNTAIN VIEW, CA



FLOOR PLAN

SUITE 104 | 3,653 FT²

2525 E CHARLESTON
MOUNTAIN VIEW, CA





SURROUNDING AMENITIES



2513 E CHARLESTON



CloudChef



SAN ANTONIO RD

Enrich Community Park

SAN ANTONIO RD



FOR MORE INFORMATION, PLEASE
CONTACT THE LISTING AGENTS:

ROGER FIELDS

(650) 327-2014 OFFICE
(650) 207-1610 CELL
RFIELDS@PENINSULALAND.COM

PARKER FIELDS

(650) 327-2014 OFFICE
(650) 208-9979 CELL
PARKER@PENINSULALAND.COM



© 2021 PENINSULA LAND & CAPITAL | 2390 EL CAMINO REAL, SUITE 210 | PALO ALTO, CA 94306 | 650-327-2014

THIS INFORMATION SUPPLIED HEREIN IS FROM SOURCES WE DEEM RELIABLE. IT IS PROVIDED WITHOUT ANY REPRESENTATION, WARRANTY, OR GUARANTEE, EXPRESSED OR IMPLIED AS TO ITS ACCURACY. PROSPECTIVE BUYER OR TENANT SHOULD CONDUCT AN INDEPENDENT INVESTIGATION AND VERIFICATION OF ALL MATTERS DEEMED TO BE MATERIAL, INCLUDING, BUT NOT LIMITED TO, STATEMENTS OF INCOME AND EXPENSES. CONSULT YOUR ATTORNEY, ACCOUNTANT, OR OTHER PROFESSIONAL ADVISOR.