

# FOR LEASE—FREESTANDING QSR



1550 E RIVERSIDE BLVD, LOVES PARK, IL 61111

## LOCATION FEATURES

- **Site on hardcorner of E Riverside Blvd** (ADT 22,800) at the signalized intersection to enter Super Walmart
- **Dense population of 154,343 within 5 miles** with Average Household Income of \$71,488
- **Major retailers nearby include:** Walmart, CVS, Walgreens, O'Reilly, Verizon, The Salvation Army, Valli Produce, Batteries Plus Bulbs, American Freight
- **Nearby national restaurants and QSRs include:** McDonalds, Starbucks, Dairy Queen, Sonic Drive-In, Burger King, Taco Bell, Applebee's Bar & Grill



## BUILDING DETAILS:

- 4,470 SF on 1.03 acres with 52 Parking Stalls
- Existing Drive-Thru
- Exclusive Monument Signage Available
- Freestanding on Prominent Intersection

Owned and managed by  
the CARRINGTON company  
1.800.291.1454

For more information, contact  
**JON PALSHA**

916.844.7692, office  
925.997.7506, mobile  
[jon@thecarrco.com](mailto:jon@thecarrco.com)

## — SITE PLAN —



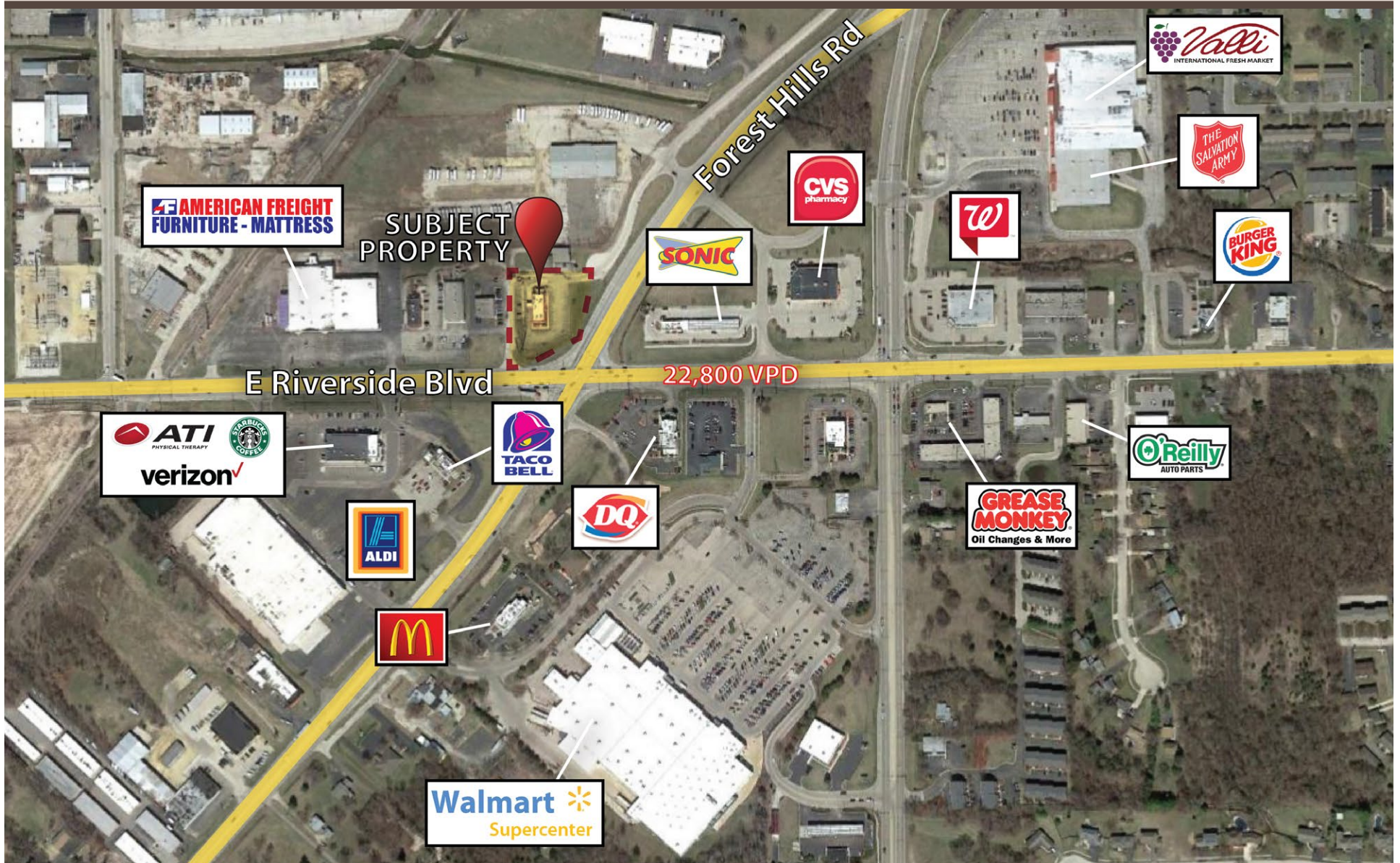
Owned and managed by  
the CARRINGTON company  
1.800.291.1454

For more information, contact  
**JON PALSHA**

916.844.7692, office  
925.997.7506, mobile  
[jon@thecarrco.com](mailto:jon@thecarrco.com)



## — SURROUNDING RETAIL MAP —



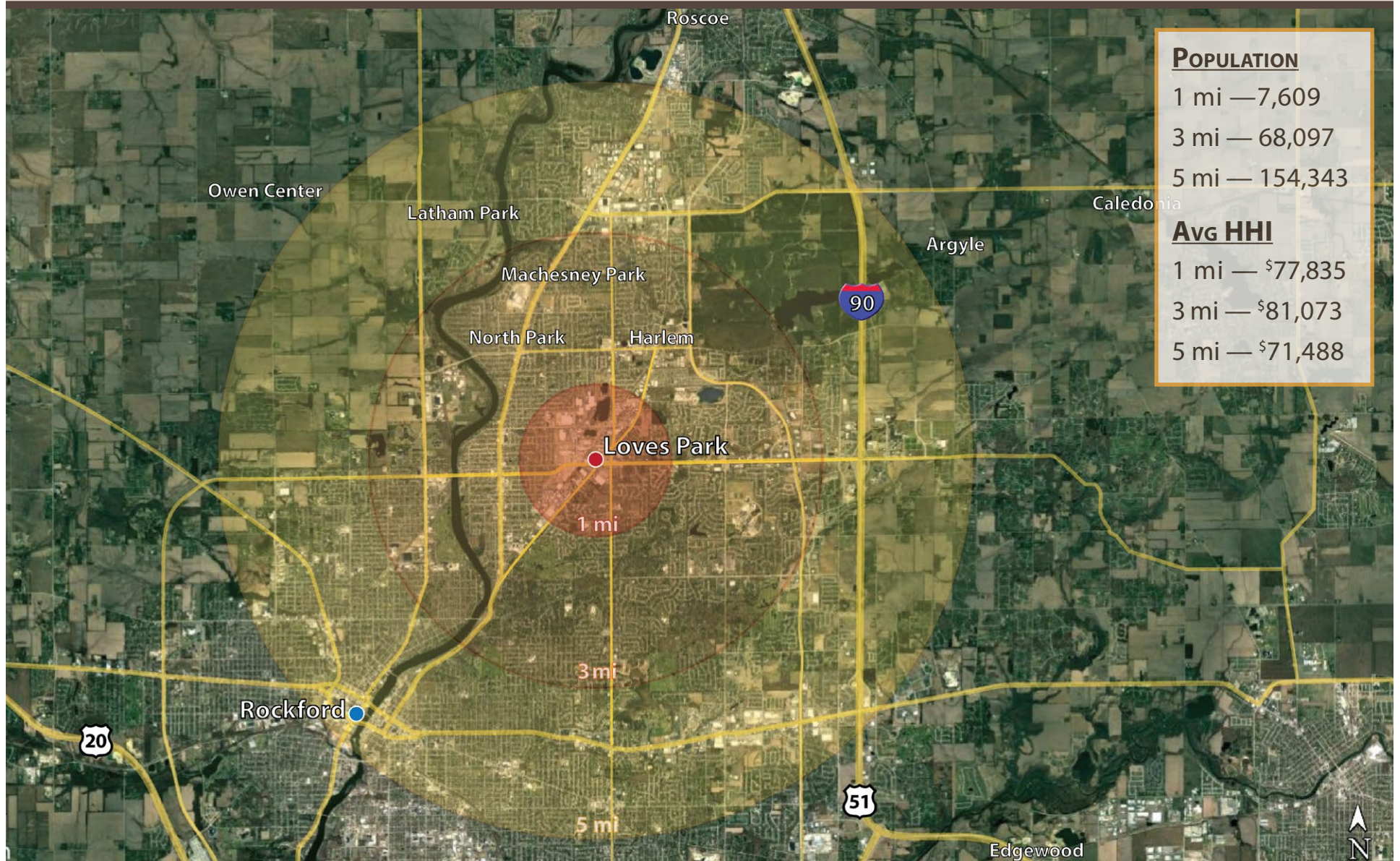
Owned and managed by  
the CARRINGTON company  
1.800.291.1454

For more information, contact  
**JON PALSHA**

916.844.7692, office  
925.997.7506, mobile  
[jon@thecarrco.com](mailto:jon@thecarrco.com)



## — DEMOGRAPHICS —



Owned and managed by  
the CARRINGTON company  
1.800.291.1454

For more information, contact  
**JON PALSHA**

916.844.7692, office  
925.997.7506, mobile  
[jon@thecarrco.com](mailto:jon@thecarrco.com)