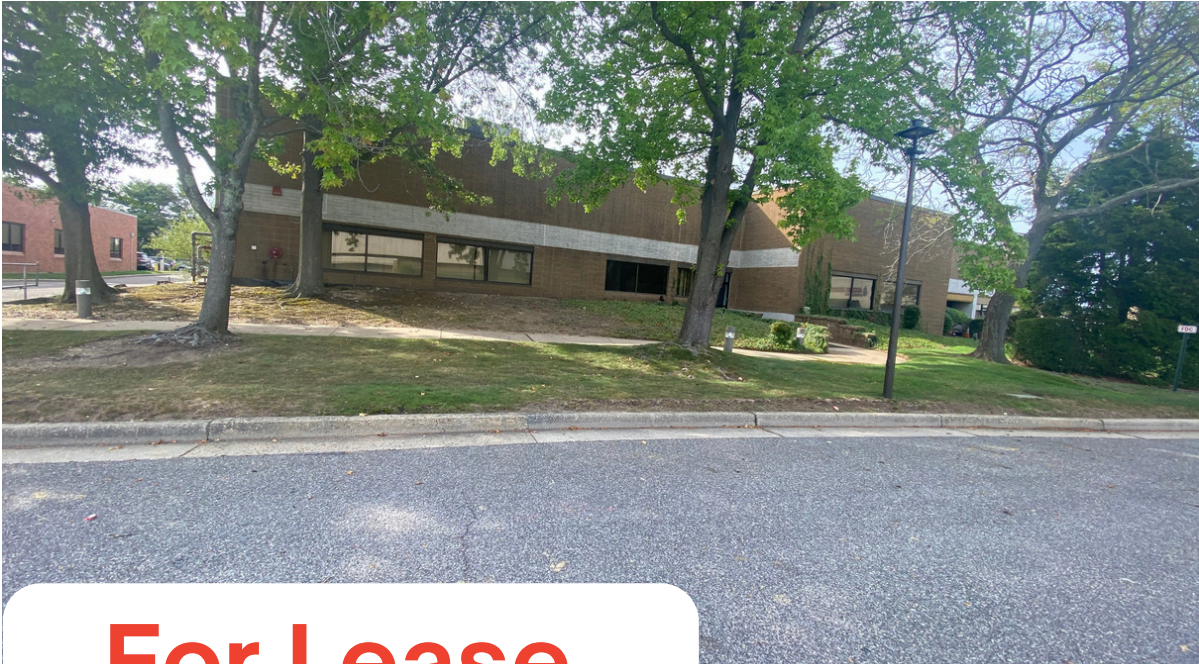


# GREINER-MALTZ

REAL ESTATE

81 EXECUTIVE BLVD. | FARMINGDALE, NY



## For Lease

- +/- 10,300 Sq. Ft. Office/Flex Space
- Great Parking
- Large Grassy Area
- No Loss Factor

Suitable for Medical or School Facility

*Located Close to Retail,  
Restaurants, Banking  
and Shopping*

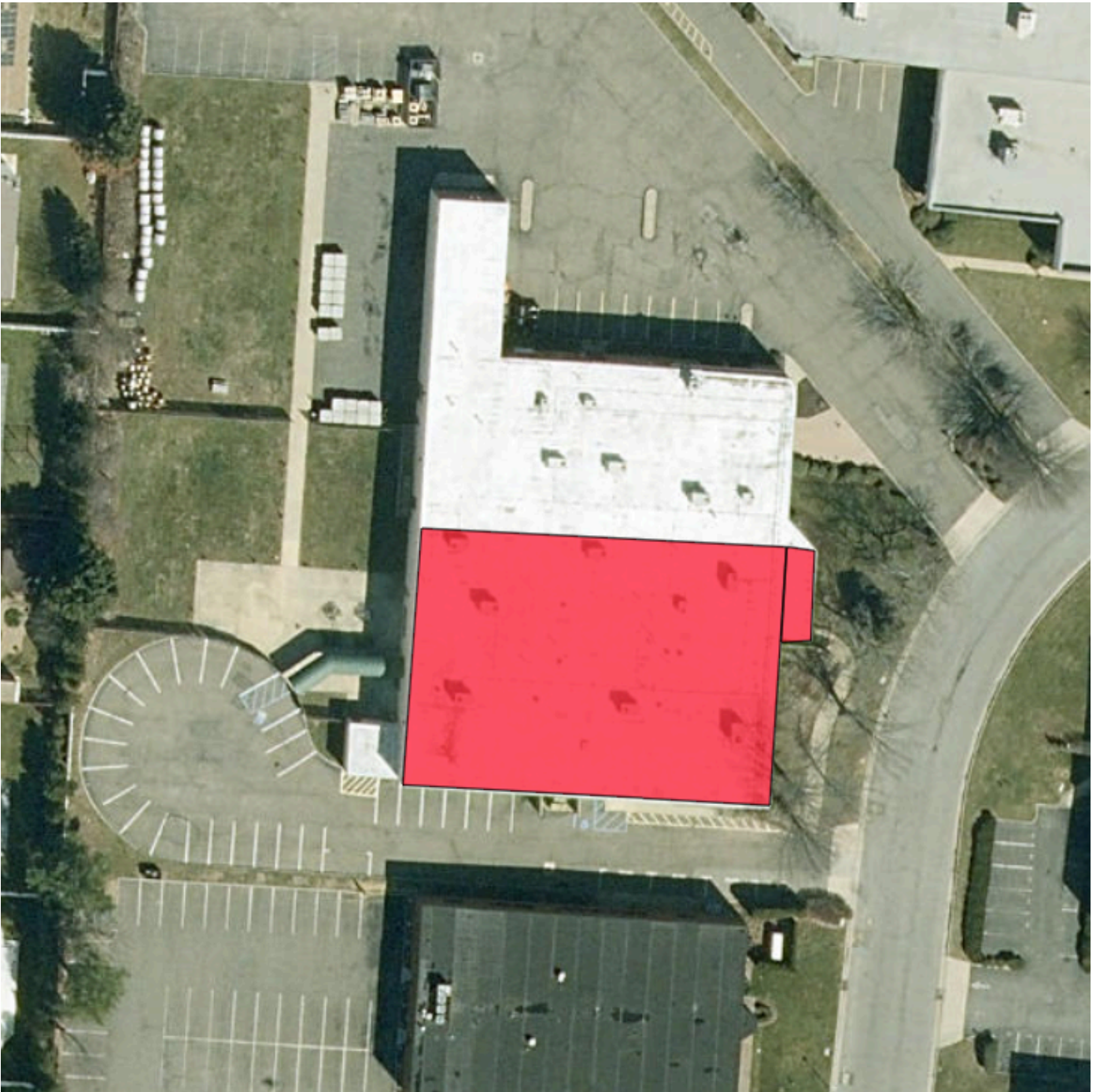
---

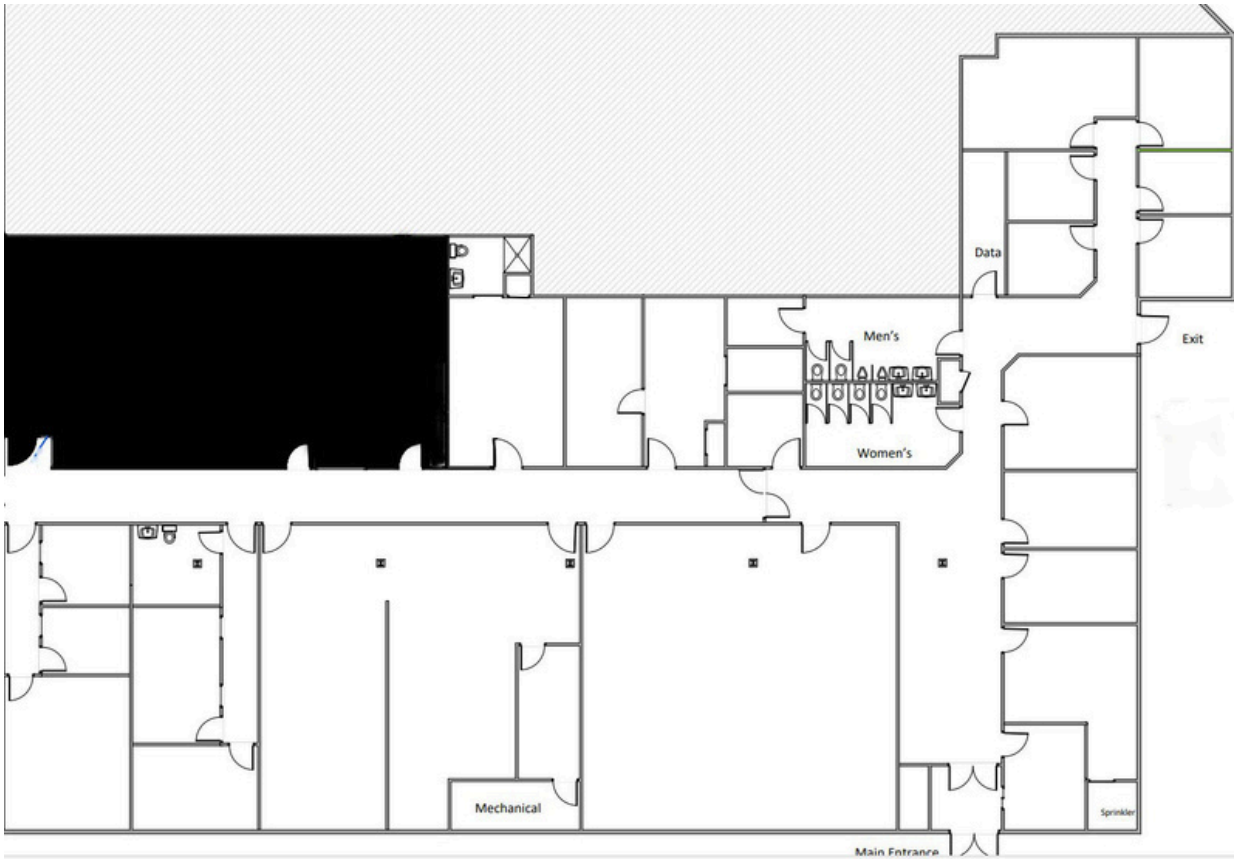
Please Contact Exclusive Broker:  
Tom Attivissimo (516) 606-6161  
Email: [tomatti@greiner-maltzofli.com](mailto:tomatti@greiner-maltzofli.com)

No warranty or representation, expressed or implied, is made as to the accuracy of the information contained herein, and same is submitted subject to errors, omissions, change of price, rental or other conditions, withdrawal without notice, and to any special listing conditions, imposed by our principals.



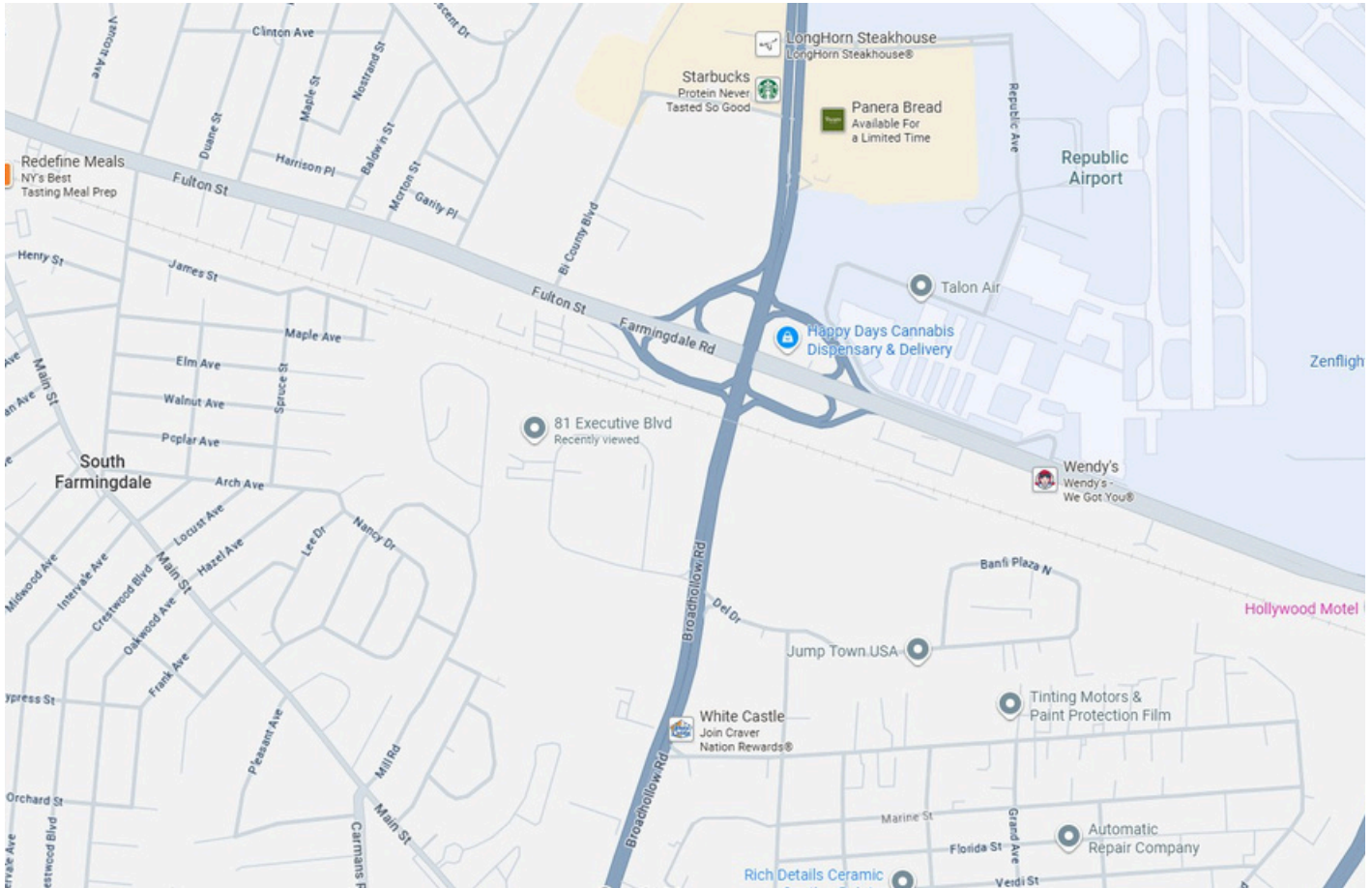






Located within Farmingdale's industrial and business corridor, one of the most active submarkets in western Suffolk County.

Just off Route 110 (Broad Hollow Road) — a major north-south commercial artery connecting to the Long Island Expressway (I-495) to the north and Sunrise Highway (Route 27) to the south.



Long Island Expressway (Exit 49) – approximately 5 minutes north, providing direct access west toward Queens/Nassau and east toward Hauppauge/Melville.

Southern State Parkway (Exit 32) – about 8 minutes south.

Route 110 – heavily trafficked corridor lined with corporate offices, flex/industrial properties, and retail centers.

Airports: 5 minutes to Republic Airport (business aviation) and about 30–35 minutes to JFK or Islip (MacArthur) Airport.



Broad Hollow Road (Route 110) hosts numerous amenities:

Hotels: Courtyard by Marriott, TownePlace Suites

Restaurants: Chili's, Panera, Farmingdale Tap Room

Retail: Home Depot, Costco, Walmart, and Republic Plaza shopping center

Downtown Farmingdale Village (Main St) is about 5 minutes southeast, with restaurants, cafes, and the LIRR Farmingdale Station (for NYC commuters).



Please Contact Exclusive Broker:

Tom Attivissimo (516) 606-6161

Email: [tomatti@greiner-maltzofli.com](mailto:tomatti@greiner-maltzofli.com)