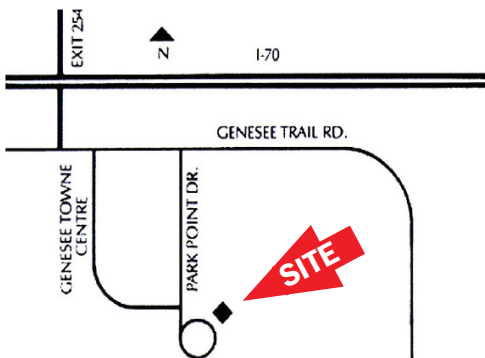




602 PARK POINT DRIVE
Golden, Colorado 80401

PROPERTY FEATURES

- Excellent access to I-70
- Close to retail and restaurants
- Common conference room and showers
- Responsive property management
- Abundant parking



BUILDING SPECIFICATIONS

Available:	Suite 233	582 RSF
	Suite 275	620 RSF
	Suite 150	1,134 RSF
	Suite 250	1,772 RSF
	Suite 105	2,134 RSF
	Suite 130	5,152 RSF

Lease Rate: \$18.50/RSF FSG

Stories: 2

Building Size: 36,402 SF

No warranty or representation is made as to the accuracy of the foregoing information. Terms of sale or lease and availability are subject to change or withdrawal without notice.

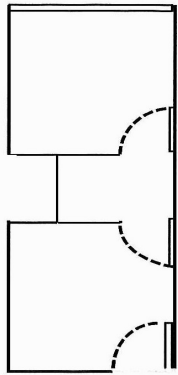
FOR MORE INFORMATION CONTACT:

JAMIE MACBETH

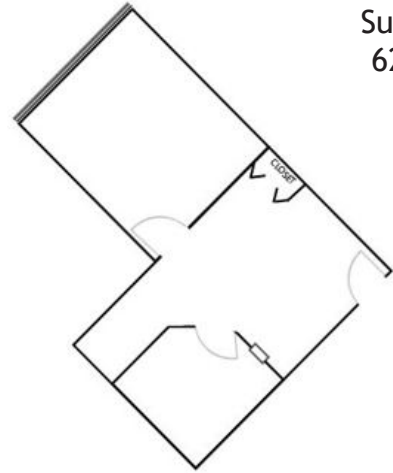
jmacbeth@gcgcre.com | 720.476.5229

RENÉE SPICER

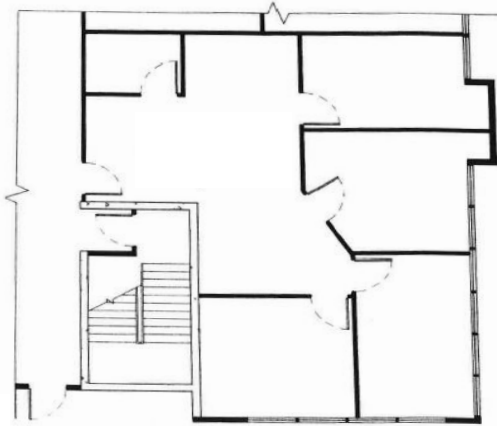
rspicer@gcgcre.com | 720.476.5226



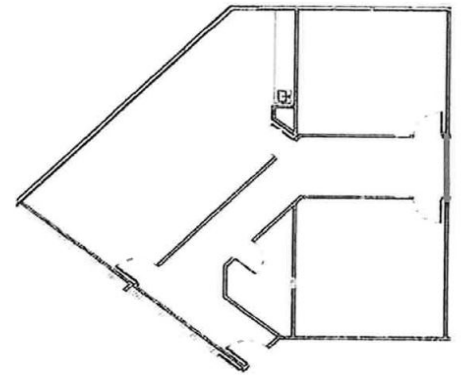
Suite 233
582 RSF



Suite 275
620 RSF



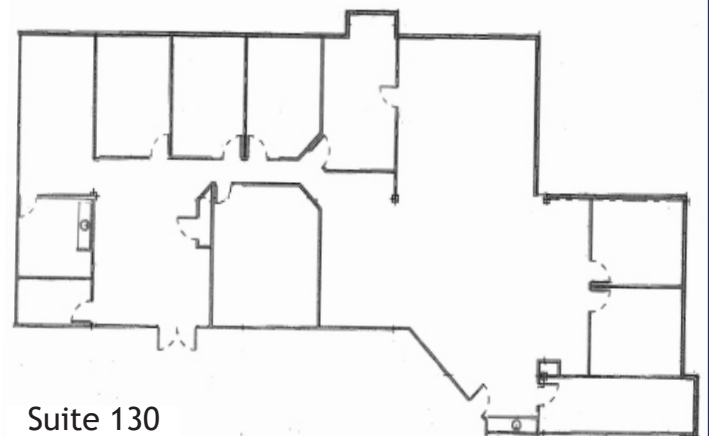
Suite 150
1,134 RSF



Suite 250
1,772 RSF



Suite 105
2,134 RSF



Suite 130
5,152 RSF

No warranty or representation is made as to the accuracy of the foregoing information. Terms of sale or lease and availability are subject to change or withdrawal without notice.

FOR MORE INFORMATION CONTACT:

JAMIE MACBETH

jmacbeth@gcgcre.com | 720.476.5229

RENÉE SPICER

rspicer@gcgcre.com | 720.476.5226