

## EXECUTIVE SUMMARY



### OFFERING SUMMARY

Sale Price:	\$449,000
Building Size:	5,200 SF
Lot Size:	44,585 SF
Price / SF:	\$86.35
Year Built:	1980
Zoning:	UC

### PROPERTY OVERVIEW

Prime investment or new small business owner/user opportunity in Weatherford, OK. This 5,200 SF building, constructed in 1980, is ideally suited for Industrial and Flex Space investors or owner/users. Zoned UC, it offers versatile potential for a range of business operations. With a strategic location in Weatherford, this property provides convenient access to major transportation routes and industrial centers. The building's robust structure and favorable zoning present an exceptional foundation for a wide array of commercial ventures.

### PROPERTY HIGHLIGHTS

- 5,200 SF building
- Built in 1980
- Zoned UC
- 10 Minutes from I-40
- Convenient access
- 80X47 Shop/Warehouse
- Four (4) Offices
- Two (2) Fenced Yards
- Outdoor Dock
- Two (2) 14ft Overhead Grade Level Doors

### ERICH MASSAD

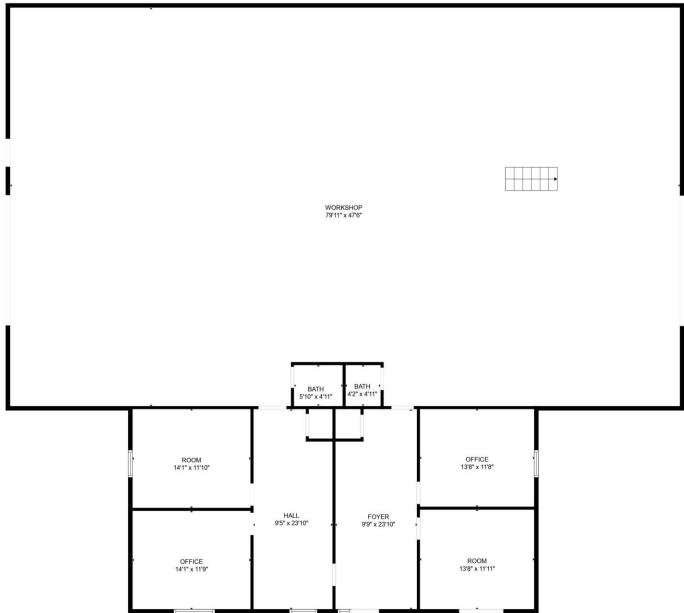
405.620.5638  
erich@creekcre.com



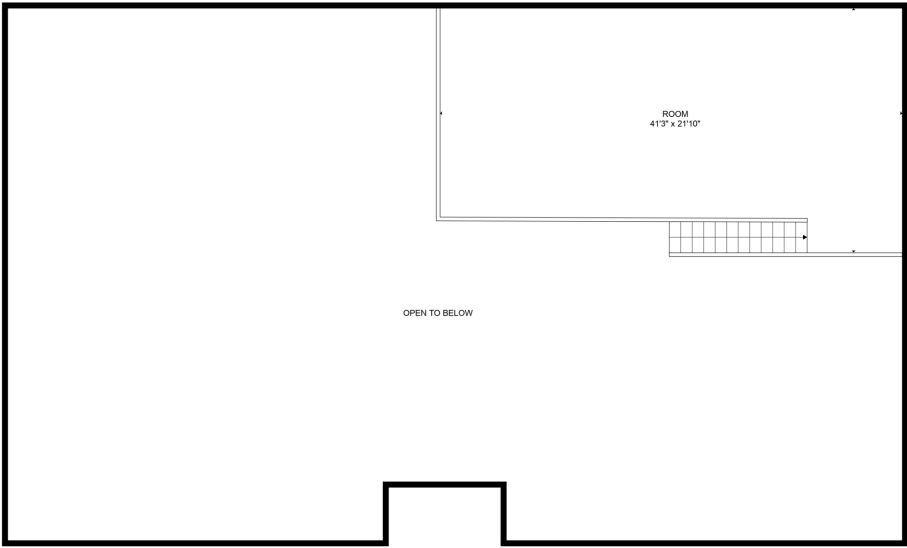
## ADDITIONAL PHOTOS



SITE PLANS



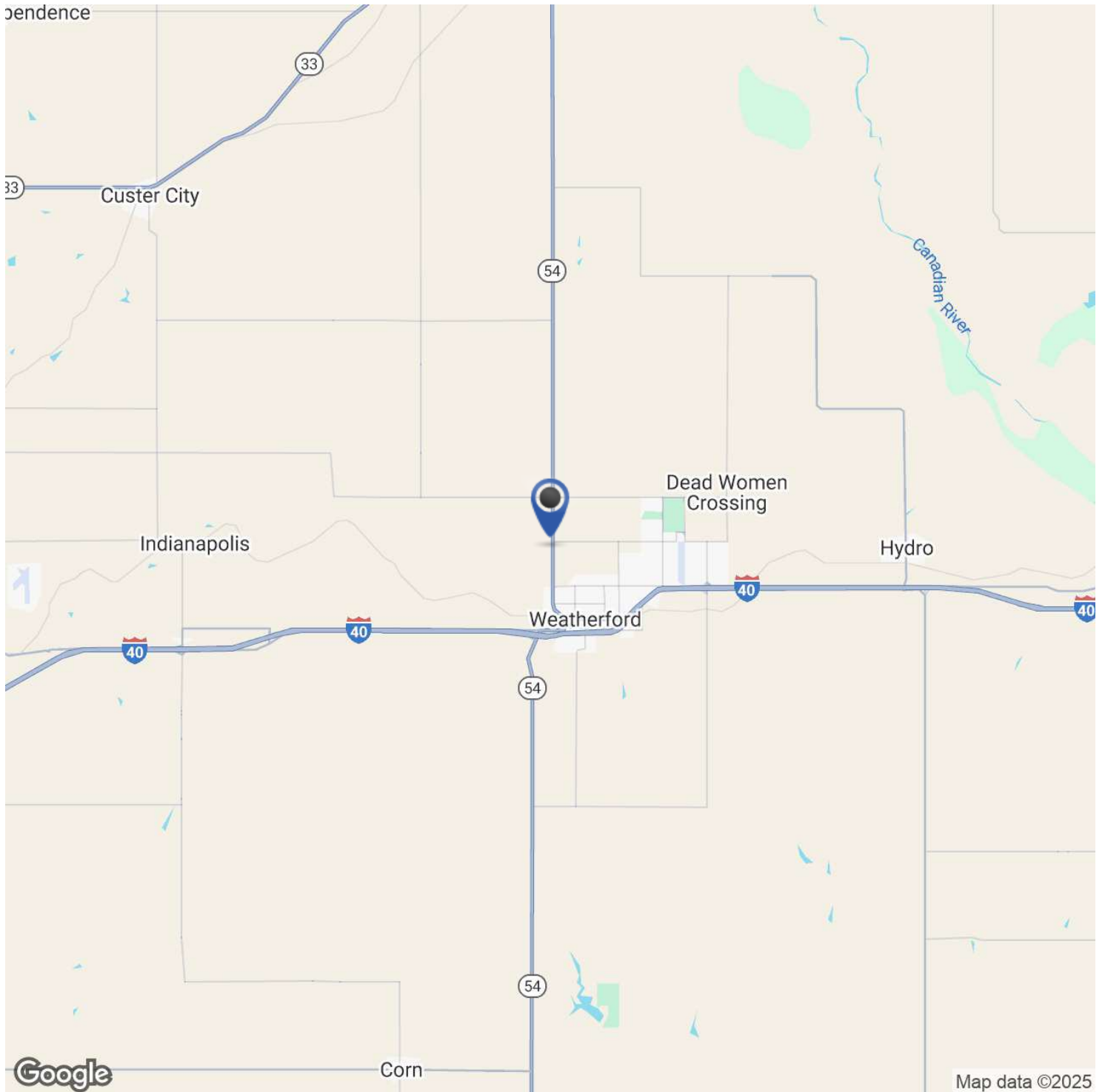
FLOOR PLAN CREATED BY CUBICASA APP. MEASUREMENTS DEEMED HIGHLY RELIABLE BUT NOT GUARANTEED.



FLOOR PLAN CREATED BY CUBICASA APP. MEASUREMENTS DEEMED HIGHLY RELIABLE BUT NOT GUARANTEED.

ERICH MASSAD  
405.620.5638  
erich@creekcre.com

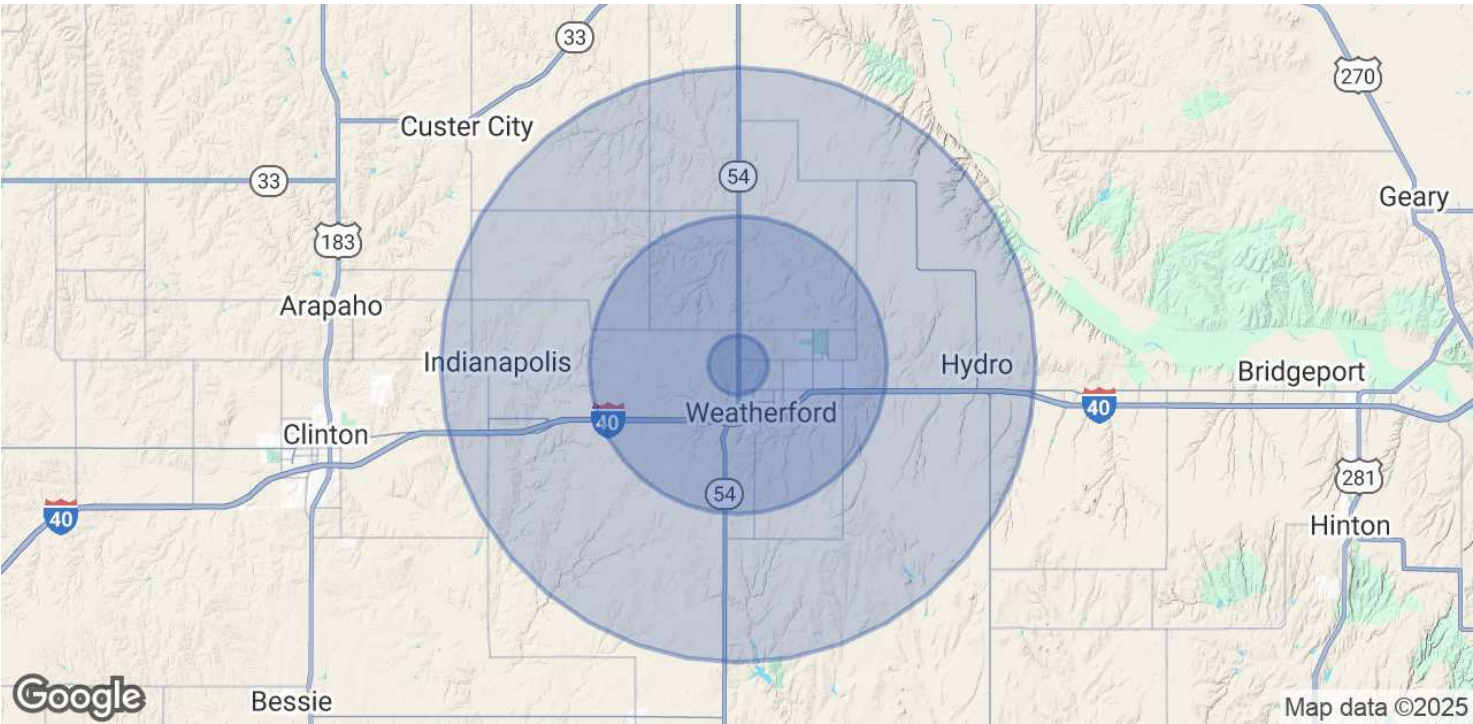
## LOCATION MAP



ERICH MASSAD  
405.620.5638  
erich@creekcre.com



DEMOGRAPHICS MAP & REPORT



POPULATION	1 MILE	5 MILES	10 MILES
Total Population	824	13,897	15,734
Average Age	29	35	35
Average Age (Male)	28	33	34
Average Age (Female)	29	36	36

HOUSEHOLDS & INCOME	1 MILE	5 MILES	10 MILES
Total Households	321	5,316	6,024
# of Persons per HH	2.6	2.6	2.6
Average HH Income	\$64,820	\$94,760	\$94,527
Average House Value	\$216,163	\$274,855	\$270,855

Demographics data derived from AlphaMap

ERICH MASSAD  
405.620.5638  
erich@creekcre.com

## RETAILER MAP

