

Office Building For Lease

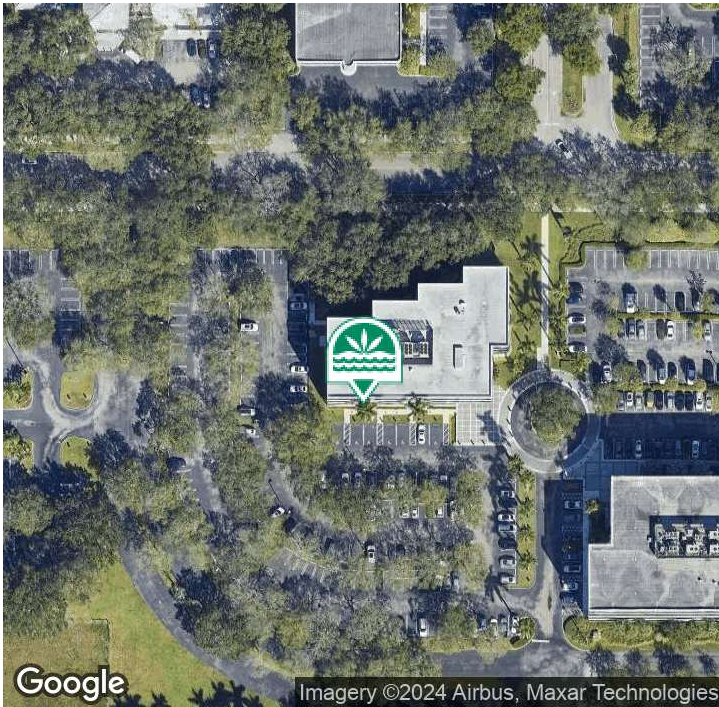
Governors Square: Spessard Holland Building

8000 Governors Square Blvd.

Miami Lakes, FL 33016



SUITE 410



PROPERTY DESCRIPTION

Spessard Holland is a 4-story multi-tenant building overlooking Graham Dairy Lake in Miami Lakes Business Park West. Located near the entrance of the business park, this building offers the perfect business location for employees to commute to work and take advantage of the major amenities of the park. Amenities include restaurants, daycare facilities, and Miami Lakes Picnic Park West, all within walking distance of the business park. Parking is available at 4/1000 SF at no charge.

OFFERING SUMMARY

Lease Rate:	\$21.50 SF/yr (NNN)
Cam/Taxes:	\$11.93 / \$2.27
Available SF:	1,809 SF
Building SF:	53,115 SF

For More Information Contact:

Philip Wyllie

Director of Leasing

954.257.7953

philipw@grahamcos.com

Office Building For Lease

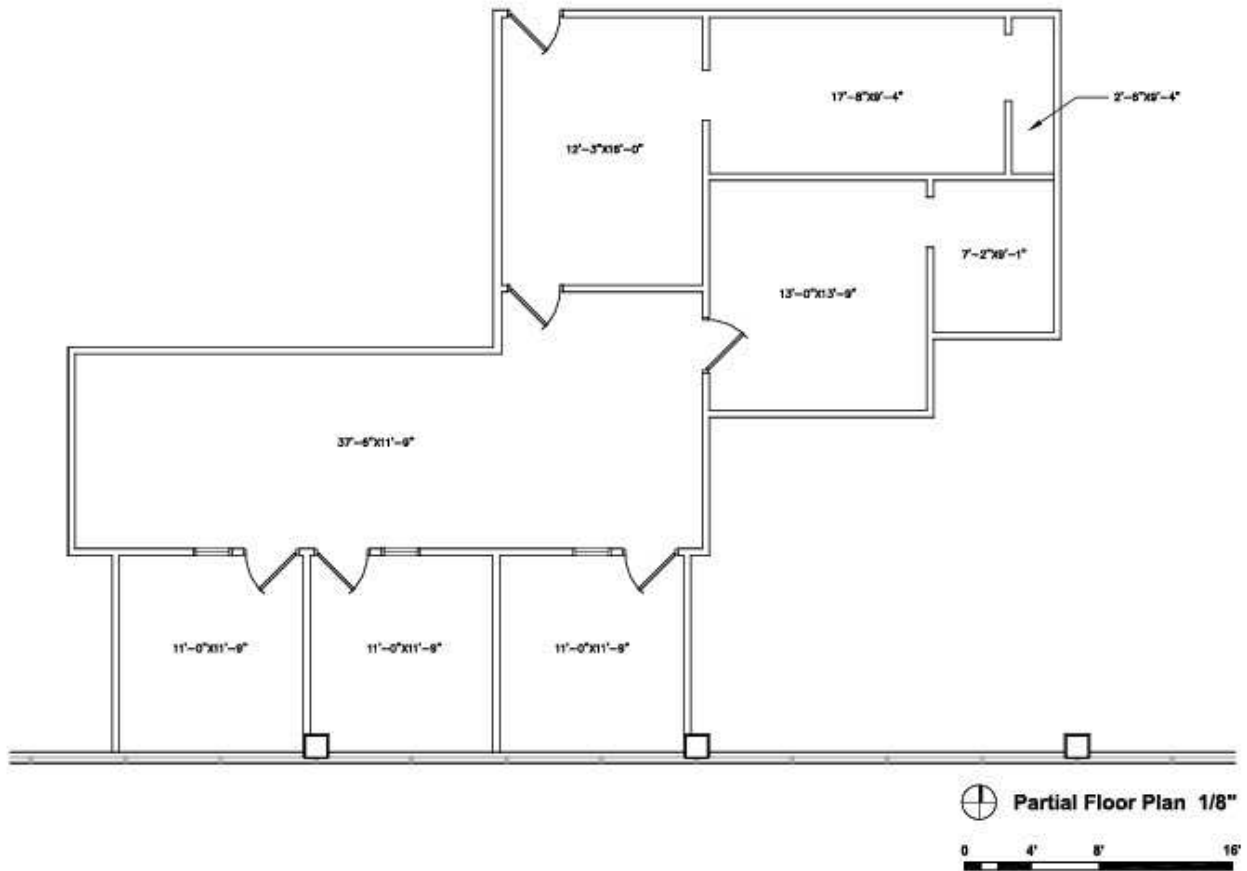
Governors Square: Spessard Holland Building

8000 Governors Square Blvd.

Miami Lakes, FL 33016



FLOOR PLANS



Forbes Architects

4565 Ponce de Leon Boulevard, Suite 100
Coral Gables, Florida 33148
Florida Registration No. AA-F000104
FAB 11002 1D-24-11

Spessard Holland Building

Suite 410

The Graham Companies

6843 Main Street
Miami Lakes, FL 33014

For More Information Contact:

Philip Wyllie

Director of Leasing

954.257.7953

philipw@grahamcos.com

Office Building For Lease

Governors Square: Spessard Holland Building

8000 Governors Square Blvd.

Miami Lakes, FL 33016



ADDITIONAL PHOTOS



For More Information Contact:

Philip Wyllie

Director of Leasing

954.257.7953

philipw@grahamcos.com