

H & H Medical Building

1835 E High St

Medical Office Building

1835 E High Street
Springfield, OH 45505
www.cbre.com/columbus

2,312 - 4,694 SF Available



Medical Office Building

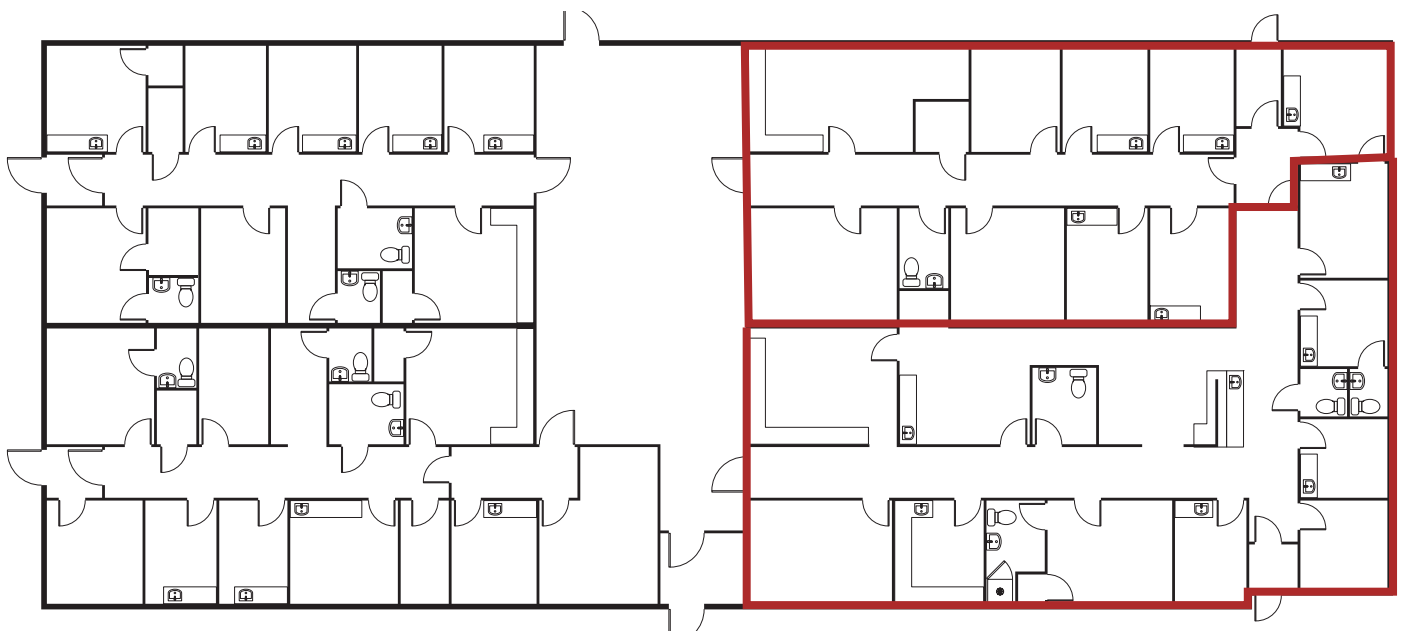
2,312 - 4,694 SF Available

- Base Rent: \$10.00 NNN
- CAM: \$4.00 per SF
- Two Suites Available
 - Suite 3: 2,312 SF
 - Suite 4: 2,382 SF
- Minutes from Downtown Springfield



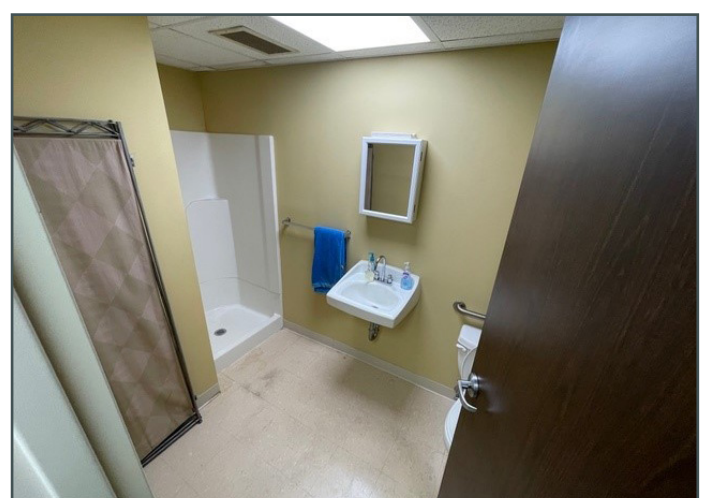
H & H Medical Building

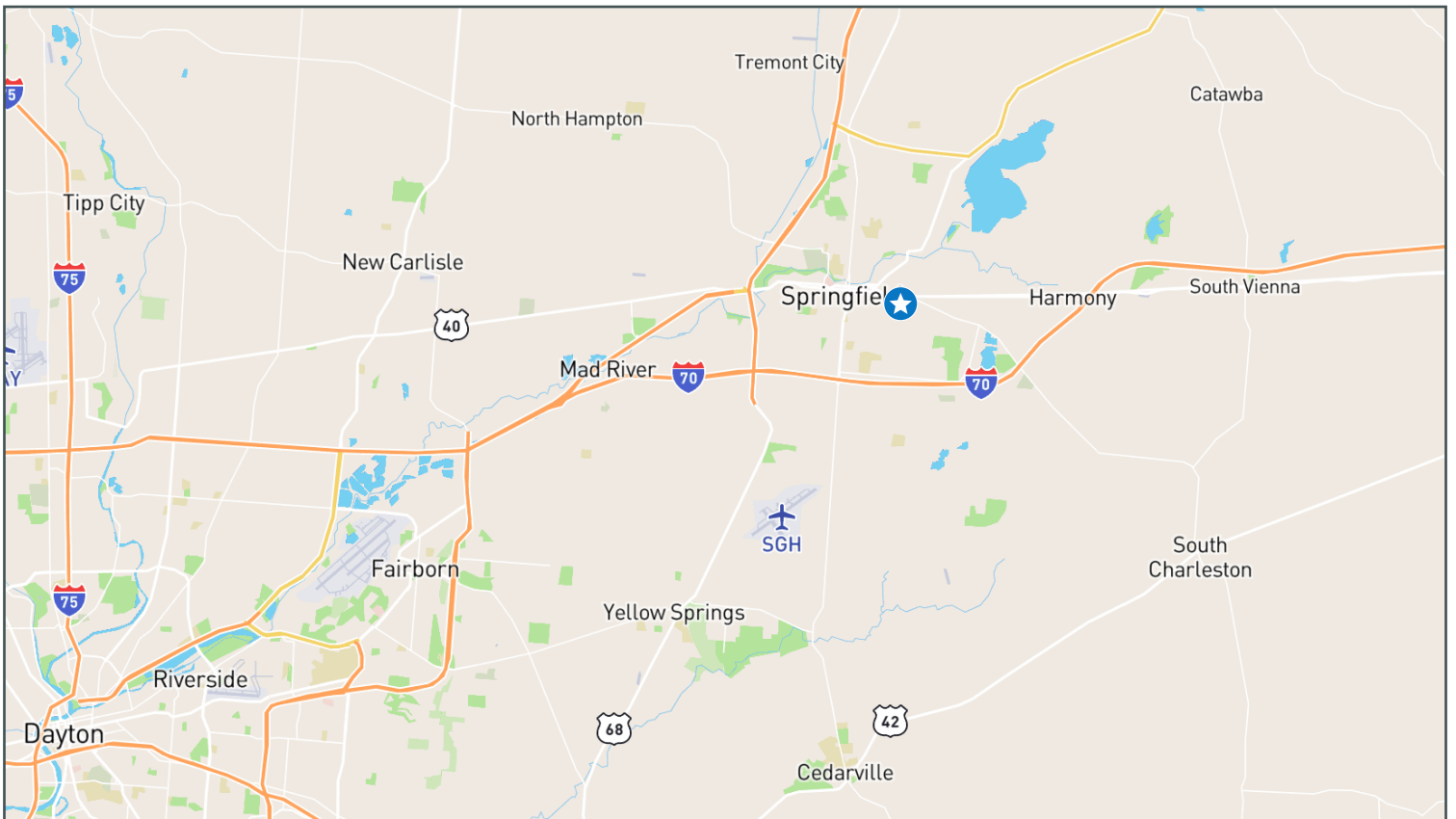
Suite 4- 2,382 SF



Suite 3- 2,312 SF

For Lease





Contact Us

Patrick Hewitt

Vice President
+1 937 641 0419
patrick.hewitt@cbre.com

Molly Leach

Senior Vice President
+1 614 430 5022
molly.leach@cbre.com

© 2024 CBRE, Inc. All rights reserved. This information has been obtained from sources believed reliable, but has not been verified for accuracy or completeness. You should conduct a careful, independent investigation of the property and verify all information. Any reliance on this information is solely at your own risk. CBRE and the CBRE logo are service marks of CBRE, Inc. All other marks displayed on this document are the property of their respective owners, and the use of such logos does not imply any affiliation with or endorsement of CBRE. Photos herein are the property of their respective owners. Use of these images without the express written consent of the owner is prohibited.

