

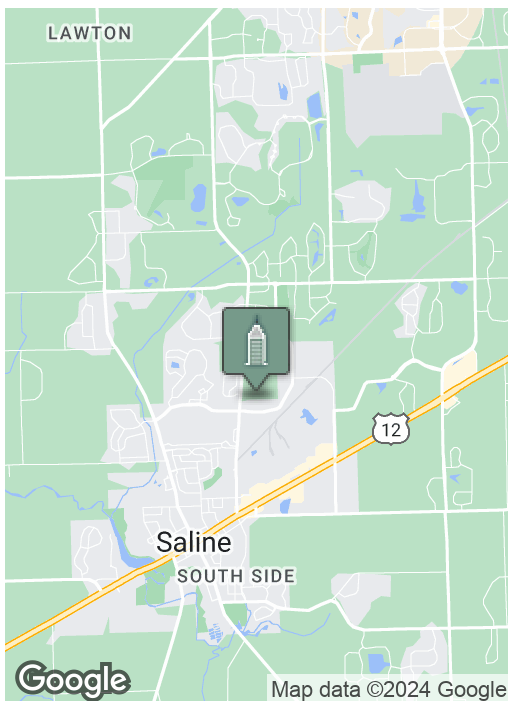
Redies Business Park - Office

905 WOODLAND DRIVE E, SALINE, MI 48176



Swisher
COMMERCIAL

FOR LEASE



SUMMARY

Lease Rate:

\$12.00 SF/yr
Gross - Includes Utilities

Office SF:

6,008 SF

Zoning:

I-2 (General Industrial)

PROPERTY HIGHLIGHTS

- City of Saline - REDIES Business Park
- Fully renovated multi-tenant office & industrial building
- 6,008 SF office available
- Ample parking
- Located west of Michigan Avenue (US-12)

***Building
relationships.***

208 East Washington Street Ann Arbor, MI 48104

734.663.0501

Tony Caprarese

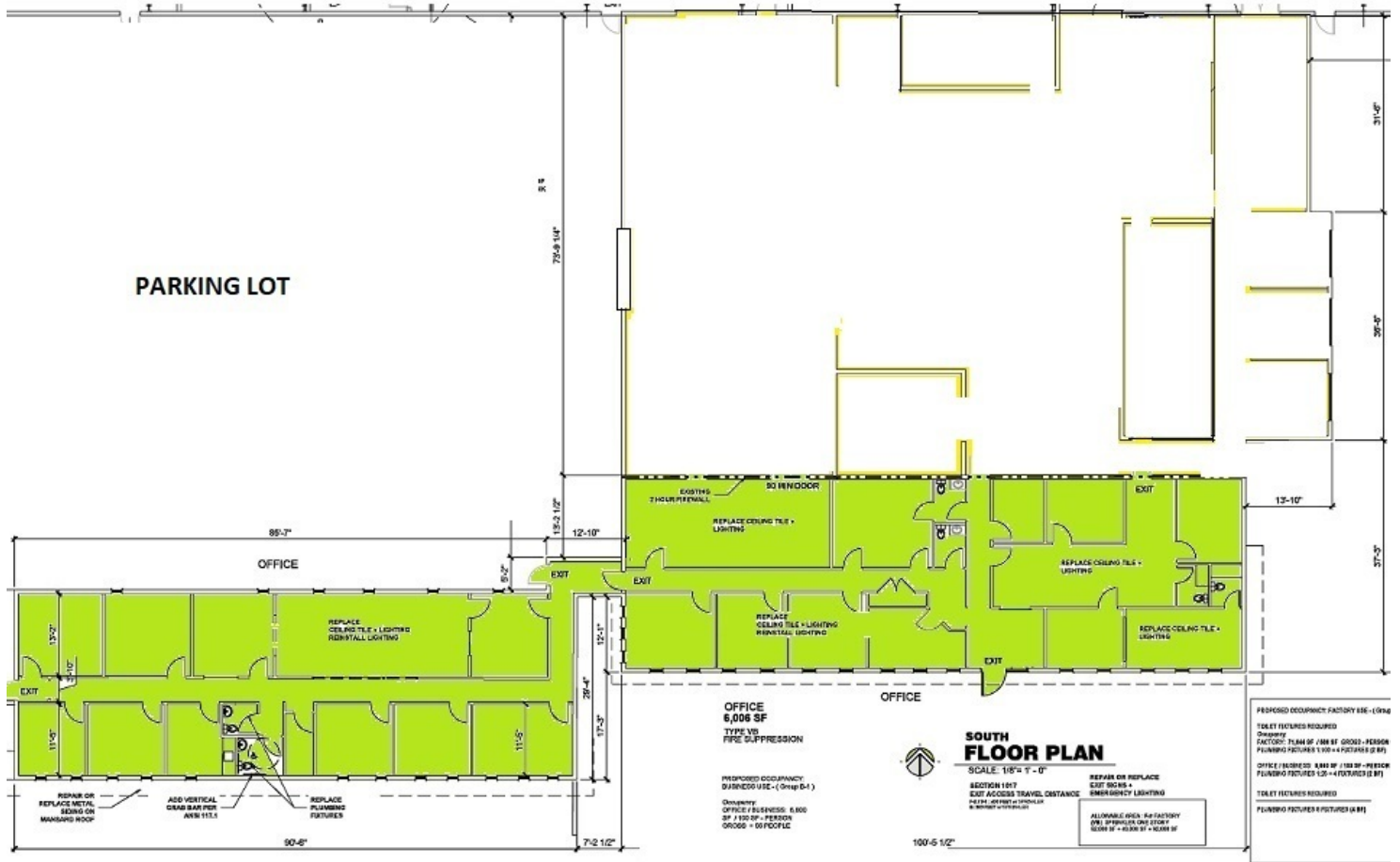
734.904.3521

TONYCAP@SWISHERCOMMERCIAL.COM

SWISHERCOMMERCIAL.COM

Office for Lease

905 WOODLAND DRIVE E, SALINE, MI 48176



AVAILABLE for LEASE

OFFICE 6,008 SF

Building relationships.

208 East Washington Street Ann Arbor, MI 48104

734.663.0501

Tony Caprrese

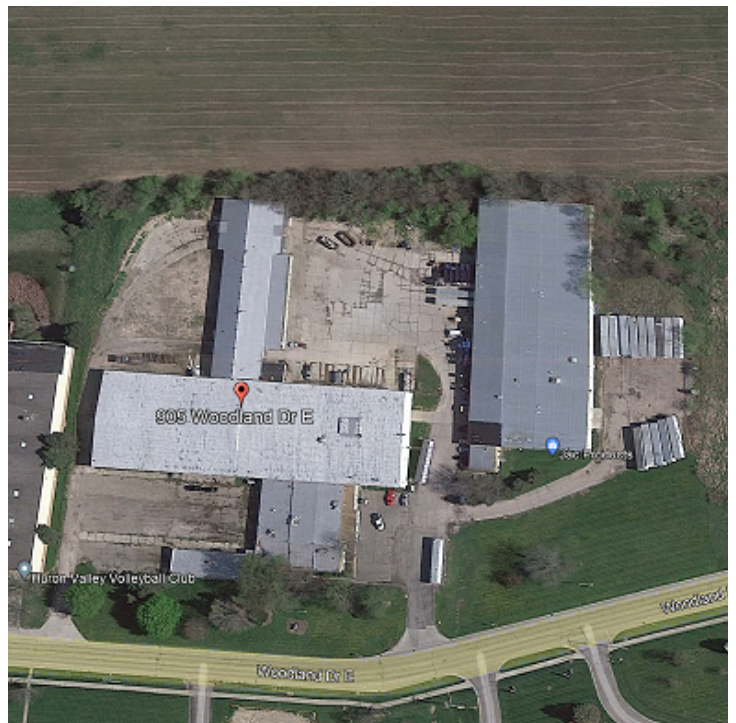
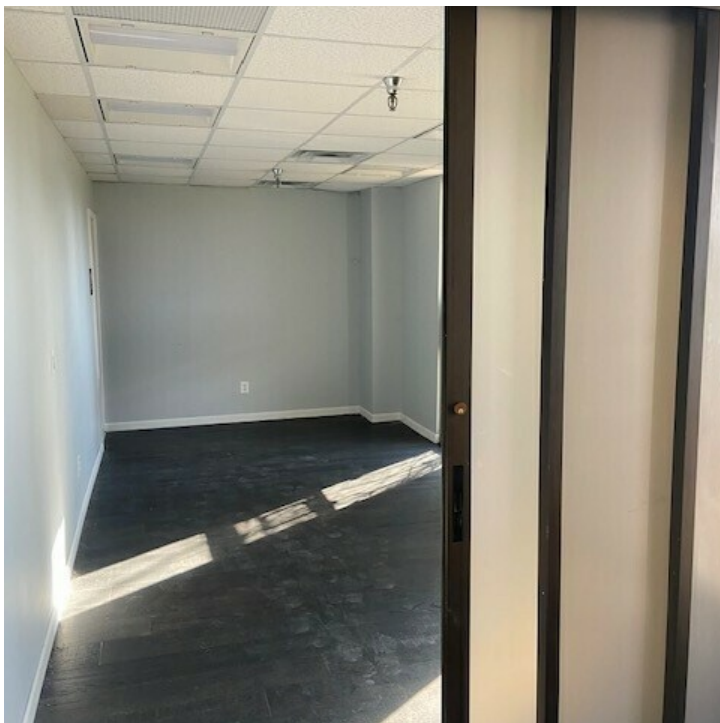
734.904.3521

TONYCAPR@SWISHERCOMMERCIAL.COM

SWISHERCOMMERCIAL.COM

Office for Lease

905 WOODLAND DRIVE E, SALINE, MI 48176



***Building
relationships.***

208 East Washington Street Ann Arbor, MI 48104

734.663.0501

Tony Caprrese

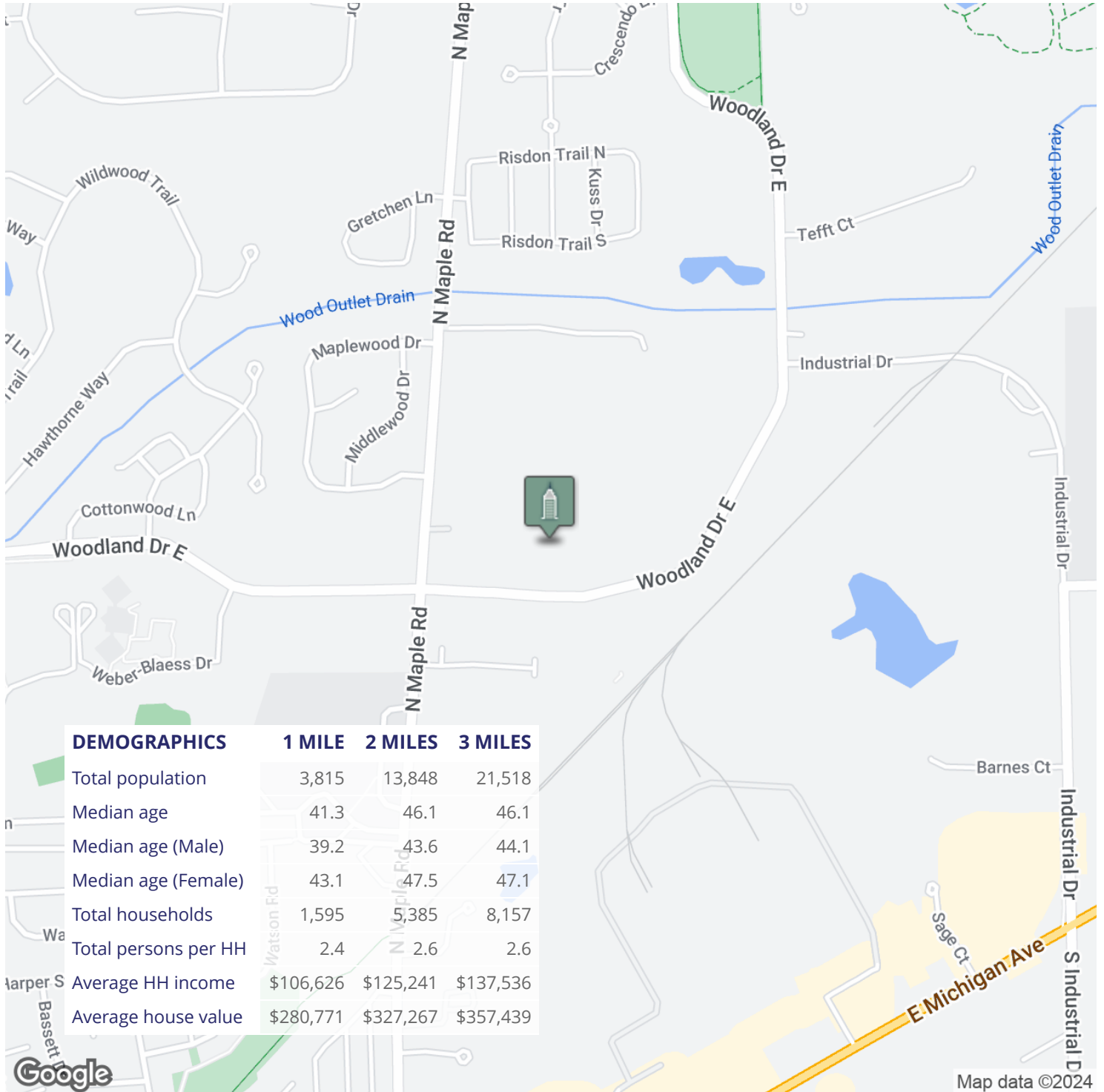
734.904.3521

TONY@SWISHERCOMMERCIAL.COM

SWISHERCOMMERCIAL.COM

Office for Lease

905 WOODLAND DRIVE E, SALINE, MI 48176



Building relationships.

208 East Washington Street Ann Arbor, MI 48104

734.663.0501

Tony Caprrese

734.904.3521

TONY@SWISHERCOMMERCIAL.COM

SWISHERCOMMERCIAL.COM