

LEHI HERITAGE NEIGHBORHOOD LAND AUCTION

2929 N GILBERT RD, MESA, AZ 85203



Beth Jo Zeitzer
CEO - Designated Broker
602.319.1326
bjz@roiproperties.com

Jake Vice
Commercial Associate
480.273.0212
jvice@roiproperties.com

Tommy Moore
Commercial Associate
602.397.4886
tmoore@roiproperties.com

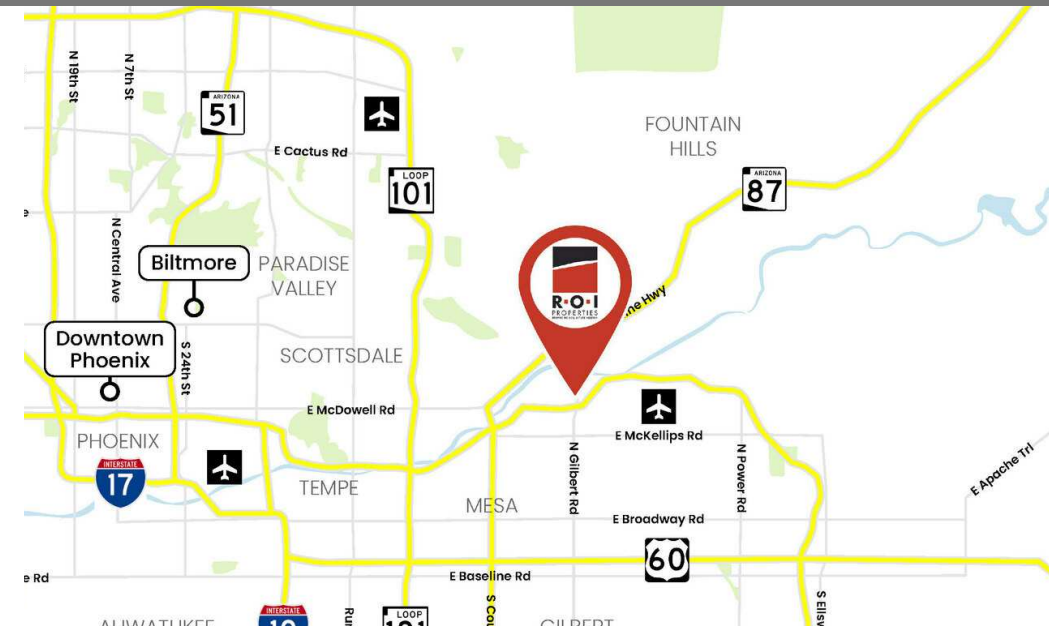
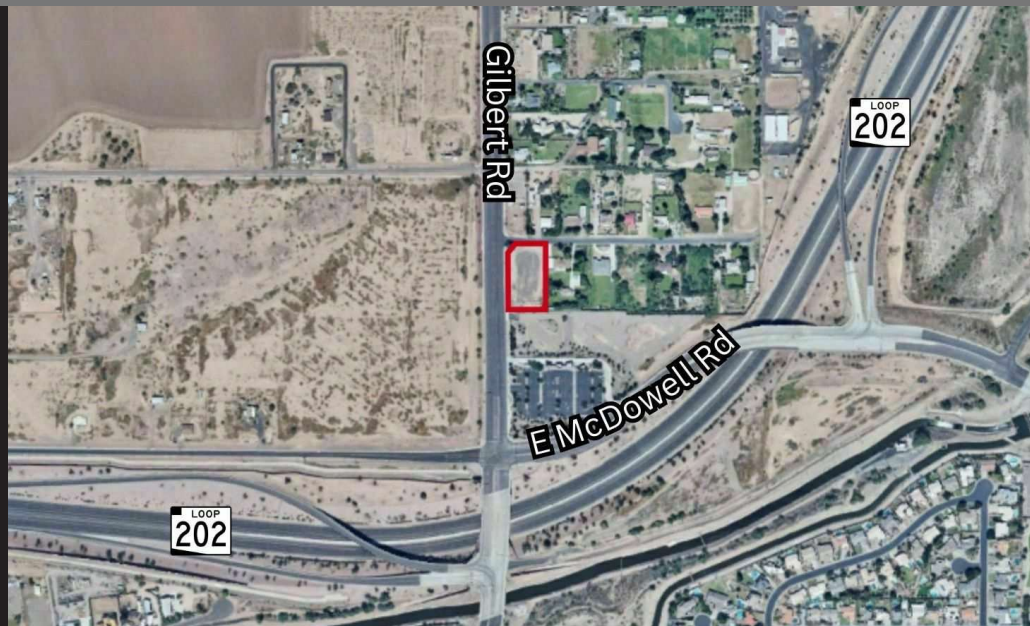
R.O.I. Properties
3333 E Camerlback Rd., Ste 252
Phoenix, AZ 85018
www.roiproperties.com



MCDOT AUCTION - 1.229 AC, MESA

2929 N GILBERT RD, MESA, AZ 85203

FOR SALE



OFFERING SUMMARY

Open Bid:	\$350,000
Address:	2929 N Gilbert, Mesa, AZ 85203
APN:	141-03-035
Lot Size:	1.23 Acres
Zoning:	R-43

PROPERTY OVERVIEW

This is a 1.229-acre lot located in the Lehi Heritage Neighborhood of Mesa, AZ, at the southeast corner of Gilbert Rd and E Oasis St. Conveniently accessible less than a quarter mile north of Loop-202, this vacant lot presents a fantastic opportunity to build your dream home in a vibrant and rapidly growing area.

PROPERTY HIGHLIGHTS

- Lehi Heritage Neighborhood
- Serene Area in Growing City
- Conveniently Located Near Loop 202

BETH JO ZEITZER

602.319.1326
bjz@roiproperties.com

JAKE VICE

480.273.0212
jvice@roiproperties.com

TOMMY MOORE

602.397.4886
tmoore@roiproperties.com

R.O.I. PROPERTIES

3333 E. Camelback RD | Suite 252 | Phoenix, AZ 85018
T: 602.319.1326 | F: 602.794.6389

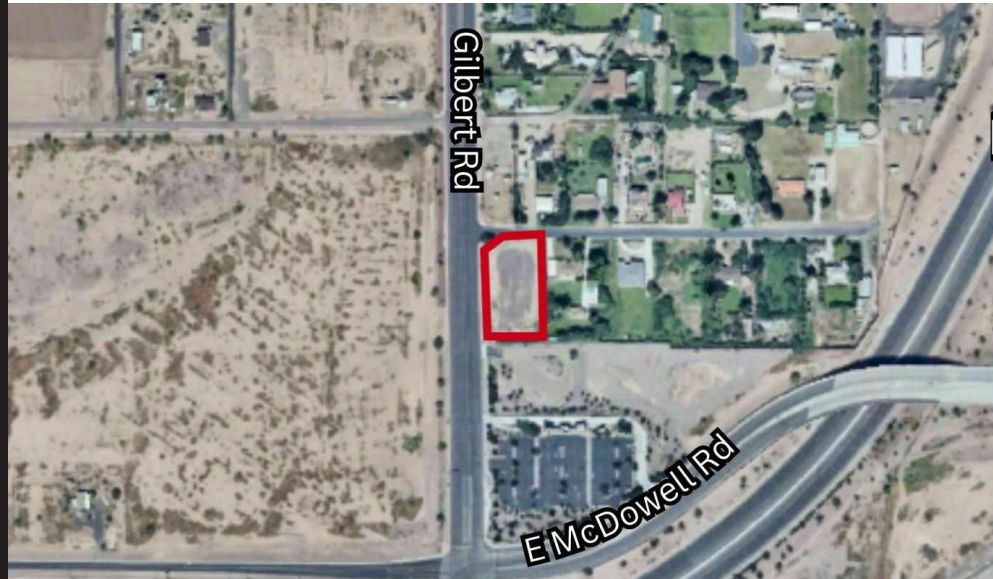
www.roiproperties.com



MARICOPA COUNTY LAND SALES PROCESS

2929 N GILBERT RD, MESA, AZ 85203

FOR SALE



Step 1: Auction Request Form

Bid Package will be prepared with details of the subject property requirements and terms and conditions of the sale.

Step 2: Auction Day -

- Auction Deposit: \$35,000 + \$2,057 (Fee Reimbursements) – Cashier's Check
- Date: April 28, 2025 @ 12pm
- Initial Bid: \$350,000

Step 3: Finalize the Purchase

- Successful bidder responsible for appraisal cost + half of title report at close of escrow
- Overpayment of fee reimbursement will be applied towards purchase price
- Escrow typically closes between 90 to 120 days from auction date.

BETH JO ZEITZER

602.319.1326
bjz@roiproperties.com

JAKE VICE

480.273.0212
jvice@roiproperties.com

TOMMY MOORE

602.397.4886
tmoore@roiproperties.com

R.O.I. PROPERTIES

3333 E. Camelback RD | Suite 252 | Phoenix, AZ 85018
T: 602.319.1326 | F: 602.794.6389

www.roiproperties.com



DEMOGRAPHIC SUMMARY

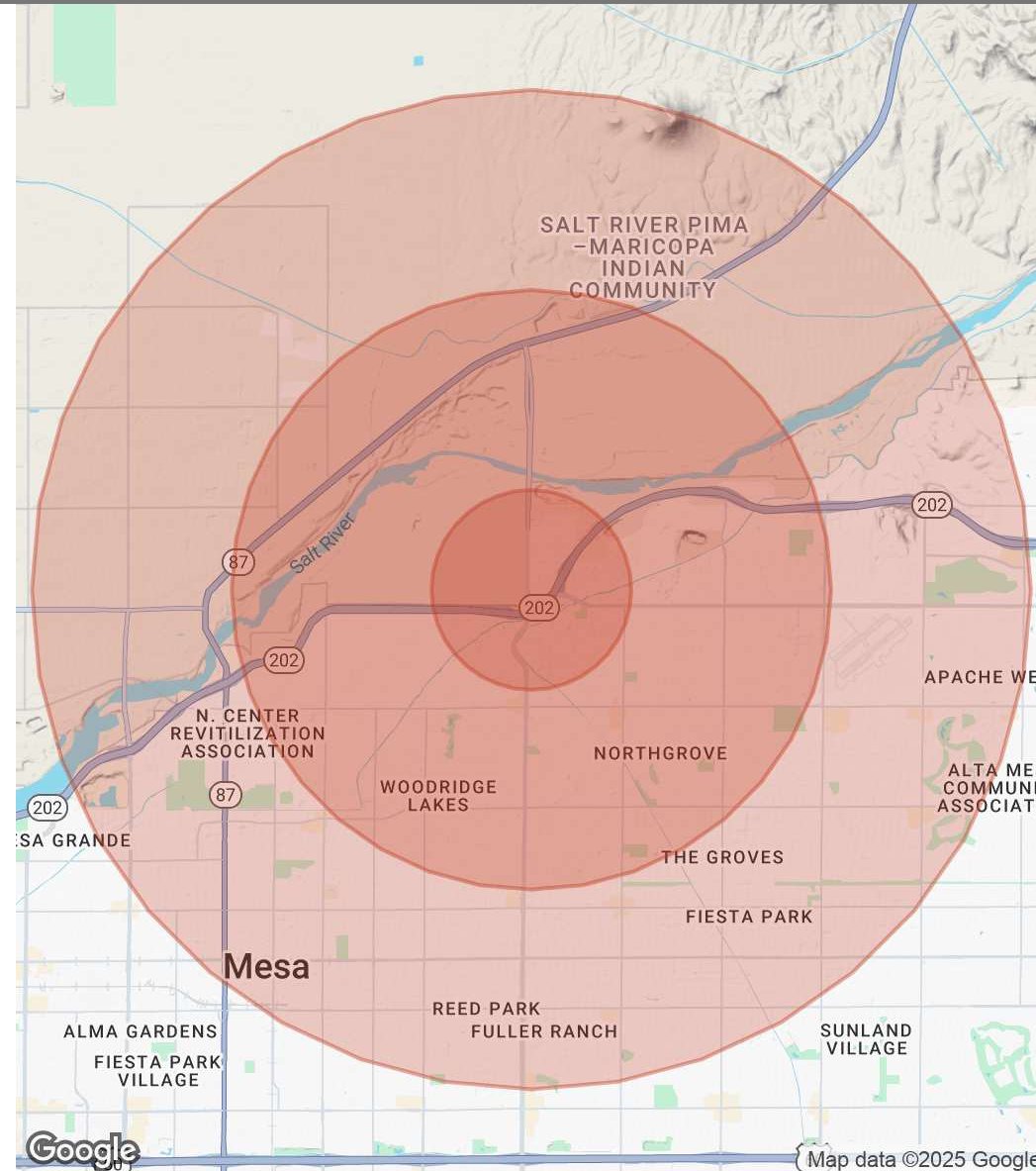
2929 N GILBERT RD, MESA, AZ 85203

FOR SALE

POPULATION	1 MILE	3 MILES	5 MILES
Total Population	4,773	57,336	203,522
Average Age	39	38	39
Average Age (Male)	38	37	38
Average Age (Female)	39	39	40

HOUSEHOLDS & INCOME	1 MILE	3 MILES	5 MILES
Total Households	1,426	19,241	74,909
# of Persons per HH	3.3	3	2.7
Average HH Income	\$190,112	\$133,674	\$97,652
Average House Value	\$727,887	\$561,622	\$433,851

Demographics data derived from AlphaMap



BETH JO ZEITZER

602.319.1326
bjz@roiproperties.com

JAKE VICE

480.273.0212
jvice@roiproperties.com

TOMMY MOORE

602.397.4886
tmoore@roiproperties.com

R.O.I. PROPERTIES

3333 E. Camelback RD | Suite 252 | Phoenix, AZ 85018
T: 602.319.1326 | F: 602.794.6389

www.roiproperties.com

