

Highlights:

- 1,250 SF (25' x 50') - Ground Floor
- 1,000 SF (50' x 20') - Basement
- 13' Ceiling Height
- Glass Storefront
- Center Skylight
- Split A/C System
- Bedford Ave  Subway Station

NEARBY



Lease Price: Upon Request

Vincent Lopez
Exclusive Agent:
917-523-5772
vlopez@krgnyc.com

Jacques Wadler
Exclusive Agent:
516-650-1123
jwadler@krgnyc.com



82 NORTH 3RD STREET, WILLIAMSBURG, BROOKLYN

KNICKERBOCKER

REALTY GROUP LLC

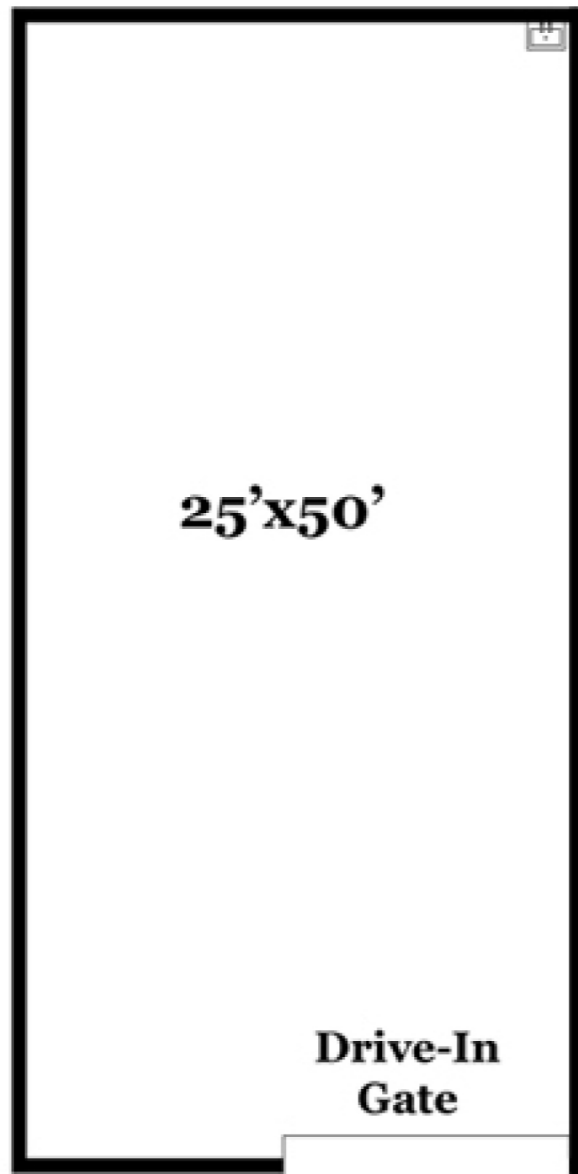
408 SENECA AVENUE | RIDGEWOOD, NY 11385 | 718-928-0300 | WWW.KRGNYC.COM



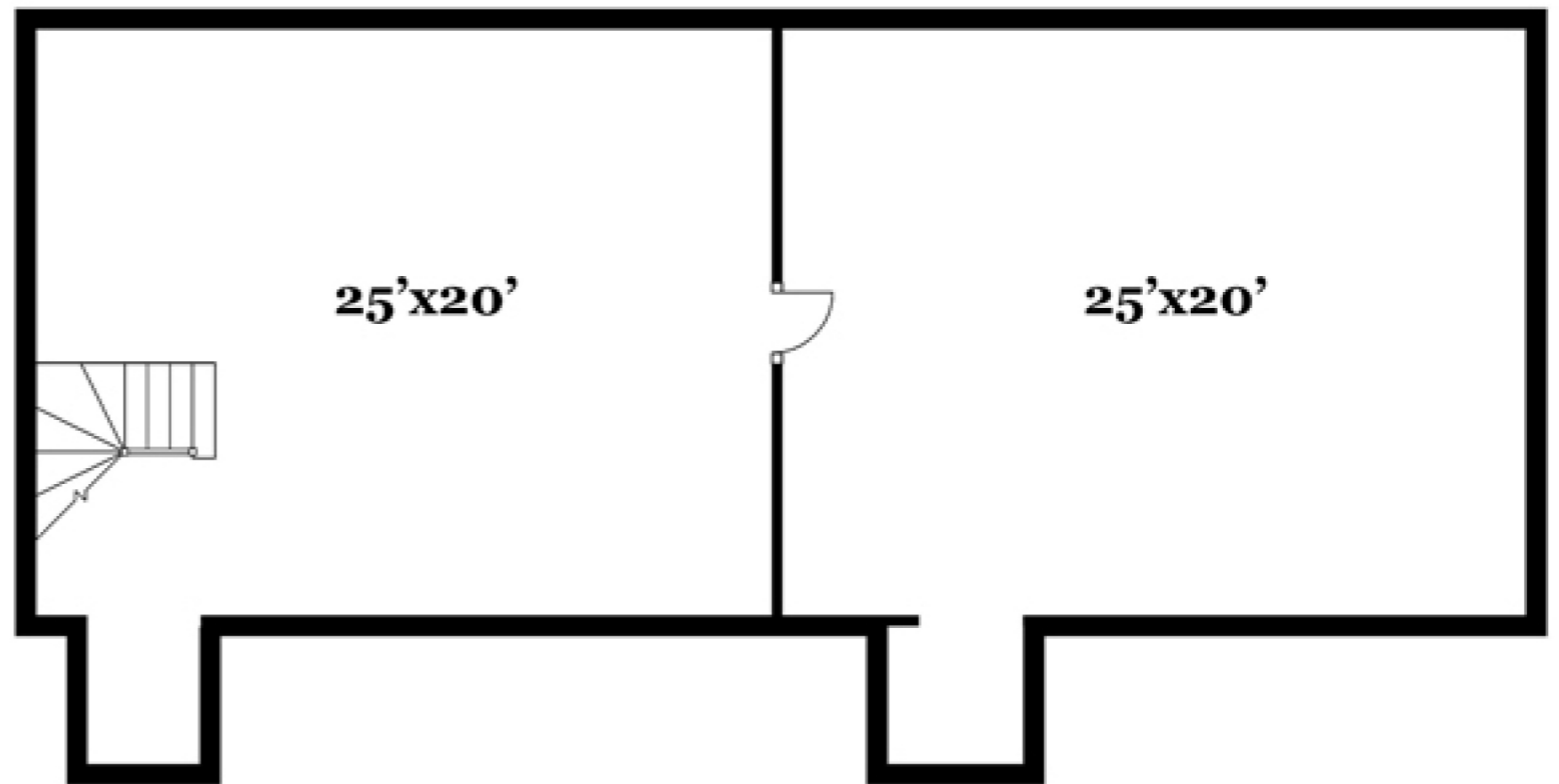
82 NORTH 3RD STREET, WILLIAMSBURG, BROOKLYN

ALL INFORMATION IS FROM SOURCES DEEMED RELIABLE, BUT SUBJECT TO: ERRORS, CHANGES WITHOUT NOTICE, PRIOR SALE OR LEASE, WITHDRAWAL WITHOUT NOTICE. ALL MEASUREMENTS ARE APPROXIMATE

GROUND FLOOR



BASEMENT



82 NORTH 3RD STREET, WILLIAMSBURG, BROOKLYN