

DMC MOBILITY CENTER

S. MAIN ST & BEALE ST, MEMPHIS, TN 38103

FOR LEASE

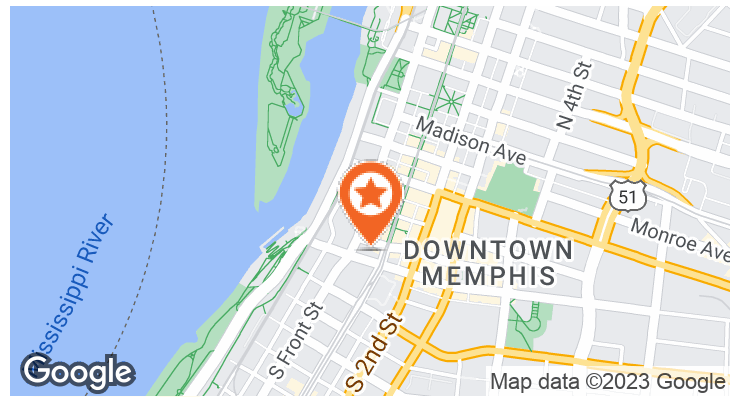


LOCATION DESCRIPTION

\$40 million project in Downtown Memphis on the northwest corner of S. Main Street and Beale Street and adjacent to The Orpheum Theatre, a 2,308-seat venue listed on the National Register of Historic Places

PROPERTY HIGHLIGHTS

- Plans for this project include a 960-stall parking garage with space for bike storage, showers, lockers, electric scooter stalls and ground-floor retail space
- 3,600 SF and 8,500 SF of retail space available For Lease
- Perfect for restaurant or entertainment
- Located where the Main Street Trolley rail line and Beale Street, one of Tennessee's Top Tourism Attractions, meet with heavy foot traffic, high daytime population and thriving downtown residential neighborhoods



DEMOGRAPHICS

	1 MILE	2 MILES	3 MILES
Population	12,704	31,902	67,268
Daytime Population	32,009	66,705	108,396
Households	5,871	14,643	30,032
Average HH Income	\$74,664	\$61,688	\$62,913

TSCG

SHAWN MASSEY, CCIM, CRRP, ALC

shawn.massey@tscg.com
901.334.5702

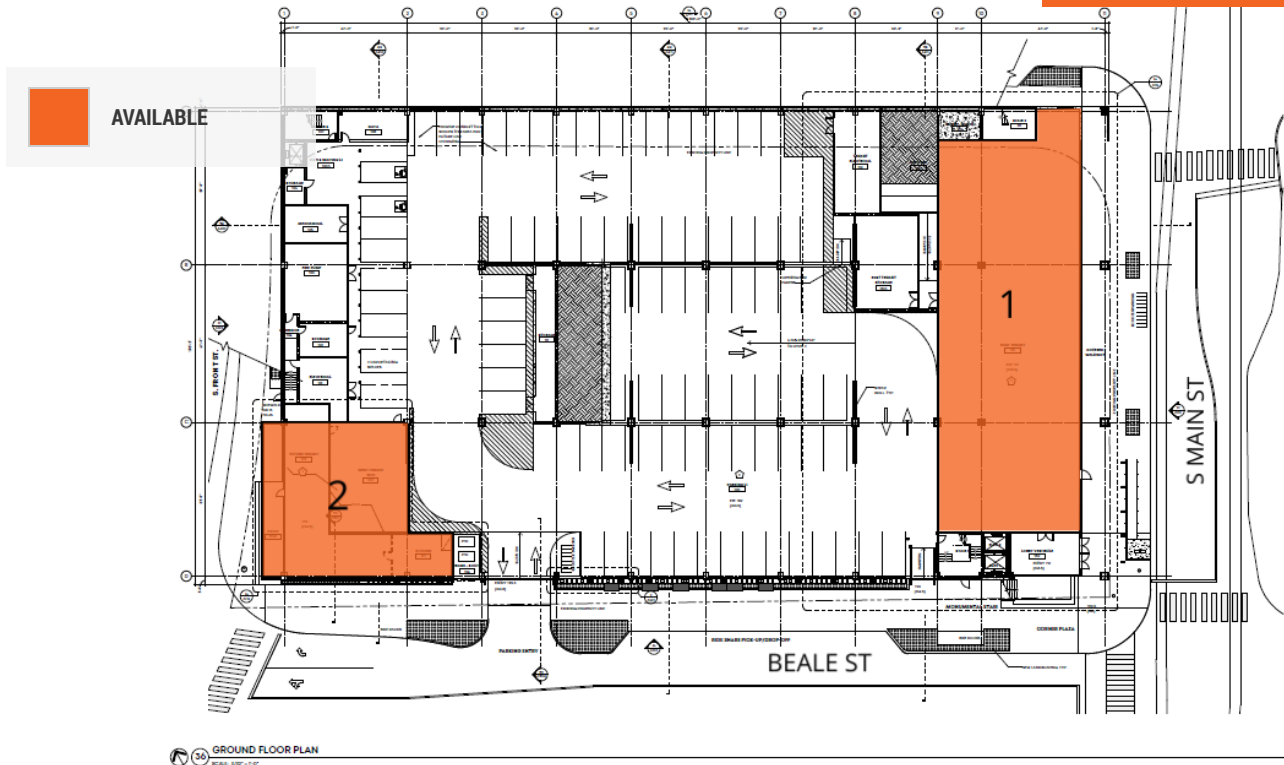
SIDNEY SEALE

sidney.seale@tscg.com
901.252.1039

DMC MOBILITY CENTER

S. MAIN ST & BEALE ST, MEMPHIS, TN 38103

FOR LEASE



SUITE	TENANT NAME	SPACE SIZE
1	Available	8,500 SF
2	Available	3,600 SF



SHAWN MASSEY, CCIM, CRRP, ALC
shawn.massey@tscg.com
901.334.5702

SIDNEY SEALE
sidney.seale@tscg.com
901.252.1039

DMC MOBILITY CENTER

S. MAIN ST & BEALE ST, MEMPHIS, TN 38103

FOR LEASE



SHAWN MASSEY, CCIM, CRRP, ALC

shawn.massey@tscg.com

901.334.5702

SIDNEY SEALE

sidney.seale@tscg.com

901.252.1039

TSCG