



# 3901 Georgia NE

Office Space

Albuquerque, NM - Northeast Heights

3901 Georgia St. NE



Population	17,138	120,651	313,836
Med. Income	\$36,622	\$41,770	\$47,623
Day Population	5,628	93,549	212,330

Please contact us for leasing opportunities



## Available

- Suite A2B | 1,501 SF | \$1,960/Month
- Single-story space with lots of windows



## Surroundings Info

- Popular office complex.
- Two exterior entrances.
- Plenty of on-site parking.
- Locally owned and managed.
- Close to many restaurant options.



### Contact

Vanessa Valadez  
 505.884.3578  
 Vanessa@PetersonProperties.net

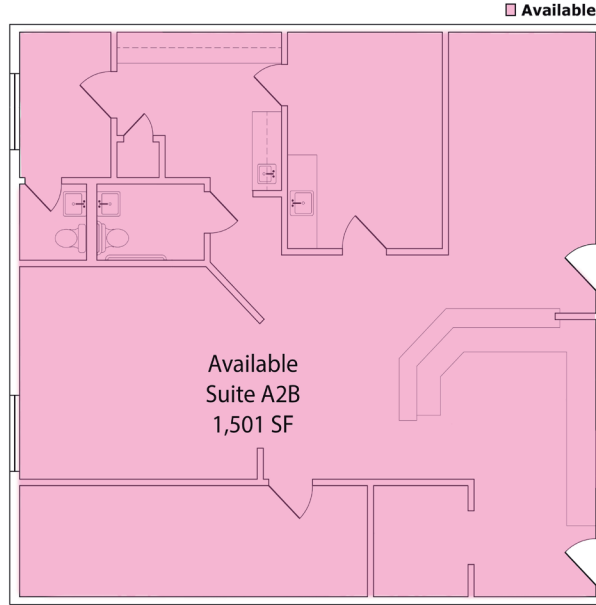
[PetersonProperties.net](http://PetersonProperties.net)

/petersonpropertiesllc

/petersonpropertiesllc

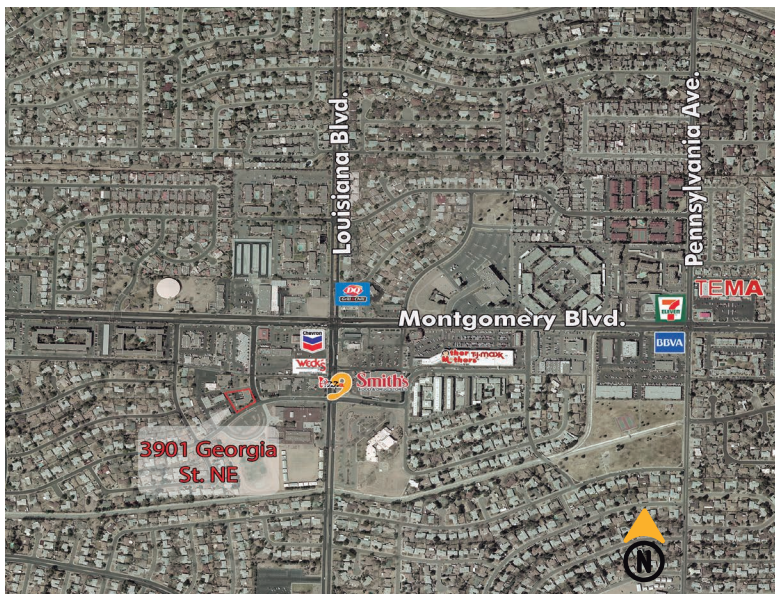
/peterson.properties

### Site Plan



Please contact us for leasing opportunities

### Aerial Map



### Southwest corner of Montgomery & Louisiana Albuquerque, NM



### Contact us

Vanessa Valadez

505.884.3578

Vanessa@PetersonProperties.net

