



VIV

Harry E.

ROBBINS

Associates, INC. Realtor





ABOUT VIV

- Location: Southwest corner of 1st Avenue North and Dr. MLK Jr. Street, St. Pete's EDGE District
- Development: Consists of two 15-story mixed-use buildings.
- Commercial space: Over 15,000 square feet
- Parking: Abundance of on-site parking

ABOUT VIV

- Design: Walkable spaces featuring pathways that connect to main streets
- Amenities: A cozy pocket park equipped with outdoor seating
- Opportunity: Perfect for retail, office, or commercial projects, benefiting from an increasing population and foot traffic
- Comprises around 269 residential units



FOR LEASE
INFORMATION

(941)724.2321

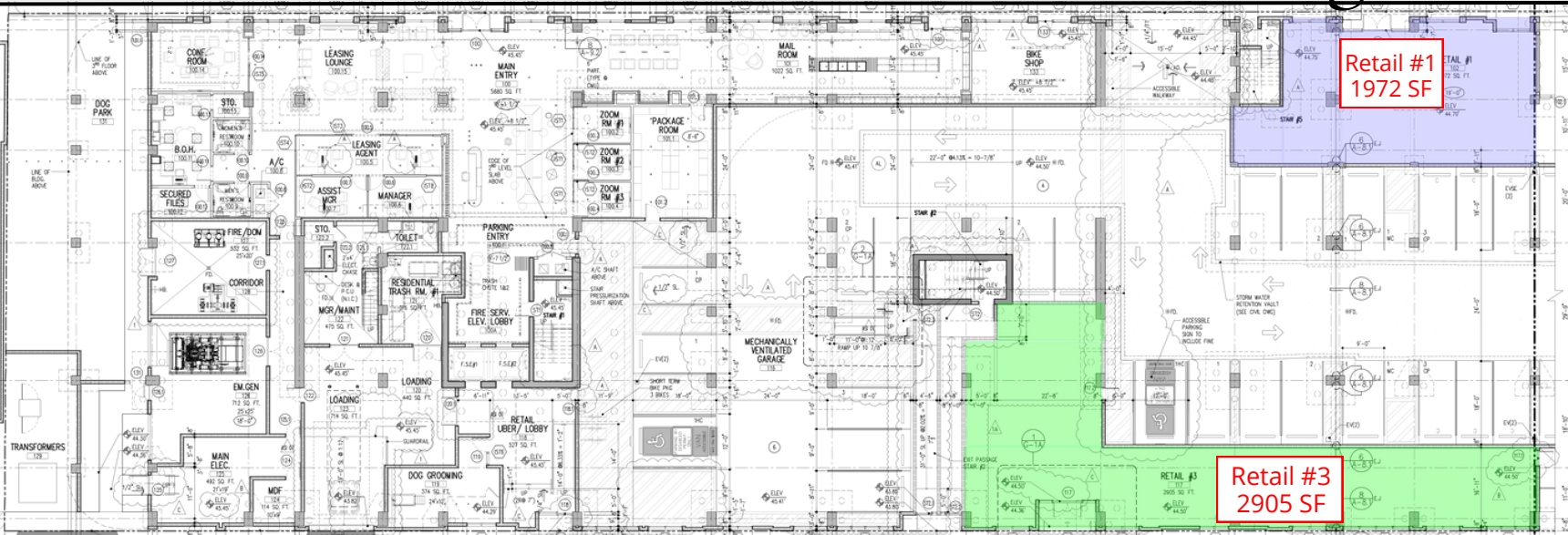
Kevin Robbins

Kevin@RobbinsCommercial.com

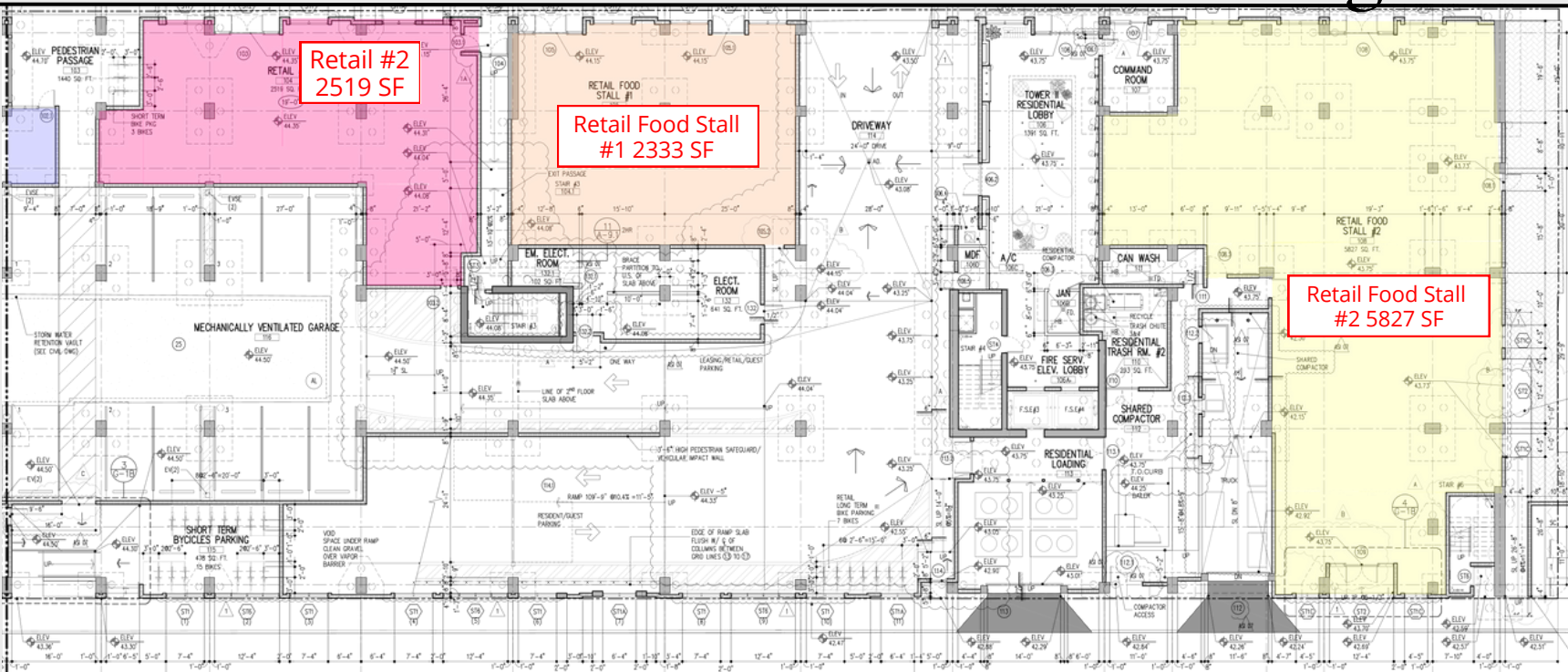


Located at the southwest corner of 1st Avenue North and Dr. MLK Jr. Street in St. Pete's EDGE District, this development features two 15-story mixed-use buildings offering over 15,000 square feet of high-visibility commercial space. Part of a mixed-use project, it includes residential towers and a 355-space parking garage, ensuring convenient parking. The pedestrian-friendly design includes pathways connecting to key streets and a pocket park with outdoor seating, creating a vibrant retail atmosphere. With a growing population and increasing foot traffic, this prime location is perfect for retail, office, or other commercial ventures.

1000 1st Ave N Retail Plan: East Building



1000 1st Ave N Retail Plan: West Building



Harry E. Robbins Associates, Inc
Kevin@RobbinsCommercial.com
 941.924.2346



NOTE: ALL HEIGHTS LISTED ARE MEASURED TO TOP OF ROOF. MAX HEIGHTS ARE MEASURED TO THE TOP OF ARCHITECTURAL FEATURES.

Campbell Park Elementary

Proposed 900 Ave Central Ave 146' (150' MAX)

SUBJECT 1000 1st Ave N 150' (163' MAX)

Baum Hotel ~125'

Tropicana Field

ICON CENTRAL 155' (178' MAX)

Florida Department of Health

8th St N

1st Ave N

1st Ave N

8th St N

4th Ave N

4th Ave N

Dr.M.L.K Jr Street

I- 375

I-375

VIV



Contact
Us

KEVIN ROBBINS
REALTOR®

www.RobbinsCommercial.com

941-924-8346

