

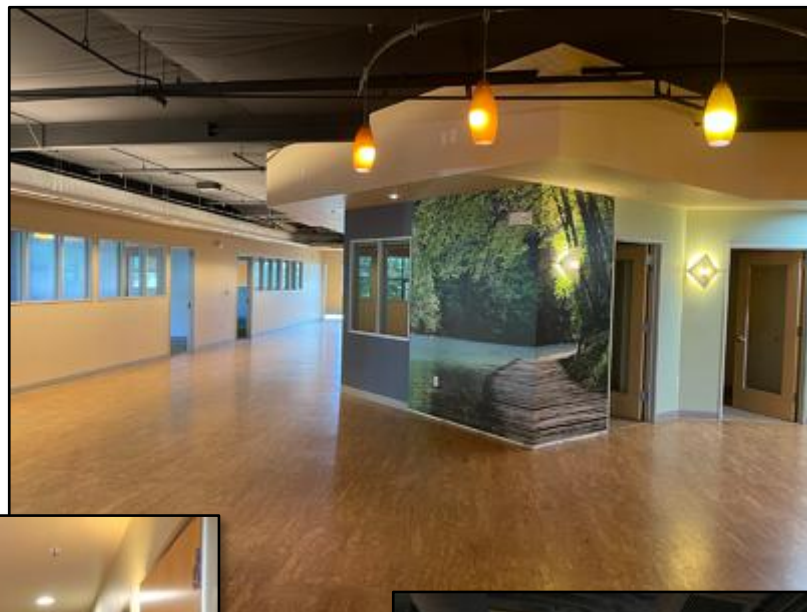
- +/- 21,166 sq. ft., LEED Platinum, Fiber Connected
- Entire Second Floor; Elevator served
- 17 large perimeter offices, operable windows
- +/- 10 private offices; white board walls
- Conference rooms; large kitchen area
- Monument signage; large reciprocal parking
- Multiple restrooms and private restrooms with showers
- Excellent location in the heart of San Luis Obispo's business and tech core
- Lease rate: \$1.70 sq. ft., NNN (\$0.57)



*\*This offering can be combined with separate available suites in the adjacent building: 4111, up to +/- 14,079 sq. ft. Includes: Suite A: +/- 7,566 sq. ft., Suite F: +/- 6,513. ft. For a total of approximately 35,245 sq. ft. within the Campus.*

***“An amenity loaded space  
in tech rich San Luis Obispo”***

## Amenities and work areas





## Amenities and work areas

