



FULL BUILDING AVAILABILITY

86 Hopmeadow Street in Simsbury, Connecticut is a three-story, 39,475 square foot Class A office property located in a corporate campus environment in a beautiful suburban setting.

86 Hopmeadow Street offers modern, high-end finishes and dramatic views of Talcott Mountain. The entire building is available for lease but can also be subdivided into suites as small as 2,000 SF.



For further information, please contact:

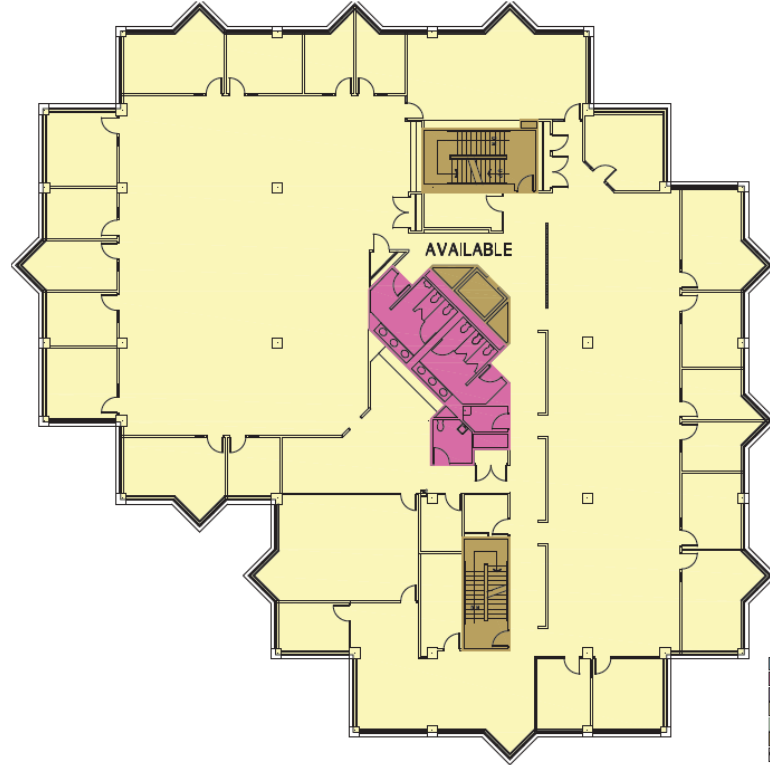
Maury Smith | D 860.327.8304 | C 860.748.2508 | maury.smith@avisonyoung.com

Avison Young | 225 Asylum Street, 16th Floor | Hartford, CT 06103 | T 860.327.8330

86 Hopmeadow Street | Simsbury, CT

BUILDING FEATURES

- Signature office building with excellent Simsbury location on Route 10.
- Magnificent setting with dramatic views of Talcott Mountain.
- 4 per 1,000 parking ratio.
- Located within one mile of Route 44 Retail Corridor.
- Full building currently available.
- Asking Lease Rate of \$20.00 PSF Gross.



**Premier
Location**

Quick access to
I-84, 15 minute
drive into downtown
Hartford.

For further information, please contact:

Maury Smith | D 860.327.8304 | C 860.748.2508 | maury.smith@avisonyoung.com

Avison Young | 225 Asylum Street, 16th Floor | Hartford, CT 06103 | T 860.327.8330

**AVISON
YOUNG**