



Available immediately

- Second floor ideal for medical office and administrative use
- Numerous patient examination rooms with plumbing
- Private restroom (largest unit)
- As is
- Easy Access to I-80 & Garen State Parkway

| | |
|----------------------|-----------|
| Building Size | ±9,314 SF |
|----------------------|-----------|

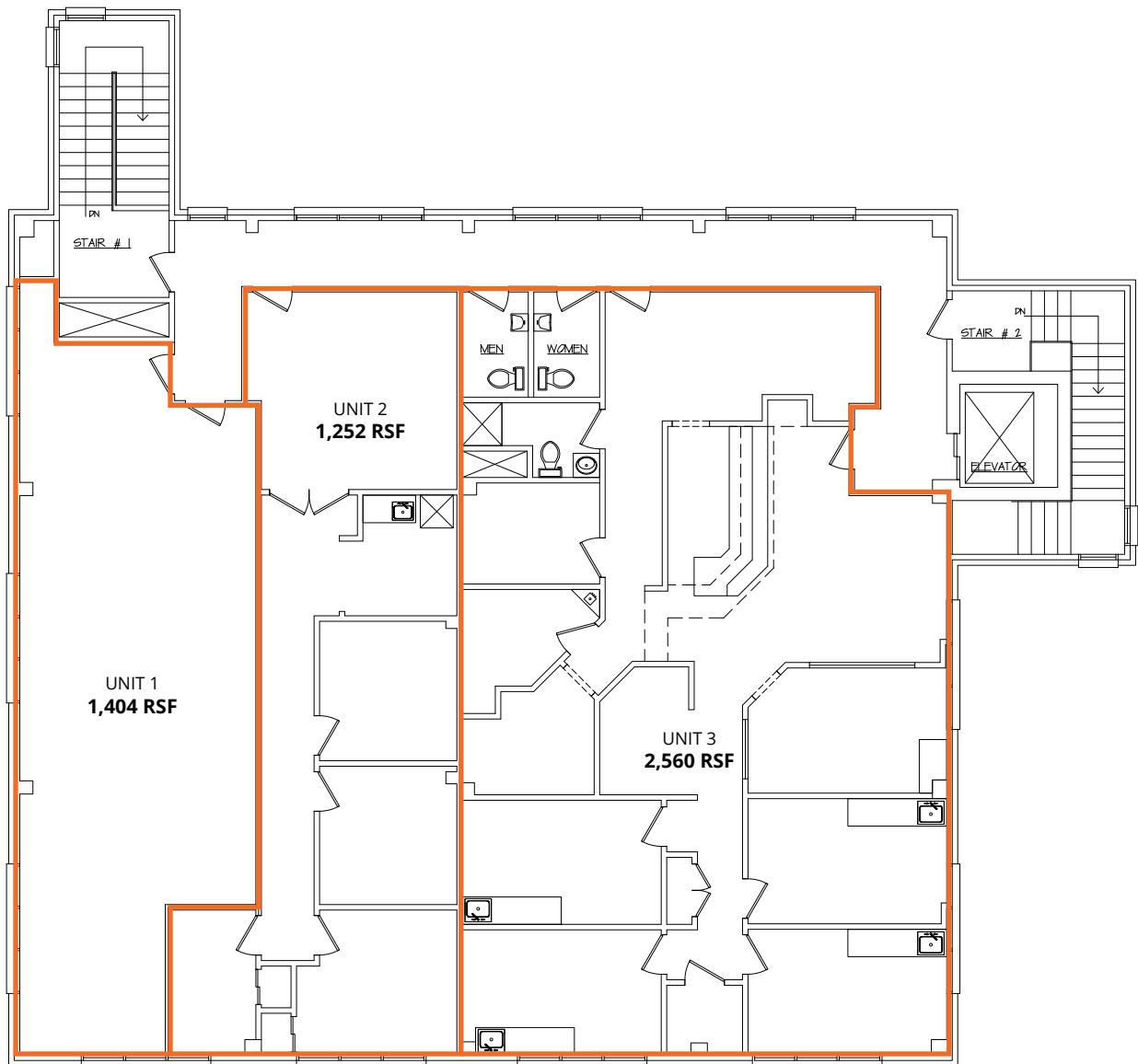
| | |
|------------------------|---|
| Available Space | 2nd floor – 1,252 RSF 2nd floor – 1,404 RSF 2nd floor – 2,560 RSF |
|------------------------|---|

| | |
|--------------------|-------------------------------------|
| Asking Rent | \$16.00/PSF (FULL SERVICE GROSS) |
|--------------------|-------------------------------------|

For more information:

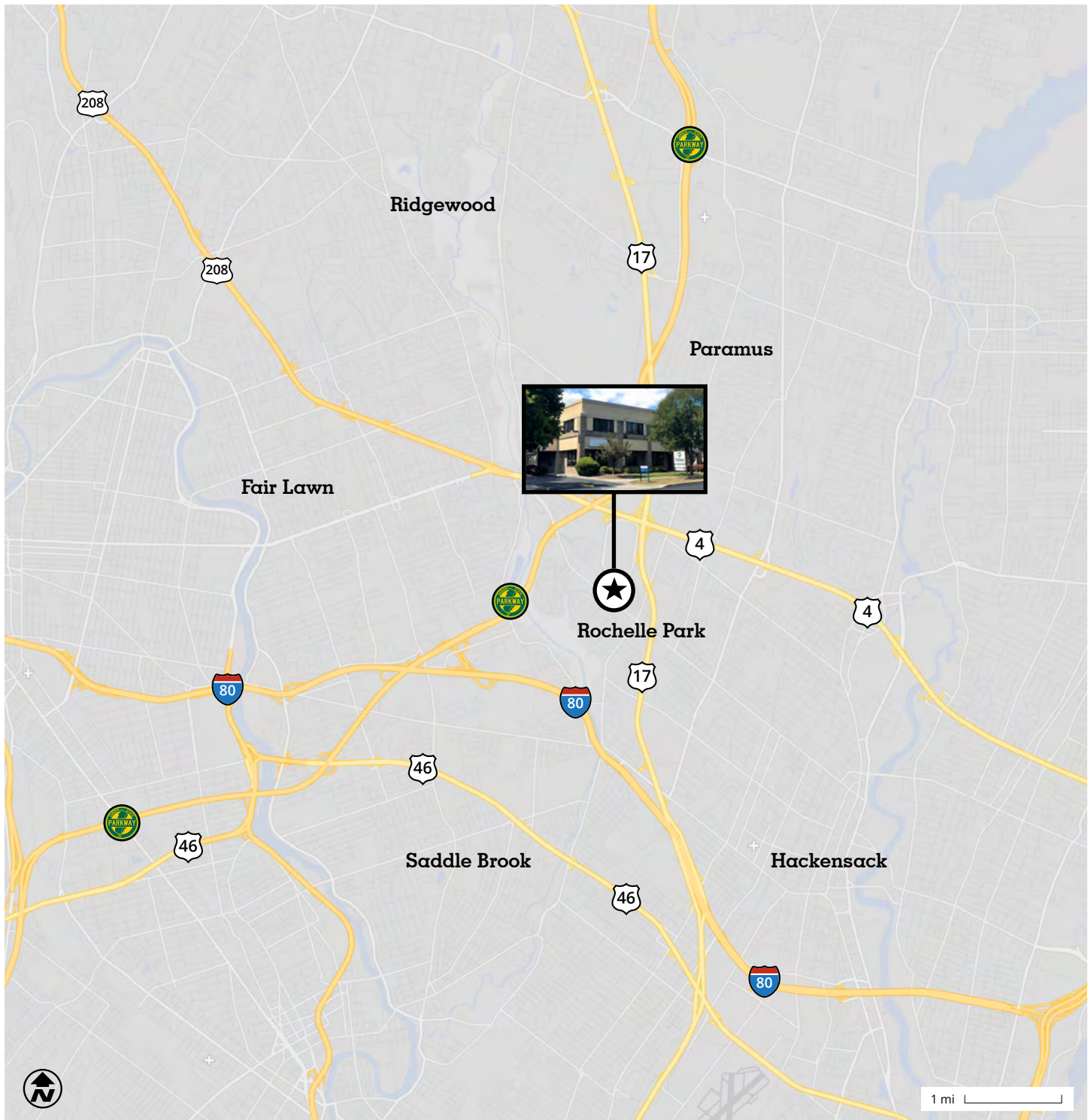
John C. (J.C.) Giordano III
Principal
+1 973 753 1082
jc.giordano@avisonyoung.com

Steven Geltzeiler
Senior Vice President
+1 973 898 4013
steven.geltzeiler@avisonyoung.com

Floor Plan – Second Floor**For more information:**

John C. (J.C.) Giordano III
Principal
+1 973 753 1082
jc.giordano@avisonyoung.com

Steven Geltzeiler
Senior Vice President
+1 973 898 4013
steven.geltzeiler@avisonyoung.com



For more information:

John C. (J.C.) Giordano III
Principal
+1 973 753 1082
jc.giordano@avisonyoung.com

Steven Geltzeiler
Senior Vice President
+1 973 898 4013
steven.geltzeiler@avisonyoung.com