

Available Acres 0.28

Land For Lease

Available SF 12,000



**Address:** 621-633 E Manchester Ave, Los Angeles, CA 90001

**Cross Streets:** Manchester Ave/Avalon Blvd

Great Property For Vehicle or Material Storage  
Includes: 3,400 SF Commercial Building  
Located on Heavy Traffic Manchester Ave  
Two Driveway Entrances  
Less Than One Mile East of I 10 Fwy Ramps

<b>Lease Rate/Mo:</b>	\$6,000	<b>Available Acres:</b>	0.28 Ac	<b>Gas:</b>	No	<b>Specific Use:</b>	Retail
<b>Lease Rate/SF:</b>	\$0.50	<b>Available SF:</b>	12,000 SF	<b>Water:</b>	Yes	<b>Zoning:</b>	C2
<b>Lease Type:</b>	Gross	<b>Building SF:</b>	3,400 SF	<b>Sewer:</b>	Yes	<b>Rail Service:</b>	No
<b>Lease Terms:</b>	Acceptable to Owner	<b>Yard:</b>	Fenced / Paved	<b>Electric:</b>	Yes	<b>Market Area:</b>	Outlying Los Angeles
<b>Sale Price/SF:</b>	NFS			<b>Fiber:</b>	Yes	<b>APN:</b>	6029-032-006,6029-032-007
<b>Sale Price:</b>	NFS						

**Listing Company:** Dorin Realty Company  
**Agents:** [Mark Whitman 213-627-0007](mailto:mwhitman@dorinrealty.com)

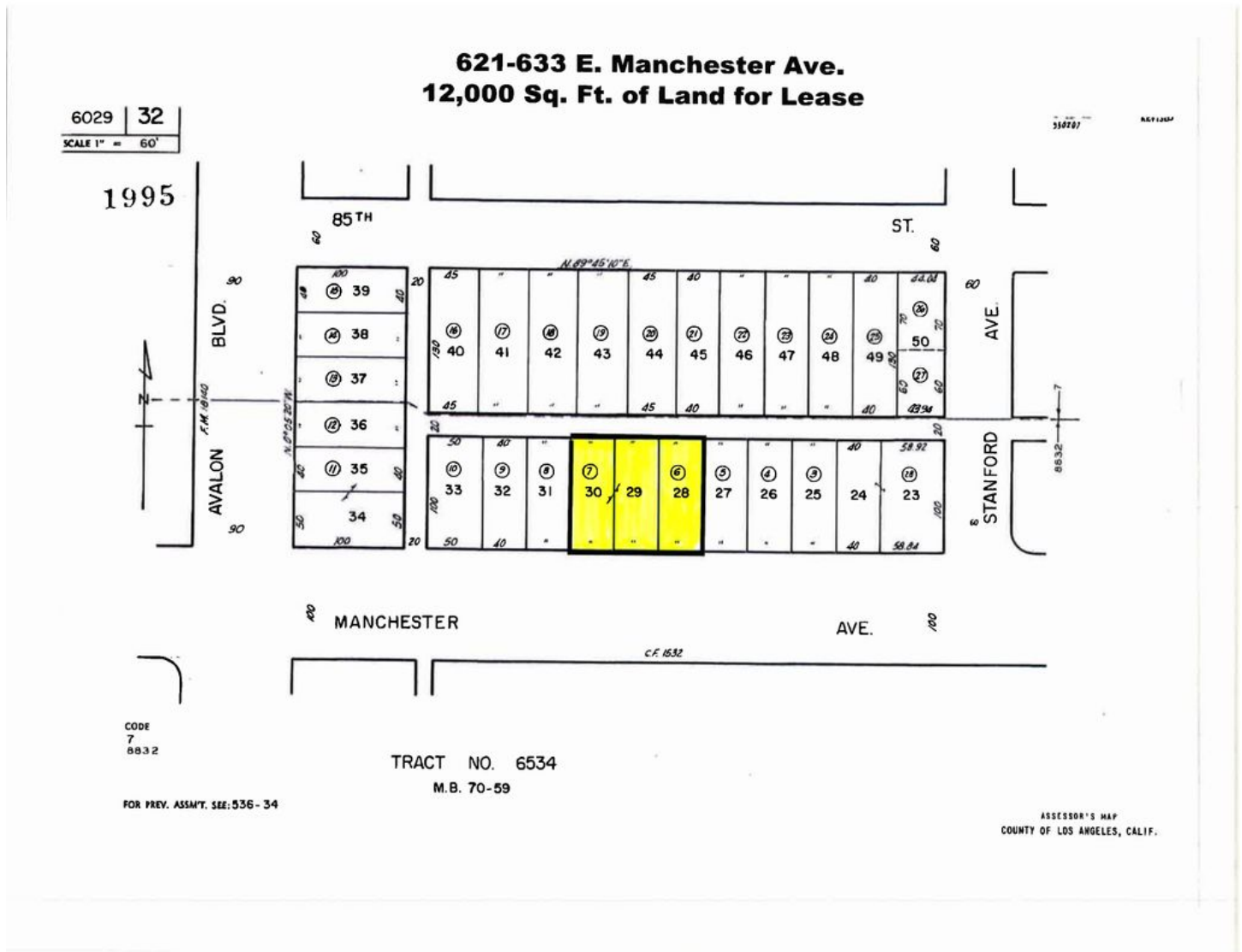
**Listing #:** 698bd1b1535e5d436e3407de  
**Notes:** All details must be verified. Immediate occupancy.

**Listing Date:** 02/10/2026

**FTCF:** CB250N000S000



**Mark Whitman**  
mwhitman@dorinrealty.com  
213-627-0007



**Mark Whitman**  
mwhitman@dorinrealty.com  
213-627-0007