

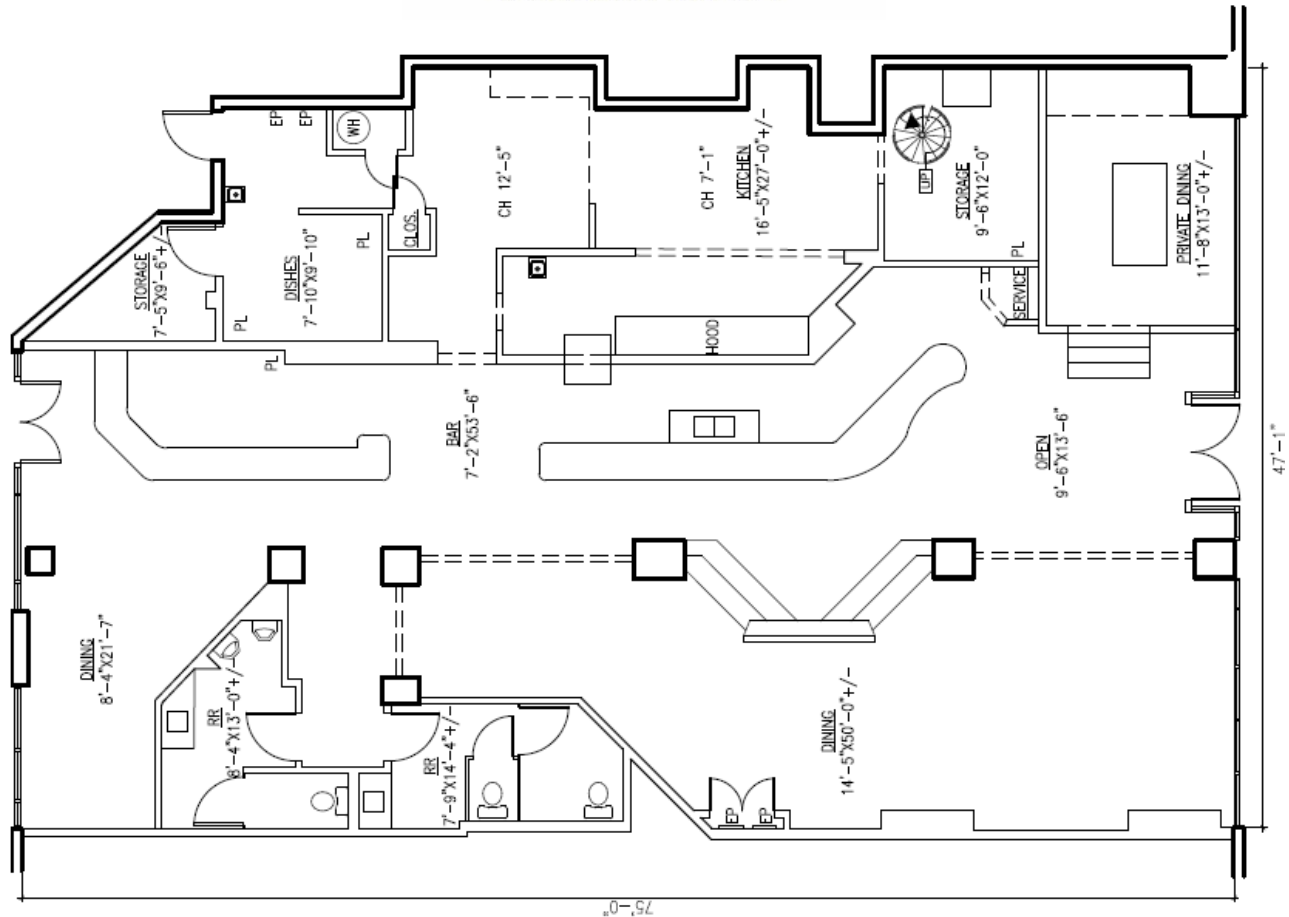
PICKWICK PLACE

1025 20th Street South, Birmingham, AL 35205



Property Details

- Size: 3,500 SF
- Rate: \$20.02/SF NNN
- Lease Term: 3–5 Years
- Available by January 2025
- Open floor-plan with 12+ foot ceilings
- Large dining room with high ceilings, patio space for outdoor seating, full kitchen, excellent street frontage
- Full kitchen with hood vent, grease trap, gas/plumbing hookups



Surrounding Area

- Located in the heart of Five Points South
- Connected to public parking deck
- Same block as a 17-story student housing apartment and two high-end hotels
- 20+ restaurants/bars within one block

