

FOR LEASE —Office Space Near El Paso Airport



1605 Beech, El Paso, TX 79925

PROPERTY DESCRIPTION

- Office Space near El Paso International Airport
- Visible from Montana
- Plenty of parking
- Near El Paso's highest traffic intersection

LEASE INFORMATION

- Suite B (1st floor) - 1,350 SF
- NNN Lease Structure
- CONTACT AGENT FOR RENT
- Tenant to control utilities & janitorial

For more information please contact:

Becca McBroom

915-613-5376 Direct

Mcbroom.Becca@gmail.com

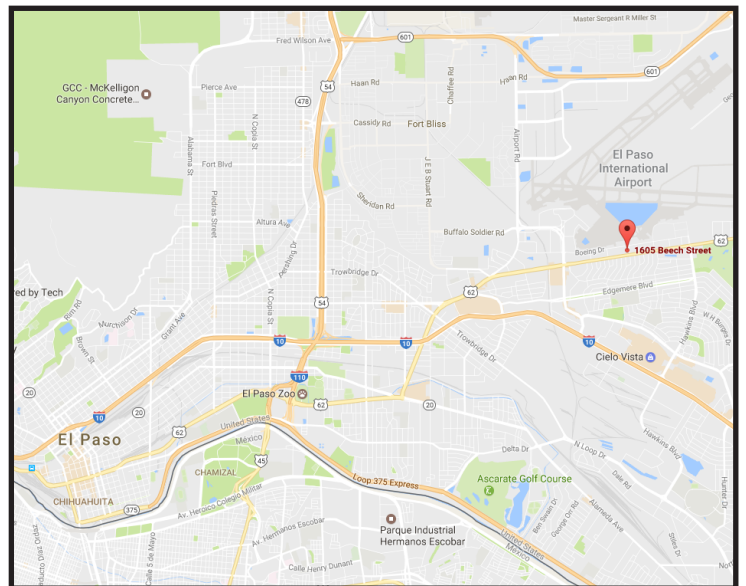
JMT PROPERTIES, INC

The information contained herein has been obtained from sources deemed reliable; however, no guaranty or warranty can be made as to its accuracy, completeness or adequacy of this information. All offerings are subject to prior sale, lease or withdrawal from the market without notice.

1605 BEECH, EL PASO, TX 79925



AREA ATTRACTIONS



For more information please contact:

Becca McBroom

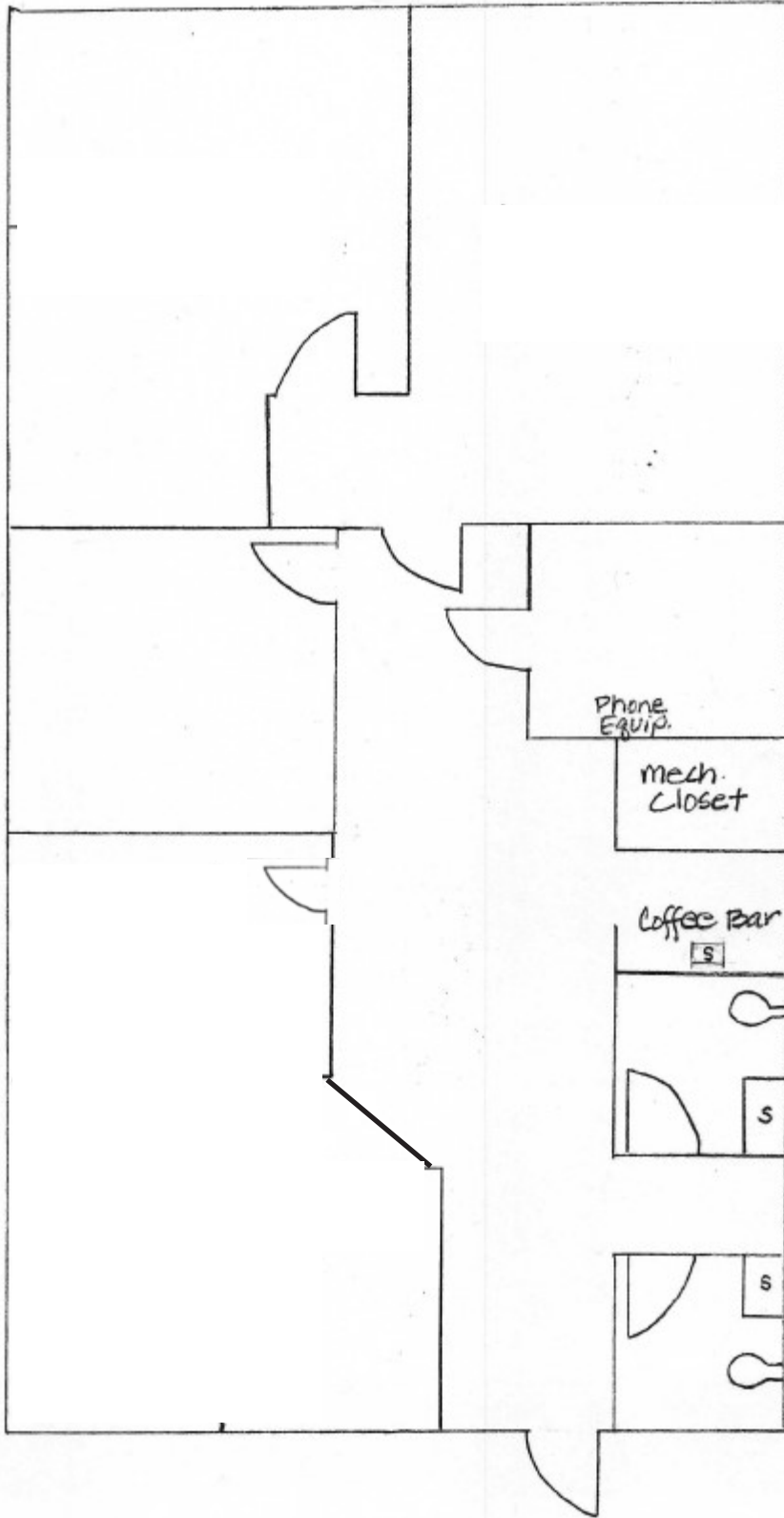
915-613-5376 Direct

McBroom.Becca@gmail.com

JMT PROPERTIES, INC

The information contained herein has been obtained from sources deemed reliable; however, no guaranty or warranty can be made as to its accuracy, completeness or adequacy of this information. All offerings are subject to prior sale, lease or withdrawal from the market without notice.

FLOOR PLAN SUITE B—GROUND FLOOR



APPROXIMATELY 1,350 SF

For more information please contact:

Becca McBroom

915-613-5376 Direct

McBroom.Becca@gmail.com

JMT PROPERTIES, INC

PHOTOS SUITE B—GROUND FLOOR



APPROXIMATELY 1,350 SF

JMT PROPERTIES, INC

For more information please contact:

Becca McBroom

915-613-5376 Direct

McBroom.Becca@gmail.com

