

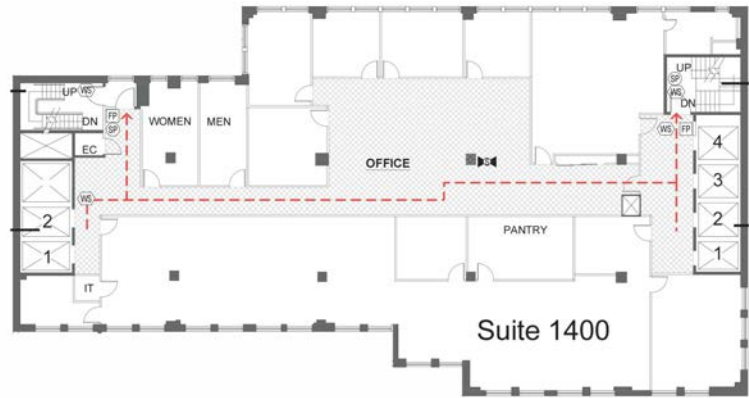
It's Chelsea, Terrific!

150 West 30th Street (between 6th and 7th Avenues)

Suite 1400

BERNSTEIN

REAL ESTATE



Facts

- 5,100 rentable sq ft open plan
- Bright front-facing corner unit
- 1 office, 2 conference rooms
- Mint condition kitchen
- Welcoming reception desk
- Mix of carpet and concrete floors

Grow your business here

Terms

- Possession: Immediate
- Rent: Negotiable
- Landlord will modify/upgrade
- Electric submetered
- Tenant controlled air cooled a/c

About the Property

Upgraded Lobby and Elevators
24 hour/7day Lobby Attendant
Full Staff
6 elevators (4 passenger, 2 freight)
Great Tenant Roster
Just off Seventh Avenue, steps from Penn Station, close to Herald Square Subways and Path



David Berger

call to show

Phone: 646-454-2906

Email: dberger@bernsteinre.com

All information is furnished from sources deemed reliable, but no representation is made as to the accuracy thereof, and same is submitted subject to errors, omissions, change of price, rental, or other conditions, prior sale, lease or financing and/or withdrawal without notice. This listing does not constitute an employment. All areas and dimensions are approximate.