

619 E BLITHEDALE AVENUE, MILL VALLEY

MEDICAL/PROFESSIONAL OFFICE SPACE FOR LEASE



Brian Foster
+1 415 451 2437
brian.foster@cushwake.com
Lic #: 01393059

Drew Soltis
+1 415 451 2415
drew.soltis@cushwake.com
Lic #: 02163430

PROPERTY OVERVIEW

619 E Blithedale offers a prime corner location at one of the busiest signalized intersections in Marin County. The building boasts outstanding visibility and signage potential along E. Blithedale and Camino Alto with 24/7 access and monument signage opportunities. This is a great location for medical/office tenants, and is a 3 minute drive from Highway 101. Tenant improvements negotiable.

Available Space: ±3,000 SF

Asking Rent: \$3.50 PSF NNN

Term: Negotiable

Parking: Covered On Site

Zoning: CG (General Commercial)

- Exposed trusses
- Prominent visibility & signage
- 2 large private offices and 5 treatment rooms
- Reception and waiting area
- Kitchen
- Sunny offices and treatment rooms with extensive window line
- Large open work space/fitness studio with separate exit
- New roof and HVAC



Highlights



Great natural light



Main & main of Mill Valley



Large, covered on-site parking garage

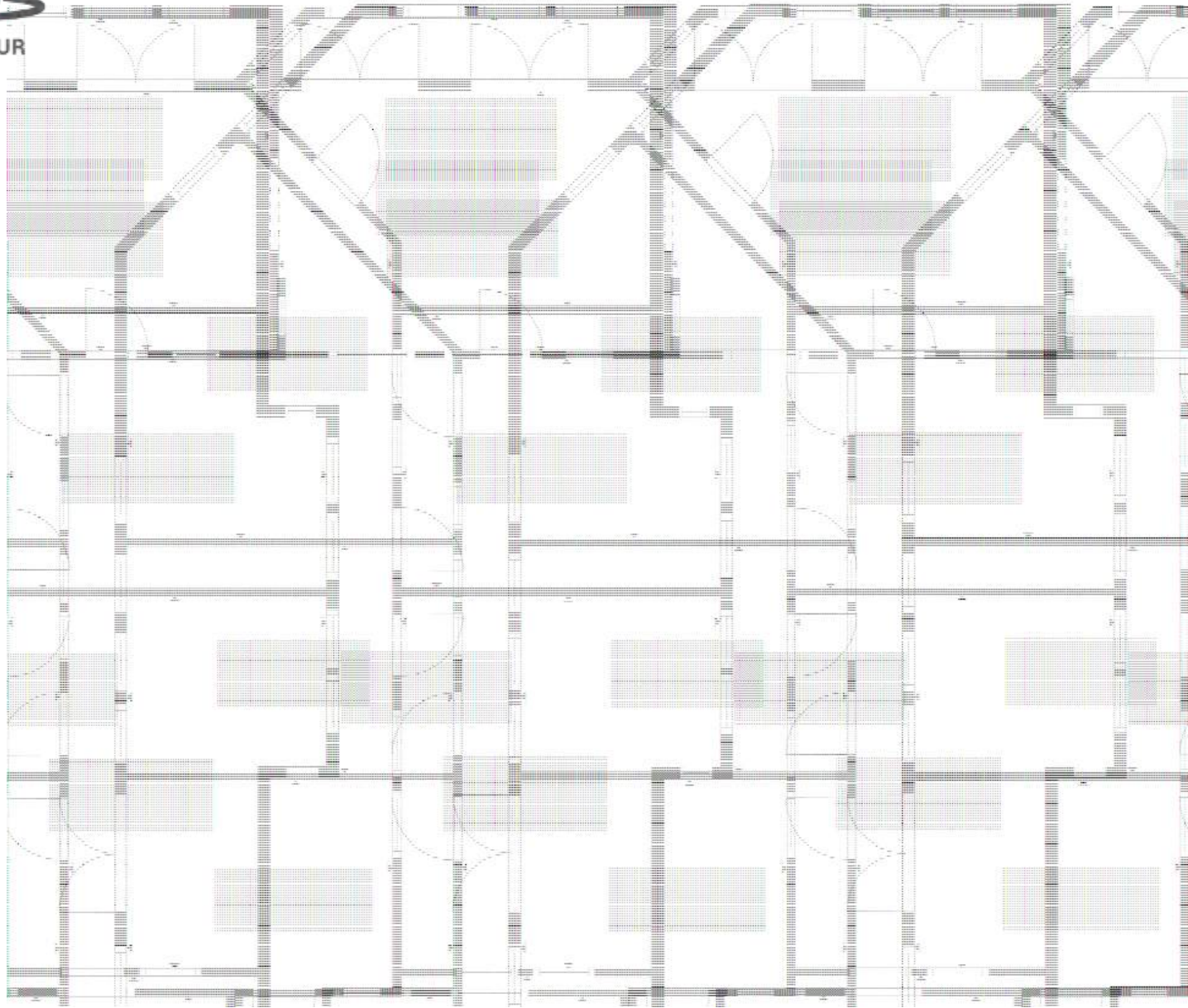


3 minute drive to HWY 101



Located at one of Marin's busiest intersections

Floor Plan

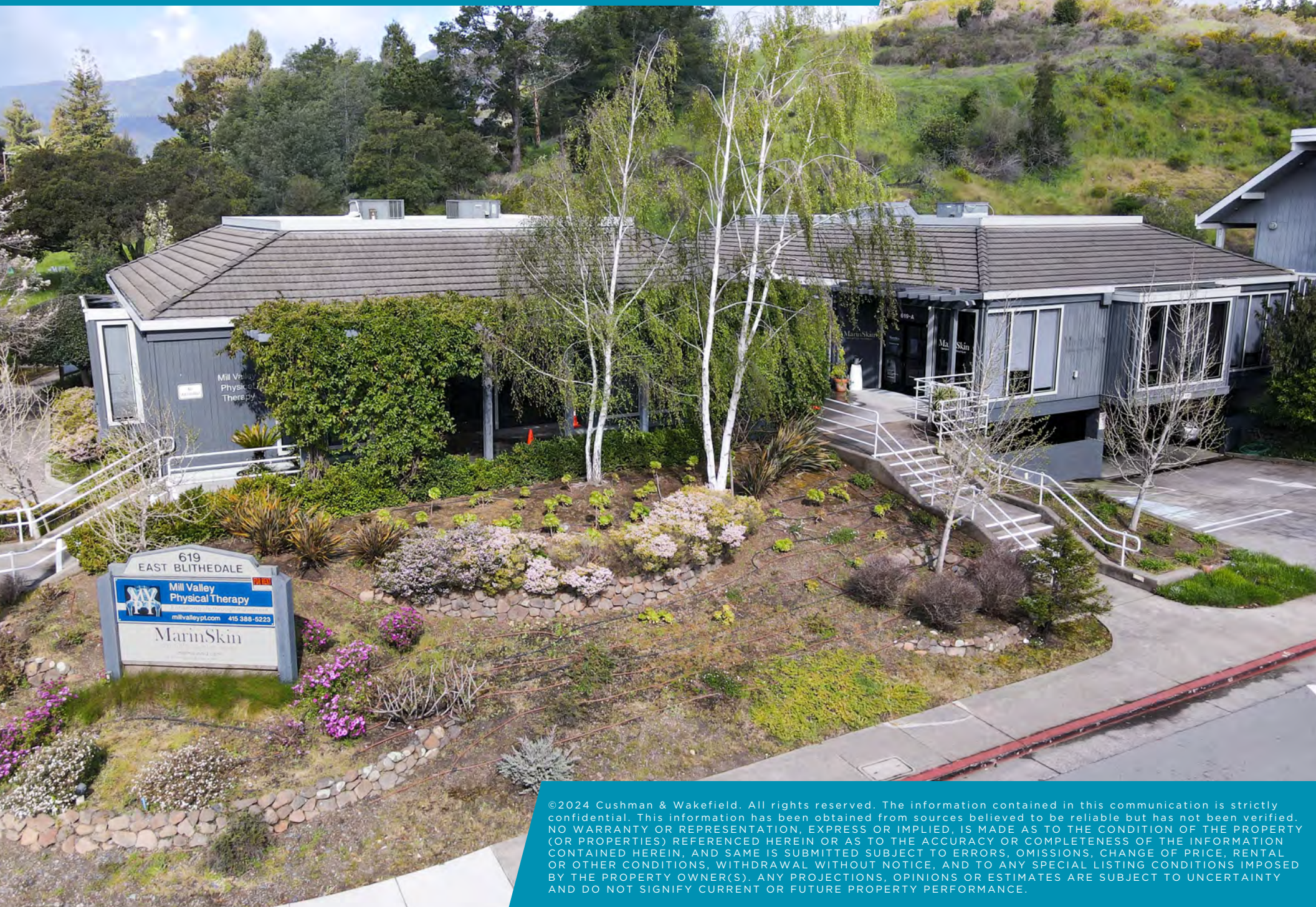


Property Photos



619 E BLITHEDALE AVENUE, MILL VALLEY

MEDICAL/PROFESSIONAL OFFICE SPACE FOR LEASE



©2024 Cushman & Wakefield. All rights reserved. The information contained in this communication is strictly confidential. This information has been obtained from sources believed to be reliable but has not been verified. NO WARRANTY OR REPRESENTATION, EXPRESS OR IMPLIED, IS MADE AS TO THE CONDITION OF THE PROPERTY (OR PROPERTIES) REFERENCED HEREIN OR AS TO THE ACCURACY OR COMPLETENESS OF THE INFORMATION CONTAINED HEREIN, AND SAME IS SUBMITTED SUBJECT TO ERRORS, OMISSIONS, CHANGE OF PRICE, RENTAL OR OTHER CONDITIONS, WITHDRAWAL WITHOUT NOTICE, AND TO ANY SPECIAL LISTING CONDITIONS IMPOSED BY THE PROPERTY OWNER(S). ANY PROJECTIONS, OPINIONS OR ESTIMATES ARE SUBJECT TO UNCERTAINTY AND DO NOT SIGNIFY CURRENT OR FUTURE PROPERTY PERFORMANCE.