



MRG

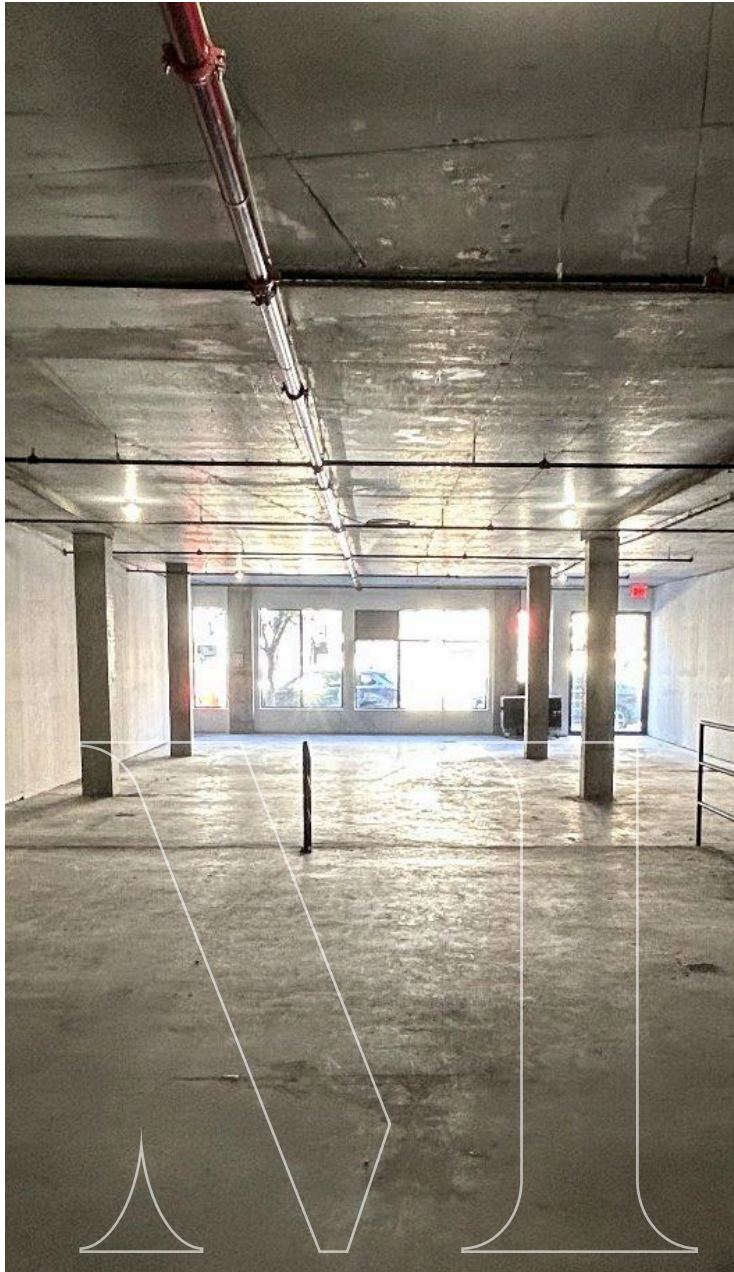
For Lease

48 Somers St

Retail Space For Lease

1,485 sq ft | 48 Somers St | Brooklyn, NY 11233

PROPERTY DETAILS



OVERVIEW

- **Address:** 48 Somers St, Brooklyn, NY 11233
- **Cross Streets:** Rockaway Ave and Mother Gaston Blvd
- **Neighborhood:** Bedford-Stuyvesant (Bed-Stuy)

SPACE DETAILS

- **Size:** 1,485 sq ft
- **Ceiling Height:** 12 ft
- **Frontage:** 20 ft

HIGHLIGHTS

- Brand New Development Designated Parking Glass Storefronts

TRANSPORTATION

- 🚆 1 min walk to train A
- 🚌 1 min walk to B60, 2 min walk to B25
- 🚗 17 min drive to LGA, 20 min drive to JFK, 41 min drive to EWR

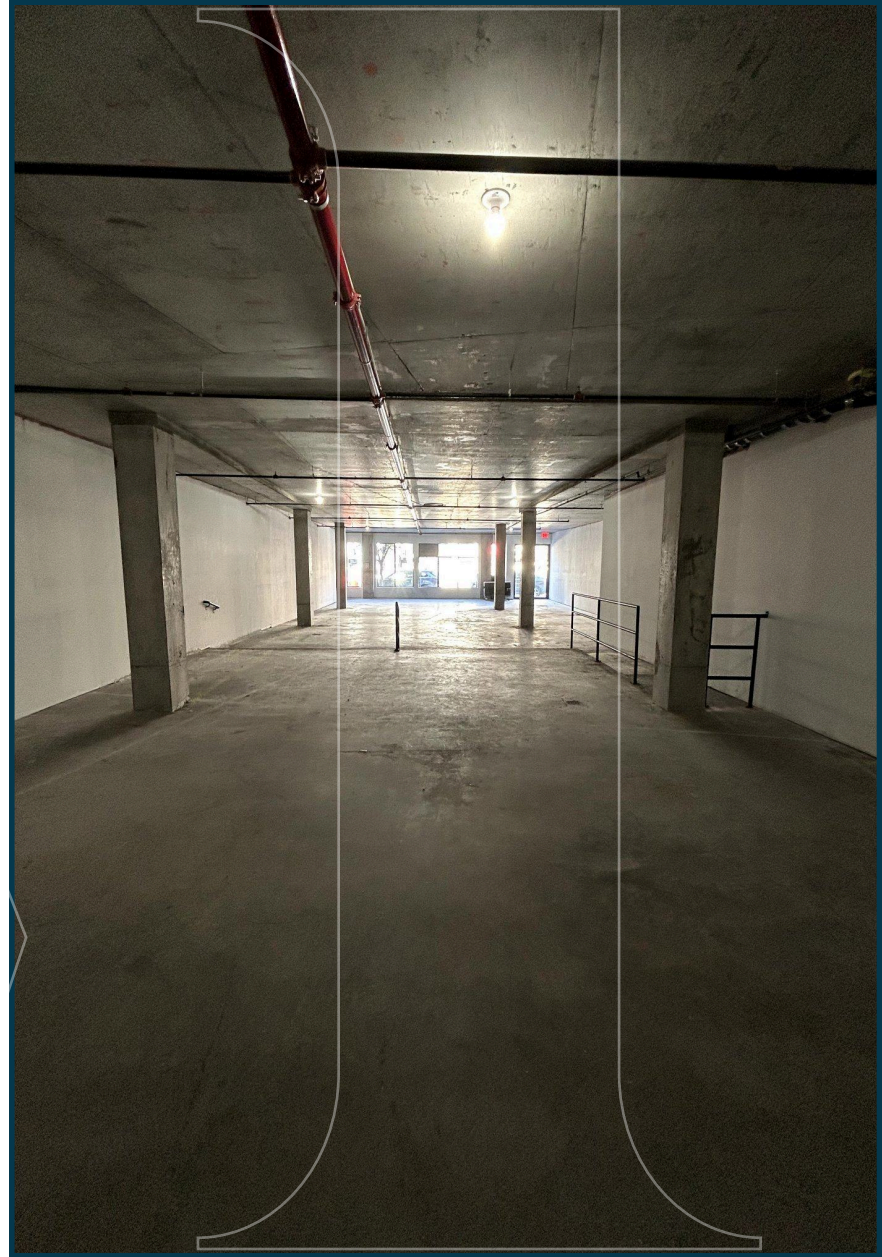
DEMOGRAPHICS

- **Population:** 79,796
- **Median Household Income:** \$107,700
- **Median Home Value:** \$1,031,134

NEIGHBORS

Fulton deli and grocery, caribbean jerkee's delight and restaurant, The green place restaurant, Beets Social Cafe, Simmer down reastautant, Wah sin Restaurant

INTERIOR PHOTOS



MRG

48 Somers St Brooklyn, NY 11233

FOR MORE INFORMATION
PLEASE CONTACT:

VICTOR SAFENIA

212-314-4684 Ext.107
Victors@mrgny.com

MOSHE AKIVA

212-314-4684 Ext.103
Moshe@mrgny.com



Retail Space For Lease